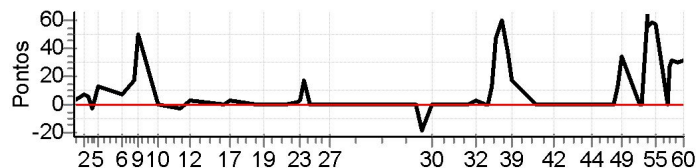


N u m	91	Equipe	91 / Bruno Leonel (calabresa)						
		Patrocinador							
		Cat / NL / Largada	NOVATOS / 51 / 09:25:00	Cidade	Feira				

PC	Tp	Trc	KmPC	Ideal	Passagem	Pen	Pontos	Col
1	Tmp	4	0.420	09:42:30	09:42:37	0	+4	3°
2	Tmp	5	3.520	09:46:35	09:46:45	0	+7	1°
3	Tmp	9	0.900	09:48:20	09:48:29	0	+6	1°
4	Tmp	11	1.950	09:50:06	09:50:02	0	-3	1°
5	Tmp	14	3.060	09:52:28	09:52:44	0	+13	1°
6	Tmp	18	1.990	10:02:26	10:02:36	0	+7	2°
8	Tmp	23	4.500	10:07:54	10:08:14	0	+17	2°
9	Tmp	23	4.900	10:09:00	10:09:53	0	+50	1°
10	Tmp	26	0.400	10:18:05	10:18:05	0	+0	1°
11	Tmp	28	5.500	10:26:33	10:26:29	0	-3	1°
12	Tmp	30	2.200	10:31:03	10:31:09	0	+3	1°
16	Tmp	36	0.340	10:45:05	10:45:04	0	-0	1°
17	Tmp	36	2.270	10:47:43	10:47:50	0	+4	1°
18	Tmp	39	0.310	10:58:22	10:58:26	0	+1	1°
19	Tmp	42	2.320	11:01:53	11:01:56	0	+0	1°
20	Tmp	46	2.340	11:10:03	11:10:04	0	+0	1°
21	Tmp	46	3.050	11:11:14	11:11:15	0	+0	1°
22	Tmp	47	5.930	11:15:11	11:15:16	0	+2	1°
23	Tmp	49	7.360	11:17:18	11:17:24	0	+3	1°
24	Tmp	51	8.250	11:19:14	11:19:35	0	+18	1°
25	Tmp	51	9.380	11:21:01	11:20:58	0	-0	1°
26	Tmp	54	6.500	11:29:08	11:29:09	0	+0	1°
27	Tmp	54	6.720	11:29:34	11:29:37	0	+0	1°

PC	Tp	Trc	KmPC	Ideal	Passagem	Pen	Pontos	Col
Num 91	A	1°	PG 25	B	3°	PG 20	Tot PG 45	Col. 2°



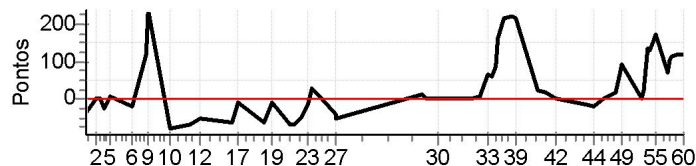
Moto Clube / Princesa Off Road / Zaitec

Etapa A	Num	91	Pen	0	PCZ	8	Total PP	141	PG	25
28	Tmp	58	2.230	12:06:01	12:05:59	0	-0	4°		
29	Tmp	59	2.880	12:07:58	12:07:49	0	-18	9°		
30	Tmp	60	5.550	12:12:46	12:12:47	0	+0	9°		
31	Tmp	64	2.520	12:27:30	12:27:31	0	+0	8°		
32	Tmp	65	4.770	12:30:48	12:30:55	0	+4	6°		
33	Tmp	67	6.830	12:34:45	12:34:42	0	-0	4°		
34	Tmp	69	7.380	12:36:14	12:36:14	0	+0	4°		
35	Tmp	69	7.920	12:37:52	12:38:08	0	+13	3°		
36	Tmp	69	8.290	12:38:58	12:39:48	0	+47	2°		
37	Tmp	69	9.150	12:41:33	12:42:36	0	+60	2°		
38	Tmp	71	1.200	12:44:19	12:45:00	0	+38	2°		
39	Tmp	71	2.230	12:46:08	12:46:29	0	+18	2°		
40	Tmp	76	5.100	12:55:52	12:55:55	0	+0	2°		
41	Tmp	76	7.200	12:58:44	12:58:48	0	+1	2°		
42	Tmp	77	3.910	13:03:42	13:03:45	0	+0	2°		
43	Tmp	80	0.310	13:16:29	13:16:32	0	+0	2°		
44	Tmp	81	3.010	13:19:46	13:19:47	0	+0	2°		
45	Tmp	84	5.450	13:23:45	13:23:49	0	+1	2°		
46	Tmp	85	8.060	13:27:12	13:27:09	0	-0	2°		
47	Tmp	87	1.100	13:28:38	13:28:40	0	+0	2°		
48	Tmp	87	2.250	13:30:47	13:31:04	0	+14	2°		
49	Tmp	88	2.760	13:31:45	13:32:23	0	+35	2°		
50	Tmp	92	1.520	13:39:50	13:39:48	0	-0	2°		
51	Tmp	93	1.980	13:40:49	13:40:51	0	+0	2°		
52	Tmp	94	2.730	13:42:42	13:43:51	0	+66	2°		
53	Tmp	95	3.140	13:43:19	13:44:18	0	+56	2°		
54	Tmp	95	3.830	13:44:54	13:45:56	0	+59	2°		
55	Tmp	97	4.650	13:46:17	13:47:17	0	+57	2°		
56	Tmp	100	0.650	13:51:16	13:51:15	0	-0	2°		
57	Tmp	101	1.030	13:51:56	13:52:26	0	+27	2°		
58	Tmp	101	1.800	13:52:56	13:53:31	0	+32	2°		
59	Tmp	101	3.670	13:55:23	13:55:56	0	+30	2°		
60	Tmp	102	6.100	13:58:06	13:58:41	0	+32	3°		
Etapa B	Num	91	Pen	0	PCZ	14	Total PP	608	PG	20

N u m	113	Equipe	113 / Gabriel Vila Nova (cobra)						
		Patrocinador							
		Cat / NL / Largada	NOVATOS / 58 / 09:28:30	Cidade	Alagoinhas				

PC	TP	TRC	KmPC	Ideal	Passagem	Pen	Pontos	Col
1	Tmp	4	0.420	09:46:00	09:45:44	0	-39	12°
2	Tmp	5	3.520	09:50:05	09:50:03	0	-0	11°
3	Tmp	9	0.900	09:51:50	09:51:55	0	+2	5°
4	Tmp	11	1.950	09:53:36	09:53:24	0	-27	7°
5	Tmp	14	3.060	09:55:58	09:56:08	0	+7	5°
6	Tmp	18	1.990	10:05:56	10:05:46	0	-21	6°
8	Tmp	23	4.500	10:11:24	10:13:27	0	+120	7°
9	Tmp	23	4.900	10:12:30	10:16:32	0	+239	8°
10	Tmp	26	0.400	10:21:35	10:21:05	0	-81	9°
11	Tmp	28	5.500	10:30:03	10:29:36	0	-72	10°
12	Tmp	30	2.200	10:34:33	10:34:12	0	-54	10°
16	Tmp	36	0.340	10:48:35	10:48:11	0	-63	10°
17	Tmp	36	2.270	10:51:13	10:51:06	0	-12	10°
18	Tmp	39	0.310	11:01:52	11:01:27	0	-66	10°
19	Tmp	42	2.320	11:05:23	11:05:17	0	-9	10°
20	Tmp	46	2.340	11:13:33	11:13:07	0	-69	10°
21	Tmp	46	3.050	11:14:44	11:14:17	0	-72	11°
22	Tmp	47	5.930	11:18:41	11:18:21	0	-51	11°
23	Tmp	49	7.360	11:20:48	11:20:40	0	-15	11°
24	Tmp	51	8.250	11:22:44	11:23:17	0	+30	11°
25	Tmp	51	9.380	11:24:31	11:24:49	0	+15	11°
26	Tmp	54	6.500	11:32:38	11:32:20	0	-45	11°
27	Tmp	54	6.720	11:33:04	11:32:43	0	-54	11°

PC	TP	TRC	KmPC	Ideal	Passagem	Pen	Pontos	Col					
Num	113	A	11°	PG	10	B	11°	PG	10	Tot PG	20	Col.	10°



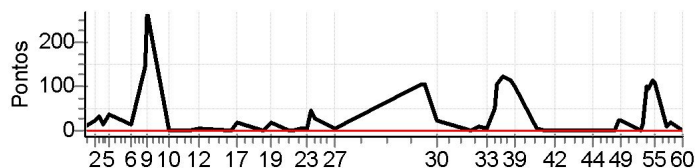
Moto Clube / Princesa Off Road / Zaitec

Etapa A	Num	113	Pen	0	PCZ	1	Total PP	1163	PG	10
28	Tmp	58	2.230	12:09:31	12:09:46	0	+12	9°		
29	Tmp	59	2.880	12:11:28	12:11:33	0	+2	7°		
30	Tmp	60	5.550	12:16:16	12:16:18	0	+0	7°		
31	Tmp	64	2.520	12:31:00	12:31:02	0	+0	7°		
32	Tmp	65	4.770	12:34:18	12:34:29	0	+8	7°		
33	Tmp	67	6.830	12:38:15	12:39:24	0	+66	8°		
34	Tmp	69	7.380	12:39:44	12:40:49	0	+62	8°		
35	Tmp	69	7.920	12:41:22	12:42:53	0	+88	9°		
36	Tmp	69	8.290	12:42:28	12:45:15	0	+164	10°		
37	Tmp	69	9.150	12:45:03	12:48:41	0	+215	11°		
38	Tmp	71	1.200	12:47:49	12:51:33	0	+221	12°		
39	Tmp	71	2.230	12:49:38	12:53:16	0	+215	12°		
40	Tmp	76	5.100	12:59:22	12:59:49	0	+24	12°		
41	Tmp	76	7.200	13:02:14	13:02:36	0	+19	12°		
42	Tmp	77	3.910	13:07:12	13:07:12	0	+0	12°		
43	Tmp	80	0.310	13:19:59	13:19:50	0	-18	12°		
44	Tmp	81	3.010	13:23:16	13:23:05	0	-24	12°		
45	Tmp	84	5.450	13:27:15	13:27:14	0	-0	12°		
46	Tmp	85	8.060	13:30:42	13:30:58	0	+13	12°		
47	Tmp	87	1.100	13:32:08	13:32:29	0	+18	12°		
48	Tmp	87	2.250	13:34:17	13:35:27	0	+67	12°		
49	Tmp	88	2.760	13:35:15	13:36:49	0	+91	12°		
50	Tmp	92	1.520	13:43:20	13:43:18	0	-0	12°		
51	Tmp	93	1.980	13:44:19	13:44:42	0	+20	12°		
52	Tmp	94	2.730	13:46:12	13:48:29	0	+134	12°		
53	Tmp	95	3.140	13:46:49	13:49:02	0	+130	12°		
54	Tmp	95	3.830	13:48:24	13:51:05	0	+158	12°		
55	Tmp	97	4.650	13:49:47	13:52:42	0	+172	11°		
56	Tmp	100	0.650	13:54:46	13:56:02	0	+73	11°		
57	Tmp	101	1.030	13:55:26	13:57:14	0	+105	11°		
58	Tmp	101	1.800	13:56:26	13:58:21	0	+112	11°		
59	Tmp	101	3.670	13:58:53	14:00:58	0	+122	11°		
60	Tmp	102	6.100	14:01:36	14:03:37	0	+118	11°		
Etapa B	Num	113	Pen	0	PCZ	5	Total PP	2471	PG	10

N u m	139	Equipe	139 / Rodrigo Vila Nova (cobra)						
		Patrocinador							
		Cat / NL / Largada	NOVATOS / 57 / 09:28:00	Cidade	Alagoinhas				

PC	Tp	Trc	KmPC	Ideal	Passagem	Pen	Pontos	Col
1	Tmp	4	0.420	09:45:30	09:45:43	0	+10	8°
2	Tmp	5	3.520	09:49:35	09:50:00	0	+22	7°
3	Tmp	9	0.900	09:51:20	09:51:54	0	+31	8°
4	Tmp	11	1.950	09:53:06	09:53:22	0	+13	8°
5	Tmp	14	3.060	09:55:28	09:56:07	0	+36	8°
6	Tmp	18	1.990	10:05:26	10:05:42	0	+13	8°
8	Tmp	23	4.500	10:10:54	10:13:23	0	+146	10°
9	Tmp	23	4.900	10:12:00	10:16:30	0	+267	10°
10	Tmp	26	0.400	10:21:05	10:21:04	0	-0	10°
11	Tmp	28	5.500	10:29:33	10:29:33	0	+0	9°
12	Tmp	30	2.200	10:34:03	10:34:10	0	+4	9°
16	Tmp	36	0.340	10:48:05	10:48:09	0	+1	9°
17	Tmp	36	2.270	10:50:43	10:51:03	0	+17	9°
18	Tmp	39	0.310	11:01:22	11:01:25	0	+0	9°
19	Tmp	42	2.320	11:04:53	11:05:13	0	+17	9°
20	Tmp	46	2.340	11:13:03	11:13:03	0	+0	9°
21	Tmp	46	3.050	11:14:14	11:14:14	0	+0	9°
22	Tmp	47	5.930	11:18:11	11:18:17	0	+3	9°
23	Tmp	49	7.360	11:20:18	11:20:25	0	+4	9°
24	Tmp	51	8.250	11:22:14	11:23:00	0	+43	9°
25	Tmp	51	9.380	11:24:01	11:24:31	0	+27	9°
26	Tmp	54	6.500	11:32:08	11:32:16	0	+5	9°
27	Tmp	54	6.720	11:32:34	11:32:40	0	+3	9°

PC	Tp	Trc	KmPC	Ideal	Passagem	Pen	Pontos	Col
Num 139	A	9°	PG 12	B	6°	PG 15	Tot PG 27	Col. 7°



Moto Clube / Princesa Off Road / Zaitec	
.	

Etapa A	Num	139	Pen	0	PCZ	5	Total PP	662	PG	12
----------------	-----	-----	-----	---	-----	---	----------	-----	----	----

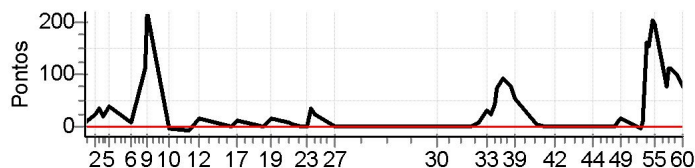
28	Tmp	58	2.230	12:09:01	12:10:46	0	+102	11°
29	Tmp	59	2.880	12:10:58	12:12:47	0	+106	11°
30	Tmp	60	5.550	12:15:46	12:16:13	0	+24	11°
31	Tmp	64	2.520	12:30:30	12:30:33	0	+0	11°
32	Tmp	65	4.770	12:33:48	12:34:01	0	+10	11°
33	Tmp	67	6.830	12:37:45	12:37:52	0	+4	11°
34	Tmp	69	7.380	12:39:14	12:39:43	0	+26	11°
35	Tmp	69	7.920	12:40:52	12:41:43	0	+48	11°
36	Tmp	69	8.290	12:41:58	12:43:47	0	+106	11°
37	Tmp	69	9.150	12:44:33	12:46:37	0	+121	9°
38	Tmp	71	1.200	12:47:19	12:49:15	0	+113	8°
39	Tmp	71	2.230	12:49:08	12:50:51	0	+100	7°
40	Tmp	76	5.100	12:58:52	12:58:59	0	+4	7°
41	Tmp	76	7.200	13:01:44	13:01:46	0	+0	7°
42	Tmp	77	3.910	13:06:42	13:06:45	0	+0	7°
43	Tmp	80	0.310	13:19:29	13:19:29	0	+0	7°
44	Tmp	81	3.010	13:22:46	13:22:49	0	+0	7°
45	Tmp	84	5.450	13:26:45	13:26:48	0	+0	7°
46	Tmp	85	8.060	13:30:12	13:30:13	0	+0	7°
47	Tmp	87	1.100	13:31:38	13:31:41	0	+0	7°
48	Tmp	87	2.250	13:33:47	13:34:11	0	+21	7°
49	Tmp	88	2.760	13:34:45	13:35:09	0	+21	7°
50	Tmp	92	1.520	13:42:50	13:42:54	0	+1	7°
51	Tmp	93	1.980	13:43:49	13:44:07	0	+15	7°
52	Tmp	94	2.730	13:45:42	13:47:26	0	+101	7°
53	Tmp	95	3.140	13:46:19	13:47:55	0	+93	8°
54	Tmp	95	3.830	13:47:54	13:49:51	0	+114	8°
55	Tmp	97	4.650	13:49:17	13:51:10	0	+110	7°
56	Tmp	100	0.650	13:54:16	13:54:26	0	+7	6°
57	Tmp	101	1.030	13:54:56	13:55:14	0	+15	6°
58	Tmp	101	1.800	13:55:56	13:56:15	0	+16	6°
59	Tmp	101	3.670	13:58:23	13:58:34	0	+8	6°
60	Tmp	102	6.100	14:01:06	14:01:09	0	+0	6°

Etapa B	Num	139	Pen	0	PCZ	9	Total PP	1286	PG	15
----------------	-----	-----	-----	---	-----	---	----------	------	----	----

N u m	191	Equipe	191 / Deraldo Araujo (ovo Gôro)						
		Patrocinador							
		Cat / NL / Largada	NOVATOS / 50 / 09:24:30	Cidade	Ssa				

PC	TP	TRC	KmPC	Ideal	Passagem	Pen	Pontos	Col
1	Tmp	4	0.420	09:42:00	09:42:13	0	+10	9°
2	Tmp	5	3.520	09:46:05	09:46:33	0	+25	10°
3	Tmp	9	0.900	09:47:50	09:48:27	0	+34	10°
4	Tmp	11	1.950	09:49:36	09:50:00	0	+21	10°
5	Tmp	14	3.060	09:51:58	09:52:41	0	+40	9°
6	Tmp	18	1.990	10:01:56	10:02:07	0	+8	9°
8	Tmp	23	4.500	10:07:24	10:09:18	0	+111	9°
9	Tmp	23	4.900	10:08:30	10:12:11	0	+218	9°
10	Tmp	26	0.400	10:17:35	10:17:31	0	-3	8°
11	Tmp	28	5.500	10:26:03	10:25:58	0	-6	8°
12	Tmp	30	2.200	10:30:33	10:30:54	0	+18	8°
16	Tmp	36	0.340	10:44:35	10:44:38	0	+0	8°
17	Tmp	36	2.270	10:47:13	10:47:30	0	+14	8°
18	Tmp	39	0.310	10:57:52	10:57:52	0	+0	8°
19	Tmp	42	2.320	11:01:23	11:01:41	0	+15	8°
20	Tmp	46	2.340	11:09:33	11:09:46	0	+10	8°
21	Tmp	46	3.050	11:10:44	11:10:52	0	+5	8°
22	Tmp	47	5.930	11:14:41	11:14:42	0	+0	8°
23	Tmp	49	7.360	11:16:48	11:16:51	0	+0	8°
24	Tmp	51	8.250	11:18:44	11:19:22	0	+35	8°
25	Tmp	51	9.380	11:20:31	11:20:57	0	+23	8°
26	Tmp	54	6.500	11:28:38	11:28:36	0	-0	8°
27	Tmp	54	6.720	11:29:04	11:29:01	0	-0	8°

PC	TP	TRC	KmPC	Ideal	Passagem	Pen	Pontos	Col					
Num	191	A	8°	PG	13	B	8°	PG	13	Tot PG	26	Col.	9°



Moto Clube / Princesa Off Road / Zaitec									
.									

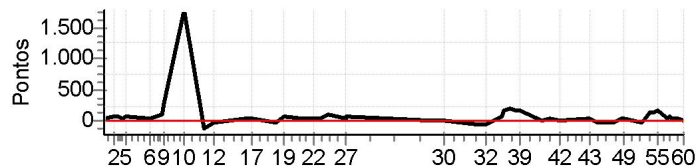
Etapa A	Num	191	Pen	0	PCZ	6	Total PP	596	PG	13
28	Tmp	58	2.230	12:05:31	12:05:31	0	+0	5°		
29	Tmp	59	2.880	12:07:28	12:07:28	0	+0	2°		
30	Tmp	60	5.550	12:12:16	12:12:19	0	+0	2°		
31	Tmp	64	2.520	12:27:00	12:27:04	0	+1	2°		
32	Tmp	65	4.770	12:30:18	12:30:30	0	+9	5°		
33	Tmp	67	6.830	12:34:15	12:34:50	0	+32	6°		
34	Tmp	69	7.380	12:35:44	12:36:13	0	+26	6°		
35	Tmp	69	7.920	12:37:22	12:38:08	0	+43	6°		
36	Tmp	69	8.290	12:38:28	12:39:46	0	+75	5°		
37	Tmp	69	9.150	12:41:03	12:42:40	0	+94	4°		
38	Tmp	71	1.200	12:43:49	12:45:11	0	+79	4°		
39	Tmp	71	2.230	12:45:38	12:46:35	0	+54	4°		
40	Tmp	76	5.100	12:55:22	12:55:30	0	+5	4°		
41	Tmp	76	7.200	12:58:14	12:58:12	0	-0	4°		
42	Tmp	77	3.910	13:03:12	13:03:11	0	-0	4°		
43	Tmp	80	0.310	13:15:59	13:16:00	0	+0	4°		
44	Tmp	81	3.010	13:19:16	13:19:15	0	-0	4°		
45	Tmp	84	5.450	13:23:15	13:23:16	0	+0	4°		
46	Tmp	85	8.060	13:26:42	13:26:40	0	-0	4°		
47	Tmp	87	1.100	13:28:08	13:28:07	0	-0	4°		
48	Tmp	87	2.250	13:30:17	13:30:32	0	+12	4°		
49	Tmp	88	2.760	13:31:15	13:31:35	0	+17	4°		
50	Tmp	92	1.520	13:39:20	13:39:16	0	-3	4°		
51	Tmp	93	1.980	13:40:19	13:40:32	0	+10	4°		
52	Tmp	94	2.730	13:42:12	13:44:57	0	+162	4°		
53	Tmp	95	3.140	13:42:49	13:45:25	0	+153	5°		
54	Tmp	95	3.830	13:44:24	13:47:48	0	+201	6°		
55	Tmp	97	4.650	13:45:47	13:49:06	0	+196	6°		
56	Tmp	100	0.650	13:50:46	13:52:07	0	+78	7°		
57	Tmp	101	1.030	13:51:26	13:53:19	0	+110	7°		
58	Tmp	101	1.800	13:52:26	13:54:21	0	+112	8°		
59	Tmp	101	3.670	13:54:53	13:56:36	0	+100	8°		
60	Tmp	102	6.100	13:57:36	13:58:55	0	+76	8°		

Etapa B	Num	191	Pen	0	PCZ	10	Total PP	1648	PG	13
---------	-----	-----	-----	---	-----	----	----------	------	----	----

N u m	202	Equipe	202 / Cristiano Carvaljo (doutor)						
		Patrocinador							
		Cat / NL / Largada	NOVATOS / 54 / 09:26:30	Cidade	Feira				

PC	Tp	Trc	KmPC	Ideal	Passagem	Pen	Pontos	Col
1	Tmp	4	0.420	09:44:00	09:44:38	0	+35	11°
2	Tmp	5	3.520	09:48:05	09:48:54	0	+46	12°
3	Tmp	9	0.900	09:49:50	09:50:40	0	+47	12°
4	Tmp	11	1.950	09:51:36	09:52:03	0	+24	12°
5	Tmp	14	3.060	09:53:58	09:54:47	0	+46	12°
6	Tmp	18	1.990	10:03:56	10:04:39	0	+40	12°
8	Tmp	23	4.500	10:09:24	10:10:53	0	+86	11°
9	Tmp	23	4.900	10:10:30	10:15:31	0	+298	11°
10	Tmp	26	0.400	10:19:35		0	+1800	12°
11	Tmp	28	5.500	10:28:03	10:27:15	0	-135	12°
12	Tmp	30	2.200	10:32:33	10:32:14	0	-48	12°
16	Tmp	36	0.340	10:46:35	10:47:07	0	+29	12°
17	Tmp	36	2.270	10:49:13	10:49:58	0	+42	12°
18	Tmp	39	0.310	10:59:52	10:59:38	0	-33	12°
19	Tmp	42	2.320	11:03:23	11:04:40	0	+74	12°
20	Tmp	46	2.340	11:11:33	11:12:05	0	+29	12°
21	Tmp	46	3.050	11:12:44	11:13:16	0	+29	12°
22	Tmp	47	5.930	11:16:41	11:17:13	0	+29	12°
23	Tmp	49	7.360	11:18:48	11:19:21	0	+30	12°
24	Tmp	51	8.250	11:20:44	11:22:00	0	+73	12°
25	Tmp	51	9.380	11:22:31	11:24:19	0	+105	12°
26	Tmp	54	6.500	11:30:38	11:31:12	0	+31	12°
27	Tmp	54	6.720	11:31:04	11:32:04	0	+57	12°

PC	Tp	Trc	KmPC	Ideal	Passagem	Pen	Pontos	Col					
Num	202	A	12°	PG	9	B	10°	PG	11	Tot PG	20	Col.	12°



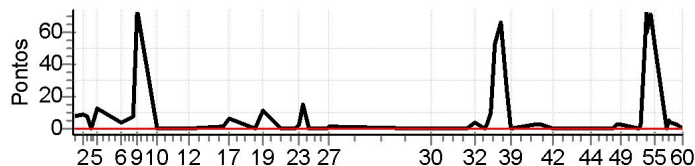
Moto Clube / Princesa Off Road / Zaitec	
.	

Etapa A	Num	202	Pen	0	PCZ	0	Total PP	3166	PG	9
28	Tmp	58	2.230	12:07:31	12:07:25	0	-9	8°		
29	Tmp	59	2.880	12:09:28	12:09:38	0	+7	8°		
30	Tmp	60	5.550	12:14:16	12:14:19	0	+0	8°		
31	Tmp	64	2.520	12:29:00	12:28:38	0	-57	9°		
32	Tmp	65	4.770	12:32:18	12:31:57	0	-54	9°		
33	Tmp	67	6.830	12:36:15	12:36:28	0	+10	9°		
34	Tmp	69	7.380	12:37:44	12:38:13	0	+26	9°		
35	Tmp	69	7.920	12:39:22	12:40:12	0	+47	8°		
36	Tmp	69	8.290	12:40:28	12:42:55	0	+144	8°		
37	Tmp	69	9.150	12:43:03	12:46:29	0	+203	10°		
38	Tmp	71	1.200	12:45:49	12:48:48	0	+176	10°		
39	Tmp	71	2.230	12:47:38	12:50:21	0	+160	10°		
40	Tmp	76	5.100	12:57:22	12:57:33	0	+8	10°		
41	Tmp	76	7.200	13:00:14	13:00:31	0	+14	11°		
42	Tmp	77	3.910	13:05:12	13:05:07	0	-6	11°		
43	Tmp	80	0.310	13:17:59	13:18:23	0	+21	11°		
44	Tmp	81	3.010	13:21:16	13:21:01	0	-36	11°		
45	Tmp	84	5.450	13:25:15	13:25:02	0	-30	11°		
46	Tmp	85	8.060	13:28:42	13:28:24	0	-45	11°		
47	Tmp	87	1.100	13:30:08	13:30:03	0	-6	11°		
48	Tmp	87	2.250	13:32:17	13:32:44	0	+24	11°		
49	Tmp	88	2.760	13:33:15	13:33:52	0	+34	11°		
50	Tmp	92	1.520	13:41:20	13:41:03	0	-42	11°		
51	Tmp	93	1.980	13:42:19	13:42:19	0	+0	11°		
52	Tmp	94	2.730	13:44:12	13:46:21	0	+126	11°		
53	Tmp	95	3.140	13:44:49	13:46:46	0	+114	11°		
54	Tmp	95	3.830	13:46:24	13:48:28	0	+121	11°		
55	Tmp	97	4.650	13:47:47	13:50:27	0	+157	10°		
56	Tmp	100	0.650	13:52:46	13:53:11	0	+22	10°		
57	Tmp	101	1.030	13:53:26	13:54:17	0	+48	10°		
58	Tmp	101	1.800	13:54:26	13:55:13	0	+44	10°		
59	Tmp	101	3.670	13:56:53	13:57:14	0	+18	10°		
60	Tmp	102	6.100	13:59:36	13:59:44	0	+5	10°		
Etapa B	Num	202	Pen	0	PCZ	2	Total PP	1814	PG	11

N u m	210	Equipe	210 / Fabricio Rocha (zoi)					
		Patrocinador						
		Cat / NL / Largada	NOVATOS / 52 / 09:25:30	Cidade	Ssa			

PC	Tp	Trc	KmPC	Ideal	Passagem	Pen	Pontos	Col
1	Tmp	4	0.420	09:43:00	09:43:10	0	+7	4°
2	Tmp	5	3.520	09:47:05	09:47:17	0	+9	2°
3	Tmp	9	0.900	09:48:50	09:49:00	0	+7	2°
4	Tmp	11	1.950	09:50:36	09:50:36	0	+0	2°
5	Tmp	14	3.060	09:52:58	09:53:13	0	+12	2°
6	Tmp	18	1.990	10:02:56	10:03:03	0	+4	1°
8	Tmp	23	4.500	10:08:24	10:08:34	0	+7	1°
9	Tmp	23	4.900	10:09:30	10:10:47	0	+74	2°
10	Tmp	26	0.400	10:18:35	10:18:36	0	+0	2°
11	Tmp	28	5.500	10:27:03	10:27:04	0	+0	2°
12	Tmp	30	2.200	10:31:33	10:31:35	0	+0	2°
16	Tmp	36	0.340	10:45:35	10:45:39	0	+1	2°
17	Tmp	36	2.270	10:48:13	10:48:22	0	+6	2°
18	Tmp	39	0.310	10:58:52	10:58:54	0	+0	2°
19	Tmp	42	2.320	11:02:23	11:02:37	0	+11	2°
20	Tmp	46	2.340	11:10:33	11:10:36	0	+0	2°
21	Tmp	46	3.050	11:11:44	11:11:47	0	+0	2°
22	Tmp	47	5.930	11:15:41	11:15:44	0	+0	2°
23	Tmp	49	7.360	11:17:48	11:17:53	0	+2	2°
24	Tmp	51	8.250	11:19:44	11:20:02	0	+15	2°
25	Tmp	51	9.380	11:21:31	11:21:34	0	+0	2°
26	Tmp	54	6.500	11:29:38	11:29:39	0	+0	2°
27	Tmp	54	6.720	11:30:04	11:30:08	0	+1	2°

PC	Tp	Trc	KmPC	Ideal	Passagem	Pen	Pontos	Col					
Num	210	A	2°	PG	22	B	1°	PG	25	Tot PG	47	Col.	1°



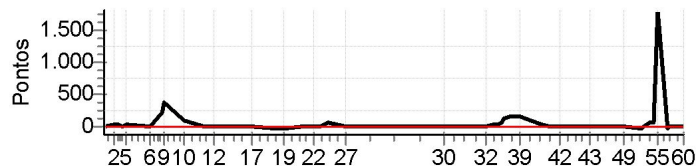
Moto Clube / Princesa Off Road / Zaitec

Etapa A	Num	210	Pen	0	PCZ	10	Total PP	156	PG	22
28	Tmp	58	2.230	12:06:31	12:06:29	0	-0	3°		
29	Tmp	59	2.880	12:08:28	12:08:29	0	+0	1°		
30	Tmp	60	5.550	12:13:16	12:13:19	0	+0	1°		
31	Tmp	64	2.520	12:28:00	12:28:03	0	+0	1°		
32	Tmp	65	4.770	12:31:18	12:31:25	0	+4	1°		
33	Tmp	67	6.830	12:35:15	12:35:17	0	+0	1°		
34	Tmp	69	7.380	12:36:44	12:36:49	0	+2	1°		
35	Tmp	69	7.920	12:38:22	12:38:35	0	+10	1°		
36	Tmp	69	8.290	12:39:28	12:40:24	0	+53	1°		
37	Tmp	69	9.150	12:42:03	12:43:13	0	+67	1°		
38	Tmp	71	1.200	12:44:49	12:45:16	0	+24	1°		
39	Tmp	71	2.230	12:46:38	12:46:40	0	+0	1°		
40	Tmp	76	5.100	12:56:22	12:56:27	0	+2	1°		
41	Tmp	76	7.200	12:59:14	12:59:19	0	+2	1°		
42	Tmp	77	3.910	13:04:12	13:04:14	0	+0	1°		
43	Tmp	80	0.310	13:16:59	13:17:01	0	+0	1°		
44	Tmp	81	3.010	13:20:16	13:20:19	0	+0	1°		
45	Tmp	84	5.450	13:24:15	13:24:18	0	+0	1°		
46	Tmp	85	8.060	13:27:42	13:27:42	0	+0	1°		
47	Tmp	87	1.100	13:29:08	13:29:11	0	+0	1°		
48	Tmp	87	2.250	13:31:17	13:31:23	0	+3	1°		
49	Tmp	88	2.760	13:32:15	13:32:20	0	+2	1°		
50	Tmp	92	1.520	13:40:20	13:40:20	0	+0	1°		
51	Tmp	93	1.980	13:41:19	13:41:25	0	+3	1°		
52	Tmp	94	2.730	13:43:12	13:44:29	0	+74	1°		
53	Tmp	95	3.140	13:43:49	13:44:52	0	+60	1°		
54	Tmp	95	3.830	13:45:24	13:46:38	0	+71	1°		
55	Tmp	97	4.650	13:46:47	13:47:43	0	+53	1°		
56	Tmp	100	0.650	13:51:46	13:51:48	0	+0	1°		
57	Tmp	101	1.030	13:52:26	13:52:34	0	+5	1°		
58	Tmp	101	1.800	13:53:26	13:53:33	0	+4	1°		
59	Tmp	101	3.670	13:55:53	13:55:59	0	+3	1°		
60	Tmp	102	6.100	13:58:36	13:58:38	0	+0	1°		
Etapa B	Num	210	Pen	0	PCZ	15	Total PP	442	PG	25

N u m	219	Equipe	219 / Aleksandro Santos (jacaré)						
		Patrocinador							
		Cat / NL / Largada	NOVATOS / 56 / 09:27:30	Cidade	Feira				

PC	Tp	Trc	KmPC	Ideal	Passagem	Pen	Pontos	Col
1	Tmp	4	0.420	09:45:00	09:45:11	0	+8	6°
2	Tmp	5	3.520	09:49:05	09:49:32	0	+24	8°
3	Tmp	9	0.900	09:50:50	09:51:27	0	+34	9°
4	Tmp	11	1.950	09:52:36	09:52:57	0	+18	9°
5	Tmp	14	3.060	09:54:58	09:55:50	0	+49	10°
6	Tmp	18	1.990	10:04:56	10:05:09	0	+10	10°
8	Tmp	23	4.500	10:10:24	10:14:12	0	+225	12°
9	Tmp	23	4.900	10:11:30	10:17:47	0	+374	12°
10	Tmp	26	0.400	10:20:35	10:22:24	0	+106	11°
11	Tmp	28	5.500	10:29:03	10:28:58	0	-6	11°
12	Tmp	30	2.200	10:33:33	10:33:54	0	+18	11°
16	Tmp	36	0.340	10:47:35	10:47:32	0	-0	11°
17	Tmp	36	2.270	10:50:13	10:50:17	0	+1	11°
18	Tmp	39	0.310	11:00:52	11:00:44	0	-15	11°
19	Tmp	42	2.320	11:04:23	11:04:15	0	-15	11°
20	Tmp	46	2.340	11:12:33	11:12:29	0	-3	11°
21	Tmp	46	3.050	11:13:44	11:13:42	0	-0	10°
22	Tmp	47	5.930	11:17:41	11:17:38	0	-0	10°
23	Tmp	49	7.360	11:19:48	11:19:48	0	+0	10°
24	Tmp	51	8.250	11:21:44	11:22:12	0	+25	10°
25	Tmp	51	9.380	11:23:31	11:24:43	0	+69	10°
26	Tmp	54	6.500	11:31:38	11:31:35	0	-0	10°
27	Tmp	54	6.720	11:32:04	11:32:00	0	-3	10°

PC	Tp	Trc	KmPC	Ideal	Passagem	Pen	Pontos	Col					
Num	219	A	10°	PG	11	B	12°	PG	9	Tot PG	20	Col.	11°



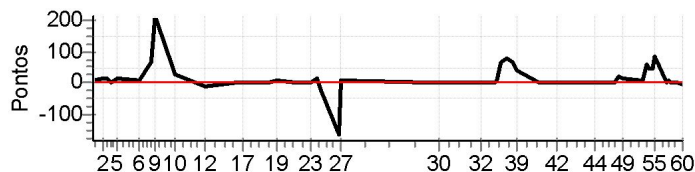
Moto Clube / Princesa Off Road / Zaitec	
.	

Etapa A	Num	219	Pen	0	PCZ	5	Total PP	1003	PG	11
28	Tmp	58	2.230	12:08:31	12:08:26	0	-6	7°		
29	Tmp	59	2.880	12:10:28	12:10:31	0	+0	3°		
30	Tmp	60	5.550	12:15:16	12:15:13	0	-0	3°		
31	Tmp	64	2.520	12:30:00	12:30:09	0	+6	6°		
32	Tmp	65	4.770	12:33:18	12:33:32	0	+11	8°		
33	Tmp	67	6.830	12:37:15	12:37:51	0	+33	7°		
34	Tmp	69	7.380	12:38:44	12:39:28	0	+41	7°		
35	Tmp	69	7.920	12:40:22	12:41:37	0	+72	7°		
36	Tmp	69	8.290	12:41:28	12:43:54	0	+143	7°		
37	Tmp	69	9.150	12:44:03	12:46:55	0	+169	6°		
38	Tmp	71	1.200	12:46:49	12:49:42	0	+170	7°		
39	Tmp	71	2.230	12:48:38	12:51:10	0	+149	8°		
40	Tmp	76	5.100	12:58:22	12:58:48	0	+23	8°		
41	Tmp	76	7.200	13:01:14	13:01:19	0	+2	8°		
42	Tmp	77	3.910	13:06:12	13:06:15	0	+0	8°		
43	Tmp	80	0.310	13:18:59	13:19:03	0	+1	8°		
44	Tmp	81	3.010	13:22:16	13:22:15	0	-0	8°		
45	Tmp	84	5.450	13:26:15	13:26:16	0	+0	8°		
46	Tmp	85	8.060	13:29:42	13:29:41	0	-0	8°		
47	Tmp	87	1.100	13:31:08	13:31:06	0	-0	8°		
48	Tmp	87	2.250	13:33:17	13:33:24	0	+4	8°		
49	Tmp	88	2.760	13:34:15	13:34:23	0	+5	8°		
50	Tmp	92	1.520	13:42:20	13:42:11	0	-18	8°		
51	Tmp	93	1.980	13:43:19	13:43:14	0	-6	8°		
52	Tmp	94	2.730	13:45:12	13:46:23	0	+68	8°		
53	Tmp	95	3.140	13:45:49	13:46:52	0	+60	7°		
54	Tmp	95	3.830	13:47:24	13:48:32	0	+65	7°		
55	Tmp	97	4.650	13:48:47		0	+1800	12°		
56	Tmp	100	0.650	13:53:46	13:53:35	0	-24	12°		
57	Tmp	101	1.030	13:54:26	13:54:29	0	+0	12°		
58	Tmp	101	1.800	13:55:26	13:55:26	0	+0	12°		
59	Tmp	101	3.670	13:57:53	13:57:53	0	+0	12°		
60	Tmp	102	6.100	14:00:36	14:00:33	0	-0	12°		
Etapa B	Num	219	Pen	0	PCZ	11	Total PP	2876	PG	9

N u m	223	Equipe	223 / Leonardo Pexeiro					
		Patrocinador						
		Cat / NL / Largada	NOVATOS / 61 / 09:30:00	Cidade	Ssa			

PC	TP	TRC	KmPC	Ideal	Passagem	Pen	Pontos	Col
1	Tmp	4	0.420	09:47:30	09:47:41	0	+8	5°
2	Tmp	5	3.520	09:51:35	09:51:51	0	+13	5°
3	Tmp	9	0.900	09:53:20	09:53:37	0	+14	4°
4	Tmp	11	1.950	09:55:06	09:55:05	0	-0	3°
5	Tmp	14	3.060	09:57:28	09:57:45	0	+14	3°
6	Tmp	18	1.990	10:07:26	10:07:35	0	+6	3°
8	Tmp	23	4.500	10:12:54	10:14:01	0	+64	4°
9	Tmp	23	4.900	10:14:00	10:17:35	0	+212	4°
10	Tmp	26	0.400	10:23:05	10:23:34	0	+26	5°
11	Tmp	28	5.500	10:31:33	10:31:30	0	-0	5°
12	Tmp	30	2.200	10:36:03	10:35:57	0	-9	5°
16	Tmp	36	0.340	10:50:05	10:50:04	0	-0	5°
17	Tmp	36	2.270	10:52:43	10:52:51	0	+5	5°
18	Tmp	39	0.310	11:03:22	11:03:23	0	+0	5°
19	Tmp	42	2.320	11:06:53	11:07:04	0	+8	5°
20	Tmp	46	2.340	11:15:03	11:15:10	0	+4	5°
21	Tmp	46	3.050	11:16:14	11:16:21	0	+4	5°
22	Tmp	47	5.930	11:20:11	11:20:11	0	+0	5°
23	Tmp	49	7.360	11:22:18	11:22:18	0	+0	5°
24	Tmp	51	8.250	11:24:14	11:24:31	0	+14	5°
25	Tmp	51	9.380	11:26:01	11:25:51	0	-21	5°
26	Tmp	54	6.500	11:34:08	11:33:11	0	-162	7°
27	Tmp	54	6.720	11:34:34	11:34:46	0	+9	7°

PC	TP	TRC	KmPC	Ideal	Passagem	Pen	Pontos	Col					
Num	223	A	7°	PG	14	B	2°	PG	22	Tot PG	36	Col.	3°



Moto Clube / Princesa Off Road / Zaitec									
.									

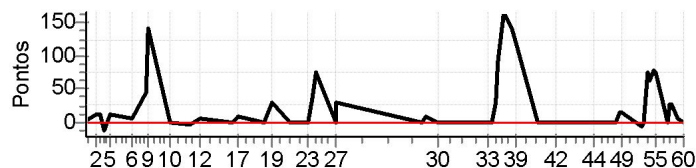
Etapa A	Num	223	Pen	0	PCZ	6	Total PP	593	PG	14
28	Tmp	58	2.230	12:11:01	12:11:08	0	+4	6°		
29	Tmp	59	2.880	12:12:58	12:13:06	0	+5	4°		
30	Tmp	60	5.550	12:17:46	12:17:48	0	+0	4°		
31	Tmp	64	2.520	12:32:30	12:32:32	0	+0	3°		
32	Tmp	65	4.770	12:35:48	12:35:50	0	+0	2°		
33	Tmp	67	6.830	12:39:45	12:39:45	0	+0	2°		
34	Tmp	69	7.380	12:41:14	12:41:18	0	+1	3°		
35	Tmp	69	7.920	12:42:52	12:43:05	0	+10	2°		
36	Tmp	69	8.290	12:43:58	12:45:06	0	+65	3°		
37	Tmp	69	9.150	12:46:33	12:47:56	0	+80	3°		
38	Tmp	71	1.200	12:49:19	12:50:27	0	+65	3°		
39	Tmp	71	2.230	12:51:08	12:51:53	0	+42	3°		
40	Tmp	76	5.100	13:00:52	13:00:52	0	+0	3°		
41	Tmp	76	7.200	13:03:44	13:03:51	0	+4	3°		
42	Tmp	77	3.910	13:08:42	13:08:47	0	+2	3°		
43	Tmp	80	0.310	13:21:29	13:21:35	0	+3	3°		
44	Tmp	81	3.010	13:24:46	13:24:49	0	+0	3°		
45	Tmp	84	5.450	13:28:45	13:28:47	0	+0	3°		
46	Tmp	85	8.060	13:32:12	13:32:14	0	+0	3°		
47	Tmp	87	1.100	13:33:38	13:33:41	0	+0	3°		
48	Tmp	87	2.250	13:35:47	13:36:09	0	+19	3°		
49	Tmp	88	2.760	13:36:45	13:37:01	0	+13	3°		
50	Tmp	92	1.520	13:44:50	13:45:00	0	+7	3°		
51	Tmp	93	1.980	13:45:49	13:46:04	0	+12	3°		
52	Tmp	94	2.730	13:47:42	13:48:45	0	+60	3°		
53	Tmp	95	3.140	13:48:19	13:49:07	0	+45	3°		
54	Tmp	95	3.830	13:49:54	13:50:45	0	+48	3°		
55	Tmp	97	4.650	13:51:17	13:52:45	0	+85	3°		
56	Tmp	100	0.650	13:56:16	13:56:16	0	+0	3°		
57	Tmp	101	1.030	13:56:56	13:57:05	0	+6	3°		
58	Tmp	101	1.800	13:57:56	13:58:04	0	+5	3°		
59	Tmp	101	3.670	14:00:23	14:00:30	0	+4	3°		
60	Tmp	102	6.100	14:03:06	14:03:02	0	-3	2°		

Etapa B	Num	223	Pen	0	PCZ	10	Total PP	588	PG	22
---------	-----	-----	-----	---	-----	----	----------	-----	----	----

N u m	270	Equipe	270 / Aliomar Magalhães (shakira)						
		Patrocinador							
		Cat / NL / Largada	NOVATOS / 55 / 09:27:00	Cidade	Alagoinhas				

PC	Tp	Trc	KmPC	Ideal	Passagem	Pen	Pontos	Col
1	Tmp	4	0.420	09:44:30	09:44:36	0	+3	2°
2	Tmp	5	3.520	09:48:35	09:48:51	0	+13	3°
3	Tmp	9	0.900	09:50:20	09:50:36	0	+13	3°
4	Tmp	11	1.950	09:52:06	09:51:59	0	-12	4°
5	Tmp	14	3.060	09:54:28	09:54:42	0	+11	4°
6	Tmp	18	1.990	10:04:26	10:04:36	0	+7	4°
8	Tmp	23	4.500	10:09:54	10:10:43	0	+46	3°
9	Tmp	23	4.900	10:11:00	10:13:25	0	+142	3°
10	Tmp	26	0.400	10:20:05	10:20:02	0	-0	3°
11	Tmp	28	5.500	10:28:33	10:28:29	0	-3	3°
12	Tmp	30	2.200	10:33:03	10:33:13	0	+7	3°
16	Tmp	36	0.340	10:47:05	10:47:05	0	+0	3°
17	Tmp	36	2.270	10:49:43	10:49:55	0	+9	3°
18	Tmp	39	0.310	11:00:22	11:00:21	0	-0	3°
19	Tmp	42	2.320	11:03:53	11:04:25	0	+29	3°
20	Tmp	46	2.340	11:12:03	11:12:03	0	+0	3°
21	Tmp	46	3.050	11:13:14	11:13:14	0	+0	3°
22	Tmp	47	5.930	11:17:11	11:17:11	0	+0	3°
23	Tmp	49	7.360	11:19:18	11:19:19	0	+0	3°
24	Tmp	51	8.250	11:21:14	11:21:51	0	+34	3°
25	Tmp	51	9.380	11:23:01	11:24:19	0	+75	4°
26	Tmp	54	6.500	11:31:08	11:31:10	0	+0	4°
27	Tmp	54	6.720	11:31:34	11:32:06	0	+29	4°

PC	Tp	Trc	KmPC	Ideal	Passagem	Pen	Pontos	Col
Num 270	A	4°	PG 18	B	4°	PG 18	Tot PG 36	Col. 4°



Moto Clube / Princesa Off Road / Zaitec	
.	

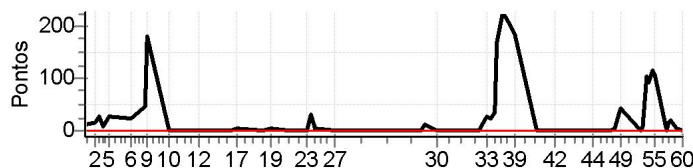
Etapa A	Num	270	Pen	0	PCZ	8	Total PP	433	PG	18
28	Tmp	58	2.230	12:08:01	12:08:00	0	-0	1°		
29	Tmp	59	2.880	12:09:58	12:10:11	0	+10	5°		
30	Tmp	60	5.550	12:14:46	12:14:47	0	+0	5°		
31	Tmp	64	2.520	12:29:30	12:29:31	0	+0	4°		
32	Tmp	65	4.770	12:32:48	12:32:50	0	+0	3°		
33	Tmp	67	6.830	12:36:45	12:36:47	0	+0	3°		
34	Tmp	69	7.380	12:38:14	12:38:16	0	+0	2°		
35	Tmp	69	7.920	12:39:52	12:40:24	0	+29	4°		
36	Tmp	69	8.290	12:40:58	12:42:31	0	+90	4°		
37	Tmp	69	9.150	12:43:33	12:46:21	0	+165	5°		
38	Tmp	71	1.200	12:46:19	12:48:42	0	+140	5°		
39	Tmp	71	2.230	12:48:08	12:50:11	0	+120	5°		
40	Tmp	76	5.100	12:57:52	12:57:55	0	+0	5°		
41	Tmp	76	7.200	13:00:44	13:00:46	0	+0	5°		
42	Tmp	77	3.910	13:05:42	13:05:40	0	-0	5°		
43	Tmp	80	0.310	13:18:29	13:18:27	0	-0	5°		
44	Tmp	81	3.010	13:21:46	13:21:49	0	+0	5°		
45	Tmp	84	5.450	13:25:45	13:25:46	0	+0	5°		
46	Tmp	85	8.060	13:29:12	13:29:10	0	-0	5°		
47	Tmp	87	1.100	13:30:38	13:30:40	0	+0	5°		
48	Tmp	87	2.250	13:32:47	13:33:04	0	+14	5°		
49	Tmp	88	2.760	13:33:45	13:34:03	0	+15	5°		
50	Tmp	92	1.520	13:41:50	13:41:45	0	-6	5°		
51	Tmp	93	1.980	13:42:49	13:42:52	0	+0	5°		
52	Tmp	94	2.730	13:44:42	13:46:00	0	+75	5°		
53	Tmp	95	3.140	13:45:19	13:46:26	0	+64	4°		
54	Tmp	95	3.830	13:46:54	13:48:15	0	+78	4°		
55	Tmp	97	4.650	13:48:17	13:49:35	0	+75	4°		
56	Tmp	100	0.650	13:53:16	13:53:15	0	-0	4°		
57	Tmp	101	1.030	13:53:56	13:54:25	0	+26	4°		
58	Tmp	101	1.800	13:54:56	13:55:25	0	+26	4°		
59	Tmp	101	3.670	13:57:23	13:57:31	0	+5	4°		
60	Tmp	102	6.100	14:00:06	14:00:07	0	+0	4°		

Etapa B	Num	270	Pen	0	PCZ	17	Total PP	938	PG	18
---------	-----	-----	-----	---	-----	----	----------	-----	----	----

N u m	282	Equipe	282 / Marcus Calheira (balalau)					
		Patrocinador						
		Cat / NL / Largada	NOVATOS / 53 / 09:26:00	Cidade	Ssa			

PC	TP	TRC	KmPC	Ideal	Passagem	Pen	Pontos	Col
1	Tmp	4	0.420	09:43:30	09:43:45	0	+12	10°
2	Tmp	5	3.520	09:47:35	09:47:55	0	+17	6°
3	Tmp	9	0.900	09:49:20	09:49:50	0	+27	7°
4	Tmp	11	1.950	09:51:06	09:51:17	0	+8	6°
5	Tmp	14	3.060	09:53:28	09:53:58	0	+27	7°
6	Tmp	18	1.990	10:03:26	10:03:52	0	+23	7°
8	Tmp	23	4.500	10:08:54	10:09:43	0	+46	5°
9	Tmp	23	4.900	10:10:00	10:13:04	0	+181	5°
10	Tmp	26	0.400	10:19:05	10:19:04	0	-0	4°
11	Tmp	28	5.500	10:27:33	10:27:31	0	-0	4°
12	Tmp	30	2.200	10:32:03	10:32:01	0	-0	4°
16	Tmp	36	0.340	10:46:05	10:46:05	0	+0	4°
17	Tmp	36	2.270	10:48:43	10:48:51	0	+5	4°
18	Tmp	39	0.310	10:59:22	10:59:24	0	+0	4°
19	Tmp	42	2.320	11:02:53	11:03:00	0	+4	4°
20	Tmp	46	2.340	11:11:03	11:11:03	0	+0	4°
21	Tmp	46	3.050	11:12:14	11:12:17	0	+0	4°
22	Tmp	47	5.930	11:16:11	11:16:11	0	+0	4°
23	Tmp	49	7.360	11:18:18	11:18:22	0	+1	4°
24	Tmp	51	8.250	11:20:14	11:20:46	0	+29	4°
25	Tmp	51	9.380	11:22:01	11:22:07	0	+3	3°
26	Tmp	54	6.500	11:30:08	11:30:07	0	-0	3°
27	Tmp	54	6.720	11:30:34	11:30:32	0	-0	3°

PC	TP	TRC	KmPC	Ideal	Passagem	Pen	Pontos	Col					
Num	282	A	3°	PG	20	B	7°	PG	14	Tot PG	34	Col.	5°



Moto Clube / Princesa Off Road / Zaitec									
.									

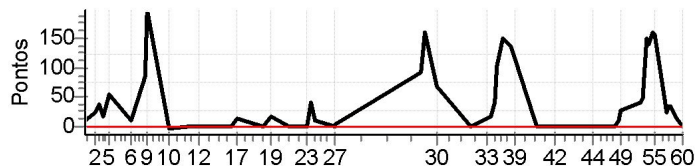
Etapa A	Num	282	Pen	0	PCZ	10	Total PP	383	PG	20
28	Tmp	58	2.230	12:07:01	12:06:59	0	-0	2°		
29	Tmp	59	2.880	12:08:58	12:09:11	0	+10	6°		
30	Tmp	60	5.550	12:13:46	12:13:45	0	-0	6°		
31	Tmp	64	2.520	12:28:30	12:28:32	0	+0	5°		
32	Tmp	65	4.770	12:31:48	12:31:49	0	+0	4°		
33	Tmp	67	6.830	12:35:45	12:36:15	0	+27	5°		
34	Tmp	69	7.380	12:37:14	12:37:39	0	+22	5°		
35	Tmp	69	7.920	12:38:52	12:39:29	0	+34	5°		
36	Tmp	69	8.290	12:39:58	12:42:50	0	+169	6°		
37	Tmp	69	9.150	12:42:33	12:46:24	0	+228	8°		
38	Tmp	71	1.200	12:45:19	12:48:43	0	+201	9°		
39	Tmp	71	2.230	12:47:08	12:50:15	0	+184	9°		
40	Tmp	76	5.100	12:56:52	12:56:55	0	+0	9°		
41	Tmp	76	7.200	12:59:44	12:59:46	0	+0	9°		
42	Tmp	77	3.910	13:04:42	13:04:46	0	+1	9°		
43	Tmp	80	0.310	13:17:29	13:17:31	0	+0	9°		
44	Tmp	81	3.010	13:20:46	13:20:48	0	+0	9°		
45	Tmp	84	5.450	13:24:45	13:24:49	0	+1	9°		
46	Tmp	85	8.060	13:28:12	13:28:12	0	+0	9°		
47	Tmp	87	1.100	13:29:38	13:29:43	0	+2	9°		
48	Tmp	87	2.250	13:31:47	13:32:22	0	+32	9°		
49	Tmp	88	2.760	13:32:45	13:33:32	0	+44	10°		
50	Tmp	92	1.520	13:40:50	13:40:51	0	+0	9°		
51	Tmp	93	1.980	13:41:49	13:41:59	0	+7	9°		
52	Tmp	94	2.730	13:43:42	13:45:28	0	+103	9°		
53	Tmp	95	3.140	13:44:19	13:45:55	0	+93	9°		
54	Tmp	95	3.830	13:45:54	13:47:52	0	+115	9°		
55	Tmp	97	4.650	13:47:17	13:49:08	0	+108	8°		
56	Tmp	100	0.650	13:52:16	13:52:19	0	+0	8°		
57	Tmp	101	1.030	13:52:56	13:53:15	0	+16	8°		
58	Tmp	101	1.800	13:53:56	13:54:17	0	+18	7°		
59	Tmp	101	3.670	13:56:23	13:56:28	0	+2	7°		
60	Tmp	102	6.100	13:59:06	13:59:09	0	+0	7°		

Etapa B	Num	282	Pen	0	PCZ	12	Total PP	1417	PG	14
---------	-----	-----	-----	---	-----	----	----------	------	----	----

N u m	297	Equipe	297 / Aurelio Gomes (murrinha)					
		Patrocinador						
		Cat / NL / Largada	NOVATOS / 60 / 09:29:30	Cidade	Feira			

PC	TP	TRC	KmPC	Ideal	Passagem	Pen	Pontos	Col
1	Tmp	4	0.420	09:47:00	09:47:13	0	+10	7°
2	Tmp	5	3.520	09:51:05	09:51:33	0	+25	9°
3	Tmp	9	0.900	09:52:50	09:53:30	0	+37	11°
4	Tmp	11	1.950	09:54:36	09:54:58	0	+19	11°
5	Tmp	14	3.060	09:56:58	09:57:56	0	+55	11°
6	Tmp	18	1.990	10:06:56	10:07:10	0	+11	11°
8	Tmp	23	4.500	10:12:24	10:13:52	0	+85	8°
9	Tmp	23	4.900	10:13:30	10:16:51	0	+198	7°
10	Tmp	26	0.400	10:22:35	10:22:31	0	-3	7°
11	Tmp	28	5.500	10:31:03	10:31:02	0	-0	7°
12	Tmp	30	2.200	10:35:33	10:35:30	0	-0	7°
16	Tmp	36	0.340	10:49:35	10:49:38	0	+0	7°
17	Tmp	36	2.270	10:52:13	10:52:31	0	+15	7°
18	Tmp	39	0.310	11:02:52	11:02:51	0	-0	7°
19	Tmp	42	2.320	11:06:23	11:06:45	0	+19	7°
20	Tmp	46	2.340	11:14:33	11:14:35	0	+0	7°
21	Tmp	46	3.050	11:15:44	11:15:46	0	+0	7°
22	Tmp	47	5.930	11:19:41	11:19:43	0	+0	7°
23	Tmp	49	7.360	11:21:48	11:21:51	0	+0	7°
24	Tmp	51	8.250	11:23:44	11:24:27	0	+40	7°
25	Tmp	51	9.380	11:25:31	11:25:45	0	+11	7°
26	Tmp	54	6.500	11:33:38	11:33:43	0	+2	6°
27	Tmp	54	6.720	11:34:04	11:34:11	0	+4	6°

PC	TP	TRC	KmPC	Ideal	Passagem	Pen	Pontos	Col					
Num	297	A	6°	PG	15	B	9°	PG	12	Tot PG	27	Col.	8°



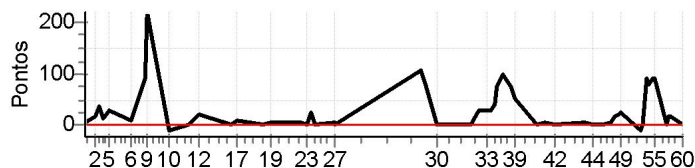
Moto Clube / Princesa Off Road / Zaitec	
.	

Etapa A	Num	297	Pen	0	PCZ	8	Total PP	534	PG	15
28	Tmp	58	2.230	12:10:31	12:12:06	0	+92	10°		
29	Tmp	59	2.880	12:12:28	12:15:10	0	+159	12°		
30	Tmp	60	5.550	12:17:16	12:18:29	0	+70	12°		
31	Tmp	64	2.520	12:32:00	12:32:03	0	+0	12°		
32	Tmp	65	4.770	12:35:18	12:35:28	0	+7	12°		
33	Tmp	67	6.830	12:39:15	12:39:32	0	+14	12°		
34	Tmp	69	7.380	12:40:44	12:41:04	0	+17	12°		
35	Tmp	69	7.920	12:42:22	12:43:05	0	+40	12°		
36	Tmp	69	8.290	12:43:28	12:45:14	0	+103	12°		
37	Tmp	69	9.150	12:46:03	12:48:38	0	+152	12°		
38	Tmp	71	1.200	12:48:49	12:51:07	0	+135	11°		
39	Tmp	71	2.230	12:50:38	12:52:38	0	+117	11°		
40	Tmp	76	5.100	13:00:22	13:00:23	0	+0	11°		
41	Tmp	76	7.200	13:03:14	13:03:17	0	+0	10°		
42	Tmp	77	3.910	13:08:12	13:08:17	0	+2	10°		
43	Tmp	80	0.310	13:20:59	13:21:00	0	+0	10°		
44	Tmp	81	3.010	13:24:16	13:24:19	0	+0	10°		
45	Tmp	84	5.450	13:28:15	13:28:17	0	+0	10°		
46	Tmp	85	8.060	13:31:42	13:31:41	0	-0	10°		
47	Tmp	87	1.100	13:33:08	13:33:10	0	+0	10°		
48	Tmp	87	2.250	13:35:17	13:35:32	0	+12	10°		
49	Tmp	88	2.760	13:36:15	13:36:47	0	+29	9°		
50	Tmp	92	1.520	13:44:20	13:45:03	0	+40	10°		
51	Tmp	93	1.980	13:45:19	13:46:10	0	+48	10°		
52	Tmp	94	2.730	13:47:12	13:49:44	0	+149	10°		
53	Tmp	95	3.140	13:47:49	13:50:13	0	+141	10°		
54	Tmp	95	3.830	13:49:24	13:52:08	0	+161	10°		
55	Tmp	97	4.650	13:50:47	13:53:28	0	+158	9°		
56	Tmp	100	0.650	13:55:46	13:56:13	0	+24	9°		
57	Tmp	101	1.030	13:56:26	13:57:05	0	+36	9°		
58	Tmp	101	1.800	13:57:26	13:58:05	0	+36	9°		
59	Tmp	101	3.670	13:59:53	14:00:10	0	+14	9°		
60	Tmp	102	6.100	14:02:36	14:02:36	0	+0	9°		
Etapa B	Num	297	Pen	0	PCZ	9	Total PP	1756	PG	12

N u m	327	Equipe	327 / Mauricio Souza (rabujento)					
		Patrocinador						
		Cat / NL / Largada	NOVATOS / 59 / 09:29:00	Cidade	Ssa			

PC	Tp	Trc	KmPC	Ideal	Passagem	Pen	Pontos	Col
1	Tmp	4	0.420	09:46:30	09:46:36	0	+3	1°
2	Tmp	5	3.520	09:50:35	09:50:52	0	+14	4°
3	Tmp	9	0.900	09:52:20	09:52:57	0	+34	6°
4	Tmp	11	1.950	09:54:06	09:54:19	0	+10	5°
5	Tmp	14	3.060	09:56:28	09:56:58	0	+27	6°
6	Tmp	18	1.990	10:06:26	10:06:36	0	+7	5°
8	Tmp	23	4.500	10:11:54	10:13:29	0	+92	6°
9	Tmp	23	4.900	10:13:00	10:16:43	0	+220	6°
10	Tmp	26	0.400	10:22:05	10:21:58	0	-12	6°
11	Tmp	28	5.500	10:30:33	10:30:36	0	+0	6°
12	Tmp	30	2.200	10:35:03	10:35:24	0	+18	6°
16	Tmp	36	0.340	10:49:05	10:49:09	0	+1	6°
17	Tmp	36	2.270	10:51:43	10:51:55	0	+9	6°
18	Tmp	39	0.310	11:02:22	11:02:23	0	+0	6°
19	Tmp	42	2.320	11:05:53	11:05:59	0	+3	6°
20	Tmp	46	2.340	11:14:03	11:14:08	0	+2	6°
21	Tmp	46	3.050	11:15:14	11:15:21	0	+4	6°
22	Tmp	47	5.930	11:19:11	11:19:18	0	+4	6°
23	Tmp	49	7.360	11:21:18	11:21:20	0	+0	6°
24	Tmp	51	8.250	11:23:14	11:23:40	0	+23	6°
25	Tmp	51	9.380	11:25:01	11:25:01	0	+0	6°
26	Tmp	54	6.500	11:33:08	11:33:14	0	+3	5°
27	Tmp	54	6.720	11:33:34	11:33:38	0	+1	5°

PC	Tp	Trc	KmPC	Ideal	Passagem	Pen	Pontos	Col					
Num	327	A	5°	PG	16	B	5°	PG	16	Tot PG	32	Col.	6°



Moto Clube / Princesa Off Road / Zaitec	
.	

Etapa A	Num	327	Pen	0	PCZ	4	Total PP	487	PG	16
28	Tmp	58	2.230	12:10:01	12:11:49	0	+105	12°		
29	Tmp	59	2.880	12:11:58	12:13:23	0	+82	10°		
30	Tmp	60	5.550	12:16:46	12:16:48	0	+0	10°		
31	Tmp	64	2.520	12:31:30	12:31:33	0	+0	10°		
32	Tmp	65	4.770	12:34:48	12:35:20	0	+29	10°		
33	Tmp	67	6.830	12:38:45	12:39:17	0	+29	10°		
34	Tmp	69	7.380	12:40:14	12:40:44	0	+27	10°		
35	Tmp	69	7.920	12:41:52	12:42:35	0	+40	10°		
36	Tmp	69	8.290	12:42:58	12:44:14	0	+73	9°		
37	Tmp	69	9.150	12:45:33	12:47:16	0	+100	7°		
38	Tmp	71	1.200	12:48:19	12:49:37	0	+75	6°		
39	Tmp	71	2.230	12:50:08	12:51:01	0	+50	6°		
40	Tmp	76	5.100	12:59:52	12:59:52	0	+0	6°		
41	Tmp	76	7.200	13:02:44	13:02:52	0	+5	6°		
42	Tmp	77	3.910	13:07:42	13:07:44	0	+0	6°		
43	Tmp	80	0.310	13:20:29	13:20:34	0	+2	6°		
44	Tmp	81	3.010	13:23:46	13:23:46	0	+0	6°		
45	Tmp	84	5.450	13:27:45	13:27:48	0	+0	6°		
46	Tmp	85	8.060	13:31:12	13:31:18	0	+3	6°		
47	Tmp	87	1.100	13:32:38	13:32:58	0	+17	6°		
48	Tmp	87	2.250	13:34:47	13:35:11	0	+21	6°		
49	Tmp	88	2.760	13:35:45	13:36:11	0	+23	6°		
50	Tmp	92	1.520	13:43:50	13:43:43	0	-12	6°		
51	Tmp	93	1.980	13:44:49	13:44:49	0	+0	6°		
52	Tmp	94	2.730	13:46:42	13:48:14	0	+89	6°		
53	Tmp	95	3.140	13:47:19	13:48:40	0	+78	6°		
54	Tmp	95	3.830	13:48:54	13:50:29	0	+92	5°		
55	Tmp	97	4.650	13:50:17	13:51:49	0	+89	5°		
56	Tmp	100	0.650	13:55:16	13:55:20	0	+1	5°		
57	Tmp	101	1.030	13:55:56	13:56:13	0	+14	5°		
58	Tmp	101	1.800	13:56:56	13:57:14	0	+15	5°		
59	Tmp	101	3.670	13:59:23	13:59:33	0	+7	5°		
60	Tmp	102	6.100	14:02:06	14:02:06	0	+0	5°		

Etapa B	Num	327	Pen	0	PCZ	8	Total PP	1078	PG	16
---------	-----	-----	-----	---	-----	---	----------	------	----	----