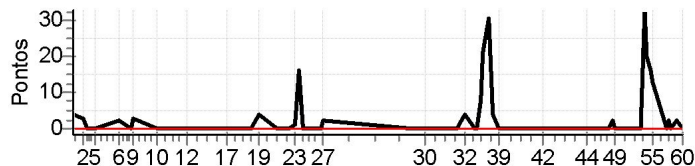


<b>N u m</b>	<b>1</b>	<b>Equipe</b>	1 / Caio Costa (cabrito)						
		<b>Patrocinador</b>							
		<b>Cat / NL / Largada</b>	GRADUADOS / 4 / 09:01:30	<b>Cidade</b>	Itaberaba				

PC	Tp	Trc	KmPC	Ideal	Passagem	Pen	Pontos	Col
1	Tmp	4	0.420	09:18:53	09:19:00	0	+4	1°
2	Tmp	5	3.520	09:22:46	09:22:52	0	+3	1°
3	Tmp	9	0.900	09:24:23	09:24:24	0	+0	1°
4	Tmp	11	1.950	09:26:00	09:25:59	0	-0	1°
5	Tmp	14	3.060	09:28:09	09:28:09	0	+0	1°
6	Tmp	18	1.990	09:37:56	09:38:01	0	+2	1°
8	Tmp	23	4.500	09:42:51	09:42:53	0	+0	1°
9	Tmp	23	4.900	09:43:46	09:43:52	0	+3	1°
10	Tmp	26	0.400	09:53:37	09:53:35	0	-0	1°
11	Tmp	28	5.500	10:01:34	10:01:31	0	-0	1°
12	Tmp	30	2.200	10:05:43	10:05:43	0	+0	1°
16	Tmp	36	0.340	10:19:44	10:19:46	0	+0	1°
17	Tmp	36	2.270	10:22:16	10:22:19	0	+0	1°
18	Tmp	39	0.310	10:32:50	10:32:51	0	+0	1°
19	Tmp	42	2.320	10:36:06	10:36:13	0	+4	1°
20	Tmp	46	2.340	10:43:42	10:43:42	0	+0	1°
21	Tmp	46	3.050	10:44:49	10:44:50	0	+0	1°
22	Tmp	47	5.930	10:48:35	10:48:37	0	+0	1°
23	Tmp	49	7.360	10:50:36	10:50:40	0	+1	1°
24	Tmp	51	8.250	10:52:17	10:52:36	0	+16	1°
25	Tmp	51	9.380	10:53:54	10:53:55	0	+0	1°
26	Tmp	54	6.500	11:01:42	11:01:42	0	+0	1°
27	Tmp	54	6.720	11:02:08	11:02:13	0	+2	1°

PC	Tp	Trc	KmPC	Ideal	Passagem	Pen	Pontos	Col
Num 1	A	1°	PG 25	B	1°	PG 25	Tot PG 50	Col. 1°



<b>Moto Clube / Princesa Off Road / Zaitec</b>	
.	

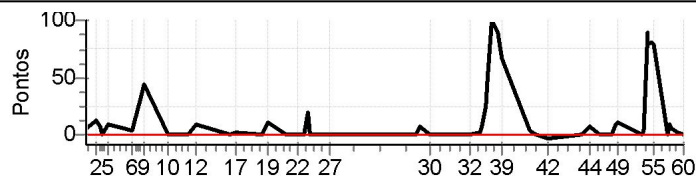
Etapa A	Num	1	Pen	0	PCZ	15	Total PP	35	PG	25
28	Tmp	58	2.230	11:38:28	11:38:27	0	-0	4°		
29	Tmp	59	2.880	11:40:05	11:40:04	0	-0	1°		
30	Tmp	60	5.550	11:44:24	11:44:24	0	+0	1°		
31	Tmp	64	2.520	11:58:18	11:58:20	0	+0	1°		
32	Tmp	65	4.770	12:01:24	12:01:31	0	+4	1°		
33	Tmp	67	6.830	12:05:06	12:05:06	0	+0	1°		
34	Tmp	69	7.380	12:06:22	12:06:25	0	+0	1°		
35	Tmp	69	7.920	12:07:43	12:07:54	0	+8	1°		
36	Tmp	69	8.290	12:08:39	12:09:03	0	+21	1°		
37	Tmp	69	9.150	12:10:48	12:11:22	0	+31	1°		
38	Tmp	71	1.200	12:13:12	12:13:19	0	+4	1°		
39	Tmp	71	2.230	12:14:55	12:14:56	0	+0	1°		
40	Tmp	76	5.100	12:26:28	12:26:30	0	+0	1°		
41	Tmp	76	7.200	12:29:12	12:29:14	0	+0	1°		
42	Tmp	77	3.910	12:33:51	12:33:53	0	+0	1°		
43	Tmp	80	0.310	12:48:20	12:48:21	0	+0	1°		
44	Tmp	81	3.010	12:51:31	12:51:33	0	+0	1°		
45	Tmp	84	5.450	12:56:24	12:56:25	0	+0	1°		
46	Tmp	85	8.060	12:59:36	12:59:34	0	-0	1°		
47	Tmp	87	1.100	13:00:59	13:01:01	0	+0	1°		
48	Tmp	87	2.250	13:02:54	13:02:59	0	+2	1°		
49	Tmp	88	2.760	13:03:45	13:03:44	0	-0	1°		
50	Tmp	92	1.520	13:13:33	13:13:32	0	-0	1°		
51	Tmp	93	1.980	13:14:24	13:14:25	0	+0	1°		
52	Tmp	94	2.730	13:16:01	13:16:37	0	+33	1°		
53	Tmp	95	3.140	13:16:36	13:16:59	0	+20	1°		
54	Tmp	95	3.830	13:17:59	13:18:18	0	+16	1°		
55	Tmp	97	4.650	13:19:14	13:19:30	0	+13	1°		
56	Tmp	100	0.650	13:24:58	13:24:58	0	+0	1°		
57	Tmp	101	1.030	13:25:34	13:25:39	0	+2	1°		
58	Tmp	101	1.800	13:26:32	13:26:34	0	+0	1°		
59	Tmp	101	3.670	13:28:52	13:28:57	0	+2	1°		
60	Tmp	102	6.100	13:31:30	13:31:30	0	+0	1°		

Etapa B	Num	1	Pen	0	PCZ	21	Total PP	156	PG	25
---------	-----	---	-----	---	-----	----	----------	-----	----	----

<b>N u m</b>	<b>17</b>	<b>Equipe</b>	17 / Daniel Dantas (boa Vida)						
		<b>Patrocinador</b>							
		<b>Cat / NL / Largada</b>	GRADUADOS / 1 / 09:00:00	<b>Cidade</b>	Feira				

PC	Tp	Trc	KmPC	Ideal	Passagem	Pen	Pontos	Col
1	Tmp	4	0.420	09:17:23	09:17:32	0	+6	2°
2	Tmp	5	3.520	09:21:16	09:21:32	0	+13	3°
3	Tmp	9	0.900	09:22:53	09:23:04	0	+8	2°
4	Tmp	11	1.950	09:24:30	09:24:31	0	+0	2°
5	Tmp	14	3.060	09:26:39	09:26:51	0	+9	2°
6	Tmp	18	1.990	09:36:26	09:36:33	0	+4	2°
8	Tmp	23	4.500	09:41:21	09:42:01	0	+37	2°
9	Tmp	23	4.900	09:42:16	09:43:03	0	+44	2°
10	Tmp	26	0.400	09:52:07	09:52:06	0	-0	2°
11	Tmp	28	5.500	10:00:04	10:00:04	0	+0	2°
12	Tmp	30	2.200	10:04:13	10:04:26	0	+10	2°
16	Tmp	36	0.340	10:18:14	10:18:17	0	+0	2°
17	Tmp	36	2.270	10:20:46	10:20:52	0	+3	2°
18	Tmp	39	0.310	10:31:20	10:31:22	0	+0	2°
19	Tmp	42	2.320	10:34:36	10:34:50	0	+11	2°
20	Tmp	46	2.340	10:42:12	10:42:15	0	+0	2°
21	Tmp	46	3.050	10:43:19	10:43:20	0	+0	2°
22	Tmp	47	5.930	10:47:05	10:47:09	0	+1	2°
23	Tmp	49	7.360	10:49:06	10:49:09	0	+0	2°
24	Tmp	51	8.250	10:50:47	10:51:10	0	+20	2°
25	Tmp	51	9.380	10:52:24	10:52:27	0	+0	2°
26	Tmp	54	6.500	11:00:12	11:00:13	0	+0	2°
27	Tmp	54	6.720	11:00:38	11:00:37	0	-0	2°

PC	Tp	Trc	KmPC	Ideal	Passagem	Pen	Pontos	Col
Num 17	A	2°	PG 22	B	6°	PG 15	Tot PG 37	Col. 3°



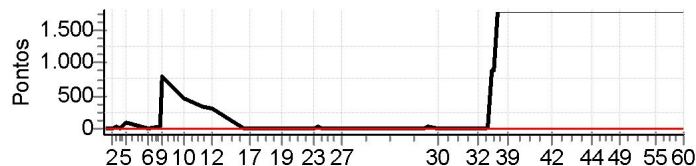
<b>Moto Clube / Princesa Off Road / Zaitec</b>	
.	

Etapa A	Num	17	Pen	0	PCZ	11	Total PP	166	PG	22
28	Tmp	58	2.230	11:36:58	11:36:57	0	-0	7°		
29	Tmp	59	2.880	11:38:35	11:38:45	0	+7	4°		
30	Tmp	60	5.550	11:42:54	11:42:55	0	+0	4°		
31	Tmp	64	2.520	11:56:48	11:56:49	0	+0	3°		
32	Tmp	65	4.770	11:59:54	11:59:55	0	+0	2°		
33	Tmp	67	6.830	12:03:36	12:03:41	0	+2	3°		
34	Tmp	69	7.380	12:04:52	12:05:02	0	+7	3°		
35	Tmp	69	7.920	12:06:13	12:06:41	0	+25	4°		
36	Tmp	69	8.290	12:07:09	12:08:05	0	+53	4°		
37	Tmp	69	9.150	12:09:18	12:11:01	0	+100	5°		
38	Tmp	71	1.200	12:11:42	12:13:15	0	+90	5°		
39	Tmp	71	2.230	12:13:25	12:14:35	0	+67	5°		
40	Tmp	76	5.100	12:24:58	12:25:05	0	+4	5°		
41	Tmp	76	7.200	12:27:42	12:27:44	0	+0	5°		
42	Tmp	77	3.910	12:32:21	12:32:17	0	-3	5°		
43	Tmp	80	0.310	12:46:50	12:46:53	0	+0	5°		
44	Tmp	81	3.010	12:50:01	12:50:12	0	+8	5°		
45	Tmp	84	5.450	12:54:54	12:54:55	0	+0	5°		
46	Tmp	85	8.060	12:58:06	12:58:05	0	-0	5°		
47	Tmp	87	1.100	12:59:29	12:59:31	0	+0	5°		
48	Tmp	87	2.250	13:01:24	13:01:37	0	+10	5°		
49	Tmp	88	2.760	13:02:15	13:02:29	0	+11	5°		
50	Tmp	92	1.520	13:12:03	13:12:01	0	-0	5°		
51	Tmp	93	1.980	13:12:54	13:13:01	0	+4	5°		
52	Tmp	94	2.730	13:14:31	13:16:03	0	+89	5°		
53	Tmp	95	3.140	13:15:06	13:16:28	0	+79	5°		
54	Tmp	95	3.830	13:16:29	13:17:52	0	+80	5°		
55	Tmp	97	4.650	13:17:44	13:19:06	0	+79	5°		
56	Tmp	100	0.650	13:23:28	13:23:32	0	+1	5°		
57	Tmp	101	1.030	13:24:04	13:24:16	0	+9	6°		
58	Tmp	101	1.800	13:25:02	13:25:10	0	+5	6°		
59	Tmp	101	3.670	13:27:22	13:27:28	0	+3	6°		
60	Tmp	102	6.100	13:30:00	13:30:01	0	+0	6°		
Etapa B	Num	17	Pen	0	PCZ	11	Total PP	736	PG	15

<b>N u m</b>	<b>22</b>	<b>Equipe</b>	22 / Iuri Cunha (bip Bip)						
		<b>Patrocinador</b>							
		<b>Cat / NL / Largada</b>	GRADUADOS / 6 / 09:02:30	<b>Cidade</b>	Feira				

PC	Tp	Trc	KmPC	Ideal	Passagem	Pen	Pontos	Col
1	Tmp	4	0.420	09:19:53	09:20:05	0	+9	4°
2	Tmp	5	3.520	09:23:46	09:24:01	0	+12	4°
3	Tmp	9	0.900	09:25:23	09:25:46	0	+20	5°
4	Tmp	11	1.950	09:27:00	09:27:06	0	+3	5°
5	Tmp	14	3.060	09:29:09	09:30:37	0	+85	8°
6	Tmp	18	1.990	09:38:56	09:39:08	0	+9	8°
8	Tmp	23	4.500	09:43:51	09:44:29	0	+35	8°
9	Tmp	23	4.900	09:44:46	09:58:02	0	+793	8°
10	Tmp	26	0.400	09:54:37	10:02:06	0	+446	8°
11	Tmp	28	5.500	10:02:34	10:08:03	0	+326	8°
12	Tmp	30	2.200	10:06:43	10:12:02	0	+316	8°
16	Tmp	36	0.340	10:20:44	10:20:45	0	+0	8°
17	Tmp	36	2.270	10:23:16	10:23:24	0	+5	8°
18	Tmp	39	0.310	10:33:50	10:33:50	0	+0	8°
19	Tmp	42	2.320	10:37:06	10:37:20	0	+11	8°
20	Tmp	46	2.340	10:44:42	10:44:41	0	-0	8°
21	Tmp	46	3.050	10:45:49	10:45:47	0	-0	8°
22	Tmp	47	5.930	10:49:35	10:49:34	0	-0	8°
23	Tmp	49	7.360	10:51:36	10:51:39	0	+0	8°
24	Tmp	51	8.250	10:53:17	10:53:54	0	+34	8°
25	Tmp	51	9.380	10:54:54	10:55:10	0	+13	8°
26	Tmp	54	6.500	11:02:42	11:02:45	0	+0	8°
27	Tmp	54	6.720	11:03:08	11:03:06	0	-0	8°

PC	Tp	Trc	KmPC	Ideal	Passagem	Pen	Pontos	Col
Num 22	A	8°	PG 13	B	8°	PG 13	Tot PG 26	Col. 8°



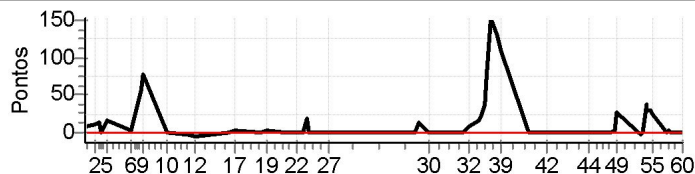
<b>Moto Clube / Princesa Off Road / Zaitec</b>	
.	

Etapa A	Num	22	Pen	0	PCZ	8	Total PP	2117	PG	13
28	Tmp	58	2.230	11:39:28	11:39:26	0	-0	3°		
29	Tmp	59	2.880	11:41:05	11:41:34	0	+26	7°		
30	Tmp	60	5.550	11:45:24	11:45:24	0	+0	7°		
31	Tmp	64	2.520	11:59:18	11:59:20	0	+0	7°		
32	Tmp	65	4.770	12:02:24	12:02:28	0	+1	7°		
33	Tmp	67	6.830	12:06:06	12:06:21	0	+12	5°		
34	Tmp	69	7.380	12:07:22	12:07:48	0	+23	7°		
35	Tmp	69	7.920	12:08:43	12:29:41	0	+900	8°		
36	Tmp	69	8.290	12:09:39	12:31:15	0	+900	8°		
37	Tmp	69	9.150	12:11:48	13:07:12	0	+1800	8°		
38	Tmp	71	1.200	12:14:12	13:09:47	0	+1800	8°		
39	Tmp	71	2.230	12:15:55	13:11:18	0	+1800	8°		
40	Tmp	76	5.100	12:27:28	13:15:48	0	+1800	8°		
41	Tmp	76	7.200	12:30:12	13:18:42	0	+1800	8°		
42	Tmp	77	3.910	12:34:51	13:22:47	0	+1800	8°		
43	Tmp	80	0.310	12:49:20	14:07:30	0	+1800	8°		
44	Tmp	81	3.010	12:52:31	14:09:57	0	+1800	8°		
45	Tmp	84	5.450	12:57:24	14:12:22	0	+1800	8°		
46	Tmp	85	8.060	13:00:36	14:15:31	0	+1800	8°		
47	Tmp	87	1.100	13:01:59	14:16:44	0	+1800	8°		
48	Tmp	87	2.250	13:03:54	14:18:43	0	+1800	8°		
49	Tmp	88	2.760	13:04:45	14:19:37	0	+1800	8°		
50	Tmp	92	1.520	13:14:33	14:24:57	0	+1800	8°		
51	Tmp	93	1.980	13:15:24	14:25:55	0	+1800	8°		
52	Tmp	94	2.730	13:17:01	14:28:42	0	+1800	8°		
53	Tmp	95	3.140	13:17:36	14:29:10	0	+1800	8°		
54	Tmp	95	3.830	13:18:59	14:43:13	0	+1800	8°		
55	Tmp	97	4.650	13:20:14		0	+1800	8°		
56	Tmp	100	0.650	13:25:58	14:55:05	0	+1800	8°		
57	Tmp	101	1.030	13:26:34	14:55:58	0	+1800	8°		
58	Tmp	101	1.800	13:27:32	14:57:08	0	+1800	8°		
59	Tmp	101	3.670	13:29:52	14:59:29	0	+1800	8°		
60	Tmp	102	6.100	13:32:30	15:01:59	0	+1800	8°		
Etapa B	Num	22	Pen	0	PCZ	3	Total PP	45062	PG	13

<b>N u m</b> <b>39</b>	<b>Equipe</b>	39 / Deraldo Cesar (galego)						
	<b>Patrocinador</b>							
	<b>Cat / NL / Largada</b>	GRADUADOS / 8 / 09:03:30	<b>Cidade</b>	Feira				

PC	Tp	Trc	KmPC	Ideal	Passagem	Pen	Pontos	Col
1	Tmp	4	0.420	09:20:53	09:21:03	0	+7	3°
2	Tmp	5	3.520	09:24:46	09:24:58	0	+9	2°
3	Tmp	9	0.900	09:26:23	09:26:38	0	+12	3°
4	Tmp	11	1.950	09:28:00	09:27:58	0	-0	3°
5	Tmp	14	3.060	09:30:09	09:30:28	0	+16	3°
6	Tmp	18	1.990	09:39:56	09:40:02	0	+3	3°
8	Tmp	23	4.500	09:44:51	09:45:50	0	+56	5°
9	Tmp	23	4.900	09:45:46	09:47:06	0	+77	5°
10	Tmp	26	0.400	09:55:37	09:55:36	0	-0	5°
11	Tmp	28	5.500	10:03:34	10:03:30	0	-3	5°
12	Tmp	30	2.200	10:07:43	10:07:38	0	-6	5°
16	Tmp	36	0.340	10:21:44	10:21:43	0	-0	5°
17	Tmp	36	2.270	10:24:16	10:24:21	0	+2	5°
18	Tmp	39	0.310	10:34:50	10:34:50	0	+0	5°
19	Tmp	42	2.320	10:38:06	10:38:11	0	+2	4°
20	Tmp	46	2.340	10:45:42	10:45:42	0	+0	4°
21	Tmp	46	3.050	10:46:49	10:46:49	0	+0	4°
22	Tmp	47	5.930	10:50:35	10:50:35	0	+0	4°
23	Tmp	49	7.360	10:52:36	10:52:37	0	+0	4°
24	Tmp	51	8.250	10:54:17	10:54:39	0	+19	4°
25	Tmp	51	9.380	10:55:54	10:55:55	0	+0	4°
26	Tmp	54	6.500	11:03:42	11:03:43	0	+0	4°
27	Tmp	54	6.720	11:04:08	11:04:09	0	+0	4°

PC	Tp	Trc	KmPC	Ideal	Passagem	Pen	Pontos	Col
Num 39	A	4°	PG 18	B	5°	PG 16	Tot PG 34	Col. 6°



<b>Moto Clube / Princesa Off Road / Zaitec</b>	
.	

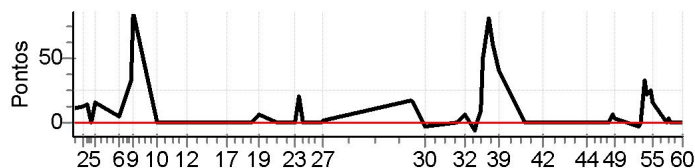
Etapa A	Num	39	Pen	0	PCZ	11	Total PP	212	PG	18
28	Tmp	58	2.230	11:40:28	11:40:27	0	-0	1°		
29	Tmp	59	2.880	11:42:05	11:42:22	0	+14	6°		
30	Tmp	60	5.550	11:46:24	11:46:21	0	-0	6°		
31	Tmp	64	2.520	12:00:18	12:00:19	0	+0	5°		
32	Tmp	65	4.770	12:03:24	12:03:35	0	+8	5°		
33	Tmp	67	6.830	12:07:06	12:07:26	0	+17	6°		
34	Tmp	69	7.380	12:08:22	12:08:45	0	+20	6°		
35	Tmp	69	7.920	12:09:43	12:10:24	0	+38	6°		
36	Tmp	69	8.290	12:10:39	12:12:03	0	+81	6°		
37	Tmp	69	9.150	12:12:48	12:15:25	0	+154	7°		
38	Tmp	71	1.200	12:15:12	12:17:27	0	+132	7°		
39	Tmp	71	2.230	12:16:55	12:18:48	0	+110	7°		
40	Tmp	76	5.100	12:28:28	12:28:27	0	-0	7°		
41	Tmp	76	7.200	12:31:12	12:31:13	0	+0	7°		
42	Tmp	77	3.910	12:35:51	12:35:50	0	-0	7°		
43	Tmp	80	0.310	12:50:20	12:50:19	0	-0	7°		
44	Tmp	81	3.010	12:53:31	12:53:31	0	+0	7°		
45	Tmp	84	5.450	12:58:24	12:58:24	0	+0	7°		
46	Tmp	85	8.060	13:01:36	13:01:33	0	-0	7°		
47	Tmp	87	1.100	13:02:59	13:02:58	0	-0	7°		
48	Tmp	87	2.250	13:04:54	13:04:59	0	+2	7°		
49	Tmp	88	2.760	13:05:45	13:06:15	0	+27	7°		
50	Tmp	92	1.520	13:15:33	13:15:29	0	-3	7°		
51	Tmp	93	1.980	13:16:24	13:16:27	0	+0	7°		
52	Tmp	94	2.730	13:18:01	13:18:42	0	+38	6°		
53	Tmp	95	3.140	13:18:36	13:19:09	0	+30	6°		
54	Tmp	95	3.830	13:19:59	13:20:31	0	+29	6°		
55	Tmp	97	4.650	13:21:14	13:21:40	0	+23	6°		
56	Tmp	100	0.650	13:26:58	13:26:57	0	-0	6°		
57	Tmp	101	1.030	13:27:34	13:27:39	0	+2	5°		
58	Tmp	101	1.800	13:28:32	13:28:33	0	+0	5°		
59	Tmp	101	3.670	13:30:52	13:30:54	0	+0	5°		
60	Tmp	102	6.100	13:33:30	13:33:31	0	+0	5°		

Etapa B	Num	39	Pen	0	PCZ	16	Total PP	728	PG	16
---------	-----	----	-----	---	-----	----	----------	-----	----	----

<b>N u m</b>	<b>70</b>	<b>Equipe</b>	70 / Luciano Magalhães (cowboy)						
		<b>Patrocinador</b>							
		<b>Cat / NL / Largada</b>	GRADUADOS / 9 / 09:04:00	<b>Cidade</b>	Alagoinhas				

PC	Tp	Trc	KmPC	Ideal	Passagem	Pen	Pontos	Col
1	Tmp	4	0.420	09:21:23	09:21:37	0	+11	5°
2	Tmp	5	3.520	09:25:16	09:25:31	0	+12	5°
3	Tmp	9	0.900	09:26:53	09:27:10	0	+14	4°
4	Tmp	11	1.950	09:28:30	09:28:30	0	+0	4°
5	Tmp	14	3.060	09:30:39	09:30:57	0	+15	4°
6	Tmp	18	1.990	09:40:26	09:40:34	0	+5	4°
8	Tmp	23	4.500	09:45:21	09:45:56	0	+32	3°
9	Tmp	23	4.900	09:46:16	09:47:44	0	+85	4°
10	Tmp	26	0.400	09:56:07	09:56:06	0	-0	4°
11	Tmp	28	5.500	10:04:04	10:04:05	0	+0	3°
12	Tmp	30	2.200	10:08:13	10:08:14	0	+0	3°
16	Tmp	36	0.340	10:22:14	10:22:14	0	+0	3°
17	Tmp	36	2.270	10:24:46	10:24:49	0	+0	3°
18	Tmp	39	0.310	10:35:20	10:35:22	0	+0	3°
19	Tmp	42	2.320	10:38:36	10:38:45	0	+6	3°
20	Tmp	46	2.340	10:46:12	10:46:12	0	+0	3°
21	Tmp	46	3.050	10:47:19	10:47:19	0	+0	3°
22	Tmp	47	5.930	10:51:05	10:51:07	0	+0	3°
23	Tmp	49	7.360	10:53:06	10:53:09	0	+0	3°
24	Tmp	51	8.250	10:54:47	10:55:10	0	+20	3°
25	Tmp	51	9.380	10:56:24	10:56:22	0	-0	3°
26	Tmp	54	6.500	11:04:12	11:04:13	0	+0	3°
27	Tmp	54	6.720	11:04:38	11:04:42	0	+1	3°

PC	Tp	Trc	KmPC	Ideal	Passagem	Pen	Pontos	Col
Num 70	A	3°	PG 20	B	2°	PG 22	Tot PG 42	Col. 2°



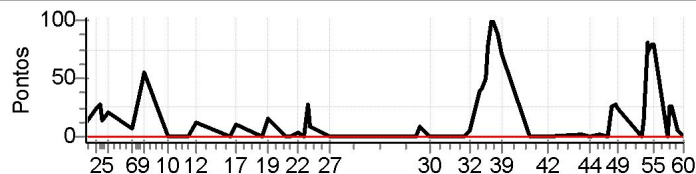
<b>Moto Clube / Princesa Off Road / Zaitec</b>	
.	

Etapa A	Num	70	Pen	0	PCZ	13	Total PP	201	PG	20
28	Tmp	58	2.230	11:40:58	11:41:18	0	+17	8°		
29	Tmp	59	2.880	11:42:35	11:42:54	0	+16	8°		
30	Tmp	60	5.550	11:46:54	11:46:50	0	-3	8°		
31	Tmp	64	2.520	12:00:48	12:00:47	0	-0	8°		
32	Tmp	65	4.770	12:03:54	12:04:03	0	+6	8°		
33	Tmp	67	6.830	12:07:36	12:07:31	0	-6	7°		
34	Tmp	69	7.380	12:08:52	12:08:53	0	+0	5°		
35	Tmp	69	7.920	12:10:13	12:10:26	0	+10	5°		
36	Tmp	69	8.290	12:11:09	12:12:02	0	+50	5°		
37	Tmp	69	9.150	12:13:18	12:14:42	0	+81	4°		
38	Tmp	71	1.200	12:15:42	12:16:45	0	+60	4°		
39	Tmp	71	2.230	12:17:25	12:18:09	0	+41	4°		
40	Tmp	76	5.100	12:28:58	12:28:58	0	+0	4°		
41	Tmp	76	7.200	12:31:42	12:31:43	0	+0	4°		
42	Tmp	77	3.910	12:36:21	12:36:21	0	+0	4°		
43	Tmp	80	0.310	12:50:50	12:50:51	0	+0	4°		
44	Tmp	81	3.010	12:54:01	12:54:00	0	-0	4°		
45	Tmp	84	5.450	12:58:54	12:58:54	0	+0	4°		
46	Tmp	85	8.060	13:02:06	13:02:03	0	-0	4°		
47	Tmp	87	1.100	13:03:29	13:03:29	0	+0	4°		
48	Tmp	87	2.250	13:05:24	13:05:34	0	+7	4°		
49	Tmp	88	2.760	13:06:15	13:06:21	0	+3	4°		
50	Tmp	92	1.520	13:16:03	13:15:59	0	-3	4°		
51	Tmp	93	1.980	13:16:54	13:16:54	0	+0	4°		
52	Tmp	94	2.730	13:18:31	13:19:07	0	+33	2°		
53	Tmp	95	3.140	13:19:06	13:19:31	0	+22	2°		
54	Tmp	95	3.830	13:20:29	13:20:57	0	+25	2°		
55	Tmp	97	4.650	13:21:44	13:22:03	0	+16	2°		
56	Tmp	100	0.650	13:27:28	13:27:25	0	-0	2°		
57	Tmp	101	1.030	13:28:04	13:28:11	0	+4	2°		
58	Tmp	101	1.800	13:29:02	13:29:04	0	+0	2°		
59	Tmp	101	3.670	13:31:22	13:31:21	0	-0	2°		
60	Tmp	102	6.100	13:34:00	13:33:58	0	-0	2°		
Etapa B	Num	70	Pen	0	PCZ	15	Total PP	403	PG	22

<b>N u m</b>	<b>71</b>	<b>Equipe</b>	71 / Paulo Roberto (bituca)						
		<b>Patrocinador</b>							
		<b>Cat / NL / Largada</b>	GRADUADOS / 3 / 09:01:00	<b>Cidade</b>	Feira				

PC	Tp	Trc	KmPC	Ideal	Passagem	Pen	Pontos	Col
1	Tmp	4	0.420	09:18:23	09:18:38	0	+12	6°
2	Tmp	5	3.520	09:22:16	09:22:43	0	+24	7°
3	Tmp	9	0.900	09:23:53	09:24:23	0	+27	7°
4	Tmp	11	1.950	09:25:30	09:25:46	0	+13	7°
5	Tmp	14	3.060	09:27:39	09:28:03	0	+21	6°
6	Tmp	18	1.990	09:37:26	09:37:36	0	+7	6°
8	Tmp	23	4.500	09:42:21	09:43:10	0	+46	6°
9	Tmp	23	4.900	09:43:16	09:44:15	0	+56	6°
10	Tmp	26	0.400	09:53:07	09:53:09	0	+0	6°
11	Tmp	28	5.500	10:01:04	10:01:03	0	-0	6°
12	Tmp	30	2.200	10:05:13	10:05:28	0	+12	6°
16	Tmp	36	0.340	10:19:14	10:19:17	0	+0	6°
17	Tmp	36	2.270	10:21:46	10:22:00	0	+11	6°
18	Tmp	39	0.310	10:32:20	10:32:22	0	+0	6°
19	Tmp	42	2.320	10:35:36	10:35:55	0	+16	6°
20	Tmp	46	2.340	10:43:12	10:43:15	0	+0	6°
21	Tmp	46	3.050	10:44:19	10:44:21	0	+0	6°
22	Tmp	47	5.930	10:48:05	10:48:11	0	+3	6°
23	Tmp	49	7.360	10:50:06	10:50:09	0	+0	6°
24	Tmp	51	8.250	10:51:47	10:52:17	0	+27	6°
25	Tmp	51	9.380	10:53:24	10:53:35	0	+8	6°
26	Tmp	54	6.500	11:01:12	11:01:15	0	+0	6°
27	Tmp	54	6.720	11:01:38	11:01:41	0	+0	6°

PC	Tp	Trc	KmPC	Ideal	Passagem	Pen	Pontos	Col
Num 71	A	6°	PG 15	B	7°	PG 14	Tot PG 29	Col. 7°



<b>Moto Clube / Princesa Off Road / Zaitec</b>	
.	

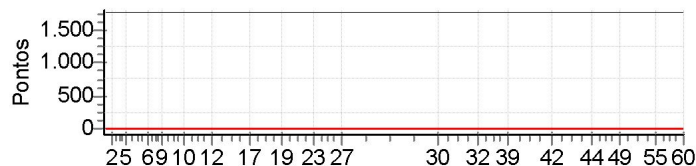
Etapa A	Num	71	Pen	0	PCZ	9	Total PP	283	PG	15
28	Tmp	58	2.230	11:37:58	11:37:59	0	+0	5°		
29	Tmp	59	2.880	11:39:35	11:39:47	0	+9	5°		
30	Tmp	60	5.550	11:43:54	11:43:57	0	+0	5°		
31	Tmp	64	2.520	11:57:48	11:57:50	0	+0	4°		
32	Tmp	65	4.770	12:00:54	12:01:02	0	+5	4°		
33	Tmp	67	6.830	12:04:36	12:05:18	0	+39	8°		
34	Tmp	69	7.380	12:05:52	12:06:37	0	+42	8°		
35	Tmp	69	7.920	12:07:13	12:08:07	0	+51	7°		
36	Tmp	69	8.290	12:08:09	12:09:30	0	+78	7°		
37	Tmp	69	9.150	12:10:18	12:12:03	0	+102	6°		
38	Tmp	71	1.200	12:12:42	12:14:13	0	+88	6°		
39	Tmp	71	2.230	12:14:25	12:15:39	0	+71	6°		
40	Tmp	76	5.100	12:25:58	12:25:59	0	+0	6°		
41	Tmp	76	7.200	12:28:42	12:28:42	0	+0	6°		
42	Tmp	77	3.910	12:33:21	12:33:22	0	+0	6°		
43	Tmp	80	0.310	12:47:50	12:47:54	0	+1	6°		
44	Tmp	81	3.010	12:51:01	12:51:04	0	+0	6°		
45	Tmp	84	5.450	12:55:54	12:55:58	0	+1	6°		
46	Tmp	85	8.060	12:59:06	12:59:07	0	+0	6°		
47	Tmp	87	1.100	13:00:29	13:00:58	0	+26	6°		
48	Tmp	87	2.250	13:02:24	13:02:54	0	+27	6°		
49	Tmp	88	2.760	13:03:15	13:03:43	0	+25	6°		
50	Tmp	92	1.520	13:13:03	13:13:04	0	+0	6°		
51	Tmp	93	1.980	13:13:54	13:14:10	0	+13	6°		
52	Tmp	94	2.730	13:15:31	13:16:56	0	+82	7°		
53	Tmp	95	3.140	13:16:06	13:17:22	0	+73	7°		
54	Tmp	95	3.830	13:17:29	13:18:52	0	+80	7°		
55	Tmp	97	4.650	13:18:44	13:20:07	0	+80	7°		
56	Tmp	100	0.650	13:24:28	13:24:28	0	+0	7°		
57	Tmp	101	1.030	13:25:04	13:25:33	0	+26	7°		
58	Tmp	101	1.800	13:26:02	13:26:31	0	+26	7°		
59	Tmp	101	3.670	13:28:22	13:28:31	0	+6	7°		
60	Tmp	102	6.100	13:31:00	13:31:03	0	+0	7°		

Etapa B	Num	71	Pen	0	PCZ	11	Total PP	951	PG	14
---------	-----	----	-----	---	-----	----	----------	-----	----	----

<b>N u m</b>	<b>74</b>	<b>Equipe</b>	74 / Gerson Nunes (chokito)						
		<b>Patrocinador</b>							
		<b>Cat / NL / Largada</b>	GRADUADOS / 5 / 09:02:00	<b>Cidade</b>	Ssa				

PC	Tp	Trc	KmPC	Ideal	Passagem	Pen	Pontos	Col
1	Tmp	4	0.420	09:19:23		0	+1800	9°
2	Tmp	5	3.520	09:23:16		0	+1800	9°
3	Tmp	9	0.900	09:24:53		0	+1800	9°
4	Tmp	11	1.950	09:26:30		0	+1800	9°
5	Tmp	14	3.060	09:28:39		0	+1800	9°
6	Tmp	18	1.990	09:38:26		0	+1800	9°
8	Tmp	23	4.500	09:43:21		0	+1800	9°
9	Tmp	23	4.900	09:44:16		0	+1800	9°
10	Tmp	26	0.400	09:54:07		0	+1800	9°
11	Tmp	28	5.500	10:02:04		0	+1800	9°
12	Tmp	30	2.200	10:06:13		0	+1800	9°
16	Tmp	36	0.340	10:20:14		0	+1800	9°
17	Tmp	36	2.270	10:22:46		0	+1800	9°
18	Tmp	39	0.310	10:33:20		0	+1800	9°
19	Tmp	42	2.320	10:36:36		0	+1800	9°
20	Tmp	46	2.340	10:44:12		0	+1800	9°
21	Tmp	46	3.050	10:45:19		0	+1800	9°
22	Tmp	47	5.930	10:49:05		0	+1800	9°
23	Tmp	49	7.360	10:51:06		0	+1800	9°
24	Tmp	51	8.250	10:52:47		0	+1800	9°
25	Tmp	51	9.380	10:54:24		0	+1800	9°
26	Tmp	54	6.500	11:02:12		0	+1800	9°
27	Tmp	54	6.720	11:02:38		0	+1800	9°

PC	Tp	Trc	KmPC	Ideal	Passagem	Pen	Pontos	Col					
Num	74	A	NC	PG	0	B	NC	PG	0	Tot PG	0	Col.	9°



<b>Moto Clube / Princesa Off Road / Zaitec</b>											
.											

<b>Etapa A</b>	Num	74	Pen	0	PCZ	0	Total PP	41400	PG	0
----------------	-----	----	-----	---	-----	---	----------	-------	----	---

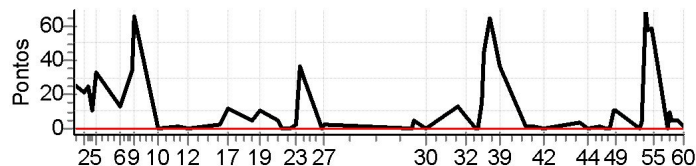
28	Tmp	58	2.230	11:38:58		0	+1800	9°
29	Tmp	59	2.880	11:40:35		0	+1800	9°
30	Tmp	60	5.550	11:44:54		0	+1800	9°
31	Tmp	64	2.520	11:58:48		0	+1800	9°
32	Tmp	65	4.770	12:01:54		0	+1800	9°
33	Tmp	67	6.830	12:05:36		0	+1800	9°
34	Tmp	69	7.380	12:06:52		0	+1800	9°
35	Tmp	69	7.920	12:08:13		0	+1800	9°
36	Tmp	69	8.290	12:09:09		0	+1800	9°
37	Tmp	69	9.150	12:11:18		0	+1800	9°
38	Tmp	71	1.200	12:13:42		0	+1800	9°
39	Tmp	71	2.230	12:15:25		0	+1800	9°
40	Tmp	76	5.100	12:26:58		0	+1800	9°
41	Tmp	76	7.200	12:29:42		0	+1800	9°
42	Tmp	77	3.910	12:34:21		0	+1800	9°
43	Tmp	80	0.310	12:48:50		0	+1800	9°
44	Tmp	81	3.010	12:52:01		0	+1800	9°
45	Tmp	84	5.450	12:56:54		0	+1800	9°
46	Tmp	85	8.060	13:00:06		0	+1800	9°
47	Tmp	87	1.100	13:01:29		0	+1800	9°
48	Tmp	87	2.250	13:03:24		0	+1800	9°
49	Tmp	88	2.760	13:04:15		0	+1800	9°
50	Tmp	92	1.520	13:14:03		0	+1800	9°
51	Tmp	93	1.980	13:14:54		0	+1800	9°
52	Tmp	94	2.730	13:16:31		0	+1800	9°
53	Tmp	95	3.140	13:17:06		0	+1800	9°
54	Tmp	95	3.830	13:18:29		0	+1800	9°
55	Tmp	97	4.650	13:19:44		0	+1800	9°
56	Tmp	100	0.650	13:25:28		0	+1800	9°
57	Tmp	101	1.030	13:26:04		0	+1800	9°
58	Tmp	101	1.800	13:27:02		0	+1800	9°
59	Tmp	101	3.670	13:29:22		0	+1800	9°
60	Tmp	102	6.100	13:32:00		0	+1800	9°

<b>Etapa B</b>	Num	74	Pen	0	PCZ	0	Total PP	59400	PG	0
----------------	-----	----	-----	---	-----	---	----------	-------	----	---

N u m	131	Equipe	131 / Edilton (muqueca)						
		Patrocinador							
		Cat / NL / Largada	GRADUADOS / 7 / 09:03:00	Cidade	St Antonio				

PC	Tp	Trc	KmPC	Ideal	Passagem	Pen	Pontos	Col
1	Tmp	4	0.420	09:20:23	09:20:52	0	+26	8°
2	Tmp	5	3.520	09:24:16	09:24:40	0	+21	8°
3	Tmp	9	0.900	09:25:53	09:26:21	0	+25	8°
4	Tmp	11	1.950	09:27:30	09:27:44	0	+11	8°
5	Tmp	14	3.060	09:29:39	09:30:15	0	+33	7°
6	Tmp	18	1.990	09:39:26	09:39:42	0	+13	7°
8	Tmp	23	4.500	09:44:21	09:44:58	0	+34	7°
9	Tmp	23	4.900	09:45:16	09:46:24	0	+65	7°
10	Tmp	26	0.400	09:55:07	09:55:10	0	+0	7°
11	Tmp	28	5.500	10:03:04	10:03:08	0	+1	7°
12	Tmp	30	2.200	10:07:13	10:07:11	0	-0	7°
16	Tmp	36	0.340	10:21:14	10:21:19	0	+2	7°
17	Tmp	36	2.270	10:23:46	10:24:01	0	+12	7°
18	Tmp	39	0.310	10:34:20	10:34:28	0	+5	7°
19	Tmp	42	2.320	10:37:36	10:37:49	0	+10	7°
20	Tmp	46	2.340	10:45:12	10:45:20	0	+5	7°
21	Tmp	46	3.050	10:46:19	10:46:22	0	+0	7°
22	Tmp	47	5.930	10:50:05	10:50:08	0	+0	7°
23	Tmp	49	7.360	10:52:06	10:52:11	0	+2	7°
24	Tmp	51	8.250	10:53:47	10:54:26	0	+36	7°
25	Tmp	51	9.380	10:55:24	10:55:56	0	+29	7°
26	Tmp	54	6.500	11:03:12	11:03:15	0	+0	7°
27	Tmp	54	6.720	11:03:38	11:03:43	0	+2	7°

PC	Tp	Trc	KmPC	Ideal	Passagem	Pen	Pontos	Col
Num 131	A	7°	PG 14	B	3°	PG 20	Tot PG 34	Col. 5°



Moto Clube / Princesa Off Road / Zaitec

Etapa A	Num	131	Pen	0	PCZ	5	Total PP	332	PG	14
28	Tmp	58	2.230	11:39:58	11:40:01	0	+0	2°		
29	Tmp	59	2.880	11:41:35	11:41:43	0	+5	3°		
30	Tmp	60	5.550	11:45:54	11:45:56	0	+0	3°		
31	Tmp	64	2.520	11:59:48	12:00:04	0	+13	6°		
32	Tmp	65	4.770	12:02:54	12:03:04	0	+7	6°		
33	Tmp	67	6.830	12:06:36	12:06:37	0	+0	4°		
34	Tmp	69	7.380	12:07:52	12:07:54	0	+0	4°		
35	Tmp	69	7.920	12:09:13	12:09:31	0	+15	3°		
36	Tmp	69	8.290	12:10:09	12:10:57	0	+45	3°		
37	Tmp	69	9.150	12:12:18	12:13:25	0	+64	2°		
38	Tmp	71	1.200	12:14:42	12:15:39	0	+54	2°		
39	Tmp	71	2.230	12:16:25	12:17:04	0	+36	2°		
40	Tmp	76	5.100	12:27:58	12:28:02	0	+1	2°		
41	Tmp	76	7.200	12:30:42	12:30:46	0	+1	2°		
42	Tmp	77	3.910	12:35:21	12:35:21	0	+0	2°		
43	Tmp	80	0.310	12:49:50	12:49:57	0	+4	2°		
44	Tmp	81	3.010	12:53:01	12:53:03	0	+0	2°		
45	Tmp	84	5.450	12:57:54	12:57:58	0	+1	2°		
46	Tmp	85	8.060	13:01:06	13:01:07	0	+0	2°		
47	Tmp	87	1.100	13:02:29	13:02:31	0	+0	2°		
48	Tmp	87	2.250	13:04:24	13:04:37	0	+10	2°		
49	Tmp	88	2.760	13:05:15	13:05:28	0	+10	2°		
50	Tmp	92	1.520	13:15:03	13:15:03	0	+0	2°		
51	Tmp	93	1.980	13:15:54	13:16:00	0	+3	2°		
52	Tmp	94	2.730	13:17:31	13:18:43	0	+69	3°		
53	Tmp	95	3.140	13:18:06	13:19:06	0	+57	3°		
54	Tmp	95	3.830	13:19:29	13:20:30	0	+58	3°		
55	Tmp	97	4.650	13:20:44	13:21:38	0	+51	3°		
56	Tmp	100	0.650	13:26:28	13:26:30	0	+0	3°		
57	Tmp	101	1.030	13:27:04	13:27:16	0	+9	3°		
58	Tmp	101	1.800	13:28:02	13:28:10	0	+5	3°		
59	Tmp	101	3.670	13:30:22	13:30:30	0	+5	3°		
60	Tmp	102	6.100	13:33:00	13:33:04	0	+1	3°		

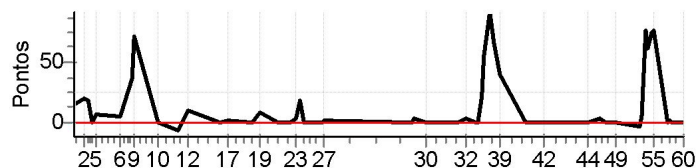
Etapa B	Num	131	Pen	0	PCZ	10	Total PP	524	PG	20
---------	-----	-----	-----	---	-----	----	----------	-----	----	----



<b>N u m</b>	<b>316</b>	<b>Equipe</b>	316 / Almir Aristides (chupetão)					
		<b>Patrocinador</b>						
		<b>Cat / NL / Largada</b>	GRADUADOS / 2 / 09:00:30			<b>Cidade</b>	Petrolina	

PC	Tp	Trc	KmPC	Ideal	Passagem	Pen	Pontos	Col
1	Tmp	4	0.420	09:17:53	09:18:11	0	+15	7°
2	Tmp	5	3.520	09:21:46	09:22:09	0	+20	6°
3	Tmp	9	0.900	09:23:23	09:23:44	0	+18	6°
4	Tmp	11	1.950	09:25:00	09:25:02	0	+0	6°
5	Tmp	14	3.060	09:27:09	09:27:19	0	+7	5°
6	Tmp	18	1.990	09:36:56	09:37:04	0	+5	5°
8	Tmp	23	4.500	09:41:51	09:42:30	0	+36	4°
9	Tmp	23	4.900	09:42:46	09:43:59	0	+70	3°
10	Tmp	26	0.400	09:52:37	09:52:34	0	-0	3°
11	Tmp	28	5.500	10:00:34	10:00:29	0	-6	4°
12	Tmp	30	2.200	10:04:43	10:04:56	0	+10	4°
16	Tmp	36	0.340	10:18:44	10:18:42	0	-0	4°
17	Tmp	36	2.270	10:21:16	10:21:21	0	+2	4°
18	Tmp	39	0.310	10:31:50	10:31:49	0	-0	4°
19	Tmp	42	2.320	10:35:06	10:35:18	0	+9	5°
20	Tmp	46	2.340	10:42:42	10:42:44	0	+0	5°
21	Tmp	46	3.050	10:43:49	10:43:47	0	-0	5°
22	Tmp	47	5.930	10:47:35	10:47:34	0	-0	5°
23	Tmp	49	7.360	10:49:36	10:49:42	0	+3	5°
24	Tmp	51	8.250	10:51:17	10:51:39	0	+19	5°
25	Tmp	51	9.380	10:52:54	10:52:51	0	-0	5°
26	Tmp	54	6.500	11:00:42	11:00:44	0	+0	5°
27	Tmp	54	6.720	11:01:08	11:01:13	0	+2	5°

PC	Tp	Trc	KmPC	Ideal	Passagem	Pen	Pontos	Col					
Num	316	A	5°	PG	16	B	4°	PG	18	Tot PG	34	Col.	4°



<b>Moto Clube / Princesa Off Road / Zaitec</b>									
.									

Etapa A	Num	316	Pen	0	PCZ	9	Total PP	222	PG	16
28	Tmp	58	2.230	11:37:28	11:37:28	0	+0	6°		
29	Tmp	59	2.880	11:39:05	11:39:12	0	+4	2°		
30	Tmp	60	5.550	11:43:24	11:43:23	0	-0	2°		
31	Tmp	64	2.520	11:57:18	11:57:20	0	+0	2°		
32	Tmp	65	4.770	12:00:24	12:00:30	0	+3	3°		
33	Tmp	67	6.830	12:04:06	12:04:04	0	-0	2°		
34	Tmp	69	7.380	12:05:22	12:05:25	0	+0	2°		
35	Tmp	69	7.920	12:06:43	12:07:07	0	+21	2°		
36	Tmp	69	8.290	12:07:39	12:08:37	0	+55	2°		
37	Tmp	69	9.150	12:09:48	12:11:21	0	+90	3°		
38	Tmp	71	1.200	12:12:12	12:13:20	0	+65	3°		
39	Tmp	71	2.230	12:13:55	12:14:38	0	+40	3°		
40	Tmp	76	5.100	12:25:28	12:25:28	0	+0	3°		
41	Tmp	76	7.200	12:28:12	12:28:14	0	+0	3°		
42	Tmp	77	3.910	12:32:51	12:32:52	0	+0	3°		
43	Tmp	80	0.310	12:47:20	12:47:24	0	+1	3°		
44	Tmp	81	3.010	12:50:31	12:50:34	0	+0	3°		
45	Tmp	84	5.450	12:55:24	12:55:31	0	+4	3°		
46	Tmp	85	8.060	12:58:36	12:58:33	0	-0	3°		
47	Tmp	87	1.100	12:59:59	12:59:58	0	-0	3°		
48	Tmp	87	2.250	13:01:54	13:01:58	0	+1	3°		
49	Tmp	88	2.760	13:02:45	13:02:46	0	+0	3°		
50	Tmp	92	1.520	13:12:33	13:12:29	0	-3	3°		
51	Tmp	93	1.980	13:13:24	13:13:33	0	+6	3°		
52	Tmp	94	2.730	13:15:01	13:16:20	0	+76	4°		
53	Tmp	95	3.140	13:15:36	13:16:40	0	+61	4°		
54	Tmp	95	3.830	13:16:59	13:18:16	0	+74	4°		
55	Tmp	97	4.650	13:18:14	13:19:32	0	+75	4°		
56	Tmp	100	0.650	13:23:58	13:23:55	0	-0	4°		
57	Tmp	101	1.030	13:24:34	13:24:39	0	+2	4°		
58	Tmp	101	1.800	13:25:32	13:25:34	0	+0	4°		
59	Tmp	101	3.670	13:27:52	13:27:55	0	+0	4°		
60	Tmp	102	6.100	13:30:30	13:30:32	0	+0	4°		
Etapa B	Num	316	Pen	0	PCZ	16	Total PP	581	PG	18