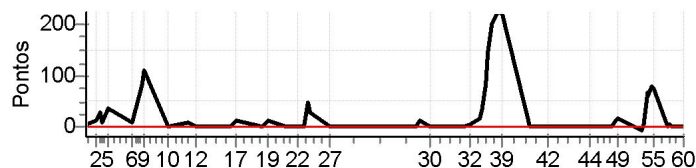


N u m	15	Equipe	15 / Almir Dantas (bobinho)						
		Patrocinador							
		Cat / NL / Largada	EXECUTIVO / 16 / 09:07:30			Cidade	Feira		

PC	Tp	Trc	KmPC	Ideal	Passagem	Pen	Pontos	Col
1	Tmp	4	0.420	09:24:53	09:25:02	0	+6	1°
2	Tmp	5	3.520	09:28:46	09:29:02	0	+13	1°
3	Tmp	9	0.900	09:30:23	09:30:54	0	+28	1°
4	Tmp	11	1.950	09:32:00	09:32:14	0	+11	1°
5	Tmp	14	3.060	09:34:09	09:34:48	0	+36	1°
6	Tmp	18	1.990	09:43:56	09:44:07	0	+8	1°
8	Tmp	23	4.500	09:48:51	09:50:17	0	+83	1°
9	Tmp	23	4.900	09:49:46	09:51:38	0	+109	2°
10	Tmp	26	0.400	09:59:37	09:59:36	0	-0	2°
11	Tmp	28	5.500	10:07:34	10:07:45	0	+8	2°
12	Tmp	30	2.200	10:11:43	10:11:42	0	-0	2°
16	Tmp	36	0.340	10:25:44	10:25:47	0	+0	2°
17	Tmp	36	2.270	10:28:16	10:28:33	0	+14	2°
18	Tmp	39	0.310	10:38:50	10:38:54	0	+1	2°
19	Tmp	42	2.320	10:42:06	10:42:24	0	+15	2°
20	Tmp	46	2.340	10:49:42	10:49:39	0	-0	2°
21	Tmp	46	3.050	10:50:49	10:50:48	0	-0	2°
22	Tmp	47	5.930	10:54:35	10:54:36	0	+0	2°
23	Tmp	49	7.360	10:56:36	10:56:39	0	+0	2°
24	Tmp	51	8.250	10:58:17	10:59:09	0	+49	2°
25	Tmp	51	9.380	10:59:54	11:00:27	0	+30	2°
26	Tmp	54	6.500	11:07:42	11:07:43	0	+0	2°
27	Tmp	54	6.720	11:08:08	11:08:09	0	+0	2°

PC	Tp	Trc	KmPC	Ideal	Passagem	Pen	Pontos	Col
Num 15	A	2°	PG 22	B	2°	PG 22	Tot PG 44	Col. 2°



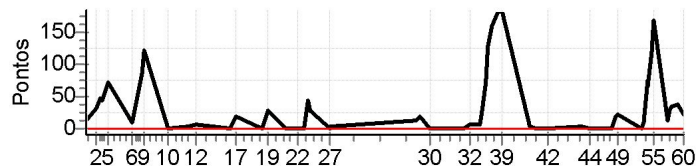
Moto Clube / Princesa Off Road / Zaitec	
.	

Etapa A	Num	15	Pen	0	PCZ	9	Total PP	411	PG	22
28	Tmp	58	2.230	11:44:28	11:44:27	0	-0	5°		
29	Tmp	59	2.880	11:46:05	11:46:21	0	+13	2°		
30	Tmp	60	5.550	11:50:24	11:50:22	0	-0	2°		
31	Tmp	64	2.520	12:04:18	12:04:17	0	-0	2°		
32	Tmp	65	4.770	12:07:24	12:07:31	0	+4	2°		
33	Tmp	67	6.830	12:11:06	12:11:27	0	+18	2°		
34	Tmp	69	7.380	12:12:22	12:12:57	0	+32	3°		
35	Tmp	69	7.920	12:13:43	12:15:10	0	+84	5°		
36	Tmp	69	8.290	12:14:39	12:17:06	0	+144	5°		
37	Tmp	69	9.150	12:16:48	12:20:12	0	+201	3°		
38	Tmp	71	1.200	12:19:12	12:22:58	0	+223	3°		
39	Tmp	71	2.230	12:20:55	12:24:40	0	+222	4°		
40	Tmp	76	5.100	12:32:28	12:32:33	0	+2	4°		
41	Tmp	76	7.200	12:35:12	12:35:11	0	-0	4°		
42	Tmp	77	3.910	12:39:51	12:39:53	0	+0	4°		
43	Tmp	80	0.310	12:54:20	12:54:22	0	+0	4°		
44	Tmp	81	3.010	12:57:31	12:57:29	0	-0	4°		
45	Tmp	84	5.450	13:02:24	13:02:25	0	+0	4°		
46	Tmp	85	8.060	13:05:36	13:05:33	0	-0	4°		
47	Tmp	87	1.100	13:06:59	13:06:56	0	-0	4°		
48	Tmp	87	2.250	13:08:54	13:09:09	0	+12	4°		
49	Tmp	88	2.760	13:09:45	13:10:04	0	+16	4°		
50	Tmp	92	1.520	13:19:33	13:19:28	0	-6	4°		
51	Tmp	93	1.980	13:20:24	13:20:34	0	+7	4°		
52	Tmp	94	2.730	13:22:01	13:23:12	0	+68	3°		
53	Tmp	95	3.140	13:22:36	13:23:39	0	+60	3°		
54	Tmp	95	3.830	13:23:59	13:25:22	0	+80	4°		
55	Tmp	97	4.650	13:25:14	13:26:31	0	+74	3°		
56	Tmp	100	0.650	13:30:58	13:30:56	0	-0	2°		
57	Tmp	101	1.030	13:31:34	13:31:41	0	+4	2°		
58	Tmp	101	1.800	13:32:32	13:32:37	0	+2	2°		
59	Tmp	101	3.670	13:34:52	13:34:52	0	+0	2°		
60	Tmp	102	6.100	13:37:30	13:37:27	0	-0	2°		
Etapa B	Num	15	Pen	0	PCZ	13	Total PP	1272	PG	22

N u m	34	Equipe	34 / Rogerio Leite (chimbinha)						
		Patrocinador							
		Cat / NL / Largada	EXECUTIVO / 19 / 09:09:00	Cidade	Ssa				

PC	Tp	Trc	KmPC	Ideal	Passagem	Pen	Pontos	Col
1	Tmp	4	0.420	09:26:23	09:26:39	0	+13	6°
2	Tmp	5	3.520	09:30:16	09:30:50	0	+31	5°
3	Tmp	9	0.900	09:31:53	09:32:42	0	+46	5°
4	Tmp	11	1.950	09:33:30	09:34:15	0	+42	5°
5	Tmp	14	3.060	09:35:39	09:36:52	0	+70	5°
6	Tmp	18	1.990	09:45:26	09:45:39	0	+10	5°
8	Tmp	23	4.500	09:50:21	09:51:51	0	+87	3°
9	Tmp	23	4.900	09:51:16	09:53:20	0	+121	3°
10	Tmp	26	0.400	10:01:07	10:01:05	0	-0	3°
11	Tmp	28	5.500	10:09:04	10:09:09	0	+2	3°
12	Tmp	30	2.200	10:13:13	10:13:21	0	+5	3°
16	Tmp	36	0.340	10:27:14	10:27:18	0	+1	3°
17	Tmp	36	2.270	10:29:46	10:30:08	0	+19	3°
18	Tmp	39	0.310	10:40:20	10:40:23	0	+0	3°
19	Tmp	42	2.320	10:43:36	10:44:06	0	+27	3°
20	Tmp	46	2.340	10:51:12	10:51:11	0	-0	3°
21	Tmp	46	3.050	10:52:19	10:52:19	0	+0	3°
22	Tmp	47	5.930	10:56:05	10:56:07	0	+0	3°
23	Tmp	49	7.360	10:58:06	10:58:10	0	+1	3°
24	Tmp	51	8.250	10:59:47	11:00:34	0	+44	3°
25	Tmp	51	9.380	11:01:24	11:01:56	0	+29	3°
26	Tmp	54	6.500	11:09:12	11:09:15	0	+0	3°
27	Tmp	54	6.720	11:09:38	11:09:43	0	+2	3°

PC	Tp	Trc	KmPC	Ideal	Passagem	Pen	Pontos	Col
Num 34	A	3°	PG 20	B	3°	PG 20	Tot PG 40	Col. 3°



Moto Clube / Princesa Off Road / Zaitec	
.	

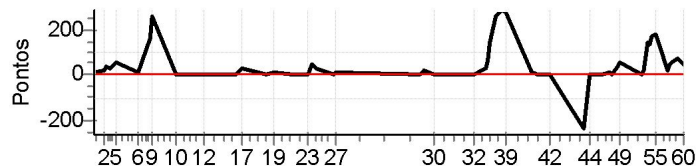
Etapa A	Num	34	Pen	0	PCZ	6	Total PP	550	PG	20
28	Tmp	58	2.230	11:45:58	11:46:13	0	+12	6°		
29	Tmp	59	2.880	11:47:35	11:47:57	0	+19	6°		
30	Tmp	60	5.550	11:51:54	11:51:53	0	-0	5°		
31	Tmp	64	2.520	12:05:48	12:05:51	0	+0	4°		
32	Tmp	65	4.770	12:08:54	12:09:02	0	+5	4°		
33	Tmp	67	6.830	12:12:36	12:12:45	0	+6	3°		
34	Tmp	69	7.380	12:13:52	12:14:19	0	+24	2°		
35	Tmp	69	7.920	12:15:13	12:16:26	0	+70	3°		
36	Tmp	69	8.290	12:16:09	12:18:18	0	+126	2°		
37	Tmp	69	9.150	12:18:18	12:20:59	0	+158	2°		
38	Tmp	71	1.200	12:20:42	12:23:45	0	+180	2°		
39	Tmp	71	2.230	12:22:25	12:25:31	0	+183	2°		
40	Tmp	76	5.100	12:33:58	12:34:03	0	+2	2°		
41	Tmp	76	7.200	12:36:42	12:36:45	0	+0	2°		
42	Tmp	77	3.910	12:41:21	12:41:20	0	-0	2°		
43	Tmp	80	0.310	12:55:50	12:55:55	0	+2	2°		
44	Tmp	81	3.010	12:59:01	12:59:02	0	+0	2°		
45	Tmp	84	5.450	13:03:54	13:03:55	0	+0	2°		
46	Tmp	85	8.060	13:07:06	13:07:08	0	+0	2°		
47	Tmp	87	1.100	13:08:29	13:08:29	0	+0	2°		
48	Tmp	87	2.250	13:10:24	13:10:45	0	+18	2°		
49	Tmp	88	2.760	13:11:15	13:11:41	0	+23	2°		
50	Tmp	92	1.520	13:21:03	13:21:02	0	-0	2°		
51	Tmp	93	1.980	13:21:54	13:22:07	0	+10	2°		
52	Tmp	94	2.730	13:23:31	13:24:48	0	+74	2°		
53	Tmp	95	3.140	13:24:06	13:25:14	0	+65	2°		
54	Tmp	95	3.830	13:25:29	13:27:31	0	+119	2°		
55	Tmp	97	4.650	13:26:44	13:29:33	0	+166	2°		
56	Tmp	100	0.650	13:32:28	13:32:44	0	+13	3°		
57	Tmp	101	1.030	13:33:04	13:33:36	0	+29	3°		
58	Tmp	101	1.800	13:34:02	13:34:40	0	+35	3°		
59	Tmp	101	3.670	13:36:22	13:37:02	0	+37	3°		
60	Tmp	102	6.100	13:39:00	13:39:26	0	+23	3°		

Etapa B	Num	34	Pen	0	PCZ	9	Total PP	1399	PG	20
---------	-----	----	-----	---	-----	---	----------	------	----	----

N u m	44	Equipe	44 / Mauro Teixeira (batata)						
		Patrocinador							
		Cat / NL / Largada	EXECUTIVO / 20 / 09:09:30	Cidade	Cruz Almas				

PC	Tp	Trc	KmPC	Ideal	Passagem	Pen	Pontos	Col
1	Tmp	4	0.420	09:26:53	09:27:08	0	+12	4°
2	Tmp	5	3.520	09:30:46	09:31:13	0	+24	4°
3	Tmp	9	0.900	09:32:23	09:33:06	0	+40	4°
4	Tmp	11	1.950	09:34:00	09:34:32	0	+29	4°
5	Tmp	14	3.060	09:36:09	09:37:10	0	+58	4°
6	Tmp	18	1.990	09:45:56	09:46:13	0	+14	4°
8	Tmp	23	4.500	09:50:51	09:53:39	0	+165	5°
9	Tmp	23	4.900	09:51:46	09:56:05	0	+256	6°
10	Tmp	26	0.400	10:01:37	10:01:36	0	-0	6°
11	Tmp	28	5.500	10:09:34	10:09:39	0	+2	6°
12	Tmp	30	2.200	10:13:43	10:13:51	0	+5	6°
16	Tmp	36	0.340	10:27:44	10:27:53	0	+6	6°
17	Tmp	36	2.270	10:30:16	10:30:48	0	+29	6°
18	Tmp	39	0.310	10:40:50	10:40:53	0	+0	6°
19	Tmp	42	2.320	10:44:06	10:44:23	0	+14	6°
20	Tmp	46	2.340	10:51:42	10:51:43	0	+0	6°
21	Tmp	46	3.050	10:52:49	10:52:50	0	+0	6°
22	Tmp	47	5.930	10:56:35	10:56:39	0	+1	6°
23	Tmp	49	7.360	10:58:36	10:58:39	0	+0	6°
24	Tmp	51	8.250	11:00:17	11:01:05	0	+45	6°
25	Tmp	51	9.380	11:01:54	11:02:29	0	+32	6°
26	Tmp	54	6.500	11:09:42	11:09:44	0	+0	6°
27	Tmp	54	6.720	11:10:08	11:10:24	0	+13	6°

PC	Tp	Trc	KmPC	Ideal	Passagem	Pen	Pontos	Col
Num 44	A	6°	PG 15	B	7°	PG 14	Tot PG 29	Col. 7°



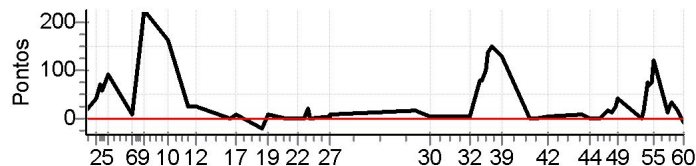
Moto Clube / Princesa Off Road / Zaitec	
.	

Etapa A	Num	44	Pen	0	PCZ	6	Total PP	745	PG	15
28	Tmp	58	2.230	11:46:28	11:46:30	0	+0	2°		
29	Tmp	59	2.880	11:48:05	11:48:26	0	+18	3°		
30	Tmp	60	5.550	11:52:24	11:52:24	0	+0	3°		
31	Tmp	64	2.520	12:06:18	12:06:20	0	+0	3°		
32	Tmp	65	4.770	12:09:24	12:09:32	0	+5	3°		
33	Tmp	67	6.830	12:13:06	12:13:29	0	+20	4°		
34	Tmp	69	7.380	12:14:22	12:14:52	0	+27	4°		
35	Tmp	69	7.920	12:15:43	12:16:48	0	+62	2°		
36	Tmp	69	8.290	12:16:39	12:19:02	0	+140	4°		
37	Tmp	69	9.150	12:18:48	12:23:12	0	+261	5°		
38	Tmp	71	1.200	12:21:12	12:25:59	0	+284	6°		
39	Tmp	71	2.230	12:22:55	12:27:37	0	+279	6°		
40	Tmp	76	5.100	12:34:28	12:34:40	0	+9	6°		
41	Tmp	76	7.200	12:37:12	12:37:16	0	+1	6°		
42	Tmp	77	3.910	12:41:51	12:41:52	0	+0	6°		
43	Tmp	80	0.310	12:56:20	12:54:59	0	-234	7°		
44	Tmp	81	3.010	12:59:31	12:59:35	0	+1	7°		
45	Tmp	84	5.450	13:04:24	13:04:27	0	+0	7°		
46	Tmp	85	8.060	13:07:36	13:07:47	0	+8	7°		
47	Tmp	87	1.100	13:08:59	13:09:06	0	+4	7°		
48	Tmp	87	2.250	13:10:54	13:11:35	0	+38	7°		
49	Tmp	88	2.760	13:11:45	13:12:44	0	+56	7°		
50	Tmp	92	1.520	13:21:33	13:21:35	0	+0	7°		
51	Tmp	93	1.980	13:22:24	13:22:45	0	+18	7°		
52	Tmp	94	2.730	13:24:01	13:26:27	0	+143	7°		
53	Tmp	95	3.140	13:24:36	13:26:55	0	+136	7°		
54	Tmp	95	3.830	13:25:59	13:28:56	0	+174	7°		
55	Tmp	97	4.650	13:27:14	13:30:19	0	+182	7°		
56	Tmp	100	0.650	13:32:58	13:33:22	0	+21	7°		
57	Tmp	101	1.030	13:33:34	13:34:28	0	+51	7°		
58	Tmp	101	1.800	13:34:32	13:35:35	0	+60	7°		
59	Tmp	101	3.670	13:36:52	13:38:04	0	+69	7°		
60	Tmp	102	6.100	13:39:30	13:40:24	0	+51	7°		
Etapa B	Num	44	Pen	0	PCZ	6	Total PP	2352	PG	14

N u m	75	Equipe	75 / Reinaldo Barreto (labareda)						
		Patrocinador							
		Cat / NL / Largada	EXECUTIVO / 22 / 09:10:30	Cidade	St Antonio				

PC	TP	TRC	KmPC	Ideal	Passagem	Pen	Pontos	Col
1	Tmp	4	0.420	09:27:53	09:28:13	0	+17	8°
2	Tmp	5	3.520	09:31:46	09:32:32	0	+43	6°
3	Tmp	9	0.900	09:33:23	09:34:34	0	+68	6°
4	Tmp	11	1.950	09:35:00	09:36:02	0	+59	6°
5	Tmp	14	3.060	09:37:09	09:38:42	0	+90	6°
6	Tmp	18	1.990	09:46:56	09:47:09	0	+10	6°
8	Tmp	23	4.500	09:51:51	09:55:00	0	+186	7°
9	Tmp	23	4.900	09:52:46	09:56:32	0	+223	7°
10	Tmp	26	0.400	10:02:37	10:05:21	0	+161	7°
11	Tmp	28	5.500	10:10:34	10:11:02	0	+25	7°
12	Tmp	30	2.200	10:14:43	10:15:09	0	+23	7°
16	Tmp	36	0.340	10:28:44	10:28:43	0	-0	7°
17	Tmp	36	2.270	10:31:16	10:31:26	0	+7	7°
18	Tmp	39	0.310	10:41:50	10:41:40	0	-21	7°
19	Tmp	42	2.320	10:45:06	10:45:17	0	+8	7°
20	Tmp	46	2.340	10:52:42	10:52:40	0	-0	7°
21	Tmp	46	3.050	10:53:49	10:53:49	0	+0	7°
22	Tmp	47	5.930	10:57:35	10:57:32	0	-0	7°
23	Tmp	49	7.360	10:59:36	10:59:38	0	+0	7°
24	Tmp	51	8.250	11:01:17	11:01:42	0	+22	7°
25	Tmp	51	9.380	11:02:54	11:02:58	0	+1	7°
26	Tmp	54	6.500	11:10:42	11:10:49	0	+4	7°
27	Tmp	54	6.720	11:11:08	11:11:20	0	+9	7°

PC	TP	TRC	KmPC	Ideal	Passagem	Pen	Pontos	Col					
Num	75	A	7°	PG	14	B	4°	PG	18	Tot PG	32	Col.	5°



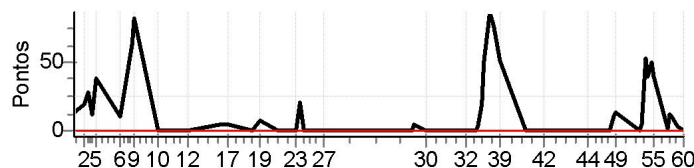
Moto Clube / Princesa Off Road / Zaitec	
.	

Etapa A	Num	75	Pen	0	PCZ	5	Total PP	977	PG	14
28	Tmp	58	2.230	11:47:28	11:47:49	0	+18	7°		
29	Tmp	59	2.880	11:49:05	11:49:21	0	+13	5°		
30	Tmp	60	5.550	11:53:24	11:53:32	0	+5	7°		
31	Tmp	64	2.520	12:07:18	12:07:26	0	+5	6°		
32	Tmp	65	4.770	12:10:24	12:10:31	0	+4	6°		
33	Tmp	67	6.830	12:14:06	12:15:26	0	+77	6°		
34	Tmp	69	7.380	12:15:22	12:16:44	0	+79	6°		
35	Tmp	69	7.920	12:16:43	12:18:27	0	+101	7°		
36	Tmp	69	8.290	12:17:39	12:20:00	0	+138	6°		
37	Tmp	69	9.150	12:19:48	12:22:21	0	+150	6°		
38	Tmp	71	1.200	12:22:12	12:24:32	0	+137	4°		
39	Tmp	71	2.230	12:23:55	12:26:06	0	+128	3°		
40	Tmp	76	5.100	12:35:28	12:35:28	0	+0	3°		
41	Tmp	76	7.200	12:38:12	12:38:12	0	+0	3°		
42	Tmp	77	3.910	12:42:51	12:42:56	0	+2	3°		
43	Tmp	80	0.310	12:57:20	12:57:30	0	+7	3°		
44	Tmp	81	3.010	13:00:31	13:00:30	0	-0	3°		
45	Tmp	84	5.450	13:05:24	13:05:28	0	+1	3°		
46	Tmp	85	8.060	13:08:36	13:08:57	0	+18	3°		
47	Tmp	87	1.100	13:09:59	13:10:15	0	+13	3°		
48	Tmp	87	2.250	13:11:54	13:12:21	0	+24	3°		
49	Tmp	88	2.760	13:12:45	13:13:27	0	+39	3°		
50	Tmp	92	1.520	13:22:33	13:22:37	0	+1	3°		
51	Tmp	93	1.980	13:23:24	13:23:44	0	+17	3°		
52	Tmp	94	2.730	13:25:01	13:26:19	0	+75	4°		
53	Tmp	95	3.140	13:25:36	13:26:43	0	+64	4°		
54	Tmp	95	3.830	13:26:59	13:28:16	0	+74	3°		
55	Tmp	97	4.650	13:28:14	13:30:17	0	+120	4°		
56	Tmp	100	0.650	13:33:58	13:34:15	0	+14	4°		
57	Tmp	101	1.030	13:34:34	13:35:02	0	+25	4°		
58	Tmp	101	1.800	13:35:32	13:36:09	0	+34	4°		
59	Tmp	101	3.670	13:37:52	13:38:13	0	+18	4°		
60	Tmp	102	6.100	13:40:30	13:40:24	0	-9	4°		
Etapa B	Num	75	Pen	0	PCZ	3	Total PP	1410	PG	18

N u m	104	Equipe	104 / Jairo Passos (sino de Igreja)					
		Patrocinador						
		Cat / NL / Largada	EXECUTIVO / 17 / 09:08:00			Cidade	Petrolina	

PC	Tp	Trc	KmPC	Ideal	Passagem	Pen	Pontos	Col
1	Tmp	4	0.420	09:25:23	09:25:39	0	+13	7°
2	Tmp	5	3.520	09:29:16	09:29:38	0	+19	3°
3	Tmp	9	0.900	09:30:53	09:31:25	0	+29	2°
4	Tmp	11	1.950	09:32:30	09:32:45	0	+12	2°
5	Tmp	14	3.060	09:34:39	09:35:21	0	+39	2°
6	Tmp	18	1.990	09:44:26	09:44:40	0	+11	2°
8	Tmp	23	4.500	09:49:21	09:50:28	0	+64	2°
9	Tmp	23	4.900	09:50:16	09:51:42	0	+83	1°
10	Tmp	26	0.400	10:00:07	10:00:05	0	-0	1°
11	Tmp	28	5.500	10:08:04	10:08:01	0	-0	1°
12	Tmp	30	2.200	10:12:13	10:12:12	0	-0	1°
16	Tmp	36	0.340	10:26:14	10:26:21	0	+4	1°
17	Tmp	36	2.270	10:28:46	10:28:54	0	+5	1°
18	Tmp	39	0.310	10:39:20	10:39:21	0	+0	1°
19	Tmp	42	2.320	10:42:36	10:42:47	0	+8	1°
20	Tmp	46	2.340	10:50:12	10:50:12	0	+0	1°
21	Tmp	46	3.050	10:51:19	10:51:20	0	+0	1°
22	Tmp	47	5.930	10:55:05	10:55:07	0	+0	1°
23	Tmp	49	7.360	10:57:06	10:57:08	0	+0	1°
24	Tmp	51	8.250	10:58:47	10:59:11	0	+21	1°
25	Tmp	51	9.380	11:00:24	11:00:23	0	-0	1°
26	Tmp	54	6.500	11:08:12	11:08:11	0	-0	1°
27	Tmp	54	6.720	11:08:38	11:08:39	0	+0	1°

PC	Tp	Trc	KmPC	Ideal	Passagem	Pen	Pontos	Col
Num 104	A	1°	PG 25	B	1°	PG 25	Tot PG 50	Col. 1°



Moto Clube / Princesa Off Road / Zaitec	
.	

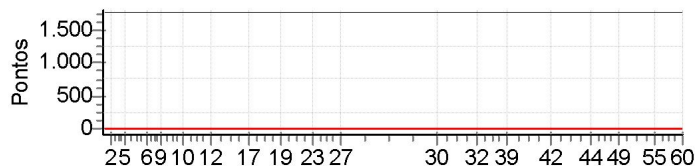
Etapa A	Num	104	Pen	0	PCZ	11	Total PP	308	PG	25
28	Tmp	58	2.230	11:44:58	11:44:58	0	+0	4°		
29	Tmp	59	2.880	11:46:35	11:46:43	0	+5	1°		
30	Tmp	60	5.550	11:50:54	11:50:55	0	+0	1°		
31	Tmp	64	2.520	12:04:48	12:04:49	0	+0	1°		
32	Tmp	65	4.770	12:07:54	12:07:52	0	-0	1°		
33	Tmp	67	6.830	12:11:36	12:11:35	0	-0	1°		
34	Tmp	69	7.380	12:12:52	12:12:58	0	+3	1°		
35	Tmp	69	7.920	12:14:13	12:14:35	0	+19	1°		
36	Tmp	69	8.290	12:15:09	12:16:03	0	+51	1°		
37	Tmp	69	9.150	12:17:18	12:18:49	0	+88	1°		
38	Tmp	71	1.200	12:19:42	12:21:03	0	+78	1°		
39	Tmp	71	2.230	12:21:25	12:22:20	0	+52	1°		
40	Tmp	76	5.100	12:32:58	12:33:00	0	+0	1°		
41	Tmp	76	7.200	12:35:42	12:35:44	0	+0	1°		
42	Tmp	77	3.910	12:40:21	12:40:21	0	+0	1°		
43	Tmp	80	0.310	12:54:50	12:54:51	0	+0	1°		
44	Tmp	81	3.010	12:58:01	12:58:03	0	+0	1°		
45	Tmp	84	5.450	13:02:54	13:02:56	0	+0	1°		
46	Tmp	85	8.060	13:06:06	13:06:04	0	-0	1°		
47	Tmp	87	1.100	13:07:29	13:07:29	0	+0	1°		
48	Tmp	87	2.250	13:09:24	13:09:37	0	+10	1°		
49	Tmp	88	2.760	13:10:15	13:10:31	0	+13	1°		
50	Tmp	92	1.520	13:20:03	13:20:00	0	-0	1°		
51	Tmp	93	1.980	13:20:54	13:21:01	0	+4	1°		
52	Tmp	94	2.730	13:22:31	13:23:28	0	+54	1°		
53	Tmp	95	3.140	13:23:06	13:23:50	0	+41	1°		
54	Tmp	95	3.830	13:24:29	13:25:23	0	+51	1°		
55	Tmp	97	4.650	13:25:44	13:26:28	0	+41	1°		
56	Tmp	100	0.650	13:31:28	13:31:33	0	+2	1°		
57	Tmp	101	1.030	13:32:04	13:32:19	0	+12	1°		
58	Tmp	101	1.800	13:33:02	13:33:15	0	+10	1°		
59	Tmp	101	3.670	13:35:22	13:35:28	0	+3	1°		
60	Tmp	102	6.100	13:38:00	13:38:02	0	+0	1°		

Etapa B	Num	104	Pen	0	PCZ	15	Total PP	537	PG	25
---------	-----	-----	-----	---	-----	----	----------	-----	----	----

N u m	111	Equipe	111 / Luis Carlos (zebra)						
		Patrocinador							
		Cat / NL / Largada	EXECUTIVO / 21 / 09:10:00	Cidade	Ssa				

PC	Tp	Trc	KmPC	Ideal	Passagem	Pen	Pontos	Col
1	Tmp	4	0.420	09:27:23		0	+1800	9°
2	Tmp	5	3.520	09:31:16		0	+1800	9°
3	Tmp	9	0.900	09:32:53		0	+1800	9°
4	Tmp	11	1.950	09:34:30		0	+1800	9°
5	Tmp	14	3.060	09:36:39		0	+1800	9°
6	Tmp	18	1.990	09:46:26		0	+1800	9°
8	Tmp	23	4.500	09:51:21		0	+1800	9°
9	Tmp	23	4.900	09:52:16		0	+1800	9°
10	Tmp	26	0.400	10:10:07		0	+1800	9°
11	Tmp	28	5.500	10:10:04		0	+1800	9°
12	Tmp	30	2.200	10:14:13		0	+1800	9°
16	Tmp	36	0.340	10:28:14		0	+1800	9°
17	Tmp	36	2.270	10:30:46		0	+1800	9°
18	Tmp	39	0.310	10:41:20		0	+1800	9°
19	Tmp	42	2.320	10:44:36		0	+1800	9°
20	Tmp	46	2.340	10:52:12		0	+1800	9°
21	Tmp	46	3.050	10:53:19		0	+1800	9°
22	Tmp	47	5.930	10:57:05		0	+1800	9°
23	Tmp	49	7.360	10:59:06		0	+1800	9°
24	Tmp	51	8.250	11:00:47		0	+1800	9°
25	Tmp	51	9.380	11:02:24		0	+1800	9°
26	Tmp	54	6.500	11:10:12		0	+1800	9°
27	Tmp	54	6.720	11:10:38		0	+1800	9°

PC	Tp	Trc	KmPC	Ideal	Passagem	Pen	Pontos	Col					
Num	111	A	NC	PG	0	B	NC	PG	0	Tot PG	0	Col.	9°



Moto Clube / Princesa Off Road / Zaitec									
.									

Etapa A	Num	111	Pen	0	PCZ	0	Total PP	41400	PG	0
----------------	-----	-----	-----	---	-----	---	----------	-------	----	---

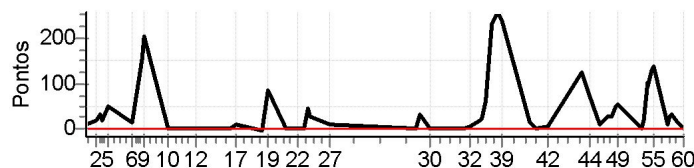
28	Tmp	58	2.230	11:46:58		0	+1800	9°
29	Tmp	59	2.880	11:48:35		0	+1800	9°
30	Tmp	60	5.550	11:52:54		0	+1800	9°
31	Tmp	64	2.520	12:06:48		0	+1800	9°
32	Tmp	65	4.770	12:09:54		0	+1800	9°
33	Tmp	67	6.830	12:13:36		0	+1800	9°
34	Tmp	69	7.380	12:14:52		0	+1800	9°
35	Tmp	69	7.920	12:16:13		0	+1800	9°
36	Tmp	69	8.290	12:17:09		0	+1800	9°
37	Tmp	69	9.150	12:19:18		0	+1800	9°
38	Tmp	71	1.200	12:21:42		0	+1800	9°
39	Tmp	71	2.230	12:23:25		0	+1800	9°
40	Tmp	76	5.100	12:34:58		0	+1800	9°
41	Tmp	76	7.200	12:37:42		0	+1800	9°
42	Tmp	77	3.910	12:42:21		0	+1800	9°
43	Tmp	80	0.310	12:56:50		0	+1800	9°
44	Tmp	81	3.010	13:00:01		0	+1800	9°
45	Tmp	84	5.450	13:04:54		0	+1800	9°
46	Tmp	85	8.060	13:08:06		0	+1800	9°
47	Tmp	87	1.100	13:09:29		0	+1800	9°
48	Tmp	87	2.250	13:11:24		0	+1800	9°
49	Tmp	88	2.760	13:12:15		0	+1800	9°
50	Tmp	92	1.520	13:22:03		0	+1800	9°
51	Tmp	93	1.980	13:22:54		0	+1800	9°
52	Tmp	94	2.730	13:24:31		0	+1800	9°
53	Tmp	95	3.140	13:25:06		0	+1800	9°
54	Tmp	95	3.830	13:26:29		0	+1800	9°
55	Tmp	97	4.650	13:27:44		0	+1800	9°
56	Tmp	100	0.650	13:33:28		0	+1800	9°
57	Tmp	101	1.030	13:34:04		0	+1800	9°
58	Tmp	101	1.800	13:35:02		0	+1800	9°
59	Tmp	101	3.670	13:37:22		0	+1800	9°
60	Tmp	102	6.100	13:40:00		0	+1800	9°

Etapa B	Num	111	Pen	0	PCZ	0	Total PP	59400	PG	0
----------------	-----	-----	-----	---	-----	---	----------	-------	----	---

N u m	127	Equipe	127 / Fabio Fonseca (tucano)						
		Patrocinador							
		Cat / NL / Largada	EXECUTIVO / 18 / 09:08:30	Cidade					

PC	Tp	Trc	KmPC	Ideal	Passagem	Pen	Pontos	Col
1	Tmp	4	0.420	09:25:53	09:26:07	0	+11	3°
2	Tmp	5	3.520	09:29:46	09:30:06	0	+17	2°
3	Tmp	9	0.900	09:31:23	09:32:00	0	+34	3°
4	Tmp	11	1.950	09:33:00	09:33:24	0	+21	3°
5	Tmp	14	3.060	09:35:09	09:36:00	0	+48	3°
6	Tmp	18	1.990	09:44:56	09:45:14	0	+15	3°
8	Tmp	23	4.500	09:49:51	09:52:28	0	+154	4°
9	Tmp	23	4.900	09:50:46	09:54:12	0	+203	4°
10	Tmp	26	0.400	10:00:37	10:00:38	0	+0	4°
11	Tmp	28	5.500	10:08:34	10:08:37	0	+0	4°
12	Tmp	30	2.200	10:12:43	10:12:48	0	+2	4°
16	Tmp	36	0.340	10:26:44	10:26:48	0	+1	4°
17	Tmp	36	2.270	10:29:16	10:29:31	0	+12	4°
18	Tmp	39	0.310	10:39:50	10:39:46	0	-3	4°
19	Tmp	42	2.320	10:43:06	10:44:32	0	+83	4°
20	Tmp	46	2.340	10:50:42	10:50:42	0	+0	4°
21	Tmp	46	3.050	10:51:49	10:51:50	0	+0	4°
22	Tmp	47	5.930	10:55:35	10:55:41	0	+3	4°
23	Tmp	49	7.360	10:57:36	10:57:41	0	+2	4°
24	Tmp	51	8.250	10:59:17	11:00:04	0	+44	4°
25	Tmp	51	9.380	11:00:54	11:01:25	0	+28	5°
26	Tmp	54	6.500	11:08:42	11:08:54	0	+9	5°
27	Tmp	54	6.720	11:09:08	11:09:20	0	+9	5°

PC	Tp	Trc	KmPC	Ideal	Passagem	Pen	Pontos	Col
Num 127	A	5°	PG 16	B	6°	PG 15	Tot PG 31	Col. 6°



Moto Clube / Princesa Off Road / Zaitec	
.	

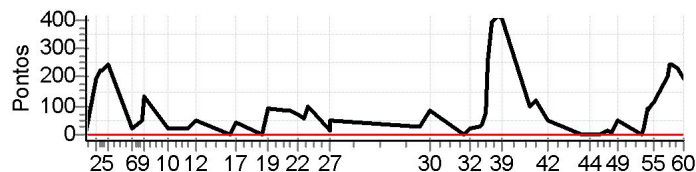
Etapa A	Num	127	Pen	0	PCZ	4	Total PP	699	PG	16
28	Tmp	58	2.230	11:45:28	11:45:31	0	+0	3°		
29	Tmp	59	2.880	11:47:05	11:47:42	0	+34	7°		
30	Tmp	60	5.550	11:51:24	11:51:26	0	+0	6°		
31	Tmp	64	2.520	12:05:18	12:05:23	0	+2	5°		
32	Tmp	65	4.770	12:08:24	12:08:35	0	+8	5°		
33	Tmp	67	6.830	12:12:06	12:12:26	0	+17	5°		
34	Tmp	69	7.380	12:13:22	12:13:49	0	+24	5°		
35	Tmp	69	7.920	12:14:43	12:15:49	0	+63	4°		
36	Tmp	69	8.290	12:15:39	12:17:42	0	+120	3°		
37	Tmp	69	9.150	12:17:48	12:21:43	0	+232	4°		
38	Tmp	71	1.200	12:20:12	12:24:32	0	+257	5°		
39	Tmp	71	2.230	12:21:55	12:25:58	0	+240	5°		
40	Tmp	76	5.100	12:33:28	12:33:47	0	+16	5°		
41	Tmp	76	7.200	12:36:12	12:36:18	0	+3	5°		
42	Tmp	77	3.910	12:40:51	12:40:59	0	+5	5°		
43	Tmp	80	0.310	12:55:20	12:57:26	0	+123	5°		
44	Tmp	81	3.010	12:58:31	12:59:44	0	+70	5°		
45	Tmp	84	5.450	13:03:24	13:03:38	0	+11	5°		
46	Tmp	85	8.060	13:06:36	13:07:09	0	+30	6°		
47	Tmp	87	1.100	13:07:59	13:08:31	0	+29	6°		
48	Tmp	87	2.250	13:09:54	13:10:48	0	+51	6°		
49	Tmp	88	2.760	13:10:45	13:11:44	0	+56	6°		
50	Tmp	92	1.520	13:20:33	13:20:35	0	+0	6°		
51	Tmp	93	1.980	13:21:24	13:21:47	0	+20	6°		
52	Tmp	94	2.730	13:23:01	13:24:46	0	+102	6°		
53	Tmp	95	3.140	13:23:36	13:25:15	0	+96	6°		
54	Tmp	95	3.830	13:24:59	13:27:13	0	+131	6°		
55	Tmp	97	4.650	13:26:14	13:28:33	0	+136	6°		
56	Tmp	100	0.650	13:31:58	13:32:10	0	+9	6°		
57	Tmp	101	1.030	13:32:34	13:33:07	0	+30	6°		
58	Tmp	101	1.800	13:33:32	13:34:08	0	+33	6°		
59	Tmp	101	3.670	13:35:52	13:36:11	0	+16	6°		
60	Tmp	102	6.100	13:38:30	13:38:34	0	+1	6°		

Etapa B	Num	127	Pen	0	PCZ	3	Total PP	1965	PG	15
---------	-----	-----	-----	---	-----	---	----------	------	----	----

N u m	151	Equipe	151 / Claudio Torres (carrasco)						
		Patrocinador							
		Cat / NL / Largada	EXECUTIVO / 24 / 09:11:30	Cidade	Ssa				

PC	Tp	Trc	KmPC	Ideal	Passagem	Pen	Pontos	Col
1	Tmp	4	0.420	09:28:53	09:29:09	0	+13	5°
2	Tmp	5	3.520	09:32:46	09:36:05	0	+196	8°
3	Tmp	9	0.900	09:34:23	09:38:08	0	+222	8°
4	Tmp	11	1.950	09:36:00	09:39:50	0	+227	8°
5	Tmp	14	3.060	09:38:09	09:42:15	0	+243	8°
6	Tmp	18	1.990	09:47:56	09:48:18	0	+19	8°
8	Tmp	23	4.500	09:52:51	09:53:45	0	+51	8°
9	Tmp	23	4.900	09:53:46	09:55:59	0	+130	8°
10	Tmp	26	0.400	10:03:37	10:04:04	0	+24	8°
11	Tmp	28	5.500	10:11:34	10:12:00	0	+23	8°
12	Tmp	30	2.200	10:15:43	10:16:35	0	+49	8°
16	Tmp	36	0.340	10:29:44	10:29:44	0	+0	8°
17	Tmp	36	2.270	10:32:16	10:32:59	0	+40	8°
18	Tmp	39	0.310	10:42:50	10:42:47	0	-0	8°
19	Tmp	42	2.320	10:46:06	10:47:43	0	+94	8°
20	Tmp	46	2.340	10:53:42	10:55:12	0	+87	8°
21	Tmp	46	3.050	10:54:49	10:56:14	0	+82	8°
22	Tmp	47	5.930	10:58:35	10:59:45	0	+67	8°
23	Tmp	49	7.360	11:00:36	11:01:38	0	+59	8°
24	Tmp	51	8.250	11:02:17	11:03:59	0	+99	8°
25	Tmp	51	9.380	11:03:54	11:05:29	0	+92	8°
26	Tmp	54	6.500	11:11:42	11:12:00	0	+15	8°
27	Tmp	54	6.720	11:12:08	11:12:58	0	+47	8°

PC	Tp	Trc	KmPC	Ideal	Passagem	Pen	Pontos	Col					
Num	151	A	8°	PG	13	B	8°	PG	13	Tot PG	26	Col.	8°



Moto Clube / Princesa Off Road / Zaitec	
.	

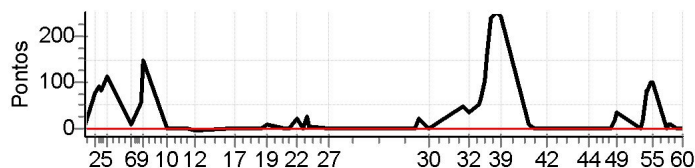
Etapa A	Num	151	Pen	0	PCZ	2	Total PP	1879	PG	13
28	Tmp	58	2.230	11:48:28	11:48:58	0	+27	8°		
29	Tmp	59	2.880	11:50:05	11:50:39	0	+31	8°		
30	Tmp	60	5.550	11:54:24	11:55:50	0	+83	8°		
31	Tmp	64	2.520	12:08:18	12:08:22	0	+1	8°		
32	Tmp	65	4.770	12:11:24	12:11:47	0	+20	8°		
33	Tmp	67	6.830	12:15:06	12:15:35	0	+26	8°		
34	Tmp	69	7.380	12:16:22	12:17:00	0	+35	7°		
35	Tmp	69	7.920	12:17:43	12:19:05	0	+79	6°		
36	Tmp	69	8.290	12:18:39	12:23:02	0	+260	8°		
37	Tmp	69	9.150	12:20:48	12:27:25	0	+394	8°		
38	Tmp	71	1.200	12:23:12	12:30:09	0	+414	8°		
39	Tmp	71	2.230	12:24:55	12:31:46	0	+408	8°		
40	Tmp	76	5.100	12:36:28	12:38:08	0	+97	8°		
41	Tmp	76	7.200	12:39:12	12:41:14	0	+119	8°		
42	Tmp	77	3.910	12:43:51	12:44:45	0	+51	8°		
43	Tmp	80	0.310	12:58:20	12:58:25	0	+2	8°		
44	Tmp	81	3.010	13:01:31	13:01:30	0	-0	8°		
45	Tmp	84	5.450	13:06:24	13:06:24	0	+0	8°		
46	Tmp	85	8.060	13:09:36	13:09:50	0	+11	8°		
47	Tmp	87	1.100	13:10:59	13:11:10	0	+8	8°		
48	Tmp	87	2.250	13:12:54	13:13:35	0	+38	8°		
49	Tmp	88	2.760	13:13:45	13:14:35	0	+47	8°		
50	Tmp	92	1.520	13:23:33	13:23:35	0	+0	8°		
51	Tmp	93	1.980	13:24:24	13:24:47	0	+20	8°		
52	Tmp	94	2.730	13:26:01	13:27:35	0	+91	8°		
53	Tmp	95	3.140	13:26:36	13:28:06	0	+87	8°		
54	Tmp	95	3.830	13:27:59	13:29:50	0	+108	8°		
55	Tmp	97	4.650	13:29:14	13:31:07	0	+110	8°		
56	Tmp	100	0.650	13:34:58	13:38:28	0	+207	8°		
57	Tmp	101	1.030	13:35:34	13:39:42	0	+245	8°		
58	Tmp	101	1.800	13:36:32	13:40:40	0	+245	8°		
59	Tmp	101	3.670	13:38:52	13:42:45	0	+230	8°		
60	Tmp	102	6.100	13:41:30	13:44:49	0	+196	8°		

Etapa B	Num	151	Pen	0	PCZ	3	Total PP	3690	PG	13
---------	-----	-----	-----	---	-----	---	----------	------	----	----

N u m	153	Equipe	153 / Vanderley Barreto (van)					
		Patrocinador						
		Cat / NL / Largada	EXECUTIVO / 23 / 09:11:00	Cidade	Feira			

PC	Tp	Trc	KmPC	Ideal	Passagem	Pen	Pontos	Col
1	Tmp	4	0.420	09:28:23	09:28:36	0	+10	2°
2	Tmp	5	3.520	09:32:16	09:33:40	0	+81	7°
3	Tmp	9	0.900	09:33:53	09:35:26	0	+90	7°
4	Tmp	11	1.950	09:35:30	09:36:58	0	+85	7°
5	Tmp	14	3.060	09:37:39	09:39:34	0	+112	7°
6	Tmp	18	1.990	09:47:26	09:47:38	0	+9	7°
8	Tmp	23	4.500	09:52:21	09:53:23	0	+59	6°
9	Tmp	23	4.900	09:53:16	09:55:49	0	+150	5°
10	Tmp	26	0.400	10:03:07	10:03:07	0	+0	5°
11	Tmp	28	5.500	10:11:04	10:11:02	0	-0	5°
12	Tmp	30	2.200	10:15:13	10:15:09	0	-3	5°
16	Tmp	36	0.340	10:29:14	10:29:17	0	+0	5°
17	Tmp	36	2.270	10:31:46	10:31:51	0	+2	5°
18	Tmp	39	0.310	10:42:20	10:42:24	0	+1	5°
19	Tmp	42	2.320	10:45:36	10:45:50	0	+11	5°
20	Tmp	46	2.340	10:53:12	10:53:11	0	-0	5°
21	Tmp	46	3.050	10:54:19	10:54:18	0	-0	5°
22	Tmp	47	5.930	10:58:05	10:58:31	0	+23	5°
23	Tmp	49	7.360	11:00:06	11:00:09	0	+0	5°
24	Tmp	51	8.250	11:01:47	11:02:18	0	+28	5°
25	Tmp	51	9.380	11:03:24	11:03:32	0	+5	4°
26	Tmp	54	6.500	11:11:12	11:11:12	0	+0	4°
27	Tmp	54	6.720	11:11:38	11:11:35	0	-0	4°

PC	Tp	Trc	KmPC	Ideal	Passagem	Pen	Pontos	Col
Num 153	A	4°	PG 18	B	5°	PG 16	Tot PG 34	Col. 4°



Moto Clube / Princesa Off Road / Zaitec	
.	

Etapa A	Num	153	Pen	0	PCZ	8	Total PP	669	PG	18
28	Tmp	58	2.230	11:47:58	11:47:56	0	-0	1°		
29	Tmp	59	2.880	11:49:35	11:50:02	0	+24	4°		
30	Tmp	60	5.550	11:53:54	11:53:54	0	+0	4°		
31	Tmp	64	2.520	12:07:48	12:08:40	0	+49	7°		
32	Tmp	65	4.770	12:10:54	12:11:33	0	+36	7°		
33	Tmp	67	6.830	12:14:36	12:15:34	0	+55	7°		
34	Tmp	69	7.380	12:15:52	12:17:02	0	+67	8°		
35	Tmp	69	7.920	12:17:13	12:19:02	0	+106	8°		
36	Tmp	69	8.290	12:18:09	12:20:50	0	+158	7°		
37	Tmp	69	9.150	12:20:18	12:24:19	0	+238	7°		
38	Tmp	71	1.200	12:22:42	12:26:57	0	+252	7°		
39	Tmp	71	2.230	12:24:25	12:28:33	0	+245	7°		
40	Tmp	76	5.100	12:35:58	12:36:13	0	+12	7°		
41	Tmp	76	7.200	12:38:42	12:38:43	0	+0	7°		
42	Tmp	77	3.910	12:43:21	12:43:22	0	+0	7°		
43	Tmp	80	0.310	12:57:50	12:57:51	0	+0	6°		
44	Tmp	81	3.010	13:01:01	13:00:59	0	-0	6°		
45	Tmp	84	5.450	13:05:54	13:05:55	0	+0	6°		
46	Tmp	85	8.060	13:09:06	13:09:09	0	+0	5°		
47	Tmp	87	1.100	13:10:29	13:10:31	0	+0	5°		
48	Tmp	87	2.250	13:12:24	13:12:46	0	+19	5°		
49	Tmp	88	2.760	13:13:15	13:13:52	0	+34	5°		
50	Tmp	92	1.520	13:23:03	13:23:02	0	-0	5°		
51	Tmp	93	1.980	13:23:54	13:24:15	0	+18	5°		
52	Tmp	94	2.730	13:25:31	13:26:56	0	+82	5°		
53	Tmp	95	3.140	13:26:06	13:27:26	0	+77	5°		
54	Tmp	95	3.830	13:27:29	13:29:11	0	+99	5°		
55	Tmp	97	4.650	13:28:44	13:30:26	0	+99	5°		
56	Tmp	100	0.650	13:34:28	13:34:30	0	+0	5°		
57	Tmp	101	1.030	13:35:04	13:35:19	0	+12	5°		
58	Tmp	101	1.800	13:36:02	13:36:16	0	+11	5°		
59	Tmp	101	3.670	13:38:22	13:38:25	0	+0	5°		
60	Tmp	102	6.100	13:41:00	13:41:00	0	+0	5°		
Etapa B	Num	153	Pen	0	PCZ	13	Total PP	1693	PG	16