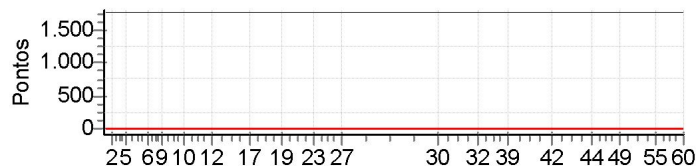


N u m	23	Equipe	23 / Frederico Lopes (fredão)						
		Patrocinador							
		Cat / NL / Largada	JUNIOR / 34 / 09:16:30	Cidade	Ssa				

PC	Tp	Trc	KmPC	Ideal	Passagem	Pen	Pontos	Col
1	Tmp	4	0.420	09:33:53		0	+1800	12°
2	Tmp	5	3.520	09:37:46		0	+1800	12°
3	Tmp	9	0.900	09:39:23		0	+1800	12°
4	Tmp	11	1.950	09:41:00		0	+1800	12°
5	Tmp	14	3.060	09:43:09		0	+1800	12°
6	Tmp	18	1.990	09:52:56		0	+1800	12°
8	Tmp	23	4.500	09:57:51		0	+1800	12°
9	Tmp	23	4.900	09:58:46		0	+1800	12°
10	Tmp	26	0.400	10:08:37		0	+1800	12°
11	Tmp	28	5.500	10:16:34		0	+1800	12°
12	Tmp	30	2.200	10:20:43		0	+1800	12°
16	Tmp	36	0.340	10:34:44		0	+1800	12°
17	Tmp	36	2.270	10:37:16		0	+1800	12°
18	Tmp	39	0.310	10:47:50		0	+1800	12°
19	Tmp	42	2.320	10:51:06		0	+1800	12°
20	Tmp	46	2.340	10:58:42		0	+1800	12°
21	Tmp	46	3.050	10:59:49		0	+1800	12°
22	Tmp	47	5.930	11:03:35		0	+1800	12°
23	Tmp	49	7.360	11:05:36		0	+1800	12°
24	Tmp	51	8.250	11:07:17		0	+1800	12°
25	Tmp	51	9.380	11:08:54		0	+1800	12°
26	Tmp	54	6.500	11:16:42		0	+1800	12°
27	Tmp	54	6.720	11:17:08		0	+1800	12°

PC	Tp	Trc	KmPC	Ideal	Passagem	Pen	Pontos	Col					
Num	23	A	NC	PG	0	B	NC	PG	0	Tot PG	0	Col.	12°



Moto Clube / Princesa Off Road / Zaitec									
.									

Etapa A	Num	23	Pen	0	PCZ	0	Total PP	41400	PG	0
----------------	-----	----	-----	---	-----	---	----------	-------	----	---

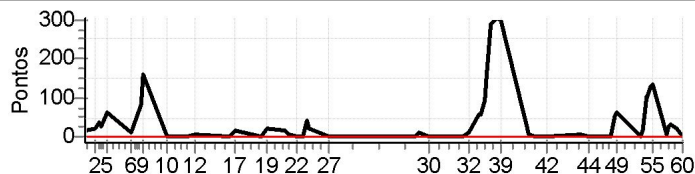
28	Tmp	58	2.230	11:53:28		0	+1800	12°
29	Tmp	59	2.880	11:55:05		0	+1800	12°
30	Tmp	60	5.550	11:59:24		0	+1800	12°
31	Tmp	64	2.520	12:13:18		0	+1800	12°
32	Tmp	65	4.770	12:16:24		0	+1800	12°
33	Tmp	67	6.830	12:20:06		0	+1800	12°
34	Tmp	69	7.380	12:21:22		0	+1800	12°
35	Tmp	69	7.920	12:22:43		0	+1800	12°
36	Tmp	69	8.290	12:23:39		0	+1800	12°
37	Tmp	69	9.150	12:25:48		0	+1800	12°
38	Tmp	71	1.200	12:28:12		0	+1800	12°
39	Tmp	71	2.230	12:29:55		0	+1800	12°
40	Tmp	76	5.100	12:41:28		0	+1800	12°
41	Tmp	76	7.200	12:44:12		0	+1800	12°
42	Tmp	77	3.910	12:48:51		0	+1800	12°
43	Tmp	80	0.310	13:03:20		0	+1800	12°
44	Tmp	81	3.010	13:06:31		0	+1800	12°
45	Tmp	84	5.450	13:11:24		0	+1800	12°
46	Tmp	85	8.060	13:14:36		0	+1800	12°
47	Tmp	87	1.100	13:15:59		0	+1800	12°
48	Tmp	87	2.250	13:17:54		0	+1800	12°
49	Tmp	88	2.760	13:18:45		0	+1800	12°
50	Tmp	92	1.520	13:28:33		0	+1800	12°
51	Tmp	93	1.980	13:29:24		0	+1800	12°
52	Tmp	94	2.730	13:31:01		0	+1800	12°
53	Tmp	95	3.140	13:31:36		0	+1800	12°
54	Tmp	95	3.830	13:32:59		0	+1800	12°
55	Tmp	97	4.650	13:34:14		0	+1800	12°
56	Tmp	100	0.650	13:39:58		0	+1800	12°
57	Tmp	101	1.030	13:40:34		0	+1800	12°
58	Tmp	101	1.800	13:41:32		0	+1800	12°
59	Tmp	101	3.670	13:43:52		0	+1800	12°
60	Tmp	102	6.100	13:46:30		0	+1800	12°

Etapa B	Num	23	Pen	0	PCZ	0	Total PP	59400	PG	0
----------------	-----	----	-----	---	-----	---	----------	-------	----	---

N u m	42	Equipe	42 / Bruno Teixeira (bubuca)						
		Patrocinador							
		Cat / NL / Largada	JUNIOR / 38 / 09:18:30	Cidade	Ssa				

PC	Tp	Trc	KmPC	Ideal	Passagem	Pen	Pontos	Col
1	Tmp	4	0.420	09:35:53	09:36:09	0	+13	5°
2	Tmp	5	3.520	09:39:46	09:40:09	0	+20	7°
3	Tmp	9	0.900	09:41:23	09:42:04	0	+38	8°
4	Tmp	11	1.950	09:43:00	09:43:30	0	+27	10°
5	Tmp	14	3.060	09:45:09	09:46:16	0	+64	10°
6	Tmp	18	1.990	09:54:56	09:55:10	0	+11	10°
8	Tmp	23	4.500	09:59:51	10:01:14	0	+80	8°
9	Tmp	23	4.900	10:00:46	10:03:29	0	+160	7°
10	Tmp	26	0.400	10:10:37	10:10:35	0	-0	7°
11	Tmp	28	5.500	10:18:34	10:18:36	0	+0	7°
12	Tmp	30	2.200	10:22:43	10:22:50	0	+4	7°
16	Tmp	36	0.340	10:36:44	10:36:46	0	+0	7°
17	Tmp	36	2.270	10:39:16	10:39:36	0	+17	7°
18	Tmp	39	0.310	10:49:50	10:49:53	0	+0	7°
19	Tmp	42	2.320	10:53:06	10:53:30	0	+21	7°
20	Tmp	46	2.340	11:00:42	11:01:03	0	+18	8°
21	Tmp	46	3.050	11:01:49	11:01:59	0	+7	8°
22	Tmp	47	5.930	11:05:35	11:05:36	0	+0	8°
23	Tmp	49	7.360	11:07:36	11:07:40	0	+1	8°
24	Tmp	51	8.250	11:09:17	11:09:59	0	+39	8°
25	Tmp	51	9.380	11:10:54	11:11:17	0	+20	7°
26	Tmp	54	6.500	11:18:42	11:18:44	0	+0	7°
27	Tmp	54	6.720	11:19:08	11:19:10	0	+0	7°

PC	Tp	Trc	KmPC	Ideal	Passagem	Pen	Pontos	Col					
Num	42	A	7°	PG	14	B	10°	PG	11	Tot PG	25	Col.	11°



Moto Clube / Princesa Off Road / Zaitec	
.	

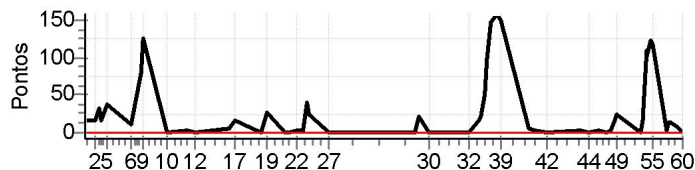
Etapa A	Num	42	Pen	0	PCZ	7	Total PP	540	PG	14
28	Tmp	58	2.230	11:55:28	11:55:26	0	-0	5°		
29	Tmp	59	2.880	11:57:05	11:57:16	0	+8	4°		
30	Tmp	60	5.550	12:01:24	12:01:27	0	+0	4°		
31	Tmp	64	2.520	12:15:18	12:15:18	0	+0	3°		
32	Tmp	65	4.770	12:18:24	12:18:35	0	+8	3°		
33	Tmp	67	6.830	12:22:06	12:23:05	0	+56	9°		
34	Tmp	69	7.380	12:23:22	12:24:24	0	+59	9°		
35	Tmp	69	7.920	12:24:43	12:26:21	0	+95	9°		
36	Tmp	69	8.290	12:25:39	12:28:28	0	+166	10°		
37	Tmp	69	9.150	12:27:48	12:32:39	0	+288	10°		
38	Tmp	71	1.200	12:30:12	12:35:19	0	+304	11°		
39	Tmp	71	2.230	12:31:55	12:36:55	0	+297	11°		
40	Tmp	76	5.100	12:43:28	12:43:36	0	+5	11°		
41	Tmp	76	7.200	12:46:12	12:46:16	0	+1	11°		
42	Tmp	77	3.910	12:50:51	12:50:53	0	+0	11°		
43	Tmp	80	0.310	13:05:20	13:05:27	0	+4	11°		
44	Tmp	81	3.010	13:08:31	13:08:34	0	+0	11°		
45	Tmp	84	5.450	13:13:24	13:13:28	0	+1	11°		
46	Tmp	85	8.060	13:16:36	13:16:38	0	+0	11°		
47	Tmp	87	1.100	13:17:59	13:17:59	0	+0	11°		
48	Tmp	87	2.250	13:19:54	13:20:48	0	+51	11°		
49	Tmp	88	2.760	13:20:45	13:21:49	0	+61	11°		
50	Tmp	92	1.520	13:30:33	13:30:33	0	+0	11°		
51	Tmp	93	1.980	13:31:24	13:31:45	0	+18	11°		
52	Tmp	94	2.730	13:33:01	13:34:48	0	+104	11°		
53	Tmp	95	3.140	13:33:36	13:35:17	0	+98	11°		
54	Tmp	95	3.830	13:34:59	13:37:13	0	+131	11°		
55	Tmp	97	4.650	13:36:14	13:38:29	0	+132	10°		
56	Tmp	100	0.650	13:41:58	13:42:08	0	+7	10°		
57	Tmp	101	1.030	13:42:34	13:43:02	0	+25	10°		
58	Tmp	101	1.800	13:43:32	13:44:05	0	+30	10°		
59	Tmp	101	3.670	13:45:52	13:46:17	0	+22	10°		
60	Tmp	102	6.100	13:48:30	13:48:33	0	+0	10°		

Etapa B	Num	42	Pen	0	PCZ	9	Total PP	1971	PG	11
---------	-----	----	-----	---	-----	---	----------	------	----	----

N u m	43	Equipe	43 / Sandro Costa (jujuba)					
		Patrocinador						
		Cat / NL / Largada	JUNIOR / 37 / 09:18:00			Cidade	Ssa	

PC	Tp	Trc	KmPC	Ideal	Passagem	Pen	Pontos	Col
1	Tmp	4	0.420	09:35:23	09:35:43	0	+17	10°
2	Tmp	5	3.520	09:39:16	09:39:36	0	+17	8°
3	Tmp	9	0.900	09:40:53	09:41:28	0	+32	7°
4	Tmp	11	1.950	09:42:30	09:42:48	0	+15	6°
5	Tmp	14	3.060	09:44:39	09:45:19	0	+37	6°
6	Tmp	18	1.990	09:54:26	09:54:39	0	+10	6°
8	Tmp	23	4.500	09:59:21	10:00:45	0	+81	3°
9	Tmp	23	4.900	10:00:16	10:02:24	0	+125	3°
10	Tmp	26	0.400	10:10:07	10:10:05	0	-0	3°
11	Tmp	28	5.500	10:18:04	10:18:11	0	+4	3°
12	Tmp	30	2.200	10:22:13	10:22:11	0	-0	3°
16	Tmp	36	0.340	10:36:14	10:36:23	0	+6	3°
17	Tmp	36	2.270	10:38:46	10:39:05	0	+16	3°
18	Tmp	39	0.310	10:49:20	10:49:24	0	+1	3°
19	Tmp	42	2.320	10:52:36	10:53:07	0	+28	3°
20	Tmp	46	2.340	11:00:12	11:00:12	0	+0	3°
21	Tmp	46	3.050	11:01:19	11:01:22	0	+0	3°
22	Tmp	47	5.930	11:05:05	11:05:11	0	+3	4°
23	Tmp	49	7.360	11:07:06	11:07:12	0	+3	4°
24	Tmp	51	8.250	11:08:47	11:09:30	0	+40	4°
25	Tmp	51	9.380	11:10:24	11:10:50	0	+23	4°
26	Tmp	54	6.500	11:18:12	11:18:14	0	+0	4°
27	Tmp	54	6.720	11:18:38	11:18:40	0	+0	4°

PC	Tp	Trc	KmPC	Ideal	Passagem	Pen	Pontos	Col
Num 43	A	4°	PG 18	B	5°	PG 16	Tot PG 34	Col. 6°



Moto Clube / Princesa Off Road / Zaitec	
.	

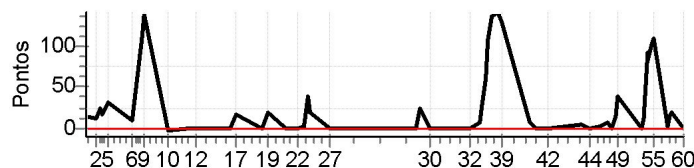
Etapa A	Num	43	Pen	0	PCZ	6	Total PP	458	PG	18
28	Tmp	58	2.230	11:54:58	11:54:58	0	+0	6°		
29	Tmp	59	2.880	11:56:35	11:57:00	0	+22	7°		
30	Tmp	60	5.550	12:00:54	12:00:54	0	+0	7°		
31	Tmp	64	2.520	12:14:48	12:14:51	0	+0	6°		
32	Tmp	65	4.770	12:17:54	12:17:58	0	+1	6°		
33	Tmp	67	6.830	12:21:36	12:21:56	0	+17	5°		
34	Tmp	69	7.380	12:22:52	12:23:16	0	+21	6°		
35	Tmp	69	7.920	12:24:13	12:25:06	0	+50	5°		
36	Tmp	69	8.290	12:25:09	12:26:48	0	+96	5°		
37	Tmp	69	9.150	12:27:18	12:29:47	0	+146	5°		
38	Tmp	71	1.200	12:29:42	12:32:23	0	+158	6°		
39	Tmp	71	2.230	12:31:25	12:33:57	0	+149	6°		
40	Tmp	76	5.100	12:42:58	12:43:06	0	+5	6°		
41	Tmp	76	7.200	12:45:42	12:45:49	0	+4	6°		
42	Tmp	77	3.910	12:50:21	12:50:25	0	+1	6°		
43	Tmp	80	0.310	13:04:50	13:04:57	0	+4	6°		
44	Tmp	81	3.010	13:08:01	13:08:04	0	+0	6°		
45	Tmp	84	5.450	13:12:54	13:12:59	0	+2	6°		
46	Tmp	85	8.060	13:16:06	13:16:08	0	+0	6°		
47	Tmp	87	1.100	13:17:29	13:17:34	0	+2	6°		
48	Tmp	87	2.250	13:19:24	13:19:43	0	+16	6°		
49	Tmp	88	2.760	13:20:15	13:20:43	0	+25	6°		
50	Tmp	92	1.520	13:30:03	13:30:03	0	+0	6°		
51	Tmp	93	1.980	13:30:54	13:31:13	0	+16	6°		
52	Tmp	94	2.730	13:32:31	13:34:24	0	+110	6°		
53	Tmp	95	3.140	13:33:06	13:34:52	0	+103	6°		
54	Tmp	95	3.830	13:34:29	13:36:36	0	+124	6°		
55	Tmp	97	4.650	13:35:44	13:37:46	0	+119	5°		
56	Tmp	100	0.650	13:41:28	13:41:35	0	+4	5°		
57	Tmp	101	1.030	13:42:04	13:42:21	0	+14	5°		
58	Tmp	101	1.800	13:43:02	13:43:19	0	+14	5°		
59	Tmp	101	3.670	13:45:22	13:45:32	0	+7	5°		
60	Tmp	102	6.100	13:48:00	13:48:01	0	+0	5°		

Etapa B	Num	43	Pen	0	PCZ	7	Total PP	1230	PG	16
---------	-----	----	-----	---	-----	---	----------	------	----	----

N u m	72	Equipe	72 / Ladislau Freitas (Iau)					
		Patrocinador						
		Cat / NL / Largada	JUNIOR / 31 / 09:15:00	Cidade	Ssa			

PC	Tp	Trc	KmPC	Ideal	Passagem	Pen	Pontos	Col
1	Tmp	4	0.420	09:32:23	09:32:39	0	+13	6°
2	Tmp	5	3.520	09:36:16	09:36:30	0	+11	2°
3	Tmp	9	0.900	09:37:53	09:38:19	0	+23	3°
4	Tmp	11	1.950	09:39:30	09:39:49	0	+16	4°
5	Tmp	14	3.060	09:41:39	09:42:13	0	+31	4°
6	Tmp	18	1.990	09:51:26	09:51:39	0	+10	4°
8	Tmp	23	4.500	09:56:21	09:58:16	0	+112	4°
9	Tmp	23	4.900	09:57:16	09:59:36	0	+137	4°
10	Tmp	26	0.400	10:07:07	10:07:03	0	-3	4°
11	Tmp	28	5.500	10:15:04	10:15:05	0	+0	4°
12	Tmp	30	2.200	10:19:13	10:19:14	0	+0	4°
16	Tmp	36	0.340	10:33:14	10:33:16	0	+0	4°
17	Tmp	36	2.270	10:35:46	10:36:06	0	+17	4°
18	Tmp	39	0.310	10:46:20	10:46:19	0	-0	4°
19	Tmp	42	2.320	10:49:36	10:49:58	0	+19	4°
20	Tmp	46	2.340	10:57:12	10:57:11	0	-0	4°
21	Tmp	46	3.050	10:58:19	10:58:19	0	+0	4°
22	Tmp	47	5.930	11:02:05	11:02:04	0	-0	3°
23	Tmp	49	7.360	11:04:06	11:04:11	0	+2	3°
24	Tmp	51	8.250	11:05:47	11:06:28	0	+38	3°
25	Tmp	51	9.380	11:07:24	11:07:47	0	+20	3°
26	Tmp	54	6.500	11:15:12	11:15:12	0	+0	3°
27	Tmp	54	6.720	11:15:38	11:15:35	0	-0	3°

PC	Tp	Trc	KmPC	Ideal	Passagem	Pen	Pontos	Col
Num 72	A	3°	PG 20	B	4°	PG 18	Tot PG 38	Col. 2°



Moto Clube / Princesa Off Road / Zaitec	
.	

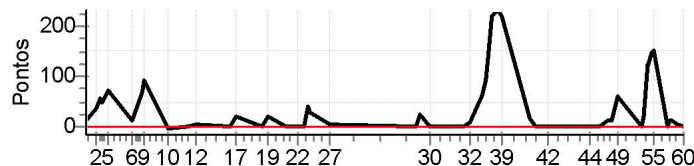
Etapa A	Num	72	Pen	0	PCZ	9	Total PP	452	PG	20
28	Tmp	58	2.230	11:51:58	11:51:57	0	-0	11°		
29	Tmp	59	2.880	11:53:35	11:54:01	0	+23	9°		
30	Tmp	60	5.550	11:57:54	11:57:55	0	+0	9°		
31	Tmp	64	2.520	12:11:48	12:11:49	0	+0	8°		
32	Tmp	65	4.770	12:14:54	12:14:56	0	+0	5°		
33	Tmp	67	6.830	12:18:36	12:18:46	0	+7	4°		
34	Tmp	69	7.380	12:19:52	12:20:20	0	+25	5°		
35	Tmp	69	7.920	12:21:13	12:22:15	0	+59	6°		
36	Tmp	69	8.290	12:22:09	12:23:58	0	+106	6°		
37	Tmp	69	9.150	12:24:18	12:26:37	0	+136	6°		
38	Tmp	71	1.200	12:26:42	12:29:05	0	+140	5°		
39	Tmp	71	2.230	12:28:25	12:30:35	0	+127	4°		
40	Tmp	76	5.100	12:39:58	12:40:07	0	+6	4°		
41	Tmp	76	7.200	12:42:42	12:42:39	0	-0	4°		
42	Tmp	77	3.910	12:47:21	12:47:19	0	-0	4°		
43	Tmp	80	0.310	13:01:50	13:01:58	0	+5	4°		
44	Tmp	81	3.010	13:05:01	13:05:03	0	+0	4°		
45	Tmp	84	5.450	13:09:54	13:09:59	0	+2	4°		
46	Tmp	85	8.060	13:13:06	13:13:15	0	+6	4°		
47	Tmp	87	1.100	13:14:29	13:14:28	0	-0	4°		
48	Tmp	87	2.250	13:16:24	13:16:42	0	+15	4°		
49	Tmp	88	2.760	13:17:15	13:17:56	0	+38	5°		
50	Tmp	92	1.520	13:27:03	13:27:00	0	-0	5°		
51	Tmp	93	1.980	13:27:54	13:28:08	0	+11	5°		
52	Tmp	94	2.730	13:29:31	13:31:05	0	+91	5°		
53	Tmp	95	3.140	13:30:06	13:31:31	0	+82	5°		
54	Tmp	95	3.830	13:31:29	13:33:13	0	+101	5°		
55	Tmp	97	4.650	13:32:44	13:34:35	0	+108	4°		
56	Tmp	100	0.650	13:38:28	13:38:32	0	+1	4°		
57	Tmp	101	1.030	13:39:04	13:39:21	0	+14	4°		
58	Tmp	101	1.800	13:40:02	13:40:25	0	+20	4°		
59	Tmp	101	3.670	13:42:22	13:42:35	0	+10	4°		
60	Tmp	102	6.100	13:45:00	13:44:59	0	-0	4°		

Etapa B	Num	72	Pen	0	PCZ	10	Total PP	1133	PG	18
---------	-----	----	-----	---	-----	----	----------	------	----	----

N u m	76	Equipe	76 / Rui Luchese (rui do Trem)					
		Patrocinador						
		Cat / NL / Largada	JUNIOR / 36 / 09:17:30	Cidade	Ssa			

PC	TP	TRC	KmPC	Ideal	Passagem	Pen	Pontos	Col
1	Tmp	4	0.420	09:34:53	09:35:10	0	+14	8°
2	Tmp	5	3.520	09:38:46	09:39:25	0	+36	11°
3	Tmp	9	0.900	09:40:23	09:41:23	0	+57	11°
4	Tmp	11	1.950	09:42:00	09:42:51	0	+48	11°
5	Tmp	14	3.060	09:44:09	09:45:25	0	+73	11°
6	Tmp	18	1.990	09:53:56	09:54:11	0	+12	11°
8	Tmp	23	4.500	09:58:51	10:00:02	0	+68	11°
9	Tmp	23	4.900	09:59:46	10:01:23	0	+94	6°
10	Tmp	26	0.400	10:09:37	10:09:33	0	-3	6°
11	Tmp	28	5.500	10:17:34	10:17:38	0	+1	6°
12	Tmp	30	2.200	10:21:43	10:21:51	0	+5	6°
16	Tmp	36	0.340	10:35:44	10:35:48	0	+1	6°
17	Tmp	36	2.270	10:38:16	10:38:40	0	+21	6°
18	Tmp	39	0.310	10:48:50	10:48:50	0	+0	6°
19	Tmp	42	2.320	10:52:06	10:52:29	0	+20	6°
20	Tmp	46	2.340	10:59:42	10:59:41	0	-0	6°
21	Tmp	46	3.050	11:00:49	11:00:52	0	+0	6°
22	Tmp	47	5.930	11:04:35	11:04:36	0	+0	6°
23	Tmp	49	7.360	11:06:36	11:06:40	0	+1	6°
24	Tmp	51	8.250	11:08:17	11:09:00	0	+40	6°
25	Tmp	51	9.380	11:09:54	11:10:25	0	+28	6°
26	Tmp	54	6.500	11:17:42	11:17:48	0	+3	6°
27	Tmp	54	6.720	11:18:08	11:18:15	0	+4	6°

PC	TP	TRC	KmPC	Ideal	Passagem	Pen	Pontos	Col
Num 76	A	6°	PG 15	B	9°	PG 12	Tot PG 27	Col. 7°



Moto Clube / Princesa Off Road / Zaitec	
.	

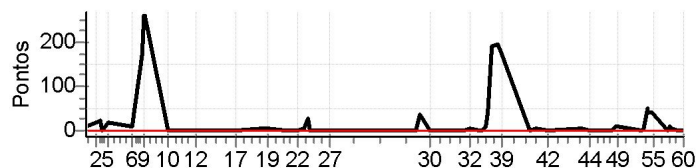
Etapa A	Num	76	Pen	0	PCZ	4	Total PP	529	PG	15
28	Tmp	58	2.230	11:54:28	11:54:29	0	+0	7°		
29	Tmp	59	2.880	11:56:05	11:56:31	0	+23	8°		
30	Tmp	60	5.550	12:00:24	12:00:24	0	+0	8°		
31	Tmp	64	2.520	12:14:18	12:14:19	0	+0	7°		
32	Tmp	65	4.770	12:17:24	12:17:37	0	+10	8°		
33	Tmp	67	6.830	12:21:06	12:22:03	0	+54	10°		
34	Tmp	69	7.380	12:22:22	12:23:27	0	+62	10°		
35	Tmp	69	7.920	12:23:43	12:25:17	0	+91	10°		
36	Tmp	69	8.290	12:24:39	12:26:56	0	+134	9°		
37	Tmp	69	9.150	12:26:48	12:30:32	0	+221	9°		
38	Tmp	71	1.200	12:29:12	12:33:07	0	+232	9°		
39	Tmp	71	2.230	12:30:55	12:34:38	0	+220	10°		
40	Tmp	76	5.100	12:42:28	12:42:49	0	+18	10°		
41	Tmp	76	7.200	12:45:12	12:45:17	0	+2	10°		
42	Tmp	77	3.910	12:49:51	12:49:52	0	+0	10°		
43	Tmp	80	0.310	13:04:20	13:04:25	0	+2	10°		
44	Tmp	81	3.010	13:07:31	13:07:32	0	+0	10°		
45	Tmp	84	5.450	13:12:24	13:12:26	0	+0	10°		
46	Tmp	85	8.060	13:15:36	13:15:53	0	+14	10°		
47	Tmp	87	1.100	13:16:59	13:17:14	0	+12	10°		
48	Tmp	87	2.250	13:18:54	13:19:40	0	+43	10°		
49	Tmp	88	2.760	13:19:45	13:20:47	0	+59	10°		
50	Tmp	92	1.520	13:29:33	13:29:33	0	+0	10°		
51	Tmp	93	1.980	13:30:24	13:30:48	0	+21	10°		
52	Tmp	94	2.730	13:32:01	13:34:09	0	+125	10°		
53	Tmp	95	3.140	13:32:36	13:34:38	0	+119	10°		
54	Tmp	95	3.830	13:33:59	13:36:32	0	+150	10°		
55	Tmp	97	4.650	13:35:14	13:37:48	0	+151	9°		
56	Tmp	100	0.650	13:40:58	13:41:01	0	+0	9°		
57	Tmp	101	1.030	13:41:34	13:41:49	0	+12	9°		
58	Tmp	101	1.800	13:42:32	13:42:48	0	+13	9°		
59	Tmp	101	3.670	13:44:52	13:45:00	0	+5	9°		
60	Tmp	102	6.100	13:47:30	13:47:27	0	-0	9°		

Etapa B	Num	76	Pen	0	PCZ	9	Total PP	1793	PG	12
---------	-----	----	-----	---	-----	---	----------	------	----	----

N u m	77	Equipe	77 / Yuri de Araujo (pau de Lodo)						
		Patrocinador							
		Cat / NL / Largada	JUNIOR / 35 / 09:17:00	Cidade	Feira				

PC	Tp	Trc	KmPC	Ideal	Passagem	Pen	Pontos	Col
1	Tmp	4	0.420	09:34:23	09:34:36	0	+10	3°
2	Tmp	5	3.520	09:38:16	09:38:36	0	+17	4°
3	Tmp	9	0.900	09:39:53	09:40:19	0	+23	4°
4	Tmp	11	1.950	09:41:30	09:41:35	0	+2	3°
5	Tmp	14	3.060	09:43:39	09:44:00	0	+18	2°
6	Tmp	18	1.990	09:53:26	09:53:36	0	+7	2°
8	Tmp	23	4.500	09:58:21	10:01:15	0	+171	6°
9	Tmp	23	4.900	09:59:16	10:03:46	0	+267	10°
10	Tmp	26	0.400	10:09:07	10:09:08	0	+0	10°
11	Tmp	28	5.500	10:17:04	10:17:03	0	-0	10°
12	Tmp	30	2.200	10:21:13	10:21:14	0	+0	10°
16	Tmp	36	0.340	10:35:14	10:35:17	0	+0	10°
17	Tmp	36	2.270	10:37:46	10:37:51	0	+2	10°
18	Tmp	39	0.310	10:48:20	10:48:28	0	+5	10°
19	Tmp	42	2.320	10:51:36	10:51:45	0	+6	9°
20	Tmp	46	2.340	10:59:12	10:59:16	0	+1	10°
21	Tmp	46	3.050	11:00:19	11:00:21	0	+0	10°
22	Tmp	47	5.930	11:04:05	11:04:06	0	+0	10°
23	Tmp	49	7.360	11:06:06	11:06:12	0	+3	10°
24	Tmp	51	8.250	11:07:47	11:08:16	0	+26	9°
25	Tmp	51	9.380	11:09:24	11:09:27	0	+0	9°
26	Tmp	54	6.500	11:17:12	11:17:13	0	+0	9°
27	Tmp	54	6.720	11:17:38	11:17:39	0	+0	9°

PC	Tp	Trc	KmPC	Ideal	Passagem	Pen	Pontos	Col
Num 77	A	9°	PG 12	B	2°	PG 22	Tot PG 34	Col. 5°

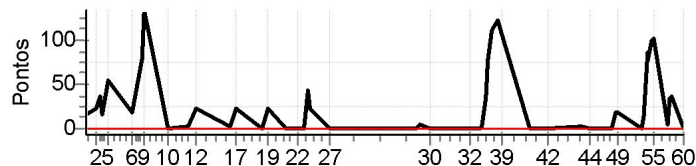


Moto Clube / Princesa Off Road / Zaitec

Etapa A	Num	77	Pen	0	PCZ	9	Total PP	558	PG	12
28	Tmp	58	2.230	11:53:58	11:53:56	0	-0	8°		
29	Tmp	59	2.880	11:55:35	11:56:13	0	+35	11°		
30	Tmp	60	5.550	11:59:54	11:59:52	0	-0	11°		
31	Tmp	64	2.520	12:13:48	12:13:48	0	+0	10°		
32	Tmp	65	4.770	12:16:54	12:17:03	0	+6	10°		
33	Tmp	67	6.830	12:20:36	12:20:34	0	-0	6°		
34	Tmp	69	7.380	12:21:52	12:21:54	0	+0	4°		
35	Tmp	69	7.920	12:23:13	12:23:27	0	+11	2°		
36	Tmp	69	8.290	12:24:09	12:24:51	0	+39	1°		
37	Tmp	69	9.150	12:26:18	12:29:33	0	+192	3°		
38	Tmp	71	1.200	12:28:42	12:32:00	0	+195	4°		
39	Tmp	71	2.230	12:30:25	12:33:19	0	+171	5°		
40	Tmp	76	5.100	12:41:58	12:42:03	0	+2	5°		
41	Tmp	76	7.200	12:44:42	12:44:50	0	+5	5°		
42	Tmp	77	3.910	12:49:21	12:49:22	0	+0	5°		
43	Tmp	80	0.310	13:03:50	13:03:56	0	+3	5°		
44	Tmp	81	3.010	13:07:01	13:07:03	0	+0	5°		
45	Tmp	84	5.450	13:11:54	13:11:54	0	+0	5°		
46	Tmp	85	8.060	13:15:06	13:15:03	0	-0	5°		
47	Tmp	87	1.100	13:16:29	13:16:29	0	+0	5°		
48	Tmp	87	2.250	13:18:24	13:18:36	0	+9	5°		
49	Tmp	88	2.760	13:19:15	13:19:29	0	+11	4°		
50	Tmp	92	1.520	13:29:03	13:29:01	0	-0	4°		
51	Tmp	93	1.980	13:29:54	13:30:03	0	+6	4°		
52	Tmp	94	2.730	13:31:31	13:32:24	0	+50	4°		
53	Tmp	95	3.140	13:32:06	13:32:49	0	+40	3°		
54	Tmp	95	3.830	13:33:29	13:34:12	0	+40	3°		
55	Tmp	97	4.650	13:34:44	13:35:25	0	+38	2°		
56	Tmp	100	0.650	13:40:28	13:40:30	0	+0	2°		
57	Tmp	101	1.030	13:41:04	13:41:15	0	+8	2°		
58	Tmp	101	1.800	13:42:02	13:42:09	0	+4	2°		
59	Tmp	101	3.670	13:44:22	13:44:26	0	+1	2°		
60	Tmp	102	6.100	13:47:00	13:46:58	0	-0	2°		
Etapa B	Num	77	Pen	0	PCZ	13	Total PP	866	PG	22

N u m	129	Equipe	129 / Evanilton Reis (vani)						
		Patrocinador							
		Cat / NL / Largada	JUNIOR / 40 / 09:19:30	Cidade	Camaçari				

PC	Tp	Trc	KmPC	Ideal	Passagem	Pen	Pontos	Col	PC	Tp	Trc	KmPC	Ideal	Passagem	Pen	Pontos	Col
1	Tmp	4	0.420	09:36:53	09:37:11	0	+15	9°	Num 129	A	5°	PG 16	B	3°	PG 20	Tot PG 36	Col. 3°
2	Tmp	5	3.520	09:40:46	09:41:11	0	+22	9°									
3	Tmp	9	0.900	09:42:23	09:43:02	0	+36	9°									
4	Tmp	11	1.950	09:44:00	09:44:19	0	+16	7°									
5	Tmp	14	3.060	09:46:09	09:47:07	0	+55	9°									
6	Tmp	18	1.990	09:55:56	09:56:16	0	+17	9°									
8	Tmp	23	4.500	10:00:51	10:02:13	0	+79	5°									
9	Tmp	23	4.900	10:01:46	10:04:02	0	+133	5°									
10	Tmp	26	0.400	10:11:37	10:11:38	0	+0	5°									
11	Tmp	28	5.500	10:19:34	10:19:40	0	+3	5°									
12	Tmp	30	2.200	10:23:43	10:24:08	0	+22	5°									
16	Tmp	36	0.340	10:37:44	10:37:49	0	+2	5°									
17	Tmp	36	2.270	10:40:16	10:40:41	0	+22	5°									
18	Tmp	39	0.310	10:50:50	10:50:54	0	+1	5°									
19	Tmp	42	2.320	10:54:06	10:54:32	0	+23	5°									
20	Tmp	46	2.340	11:01:42	11:01:43	0	+0	5°									
21	Tmp	46	3.050	11:02:49	11:02:51	0	+0	5°									
22	Tmp	47	5.930	11:06:35	11:06:38	0	+0	5°									
23	Tmp	49	7.360	11:08:36	11:08:39	0	+0	5°									
24	Tmp	51	8.250	11:10:17	11:11:03	0	+43	5°									
25	Tmp	51	9.380	11:11:54	11:12:20	0	+23	5°									
26	Tmp	54	6.500	11:19:42	11:19:45	0	+0	5°									
27	Tmp	54	6.720	11:20:08	11:20:11	0	+0	5°									



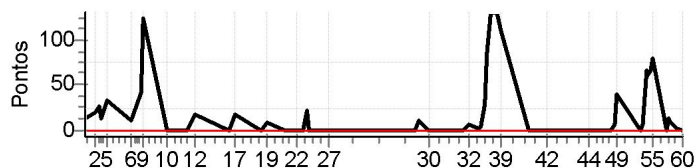
Moto Clube / Princesa Off Road / Zaitec

Etapa A	Num	129	Pen	0	PCZ	7	Total PP	512	PG	16
28	Tmp	58	2.230	11:56:28	11:56:29	0	+0	4°		
29	Tmp	59	2.880	11:58:05	11:58:13	0	+5	3°		
30	Tmp	60	5.550	12:02:24	12:02:25	0	+0	3°		
31	Tmp	64	2.520	12:16:18	12:16:19	0	+0	2°		
32	Tmp	65	4.770	12:19:24	12:19:27	0	+0	2°		
33	Tmp	67	6.830	12:23:06	12:23:07	0	+0	2°		
34	Tmp	69	7.380	12:24:22	12:24:27	0	+2	1°		
35	Tmp	69	7.920	12:25:43	12:26:20	0	+34	1°		
36	Tmp	69	8.290	12:26:39	12:27:58	0	+76	2°		
37	Tmp	69	9.150	12:28:48	12:30:42	0	+111	1°		
38	Tmp	71	1.200	12:31:12	12:33:17	0	+122	1°		
39	Tmp	71	2.230	12:32:55	12:34:45	0	+107	1°		
40	Tmp	76	5.100	12:44:28	12:44:32	0	+1	1°		
41	Tmp	76	7.200	12:47:12	12:47:16	0	+1	1°		
42	Tmp	77	3.910	12:51:51	12:51:51	0	+0	1°		
43	Tmp	80	0.310	13:06:20	13:06:25	0	+2	1°		
44	Tmp	81	3.010	13:09:31	13:09:33	0	+0	1°		
45	Tmp	84	5.450	13:14:24	13:14:28	0	+1	1°		
46	Tmp	85	8.060	13:17:36	13:17:38	0	+0	1°		
47	Tmp	87	1.100	13:18:59	13:19:00	0	+0	1°		
48	Tmp	87	2.250	13:20:54	13:21:14	0	+17	1°		
49	Tmp	88	2.760	13:21:45	13:22:07	0	+19	1°		
50	Tmp	92	1.520	13:31:33	13:31:31	0	-0	1°		
51	Tmp	93	1.980	13:32:24	13:32:40	0	+13	1°		
52	Tmp	94	2.730	13:34:01	13:35:30	0	+86	1°		
53	Tmp	95	3.140	13:34:36	13:35:56	0	+77	1°		
54	Tmp	95	3.830	13:35:59	13:37:41	0	+99	2°		
55	Tmp	97	4.650	13:37:14	13:38:58	0	+101	3°		
56	Tmp	100	0.650	13:42:58	13:43:06	0	+5	3°		
57	Tmp	101	1.030	13:43:34	13:44:11	0	+34	3°		
58	Tmp	101	1.800	13:44:32	13:45:11	0	+36	3°		
59	Tmp	101	3.670	13:46:52	13:47:13	0	+18	3°		
60	Tmp	102	6.100	13:49:30	13:49:30	0	+0	3°		
Etapa B	Num	129	Pen	0	PCZ	11	Total PP	967	PG	20

N u m	170	Equipe	170 / Gildasio Moreira (fosco)					
		Patrocinador						
		Cat / NL / Largada	JUNIOR / 42 / 09:20:30			Cidade	Feira	

PC	Tp	Trc	KmPC	Ideal	Passagem	Pen	Pontos	Col
1	Tmp	4	0.420	09:37:53	09:38:10	0	+14	7°
2	Tmp	5	3.520	09:41:46	09:42:08	0	+19	6°
3	Tmp	9	0.900	09:43:23	09:43:53	0	+27	5°
4	Tmp	11	1.950	09:45:00	09:45:17	0	+14	5°
5	Tmp	14	3.060	09:47:09	09:47:45	0	+33	5°
6	Tmp	18	1.990	09:56:56	09:57:10	0	+11	5°
8	Tmp	23	4.500	10:01:51	10:02:37	0	+43	2°
9	Tmp	23	4.900	10:02:46	10:04:54	0	+125	2°
10	Tmp	26	0.400	10:12:37	10:12:34	0	-0	2°
11	Tmp	28	5.500	10:20:34	10:20:34	0	+0	2°
12	Tmp	30	2.200	10:24:43	10:25:04	0	+18	2°
16	Tmp	36	0.340	10:38:44	10:38:47	0	+0	2°
17	Tmp	36	2.270	10:41:16	10:41:36	0	+17	2°
18	Tmp	39	0.310	10:51:50	10:51:53	0	+0	2°
19	Tmp	42	2.320	10:55:06	10:55:17	0	+8	2°
20	Tmp	46	2.340	11:02:42	11:02:42	0	+0	2°
21	Tmp	46	3.050	11:03:49	11:03:48	0	-0	2°
22	Tmp	47	5.930	11:07:35	11:07:37	0	+0	2°
23	Tmp	49	7.360	11:09:36	11:09:40	0	+1	2°
24	Tmp	51	8.250	11:11:17	11:11:42	0	+22	2°
25	Tmp	51	9.380	11:12:54	11:12:52	0	-0	2°
26	Tmp	54	6.500	11:20:42	11:20:43	0	+0	2°
27	Tmp	54	6.720	11:21:08	11:21:10	0	+0	2°

PC	Tp	Trc	KmPC	Ideal	Passagem	Pen	Pontos	Col
Num 170	A	2°	PG 22	B	1°	PG 25	Tot PG 47	Col. 1°



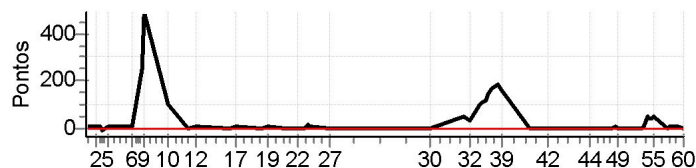
Moto Clube / Princesa Off Road / Zaitec	
.	

Etapa A	Num	170	Pen	0	PCZ	10	Total PP	352	PG	22
28	Tmp	58	2.230	11:57:28	11:57:25	0	-0	2°		
29	Tmp	59	2.880	11:59:05	11:59:19	0	+11	5°		
30	Tmp	60	5.550	12:03:24	12:03:26	0	+0	5°		
31	Tmp	64	2.520	12:17:18	12:17:20	0	+0	4°		
32	Tmp	65	4.770	12:20:24	12:20:34	0	+7	4°		
33	Tmp	67	6.830	12:24:06	12:24:11	0	+2	3°		
34	Tmp	69	7.380	12:25:22	12:25:30	0	+5	3°		
35	Tmp	69	7.920	12:26:43	12:27:15	0	+29	3°		
36	Tmp	69	8.290	12:27:39	12:29:07	0	+85	3°		
37	Tmp	69	9.150	12:29:48	12:32:02	0	+131	2°		
38	Tmp	71	1.200	12:32:12	12:34:25	0	+130	2°		
39	Tmp	71	2.230	12:33:55	12:35:49	0	+111	2°		
40	Tmp	76	5.100	12:45:28	12:45:30	0	+0	2°		
41	Tmp	76	7.200	12:48:12	12:48:14	0	+0	2°		
42	Tmp	77	3.910	12:52:51	12:52:51	0	+0	2°		
43	Tmp	80	0.310	13:07:20	13:07:20	0	+0	2°		
44	Tmp	81	3.010	13:10:31	13:10:35	0	+1	2°		
45	Tmp	84	5.450	13:15:24	13:15:27	0	+0	2°		
46	Tmp	85	8.060	13:18:36	13:18:34	0	-0	2°		
47	Tmp	87	1.100	13:19:59	13:20:00	0	+0	2°		
48	Tmp	87	2.250	13:21:54	13:22:04	0	+7	2°		
49	Tmp	88	2.760	13:22:45	13:23:27	0	+39	2°		
50	Tmp	92	1.520	13:32:33	13:32:31	0	-0	2°		
51	Tmp	93	1.980	13:33:24	13:33:33	0	+6	2°		
52	Tmp	94	2.730	13:35:01	13:36:11	0	+67	2°		
53	Tmp	95	3.140	13:35:36	13:36:38	0	+59	2°		
54	Tmp	95	3.830	13:36:59	13:38:09	0	+67	1°		
55	Tmp	97	4.650	13:38:14	13:39:37	0	+80	1°		
56	Tmp	100	0.650	13:43:58	13:44:02	0	+1	1°		
57	Tmp	101	1.030	13:44:34	13:44:50	0	+13	1°		
58	Tmp	101	1.800	13:45:32	13:45:44	0	+9	1°		
59	Tmp	101	3.670	13:47:52	13:47:57	0	+2	1°		
60	Tmp	102	6.100	13:50:30	13:50:32	0	+0	1°		
Etapa B	Num	170	Pen	0	PCZ	12	Total PP	862	PG	25

N u m	192	Equipe	192 / Kaio Nascimento (bagual)						
		Patrocinador							
		Cat / NL / Largada	JUNIOR / 43 / 09:21:00	Cidade	Itaberaba				

PC	Tp	Trc	KmPC	Ideal	Passagem	Pen	Pontos	Col
1	Tmp	4	0.420	09:38:23	09:38:33	0	+7	1°
2	Tmp	5	3.520	09:42:16	09:42:26	0	+7	1°
3	Tmp	9	0.900	09:43:53	09:44:02	0	+6	1°
4	Tmp	11	1.950	09:45:30	09:45:23	0	-12	1°
5	Tmp	14	3.060	09:47:39	09:47:48	0	+6	1°
6	Tmp	18	1.990	09:57:26	09:57:30	0	+1	1°
8	Tmp	23	4.500	10:02:21	10:06:37	0	+253	10°
9	Tmp	23	4.900	10:03:16	10:11:29	0	+490	11°
10	Tmp	26	0.400	10:13:07	10:14:46	0	+96	11°
11	Tmp	28	5.500	10:21:04	10:21:05	0	+0	11°
12	Tmp	30	2.200	10:25:13	10:25:18	0	+2	11°
16	Tmp	36	0.340	10:39:14	10:39:15	0	+0	11°
17	Tmp	36	2.270	10:41:46	10:41:53	0	+4	11°
18	Tmp	39	0.310	10:52:20	10:52:17	0	-0	11°
19	Tmp	42	2.320	10:55:36	10:55:44	0	+5	11°
20	Tmp	46	2.340	11:03:12	11:03:08	0	-3	11°
21	Tmp	46	3.050	11:04:19	11:04:19	0	+0	11°
22	Tmp	47	5.930	11:08:05	11:08:03	0	-0	11°
23	Tmp	49	7.360	11:10:06	11:10:08	0	+0	11°
24	Tmp	51	8.250	11:11:47	11:12:06	0	+16	11°
25	Tmp	51	9.380	11:13:24	11:13:29	0	+2	11°
26	Tmp	54	6.500	11:21:12	11:21:12	0	+0	11°
27	Tmp	54	6.720	11:21:38	11:21:36	0	-0	11°

PC	Tp	Trc	KmPC	Ideal	Passagem	Pen	Pontos	Col
Num 192	A	11°	PG 10	B	6°	PG 15	Tot PG 25	Col. 10°



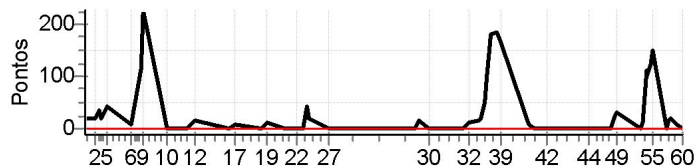
Moto Clube / Princesa Off Road / Zaitec

Etapa A	Num	192	Pen	0	PCZ	8	Total PP	910	PG	10
28	Tmp	58	2.230	11:57:58	11:57:56	0	-0	1°		
29	Tmp	59	2.880	11:59:35	11:59:34	0	-0	1°		
30	Tmp	60	5.550	12:03:54	12:03:53	0	-0	1°		
31	Tmp	64	2.520	12:17:48	12:18:39	0	+48	11°		
32	Tmp	65	4.770	12:20:54	12:21:28	0	+31	11°		
33	Tmp	67	6.830	12:24:36	12:26:21	0	+102	11°		
34	Tmp	69	7.380	12:25:52	12:27:42	0	+107	11°		
35	Tmp	69	7.920	12:27:13	12:29:11	0	+115	11°		
36	Tmp	69	8.290	12:28:09	12:30:32	0	+140	11°		
37	Tmp	69	9.150	12:30:18	12:33:10	0	+169	11°		
38	Tmp	71	1.200	12:32:42	12:35:45	0	+180	10°		
39	Tmp	71	2.230	12:34:25	12:37:02	0	+154	9°		
40	Tmp	76	5.100	12:45:58	12:45:58	0	+0	9°		
41	Tmp	76	7.200	12:48:42	12:48:44	0	+0	9°		
42	Tmp	77	3.910	12:53:21	12:53:18	0	-0	9°		
43	Tmp	80	0.310	13:07:50	13:07:51	0	+0	9°		
44	Tmp	81	3.010	13:11:01	13:11:04	0	+0	9°		
45	Tmp	84	5.450	13:15:54	13:15:57	0	+0	9°		
46	Tmp	85	8.060	13:19:06	13:19:06	0	+0	9°		
47	Tmp	87	1.100	13:20:29	13:20:30	0	+0	9°		
48	Tmp	87	2.250	13:22:24	13:22:31	0	+4	9°		
49	Tmp	88	2.760	13:23:15	13:23:18	0	+0	9°		
50	Tmp	92	1.520	13:33:03	13:33:02	0	-0	9°		
51	Tmp	93	1.980	13:33:54	13:34:03	0	+6	9°		
52	Tmp	94	2.730	13:35:31	13:36:23	0	+49	9°		
53	Tmp	95	3.140	13:36:06	13:36:47	0	+38	8°		
54	Tmp	95	3.830	13:37:29	13:38:09	0	+37	8°		
55	Tmp	97	4.650	13:38:44	13:39:36	0	+49	6°		
56	Tmp	100	0.650	13:44:28	13:44:30	0	+0	6°		
57	Tmp	101	1.030	13:45:04	13:45:12	0	+5	6°		
58	Tmp	101	1.800	13:46:02	13:46:10	0	+5	6°		
59	Tmp	101	3.670	13:48:22	13:48:28	0	+3	6°		
60	Tmp	102	6.100	13:51:00	13:51:03	0	+0	6°		
Etapa B	Num	192	Pen	0	PCZ	15	Total PP	1242	PG	15

N u m	200	Equipe	200 / Sergio Barreto (concon)					
		Patrocinador						
		Cat / NL / Largada	JUNIOR / 41 / 09:20:00			Cidade	Ssa	

PC	Tp	Trc	KmPC	Ideal	Passagem	Pen	Pontos	Col
1	Tmp	4	0.420	09:37:23	09:37:44	0	+18	11°
2	Tmp	5	3.520	09:41:16	09:41:40	0	+21	10°
3	Tmp	9	0.900	09:42:53	09:43:32	0	+36	10°
4	Tmp	11	1.950	09:44:30	09:44:53	0	+20	9°
5	Tmp	14	3.060	09:46:39	09:47:24	0	+42	7°
6	Tmp	18	1.990	09:56:26	09:56:38	0	+9	7°
8	Tmp	23	4.500	10:01:21	10:03:21	0	+117	9°
9	Tmp	23	4.900	10:02:16	10:06:07	0	+228	9°
10	Tmp	26	0.400	10:12:07	10:12:05	0	-0	9°
11	Tmp	28	5.500	10:20:04	10:20:05	0	+0	9°
12	Tmp	30	2.200	10:24:13	10:24:32	0	+16	9°
16	Tmp	36	0.340	10:38:14	10:38:15	0	+0	9°
17	Tmp	36	2.270	10:40:46	10:40:56	0	+7	9°
18	Tmp	39	0.310	10:51:20	10:51:24	0	+1	9°
19	Tmp	42	2.320	10:54:36	10:54:52	0	+13	10°
20	Tmp	46	2.340	11:02:12	11:02:10	0	-0	9°
21	Tmp	46	3.050	11:03:19	11:03:17	0	-0	9°
22	Tmp	47	5.930	11:07:05	11:07:06	0	+0	9°
23	Tmp	49	7.360	11:09:06	11:09:08	0	+0	9°
24	Tmp	51	8.250	11:10:47	11:11:32	0	+42	10°
25	Tmp	51	9.380	11:12:24	11:12:45	0	+18	10°
26	Tmp	54	6.500	11:20:12	11:20:13	0	+0	10°
27	Tmp	54	6.720	11:20:38	11:20:38	0	+0	10°

PC	Tp	Trc	KmPC	Ideal	Passagem	Pen	Pontos	Col					
Num	200	A	10°	PG	11	B	7°	PG	14	Tot PG	25	Col.	9°



Moto Clube / Princesa Off Road / Zaitec	
.	

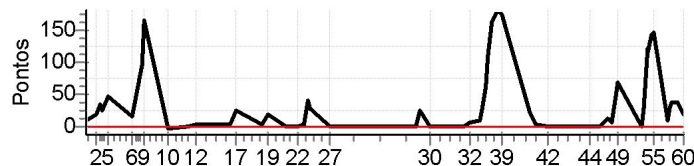
Etapa A	Num	200	Pen	0	PCZ	9	Total PP	588	PG	11
28	Tmp	58	2.230	11:56:58	11:56:58	0	+0	3°		
29	Tmp	59	2.880	11:58:35	11:58:54	0	+16	6°		
30	Tmp	60	5.550	12:02:54	12:02:54	0	+0	6°		
31	Tmp	64	2.520	12:16:48	12:16:49	0	+0	5°		
32	Tmp	65	4.770	12:19:54	12:20:09	0	+12	7°		
33	Tmp	67	6.830	12:23:36	12:23:56	0	+17	8°		
34	Tmp	69	7.380	12:24:52	12:25:16	0	+21	7°		
35	Tmp	69	7.920	12:26:13	12:27:08	0	+52	7°		
36	Tmp	69	8.290	12:27:09	12:28:54	0	+102	7°		
37	Tmp	69	9.150	12:29:18	12:32:24	0	+183	7°		
38	Tmp	71	1.200	12:31:42	12:34:50	0	+185	7°		
39	Tmp	71	2.230	12:33:25	12:36:16	0	+168	7°		
40	Tmp	76	5.100	12:44:58	12:45:10	0	+9	7°		
41	Tmp	76	7.200	12:47:42	12:47:41	0	-0	7°		
42	Tmp	77	3.910	12:52:21	12:52:22	0	+0	7°		
43	Tmp	80	0.310	13:06:50	13:06:54	0	+1	7°		
44	Tmp	81	3.010	13:10:01	13:10:01	0	+0	7°		
45	Tmp	84	5.450	13:14:54	13:14:54	0	+0	7°		
46	Tmp	85	8.060	13:18:06	13:18:05	0	-0	7°		
47	Tmp	87	1.100	13:19:29	13:19:29	0	+0	7°		
48	Tmp	87	2.250	13:21:24	13:21:52	0	+25	7°		
49	Tmp	88	2.760	13:22:15	13:22:49	0	+31	7°		
50	Tmp	92	1.520	13:32:03	13:32:00	0	-0	7°		
51	Tmp	93	1.980	13:32:54	13:33:10	0	+13	7°		
52	Tmp	94	2.730	13:34:31	13:36:28	0	+114	7°		
53	Tmp	95	3.140	13:35:06	13:36:51	0	+102	7°		
54	Tmp	95	3.830	13:36:29	13:38:37	0	+125	7°		
55	Tmp	97	4.650	13:37:44	13:40:18	0	+151	7°		
56	Tmp	100	0.650	13:43:28	13:43:32	0	+1	7°		
57	Tmp	101	1.030	13:44:04	13:44:24	0	+17	7°		
58	Tmp	101	1.800	13:45:02	13:45:23	0	+18	7°		
59	Tmp	101	3.670	13:47:22	13:47:31	0	+6	7°		
60	Tmp	102	6.100	13:50:00	13:50:00	0	+0	7°		

Etapa B	Num	200	Pen	0	PCZ	11	Total PP	1369	PG	14
---------	-----	-----	-----	---	-----	----	----------	------	----	----

N u m	209	Equipe	209 / Cristiano Chagas (meio Kilo)					
		Patrocinador						
		Cat / NL / Largada	JUNIOR / 32 / 09:15:30	Cidade	Feira			

PC	Tp	Trc	KmPC	Ideal	Passagem	Pen	Pontos	Col
1	Tmp	4	0.420	09:32:53	09:33:06	0	+10	4°
2	Tmp	5	3.520	09:36:46	09:37:07	0	+18	5°
3	Tmp	9	0.900	09:38:23	09:39:01	0	+35	6°
4	Tmp	11	1.950	09:40:00	09:40:29	0	+26	8°
5	Tmp	14	3.060	09:42:09	09:43:01	0	+49	8°
6	Tmp	18	1.990	09:51:56	09:52:14	0	+15	8°
8	Tmp	23	4.500	09:56:51	09:58:31	0	+97	7°
9	Tmp	23	4.900	09:57:46	10:00:35	0	+166	8°
10	Tmp	26	0.400	10:07:37	10:07:33	0	-3	8°
11	Tmp	28	5.500	10:15:34	10:15:38	0	+1	8°
12	Tmp	30	2.200	10:19:43	10:19:49	0	+3	8°
16	Tmp	36	0.340	10:33:44	10:33:49	0	+2	8°
17	Tmp	36	2.270	10:36:16	10:36:44	0	+25	8°
18	Tmp	39	0.310	10:46:50	10:46:55	0	+2	8°
19	Tmp	42	2.320	10:50:06	10:50:29	0	+20	8°
20	Tmp	46	2.340	10:57:42	10:57:44	0	+0	7°
21	Tmp	46	3.050	10:58:49	10:58:51	0	+0	7°
22	Tmp	47	5.930	11:02:35	11:02:38	0	+0	7°
23	Tmp	49	7.360	11:04:36	11:04:41	0	+2	7°
24	Tmp	51	8.250	11:06:17	11:07:00	0	+40	7°
25	Tmp	51	9.380	11:07:54	11:08:25	0	+28	8°
26	Tmp	54	6.500	11:15:42	11:15:42	0	+0	8°
27	Tmp	54	6.720	11:16:08	11:16:09	0	+0	8°

PC	Tp	Trc	KmPC	Ideal	Passagem	Pen	Pontos	Col					
Num	209	A	8°	PG	13	B	8°	PG	13	Tot PG	26	Col.	8°



Moto Clube / Princesa Off Road / Zaitec	
.	

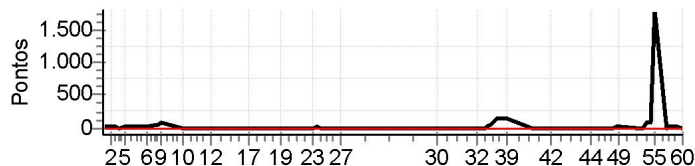
Etapa A	Num	209	Pen	0	PCZ	5	Total PP	542	PG	13
28	Tmp	58	2.230	11:52:28	11:52:29	0	+0	10°		
29	Tmp	59	2.880	11:54:05	11:54:34	0	+26	10°		
30	Tmp	60	5.550	11:58:24	11:58:22	0	-0	10°		
31	Tmp	64	2.520	12:12:18	12:12:20	0	+0	9°		
32	Tmp	65	4.770	12:15:24	12:15:35	0	+8	9°		
33	Tmp	67	6.830	12:19:06	12:19:18	0	+9	7°		
34	Tmp	69	7.380	12:20:22	12:20:51	0	+26	8°		
35	Tmp	69	7.920	12:21:43	12:22:50	0	+64	8°		
36	Tmp	69	8.290	12:22:39	12:24:31	0	+109	8°		
37	Tmp	69	9.150	12:24:48	12:27:35	0	+164	8°		
38	Tmp	71	1.200	12:27:12	12:30:18	0	+183	8°		
39	Tmp	71	2.230	12:28:55	12:31:55	0	+177	8°		
40	Tmp	76	5.100	12:40:28	12:40:52	0	+21	8°		
41	Tmp	76	7.200	12:43:12	12:43:17	0	+2	8°		
42	Tmp	77	3.910	12:47:51	12:47:52	0	+0	8°		
43	Tmp	80	0.310	13:02:20	13:02:24	0	+1	8°		
44	Tmp	81	3.010	13:05:31	13:05:33	0	+0	8°		
45	Tmp	84	5.450	13:10:24	13:10:26	0	+0	8°		
46	Tmp	85	8.060	13:13:36	13:13:52	0	+13	8°		
47	Tmp	87	1.100	13:14:59	13:15:10	0	+8	8°		
48	Tmp	87	2.250	13:16:54	13:17:45	0	+48	8°		
49	Tmp	88	2.760	13:17:45	13:18:56	0	+68	8°		
50	Tmp	92	1.520	13:27:33	13:27:37	0	+1	8°		
51	Tmp	93	1.980	13:28:24	13:28:54	0	+27	8°		
52	Tmp	94	2.730	13:30:01	13:32:08	0	+124	8°		
53	Tmp	95	3.140	13:30:36	13:32:37	0	+118	9°		
54	Tmp	95	3.830	13:31:59	13:34:26	0	+144	9°		
55	Tmp	97	4.650	13:33:14	13:35:45	0	+148	8°		
56	Tmp	100	0.650	13:38:58	13:39:10	0	+9	8°		
57	Tmp	101	1.030	13:39:34	13:40:07	0	+30	8°		
58	Tmp	101	1.800	13:40:32	13:41:13	0	+38	8°		
59	Tmp	101	3.670	13:42:52	13:43:33	0	+38	8°		
60	Tmp	102	6.100	13:45:30	13:45:51	0	+18	8°		

Etapa B	Num	209	Pen	0	PCZ	6	Total PP	1622	PG	13
---------	-----	-----	-----	---	-----	---	----------	------	----	----

N u m	307	Equipe	307 / Valdirei Pimenta (valdirei)					
		Patrocinador						
		Cat / NL / Largada	JUNIOR / 33 / 09:16:00			Cidade	Ssa	

PC	TP	TRC	KmPC	Ideal	Passagem	Pen	Pontos	Col
1	Tmp	4	0.420	09:33:23	09:33:35	0	+9	2°
2	Tmp	5	3.520	09:37:16	09:37:35	0	+16	3°
3	Tmp	9	0.900	09:38:53	09:39:17	0	+21	2°
4	Tmp	11	1.950	09:40:30	09:40:36	0	+3	2°
5	Tmp	14	3.060	09:42:39	09:43:05	0	+23	3°
6	Tmp	18	1.990	09:52:26	09:52:36	0	+7	3°
8	Tmp	23	4.500	09:57:21	09:58:21	0	+57	1°
9	Tmp	23	4.900	09:58:16	09:59:38	0	+79	1°
10	Tmp	26	0.400	10:08:07	10:08:04	0	-0	1°
11	Tmp	28	5.500	10:16:04	10:16:01	0	-0	1°
12	Tmp	30	2.200	10:20:13	10:20:11	0	-0	1°
16	Tmp	36	0.340	10:34:14	10:34:15	0	+0	1°
17	Tmp	36	2.270	10:36:46	10:36:54	0	+5	1°
18	Tmp	39	0.310	10:47:20	10:47:14	0	-9	1°
19	Tmp	42	2.320	10:50:36	10:50:33	0	-0	1°
20	Tmp	46	2.340	10:58:12	10:58:11	0	-0	1°
21	Tmp	46	3.050	10:59:19	10:59:21	0	+0	1°
22	Tmp	47	5.930	11:03:05	11:03:05	0	+0	1°
23	Tmp	49	7.360	11:05:06	11:05:10	0	+1	1°
24	Tmp	51	8.250	11:06:47	11:07:15	0	+25	1°
25	Tmp	51	9.380	11:08:24	11:08:29	0	+2	1°
26	Tmp	54	6.500	11:16:12	11:16:13	0	+0	1°
27	Tmp	54	6.720	11:16:38	11:16:42	0	+1	1°

PC	TP	TRC	KmPC	Ideal	Passagem	Pen	Pontos	Col					
Num	307	A	1°	PG	25	B	11°	PG	10	Tot PG	35	Col.	4°



Moto Clube / Princesa Off Road / Zaitec	
.	

Etapa A	Num	307	Pen	0	PCZ	9	Total PP	258	PG	25
28	Tmp	58	2.230	11:52:58	11:52:57	0	-0	9°		
29	Tmp	59	2.880	11:54:35	11:54:36	0	+0	2°		
30	Tmp	60	5.550	11:58:54	11:58:52	0	-0	2°		
31	Tmp	64	2.520	12:12:48	12:12:49	0	+0	1°		
32	Tmp	65	4.770	12:15:54	12:15:55	0	+0	1°		
33	Tmp	67	6.830	12:19:36	12:19:36	0	+0	1°		
34	Tmp	69	7.380	12:20:52	12:21:15	0	+20	2°		
35	Tmp	69	7.920	12:22:13	12:22:58	0	+42	4°		
36	Tmp	69	8.290	12:23:09	12:24:31	0	+79	4°		
37	Tmp	69	9.150	12:25:18	12:27:59	0	+158	4°		
38	Tmp	71	1.200	12:27:42	12:30:20	0	+155	3°		
39	Tmp	71	2.230	12:29:25	12:31:48	0	+140	3°		
40	Tmp	76	5.100	12:40:58	12:40:59	0	+0	3°		
41	Tmp	76	7.200	12:43:42	12:43:49	0	+4	3°		
42	Tmp	77	3.910	12:48:21	12:48:21	0	+0	3°		
43	Tmp	80	0.310	13:02:50	13:02:49	0	-0	3°		
44	Tmp	81	3.010	13:06:01	13:06:02	0	+0	3°		
45	Tmp	84	5.450	13:10:54	13:10:57	0	+0	3°		
46	Tmp	85	8.060	13:14:06	13:14:07	0	+0	3°		
47	Tmp	87	1.100	13:15:29	13:15:32	0	+0	3°		
48	Tmp	87	2.250	13:17:24	13:17:45	0	+18	3°		
49	Tmp	88	2.760	13:18:15	13:18:40	0	+22	3°		
50	Tmp	92	1.520	13:28:03	13:28:02	0	-0	3°		
51	Tmp	93	1.980	13:28:54	13:29:01	0	+4	3°		
52	Tmp	94	2.730	13:30:31	13:31:58	0	+84	3°		
53	Tmp	95	3.140	13:31:06	13:32:20	0	+71	4°		
54	Tmp	95	3.830	13:32:29	13:33:46	0	+74	4°		
55	Tmp	97	4.650	13:33:44		0	+1800	11°		
56	Tmp	100	0.650	13:39:28	13:39:28	0	+0	11°		
57	Tmp	101	1.030	13:40:04	13:40:39	0	+32	11°		
58	Tmp	101	1.800	13:41:02	13:41:32	0	+27	11°		
59	Tmp	101	3.670	13:43:22	13:43:34	0	+9	11°		
60	Tmp	102	6.100	13:46:00	13:45:59	0	-0	11°		

Etapa B	Num	307	Pen	0	PCZ	16	Total PP	2739	PG	10
---------	-----	-----	-----	---	-----	----	----------	------	----	----