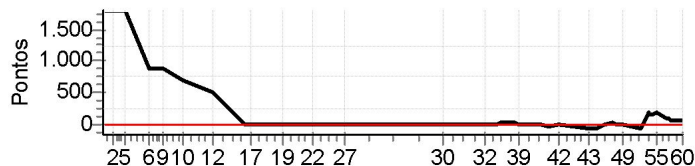


N u m	56	Equipe	56 / Lucas Elias (zebrinha)					
		Patrocinador						
		Cat / NL / Largada	ESTREANTES / 67 / 09:33:00	Cidade	Ssa			

PC	Tp	Trc	KmPC	Ideal	Passagem	Pen	Pontos	Col
1	Tmp	4	0.420	09:50:30		0	+1800	13°
2	Tmp	5	3.520	09:54:35		0	+1800	13°
3	Tmp	9	0.900	09:56:20		0	+1800	13°
4	Tmp	11	1.950	09:58:06		0	+1800	13°
5	Tmp	14	3.060	10:00:28		0	+1800	13°
6	Tmp	18	1.990	10:10:26	10:25:05	0	+876	13°
8	Tmp	23	4.500	10:15:54	10:30:57	0	+900	13°
9	Tmp	23	4.900	10:17:00	10:33:15	0	+900	13°
10	Tmp	26	0.400	10:26:05	10:38:00	0	+712	13°
11	Tmp	28	5.500	10:34:33	10:43:52	0	+556	13°
12	Tmp	30	2.200	10:39:03	10:47:37	0	+511	13°
16	Tmp	36	0.340	10:53:05	10:53:05	0	+0	13°
17	Tmp	36	2.270	10:55:43	10:55:48	0	+2	13°
18	Tmp	39	0.310	11:06:22	11:06:17	0	-6	13°
19	Tmp	42	2.320	11:09:53	11:09:59	0	+3	12°
20	Tmp	46	2.340	11:18:03	11:18:16	0	+10	12°
21	Tmp	46	3.050	11:19:14	11:19:11	0	-0	11°
22	Tmp	47	5.930	11:23:11	11:23:11	0	+0	10°
23	Tmp	49	7.360	11:25:18	11:25:20	0	+0	10°
24	Tmp	51	8.250	11:27:14	11:27:33	0	+16	10°
25	Tmp	51	9.380	11:29:01	11:28:57	0	-3	10°
26	Tmp	54	6.500	11:37:08	11:37:07	0	-0	10°
27	Tmp	54	6.720	11:37:34	11:37:32	0	-0	10°

PC	Tp	Trc	KmPC	Ideal	Passagem	Pen	Pontos	Col					
Num	56	A	10°	PG	11	B	4°	PG	18	Tot PG	29	Col.	7°



Moto Clube / Princesa Off Road / Zaitec									
.									

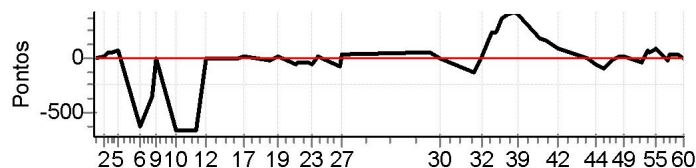
Etapa A	Num	56	Pen	0	PCZ	6	Total PP	13495	PG	11
28	Tmp	58	2.230	12:14:01	12:14:17	0	+13	3°		
29	Tmp	59	2.880	12:15:58	12:16:14	0	+13	3°		
30	Tmp	60	5.550	12:20:46	12:20:46	0	+0	3°		
31	Tmp	64	2.520	12:35:30	12:35:31	0	+0	3°		
32	Tmp	65	4.770	12:38:48	12:38:49	0	+0	3°		
33	Tmp	67	6.830	12:42:45	12:43:02	0	+14	3°		
34	Tmp	69	7.380	12:44:14	12:44:29	0	+12	3°		
35	Tmp	69	7.920	12:45:52	12:46:14	0	+19	3°		
36	Tmp	69	8.290	12:46:58	12:47:43	0	+42	2°		
37	Tmp	69	9.150	12:49:33	12:50:14	0	+38	2°		
38	Tmp	71	1.200	12:52:19	12:52:42	0	+20	2°		
39	Tmp	71	2.230	12:54:08	12:54:14	0	+3	2°		
40	Tmp	76	5.100	13:03:52	13:03:55	0	+0	2°		
41	Tmp	76	7.200	13:06:44	13:06:34	0	-21	2°		
42	Tmp	77	3.910	13:11:42	13:11:42	0	+0	2°		
43	Tmp	80	0.310	13:24:29	13:24:06	0	-60	2°		
44	Tmp	81	3.010	13:27:46	13:27:27	0	-48	2°		
45	Tmp	84	5.450	13:31:45	13:31:51	0	+3	2°		
46	Tmp	85	8.060	13:35:12	13:35:38	0	+23	2°		
47	Tmp	87	1.100	13:36:38	13:36:55	0	+14	2°		
48	Tmp	87	2.250	13:38:47	13:39:00	0	+10	2°		
49	Tmp	88	2.760	13:39:45	13:39:53	0	+5	2°		
50	Tmp	92	1.520	13:47:50	13:47:28	0	-57	2°		
51	Tmp	93	1.980	13:48:49	13:48:48	0	-0	2°		
52	Tmp	94	2.730	13:50:42	13:53:52	0	+187	2°		
53	Tmp	95	3.140	13:51:19	13:54:14	0	+172	4°		
54	Tmp	95	3.830	13:52:54	13:55:47	0	+170	4°		
55	Tmp	97	4.650	13:54:17	13:57:26	0	+186	4°		
56	Tmp	100	0.650	13:59:16	14:00:42	0	+83	4°		
57	Tmp	101	1.030	13:59:56	14:01:24	0	+85	4°		
58	Tmp	101	1.800	14:00:56	14:02:18	0	+79	4°		
59	Tmp	101	3.670	14:03:23	14:04:17	0	+51	4°		
60	Tmp	102	6.100	14:06:06	14:07:09	0	+60	4°		

Etapa B	Num	56	Pen	0	PCZ	6	Total PP	1488	PG	18
---------	-----	----	-----	---	-----	---	----------	------	----	----

N u m	121	Equipe	121 / Allan Sena (tibico)						
		Patrocinador							
		Cat / NL / Largada	ESTREANTES / 78 / 09:38:30	Cidade	Feira				

PC	Tp	Trc	KmPC	Ideal	Passagem	Pen	Pontos	Col
1	Tmp	4	0.420	09:56:00	09:56:07	0	+4	1°
2	Tmp	5	3.520	10:00:05	10:00:28	0	+20	3°
3	Tmp	9	0.900	10:01:50	10:02:54	0	+61	5°
4	Tmp	11	1.950	10:03:36	10:04:28	0	+49	5°
5	Tmp	14	3.060	10:05:58	10:07:12	0	+71	5°
6	Tmp	18	1.990	10:15:56	10:12:21	0	-636	8°
8	Tmp	23	4.500	10:21:24	10:19:20	0	-363	8°
9	Tmp	23	4.900	10:22:30	10:22:33	0	+0	7°
10	Tmp	26	0.400	10:31:35	10:27:51	0	-663	8°
11	Tmp	28	5.500	10:40:03	10:36:17	0	-669	9°
12	Tmp	30	2.200	10:44:33	10:44:32	0	-0	9°
16	Tmp	36	0.340	10:58:35	10:58:33	0	-0	9°
17	Tmp	36	2.270	11:01:13	11:01:35	0	+19	9°
18	Tmp	39	0.310	11:11:52	11:11:42	0	-21	9°
19	Tmp	42	2.320	11:15:23	11:15:48	0	+22	9°
20	Tmp	46	2.340	11:23:33	11:23:11	0	-57	9°
21	Tmp	46	3.050	11:24:44	11:24:26	0	-45	9°
22	Tmp	47	5.930	11:28:41	11:28:24	0	-42	9°
23	Tmp	49	7.360	11:30:48	11:30:23	0	-66	9°
24	Tmp	51	8.250	11:32:44	11:33:10	0	+23	9°
25	Tmp	51	9.380	11:34:31	11:34:38	0	+4	9°
26	Tmp	54	6.500	11:42:38	11:42:12	0	-69	9°
27	Tmp	54	6.720	11:43:04	11:43:48	0	+41	7°

PC	Tp	Trc	KmPC	Ideal	Passagem	Pen	Pontos	Col
Num 121	A	7°	PG 14	B	8°	PG 13	Tot PG 27	Col. 8°



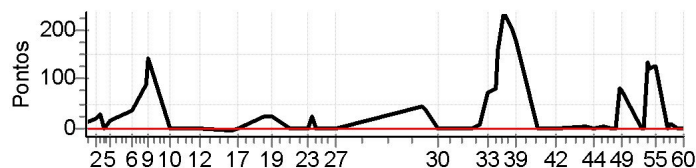
Moto Clube / Princesa Off Road / Zaitec

Etapa A	Num	121	Pen	0	PCZ	3	Total PP	2945	PG	14
28	Tmp	58	2.230	12:19:31	12:20:25	0	+51	7°		
29	Tmp	59	2.880	12:21:28	12:22:16	0	+45	6°		
30	Tmp	60	5.550	12:26:16	12:26:18	0	+0	6°		
31	Tmp	64	2.520	12:41:00	12:40:13	0	-132	8°		
32	Tmp	65	4.770	12:44:18	12:44:31	0	+10	8°		
33	Tmp	67	6.830	12:48:15	12:52:26	0	+248	8°		
34	Tmp	69	7.380	12:49:44	12:53:53	0	+246	9°		
35	Tmp	69	7.920	12:51:22	12:55:53	0	+268	9°		
36	Tmp	69	8.290	12:52:28	12:58:33	0	+362	9°		
37	Tmp	69	9.150	12:55:03	13:02:00	0	+414	9°		
38	Tmp	71	1.200	12:57:49	13:04:57	0	+425	10°		
39	Tmp	71	2.230	12:59:38	13:06:35	0	+414	10°		
40	Tmp	76	5.100	13:09:22	13:12:23	0	+178	10°		
41	Tmp	76	7.200	13:12:14	13:15:06	0	+169	10°		
42	Tmp	77	3.910	13:17:12	13:18:54	0	+99	10°		
43	Tmp	80	0.310	13:29:59	13:30:02	0	+0	10°		
44	Tmp	81	3.010	13:33:16	13:32:53	0	-60	10°		
45	Tmp	84	5.450	13:37:15	13:36:38	0	-102	10°		
46	Tmp	85	8.060	13:40:42	13:40:35	0	-12	9°		
47	Tmp	87	1.100	13:42:08	13:42:05	0	-0	9°		
48	Tmp	87	2.250	13:44:17	13:44:30	0	+10	9°		
49	Tmp	88	2.760	13:45:15	13:45:37	0	+19	9°		
50	Tmp	92	1.520	13:53:20	13:53:04	0	-39	9°		
51	Tmp	93	1.980	13:54:19	13:54:16	0	-0	8°		
52	Tmp	94	2.730	13:56:12	13:57:25	0	+70	8°		
53	Tmp	95	3.140	13:56:49	13:57:53	0	+61	8°		
54	Tmp	95	3.830	13:58:24	13:59:35	0	+68	8°		
55	Tmp	97	4.650	13:59:47	14:01:14	0	+84	8°		
56	Tmp	100	0.650	14:04:46	14:04:36	0	-21	8°		
57	Tmp	101	1.030	14:05:26	14:06:09	0	+40	8°		
58	Tmp	101	1.800	14:06:26	14:07:12	0	+43	8°		
59	Tmp	101	3.670	14:08:53	14:09:25	0	+29	8°		
60	Tmp	102	6.100	14:11:36	14:11:41	0	+2	8°		
Etapa B	Num	121	Pen	0	PCZ	4	Total PP	3721	PG	13

N u m	128	Equipe	128 / Ricardo Oliveira (rick Som)					
		Patrocinador						
		Cat / NL / Largada	ESTREANTES / 69 / 09:34:00	Cidade	Ssa			

PC	Tp	Trc	KmPC	Ideal	Passagem	Pen	Pontos	Col
1	Tmp	4	0.420	09:51:30	09:51:48	0	+15	5°
2	Tmp	5	3.520	09:55:35	09:56:01	0	+23	5°
3	Tmp	9	0.900	09:57:20	09:57:52	0	+29	4°
4	Tmp	11	1.950	09:59:06	09:59:10	0	+1	4°
5	Tmp	14	3.060	10:01:28	10:01:50	0	+19	3°
6	Tmp	18	1.990	10:11:26	10:12:07	0	+38	4°
8	Tmp	23	4.500	10:16:54	10:18:28	0	+91	3°
9	Tmp	23	4.900	10:18:00	10:20:26	0	+143	3°
10	Tmp	26	0.400	10:27:05	10:27:04	0	-0	3°
11	Tmp	28	5.500	10:35:33	10:35:34	0	+0	3°
12	Tmp	30	2.200	10:40:03	10:40:00	0	-0	3°
16	Tmp	36	0.340	10:54:05	10:54:01	0	-3	3°
17	Tmp	36	2.270	10:56:43	10:56:45	0	+0	3°
18	Tmp	39	0.310	11:07:22	11:07:51	0	+26	3°
19	Tmp	42	2.320	11:10:53	11:11:22	0	+26	3°
20	Tmp	46	2.340	11:19:03	11:19:05	0	+0	3°
21	Tmp	46	3.050	11:20:14	11:20:18	0	+1	3°
22	Tmp	47	5.930	11:24:11	11:24:14	0	+0	3°
23	Tmp	49	7.360	11:26:18	11:26:22	0	+1	3°
24	Tmp	51	8.250	11:28:14	11:28:41	0	+24	3°
25	Tmp	51	9.380	11:30:01	11:30:07	0	+3	3°
26	Tmp	54	6.500	11:38:08	11:38:09	0	+0	3°
27	Tmp	54	6.720	11:38:34	11:38:32	0	-0	3°

PC	Tp	Trc	KmPC	Ideal	Passagem	Pen	Pontos	Col
Num 128	A	3°	PG 20	B	6°	PG 15	Tot PG 35	Col. 4°



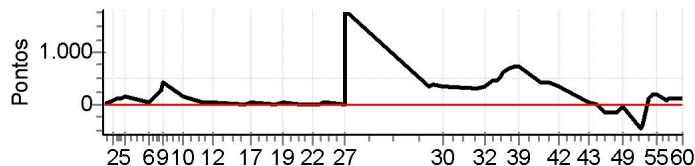
Moto Clube / Princesa Off Road / Zaitec

Etapa A	Num	128	Pen	0	PCZ	8	Total PP	443	PG	20
28	Tmp	58	2.230	12:15:01	12:15:51	0	+47	4°		
29	Tmp	59	2.880	12:16:58	12:17:37	0	+36	5°		
30	Tmp	60	5.550	12:21:46	12:21:49	0	+0	5°		
31	Tmp	64	2.520	12:36:30	12:36:36	0	+3	5°		
32	Tmp	65	4.770	12:39:48	12:39:59	0	+8	5°		
33	Tmp	67	6.830	12:43:45	12:45:03	0	+75	5°		
34	Tmp	69	7.380	12:45:14	12:46:35	0	+78	6°		
35	Tmp	69	7.920	12:46:52	12:48:17	0	+82	6°		
36	Tmp	69	8.290	12:47:58	12:50:40	0	+159	6°		
37	Tmp	69	9.150	12:50:33	12:54:31	0	+235	7°		
38	Tmp	71	1.200	12:53:19	12:56:46	0	+204	6°		
39	Tmp	71	2.230	12:55:08	12:58:09	0	+178	6°		
40	Tmp	76	5.100	13:04:52	13:04:52	0	+0	6°		
41	Tmp	76	7.200	13:07:44	13:07:47	0	+0	6°		
42	Tmp	77	3.910	13:12:42	13:12:45	0	+0	6°		
43	Tmp	80	0.310	13:25:29	13:25:39	0	+7	6°		
44	Tmp	81	3.010	13:28:46	13:28:48	0	+0	6°		
45	Tmp	84	5.450	13:32:45	13:32:53	0	+5	6°		
46	Tmp	85	8.060	13:36:12	13:36:10	0	-0	6°		
47	Tmp	87	1.100	13:37:38	13:37:38	0	+0	6°		
48	Tmp	87	2.250	13:39:47	13:41:13	0	+83	6°		
49	Tmp	88	2.760	13:40:45	13:42:06	0	+78	6°		
50	Tmp	92	1.520	13:48:50	13:48:47	0	-0	6°		
51	Tmp	93	1.980	13:49:49	13:49:52	0	+0	6°		
52	Tmp	94	2.730	13:51:42	13:54:01	0	+136	6°		
53	Tmp	95	3.140	13:52:19	13:54:24	0	+122	6°		
54	Tmp	95	3.830	13:53:54	13:56:05	0	+128	6°		
55	Tmp	97	4.650	13:55:17	13:57:28	0	+128	6°		
56	Tmp	100	0.650	14:00:16	14:00:17	0	+0	6°		
57	Tmp	101	1.030	14:00:56	14:01:07	0	+8	6°		
58	Tmp	101	1.800	14:01:56	14:02:07	0	+8	6°		
59	Tmp	101	3.670	14:04:23	14:04:26	0	+0	6°		
60	Tmp	102	6.100	14:07:06	14:07:09	0	+0	6°		
Etapa B	Num	128	Pen	0	PCZ	12	Total PP	1808	PG	15

N u m	145	Equipe	145 / Franclin Souza (boca Muchila)					
		Patrocinador						
		Cat / NL / Largada	ESTREANTES / 77 / 09:38:00	Cidade	Feira			

PC	Tp	Trc	KmPC	Ideal	Passagem	Pen	Pontos	Col
1	Tmp	4	0.420	09:55:30	09:55:56	0	+23	8°
2	Tmp	5	3.520	09:59:35	10:00:59	0	+81	7°
3	Tmp	9	0.900	10:01:20	10:03:25	0	+122	8°
4	Tmp	11	1.950	10:03:06	10:05:14	0	+125	8°
5	Tmp	14	3.060	10:05:28	10:08:27	0	+176	8°
6	Tmp	18	1.990	10:15:26	10:16:04	0	+35	7°
8	Tmp	23	4.500	10:20:54	10:25:37	0	+280	7°
9	Tmp	23	4.900	10:22:00	10:29:07	0	+424	8°
10	Tmp	26	0.400	10:31:05	10:33:29	0	+141	7°
11	Tmp	28	5.500	10:39:33	10:40:05	0	+29	7°
12	Tmp	30	2.200	10:44:03	10:44:42	0	+36	7°
16	Tmp	36	0.340	10:58:05	10:58:11	0	+3	7°
17	Tmp	36	2.270	11:00:43	11:01:28	0	+42	7°
18	Tmp	39	0.310	11:11:22	11:11:20	0	-0	7°
19	Tmp	42	2.320	11:14:53	11:15:45	0	+49	7°
20	Tmp	46	2.340	11:23:03	11:23:11	0	+5	7°
21	Tmp	46	3.050	11:24:14	11:24:21	0	+4	7°
22	Tmp	47	5.930	11:28:11	11:28:11	0	+0	7°
23	Tmp	49	7.360	11:30:18	11:30:20	0	+0	7°
24	Tmp	51	8.250	11:32:14	11:33:02	0	+45	7°
25	Tmp	51	9.380	11:34:01	11:34:37	0	+33	6°
26	Tmp	54	6.500	11:42:08	11:42:07	0	-0	6°
27	Tmp	54	6.720	11:42:34		0	+1800	9°

PC	Tp	Trc	KmPC	Ideal	Passagem	Pen	Pontos	Col
Num 145	A	9°	PG 12	B	10°	PG 11	Tot PG 23	Col. 10°



Moto Clube / Princesa Off Road / Zaitec

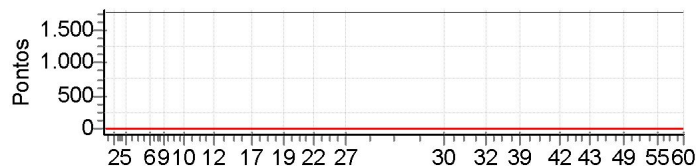
Etapa A	Num	145	Pen	0	PCZ	4	Total PP	3453	PG	12
28	Tmp	58	2.230	12:19:01	12:24:46	0	+342	13°		
29	Tmp	59	2.880	12:20:58	12:27:18	0	+377	13°		
30	Tmp	60	5.550	12:25:46	12:31:24	0	+335	12°		
31	Tmp	64	2.520	12:40:30	12:45:36	0	+303	12°		
32	Tmp	65	4.770	12:43:48	12:49:40	0	+349	12°		
33	Tmp	67	6.830	12:47:45	12:55:23	0	+455	12°		
34	Tmp	69	7.380	12:49:14	12:57:18	0	+481	12°		
35	Tmp	69	7.920	12:50:52	12:59:45	0	+530	12°		
36	Tmp	69	8.290	12:51:58	13:02:05	0	+604	12°		
37	Tmp	69	9.150	12:54:33	13:06:12	0	+696	12°		
38	Tmp	71	1.200	12:57:19	13:09:29	0	+727	12°		
39	Tmp	71	2.230	12:59:08	13:11:17	0	+726	12°		
40	Tmp	76	5.100	13:08:52	13:16:09	0	+434	12°		
41	Tmp	76	7.200	13:11:44	13:18:43	0	+416	12°		
42	Tmp	77	3.910	13:16:42	13:22:48	0	+363	12°		
43	Tmp	80	0.310	13:29:29	13:30:09	0	+37	12°		
44	Tmp	81	3.010	13:32:46	13:32:54	0	+5	12°		
45	Tmp	84	5.450	13:36:45	13:35:49	0	-159	12°		
46	Tmp	85	8.060	13:40:12	13:39:18	0	-153	12°		
47	Tmp	87	1.100	13:41:38	13:40:44	0	-153	12°		
48	Tmp	87	2.250	13:43:47	13:43:20	0	-72	11°		
49	Tmp	88	2.760	13:44:45	13:44:36	0	-18	11°		
50	Tmp	92	1.520	13:52:50	13:50:16	0	-453	11°		
51	Tmp	93	1.980	13:53:49	13:51:45	0	-363	11°		
52	Tmp	94	2.730	13:55:42	13:57:58	0	+133	11°		
53	Tmp	95	3.140	13:56:19	13:58:32	0	+130	11°		
54	Tmp	95	3.830	13:57:54	14:00:57	0	+180	11°		
55	Tmp	97	4.650	13:59:17	14:02:28	0	+188	11°		
56	Tmp	100	0.650	14:04:16	14:05:53	0	+94	11°		
57	Tmp	101	1.030	14:04:56	14:06:56	0	+117	11°		
58	Tmp	101	1.800	14:05:56	14:08:07	0	+128	11°		
59	Tmp	101	3.670	14:08:23	14:10:31	0	+125	11°		
60	Tmp	102	6.100	14:11:06	14:12:56	0	+107	10°		

Etapa B	Num	145	Pen	0	PCZ	0	Total PP	9753	PG	11
---------	-----	-----	-----	---	-----	---	----------	------	----	----

N u m	180	Equipe	180 / Sergio Cerqueira (carqueija)						
		Patrocinador							
		Cat / NL / Largada	ESTREANTES / 83 / 09:41:00	Cidade	Ssa				

PC	Tp	Trc	KmPC	Ideal	Passagem	Pen	Pontos	Col
1	Tmp	4	0.420	09:58:30		0	+1800	14°
2	Tmp	5	3.520	10:02:35		0	+1800	14°
3	Tmp	9	0.900	10:04:20		0	+1800	14°
4	Tmp	11	1.950	10:06:06		0	+1800	14°
5	Tmp	14	3.060	10:08:28		0	+1800	14°
6	Tmp	18	1.990	10:18:26		0	+1800	14°
8	Tmp	23	4.500	10:23:54		0	+1800	14°
9	Tmp	23	4.900	10:25:00		0	+1800	14°
10	Tmp	26	0.400	10:34:05		0	+1800	14°
11	Tmp	28	5.500	10:42:33		0	+1800	14°
12	Tmp	30	2.200	10:47:03		0	+1800	14°
16	Tmp	36	0.340	11:01:05		0	+1800	14°
17	Tmp	36	2.270	11:03:43		0	+1800	14°
18	Tmp	39	0.310	11:14:22		0	+1800	14°
19	Tmp	42	2.320	11:17:53		0	+1800	14°
20	Tmp	46	2.340	11:26:03		0	+1800	14°
21	Tmp	46	3.050	11:27:14		0	+1800	14°
22	Tmp	47	5.930	11:31:11		0	+1800	14°
23	Tmp	49	7.360	11:33:18		0	+1800	14°
24	Tmp	51	8.250	11:35:14		0	+1800	14°
25	Tmp	51	9.380	11:37:01		0	+1800	14°
26	Tmp	54	6.500	11:45:08		0	+1800	14°
27	Tmp	54	6.720	11:45:34		0	+1800	14°

PC	Tp	Trc	KmPC	Ideal	Passagem	Pen	Pontos	Col					
Num	180	A	NC	PG	0	B	NC	PG	0	Tot PG	0	Col.	14°



Moto Clube / Princesa Off Road / Zaitec

Etapa A	Num	180	Pen	0	PCZ	0	Total PP	41400	PG	0
----------------	-----	-----	-----	---	-----	---	----------	-------	----	---

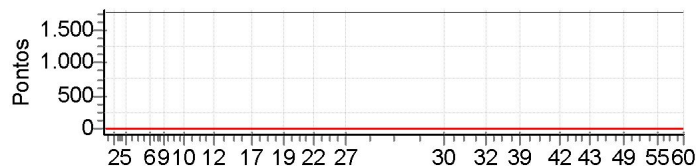
28	Tmp	58	2.230	12:22:01		0	+1800	14°
29	Tmp	59	2.880	12:23:58		0	+1800	14°
30	Tmp	60	5.550	12:28:46		0	+1800	14°
31	Tmp	64	2.520	12:43:30		0	+1800	14°
32	Tmp	65	4.770	12:46:48		0	+1800	14°
33	Tmp	67	6.830	12:50:45		0	+1800	14°
34	Tmp	69	7.380	12:52:14		0	+1800	14°
35	Tmp	69	7.920	12:53:52		0	+1800	14°
36	Tmp	69	8.290	12:54:58		0	+1800	14°
37	Tmp	69	9.150	12:57:33		0	+1800	14°
38	Tmp	71	1.200	13:00:19		0	+1800	14°
39	Tmp	71	2.230	13:02:08		0	+1800	14°
40	Tmp	76	5.100	13:11:52		0	+1800	14°
41	Tmp	76	7.200	13:14:44		0	+1800	14°
42	Tmp	77	3.910	13:19:42		0	+1800	14°
43	Tmp	80	0.310	13:32:29		0	+1800	14°
44	Tmp	81	3.010	13:35:46		0	+1800	14°
45	Tmp	84	5.450	13:39:45		0	+1800	14°
46	Tmp	85	8.060	13:43:12		0	+1800	14°
47	Tmp	87	1.100	13:44:38		0	+1800	14°
48	Tmp	87	2.250	13:46:47		0	+1800	14°
49	Tmp	88	2.760	13:47:45		0	+1800	14°
50	Tmp	92	1.520	13:55:50		0	+1800	14°
51	Tmp	93	1.980	13:56:49		0	+1800	14°
52	Tmp	94	2.730	13:58:42		0	+1800	14°
53	Tmp	95	3.140	13:59:19		0	+1800	14°
54	Tmp	95	3.830	14:00:54		0	+1800	14°
55	Tmp	97	4.650	14:02:17		0	+1800	14°
56	Tmp	100	0.650	14:07:16		0	+1800	14°
57	Tmp	101	1.030	14:07:56		0	+1800	14°
58	Tmp	101	1.800	14:08:56		0	+1800	14°
59	Tmp	101	3.670	14:11:23		0	+1800	14°
60	Tmp	102	6.100	14:14:06		0	+1800	14°

Etapa B	Num	180	Pen	0	PCZ	0	Total PP	59400	PG	0
----------------	-----	-----	-----	---	-----	---	----------	-------	----	---

N u m	182	Equipe	182 / Joaquim Menendez (kaqui)						
		Patrocinador							
		Cat / NL / Largada	ESTREANTES / 74 / 09:36:30	Cidade	São Gonça				

PC	Tp	Trc	KmPC	Ideal	Passagem	Pen	Pontos	Col
1	Tmp	4	0.420	09:54:00		0	+1800	17°
2	Tmp	5	3.520	09:58:05		0	+1800	17°
3	Tmp	9	0.900	09:59:50		0	+1800	17°
4	Tmp	11	1.950	10:01:36		0	+1800	17°
5	Tmp	14	3.060	10:03:58		0	+1800	17°
6	Tmp	18	1.990	10:13:56		0	+1800	17°
8	Tmp	23	4.500	10:19:24		0	+1800	17°
9	Tmp	23	4.900	10:20:30		0	+1800	17°
10	Tmp	26	0.400	10:29:35		0	+1800	17°
11	Tmp	28	5.500	10:38:03		0	+1800	17°
12	Tmp	30	2.200	10:42:33		0	+1800	17°
16	Tmp	36	0.340	10:56:35		0	+1800	17°
17	Tmp	36	2.270	10:59:13		0	+1800	17°
18	Tmp	39	0.310	11:09:52		0	+1800	17°
19	Tmp	42	2.320	11:13:23		0	+1800	17°
20	Tmp	46	2.340	11:21:33		0	+1800	17°
21	Tmp	46	3.050	11:22:44		0	+1800	17°
22	Tmp	47	5.930	11:26:41		0	+1800	17°
23	Tmp	49	7.360	11:28:48		0	+1800	17°
24	Tmp	51	8.250	11:30:44		0	+1800	17°
25	Tmp	51	9.380	11:32:31		0	+1800	17°
26	Tmp	54	6.500	11:40:38		0	+1800	17°
27	Tmp	54	6.720	11:41:04		0	+1800	17°

PC	Tp	Trc	KmPC	Ideal	Passagem	Pen	Pontos	Col					
Num	182	A	NC	PG	0	B	NC	PG	0	Tot PG	0	Col.	17°



Moto Clube / Princesa Off Road / Zaitec

Etapa A	Num	182	Pen	0	PCZ	0	Total PP	41400	PG	0
----------------	-----	-----	-----	---	-----	---	----------	-------	----	---

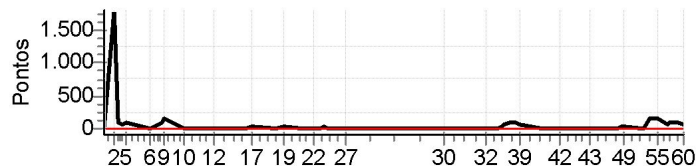
28	Tmp	58	2.230	12:17:31		0	+1800	17°
29	Tmp	59	2.880	12:19:28		0	+1800	17°
30	Tmp	60	5.550	12:24:16		0	+1800	17°
31	Tmp	64	2.520	12:39:00		0	+1800	17°
32	Tmp	65	4.770	12:42:18		0	+1800	17°
33	Tmp	67	6.830	12:46:15		0	+1800	17°
34	Tmp	69	7.380	12:47:44		0	+1800	17°
35	Tmp	69	7.920	12:49:22		0	+1800	17°
36	Tmp	69	8.290	12:50:28		0	+1800	17°
37	Tmp	69	9.150	12:53:03		0	+1800	17°
38	Tmp	71	1.200	12:55:49		0	+1800	17°
39	Tmp	71	2.230	12:57:38		0	+1800	17°
40	Tmp	76	5.100	13:07:22		0	+1800	17°
41	Tmp	76	7.200	13:10:14		0	+1800	17°
42	Tmp	77	3.910	13:15:12		0	+1800	17°
43	Tmp	80	0.310	13:27:59		0	+1800	17°
44	Tmp	81	3.010	13:31:16		0	+1800	17°
45	Tmp	84	5.450	13:35:15		0	+1800	17°
46	Tmp	85	8.060	13:38:42		0	+1800	17°
47	Tmp	87	1.100	13:40:08		0	+1800	17°
48	Tmp	87	2.250	13:42:17		0	+1800	17°
49	Tmp	88	2.760	13:43:15		0	+1800	17°
50	Tmp	92	1.520	13:51:20		0	+1800	17°
51	Tmp	93	1.980	13:52:19		0	+1800	17°
52	Tmp	94	2.730	13:54:12		0	+1800	17°
53	Tmp	95	3.140	13:54:49		0	+1800	17°
54	Tmp	95	3.830	13:56:24		0	+1800	17°
55	Tmp	97	4.650	13:57:47		0	+1800	17°
56	Tmp	100	0.650	14:02:46		0	+1800	17°
57	Tmp	101	1.030	14:03:26		0	+1800	17°
58	Tmp	101	1.800	14:04:26		0	+1800	17°
59	Tmp	101	3.670	14:06:53		0	+1800	17°
60	Tmp	102	6.100	14:09:36		0	+1800	17°

Etapa B	Num	182	Pen	0	PCZ	0	Total PP	59400	PG	0
----------------	-----	-----	-----	---	-----	---	----------	-------	----	---

N u m	225	Equipe	225 / Alan Santana (jacaré)					
		Patrocinador						
		Cat / NL / Largada	ESTREANTES / 68 / 09:33:30	Cidade	Ssa			

PC	Tp	Trc	KmPC	Ideal	Passagem	Pen	Pontos	Col
1	Tmp	4	0.420	09:51:00	09:51:20	0	+17	7°
2	Tmp	5	3.520	09:55:05		0	+1800	12°
3	Tmp	9	0.900	09:56:50	09:58:24	0	+91	11°
4	Tmp	11	1.950	09:58:36	09:59:46	0	+67	11°
5	Tmp	14	3.060	10:00:58	10:02:28	0	+87	9°
6	Tmp	18	1.990	10:10:56	10:11:09	0	+10	9°
8	Tmp	23	4.500	10:16:24	10:18:01	0	+94	9°
9	Tmp	23	4.900	10:17:30	10:20:08	0	+155	9°
10	Tmp	26	0.400	10:26:35	10:26:32	0	-0	9°
11	Tmp	28	5.500	10:35:03	10:35:06	0	+0	8°
12	Tmp	30	2.200	10:39:33	10:39:35	0	+0	8°
16	Tmp	36	0.340	10:53:35	10:53:38	0	+0	8°
17	Tmp	36	2.270	10:56:13	10:56:43	0	+27	8°
18	Tmp	39	0.310	11:06:52	11:06:50	0	-0	8°
19	Tmp	42	2.320	11:10:23	11:10:43	0	+17	8°
20	Tmp	46	2.340	11:18:33	11:18:32	0	-0	8°
21	Tmp	46	3.050	11:19:44	11:19:46	0	+0	8°
22	Tmp	47	5.930	11:23:41	11:23:49	0	+5	8°
23	Tmp	49	7.360	11:25:48	11:25:54	0	+3	8°
24	Tmp	51	8.250	11:27:44	11:28:16	0	+29	8°
25	Tmp	51	9.380	11:29:31	11:29:42	0	+8	8°
26	Tmp	54	6.500	11:37:38	11:37:38	0	+0	8°
27	Tmp	54	6.720	11:38:04	11:38:06	0	+0	6°

PC	Tp	Trc	KmPC	Ideal	Passagem	Pen	Pontos	Col					
Num	225	A	6°	PG	15	B	3°	PG	20	Tot PG	35	Col.	5°



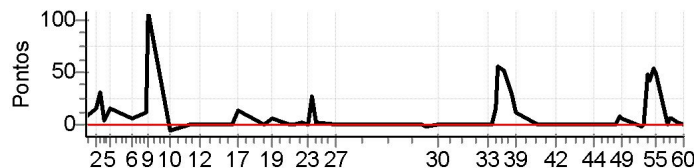
Moto Clube / Princesa Off Road / Zaitec

Etapa A	Num	225	Pen	0	PCZ	9	Total PP	2410	PG	15
28	Tmp	58	2.230	12:14:31	12:14:38	0	+4	2°		
29	Tmp	59	2.880	12:16:28	12:16:39	0	+8	2°		
30	Tmp	60	5.550	12:21:16	12:21:14	0	-0	2°		
31	Tmp	64	2.520	12:36:00	12:36:00	0	+0	2°		
32	Tmp	65	4.770	12:39:18	12:39:16	0	-0	2°		
33	Tmp	67	6.830	12:43:15	12:43:20	0	+2	2°		
34	Tmp	69	7.380	12:44:44	12:44:53	0	+6	2°		
35	Tmp	69	7.920	12:46:22	12:46:58	0	+33	2°		
36	Tmp	69	8.290	12:47:28	12:48:38	0	+67	3°		
37	Tmp	69	9.150	12:50:03	12:51:34	0	+88	3°		
38	Tmp	71	1.200	12:52:49	12:54:14	0	+82	3°		
39	Tmp	71	2.230	12:54:38	12:55:47	0	+66	3°		
40	Tmp	76	5.100	13:04:22	13:04:23	0	+0	3°		
41	Tmp	76	7.200	13:07:14	13:07:13	0	-0	3°		
42	Tmp	77	3.910	13:12:12	13:12:15	0	+0	3°		
43	Tmp	80	0.310	13:24:59	13:25:02	0	+0	3°		
44	Tmp	81	3.010	13:28:16	13:28:24	0	+5	3°		
45	Tmp	84	5.450	13:32:15	13:32:21	0	+3	3°		
46	Tmp	85	8.060	13:35:42	13:35:57	0	+12	3°		
47	Tmp	87	1.100	13:37:08	13:37:18	0	+7	3°		
48	Tmp	87	2.250	13:39:17	13:39:50	0	+30	3°		
49	Tmp	88	2.760	13:40:15	13:40:52	0	+34	3°		
50	Tmp	92	1.520	13:48:20	13:48:19	0	-0	3°		
51	Tmp	93	1.980	13:49:19	13:49:27	0	+5	3°		
52	Tmp	94	2.730	13:51:12	13:53:55	0	+160	3°		
53	Tmp	95	3.140	13:51:49	13:54:21	0	+149	2°		
54	Tmp	95	3.830	13:53:24	13:55:56	0	+149	3°		
55	Tmp	97	4.650	13:54:47	13:57:32	0	+162	3°		
56	Tmp	100	0.650	13:59:46	14:00:50	0	+61	3°		
57	Tmp	101	1.030	14:00:26	14:01:51	0	+82	3°		
58	Tmp	101	1.800	14:01:26	14:03:00	0	+91	3°		
59	Tmp	101	3.670	14:03:53	14:05:21	0	+85	3°		
60	Tmp	102	6.100	14:06:36	14:07:26	0	+47	3°		
Etapa B	Num	225	Pen	0	PCZ	8	Total PP	1438	PG	20

N u m	229	Equipe	229 / Geraldo Pinheiro (padre)					
		Patrocinador						
		Cat / NL / Largada	ESTREANTES / 66 / 09:32:30	Cidade	Ssa			

PC	Tp	Trc	KmPC	Ideal	Passagem	Pen	Pontos	Col
1	Tmp	4	0.420	09:50:00	09:50:11	0	+8	3°
2	Tmp	5	3.520	09:54:05	09:54:23	0	+15	2°
3	Tmp	9	0.900	09:55:50	09:56:23	0	+30	3°
4	Tmp	11	1.950	09:57:36	09:57:43	0	+4	3°
5	Tmp	14	3.060	09:59:58	10:00:16	0	+15	2°
6	Tmp	18	1.990	10:09:56	10:10:04	0	+5	2°
8	Tmp	23	4.500	10:15:24	10:15:38	0	+11	1°
9	Tmp	23	4.900	10:16:30	10:18:21	0	+108	1°
10	Tmp	26	0.400	10:25:35	10:25:30	0	-6	1°
11	Tmp	28	5.500	10:34:03	10:34:00	0	-0	1°
12	Tmp	30	2.200	10:38:33	10:38:30	0	-0	1°
16	Tmp	36	0.340	10:52:35	10:52:37	0	+0	1°
17	Tmp	36	2.270	10:55:13	10:55:29	0	+13	1°
18	Tmp	39	0.310	11:05:52	11:05:50	0	-0	1°
19	Tmp	42	2.320	11:09:23	11:09:32	0	+6	1°
20	Tmp	46	2.340	11:17:33	11:17:36	0	+0	1°
21	Tmp	46	3.050	11:18:44	11:18:44	0	+0	1°
22	Tmp	47	5.930	11:22:41	11:22:45	0	+1	1°
23	Tmp	49	7.360	11:24:48	11:24:50	0	+0	1°
24	Tmp	51	8.250	11:26:44	11:27:13	0	+26	1°
25	Tmp	51	9.380	11:28:31	11:28:36	0	+2	1°
26	Tmp	54	6.500	11:36:38	11:36:36	0	-0	1°
27	Tmp	54	6.720	11:37:04	11:37:03	0	-0	1°

PC	Tp	Trc	KmPC	Ideal	Passagem	Pen	Pontos	Col
Num 229	A	1°	PG 25	B	1°	PG 25	Tot PG 50	Col. 1°



Moto Clube / Princesa Off Road / Zaitec	
.	

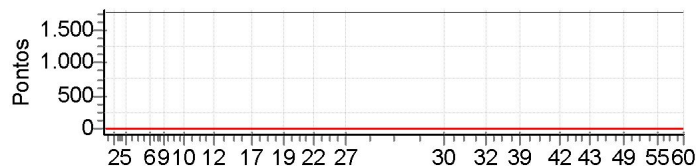
Etapa A	Num	229	Pen	0	PCZ	9	Total PP	250	PG	25
28	Tmp	58	2.230	12:13:31	12:13:33	0	+0	1°		
29	Tmp	59	2.880	12:15:28	12:15:24	0	-3	1°		
30	Tmp	60	5.550	12:20:16	12:20:16	0	+0	1°		
31	Tmp	64	2.520	12:35:00	12:35:02	0	+0	1°		
32	Tmp	65	4.770	12:38:18	12:38:21	0	+0	1°		
33	Tmp	67	6.830	12:42:15	12:42:15	0	+0	1°		
34	Tmp	69	7.380	12:43:44	12:43:44	0	+0	1°		
35	Tmp	69	7.920	12:45:22	12:45:41	0	+16	1°		
36	Tmp	69	8.290	12:46:28	12:47:27	0	+56	1°		
37	Tmp	69	9.150	12:49:03	12:49:58	0	+52	1°		
38	Tmp	71	1.200	12:51:49	12:52:20	0	+28	1°		
39	Tmp	71	2.230	12:53:38	12:53:52	0	+11	1°		
40	Tmp	76	5.100	13:03:22	13:03:25	0	+0	1°		
41	Tmp	76	7.200	13:06:14	13:06:15	0	+0	1°		
42	Tmp	77	3.910	13:11:12	13:11:10	0	-0	1°		
43	Tmp	80	0.310	13:23:59	13:24:01	0	+0	1°		
44	Tmp	81	3.010	13:27:16	13:27:17	0	+0	1°		
45	Tmp	84	5.450	13:31:15	13:31:16	0	+0	1°		
46	Tmp	85	8.060	13:34:42	13:34:42	0	+0	1°		
47	Tmp	87	1.100	13:36:08	13:36:09	0	+0	1°		
48	Tmp	87	2.250	13:38:17	13:38:28	0	+8	1°		
49	Tmp	88	2.760	13:39:15	13:39:24	0	+6	1°		
50	Tmp	92	1.520	13:47:20	13:47:16	0	-3	1°		
51	Tmp	93	1.980	13:48:19	13:48:22	0	+0	1°		
52	Tmp	94	2.730	13:50:12	13:51:04	0	+49	1°		
53	Tmp	95	3.140	13:50:49	13:51:34	0	+42	1°		
54	Tmp	95	3.830	13:52:24	13:53:20	0	+53	1°		
55	Tmp	97	4.650	13:53:47	13:54:41	0	+51	1°		
56	Tmp	100	0.650	13:58:46	13:58:45	0	-0	1°		
57	Tmp	101	1.030	13:59:26	13:59:34	0	+5	1°		
58	Tmp	101	1.800	14:00:26	14:00:35	0	+6	1°		
59	Tmp	101	3.670	14:02:53	14:02:58	0	+2	1°		
60	Tmp	102	6.100	14:05:36	14:05:37	0	+0	1°		

Etapa B	Num	229	Pen	0	PCZ	17	Total PP	391	PG	25
---------	-----	-----	-----	---	-----	----	----------	-----	----	----

N u m	285	Equipe	285 / Antonio Teofilo (tonho Queda)						
		Patrocinador							
		Cat / NL / Largada	ESTREANTES / 75 / 09:37:00	Cidade	Ssa				

PC	Tp	Trc	KmPC	Ideal	Passagem	Pen	Pontos	Col
1	Tmp	4	0.420	09:54:30		0	+1800	16°
2	Tmp	5	3.520	09:58:35		0	+1800	16°
3	Tmp	9	0.900	10:00:20		0	+1800	16°
4	Tmp	11	1.950	10:02:06		0	+1800	16°
5	Tmp	14	3.060	10:04:28		0	+1800	16°
6	Tmp	18	1.990	10:14:26		0	+1800	16°
8	Tmp	23	4.500	10:19:54		0	+1800	16°
9	Tmp	23	4.900	10:21:00		0	+1800	16°
10	Tmp	26	0.400	10:30:05		0	+1800	16°
11	Tmp	28	5.500	10:38:33		0	+1800	16°
12	Tmp	30	2.200	10:43:03		0	+1800	16°
16	Tmp	36	0.340	10:57:05		0	+1800	16°
17	Tmp	36	2.270	10:59:43		0	+1800	16°
18	Tmp	39	0.310	11:10:22		0	+1800	16°
19	Tmp	42	2.320	11:13:53		0	+1800	16°
20	Tmp	46	2.340	11:22:03		0	+1800	16°
21	Tmp	46	3.050	11:23:14		0	+1800	16°
22	Tmp	47	5.930	11:27:11		0	+1800	16°
23	Tmp	49	7.360	11:29:18		0	+1800	16°
24	Tmp	51	8.250	11:31:14		0	+1800	16°
25	Tmp	51	9.380	11:33:01		0	+1800	16°
26	Tmp	54	6.500	11:41:08		0	+1800	16°
27	Tmp	54	6.720	11:41:34		0	+1800	16°

PC	Tp	Trc	KmPC	Ideal	Passagem	Pen	Pontos	Col					
Num	285	A	NC	PG	0	B	NC	PG	0	Tot PG	0	Col.	16°



Moto Clube / Princesa Off Road / Zaitec

Etapa A	Num	285	Pen	0	PCZ	0	Total PP	41400	PG	0
----------------	-----	-----	-----	---	-----	---	----------	-------	----	---

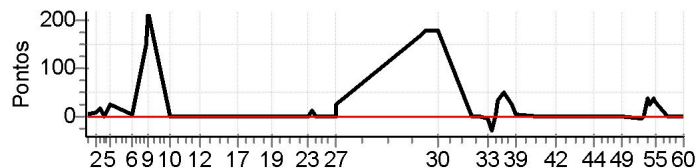
28	Tmp	58	2.230	12:18:01		0	+1800	16°
29	Tmp	59	2.880	12:19:58		0	+1800	16°
30	Tmp	60	5.550	12:24:46		0	+1800	16°
31	Tmp	64	2.520	12:39:30		0	+1800	16°
32	Tmp	65	4.770	12:42:48		0	+1800	16°
33	Tmp	67	6.830	12:46:45		0	+1800	16°
34	Tmp	69	7.380	12:48:14		0	+1800	16°
35	Tmp	69	7.920	12:49:52		0	+1800	16°
36	Tmp	69	8.290	12:50:58		0	+1800	16°
37	Tmp	69	9.150	12:53:33		0	+1800	16°
38	Tmp	71	1.200	12:56:19		0	+1800	16°
39	Tmp	71	2.230	12:58:08		0	+1800	16°
40	Tmp	76	5.100	13:07:52		0	+1800	16°
41	Tmp	76	7.200	13:10:44		0	+1800	16°
42	Tmp	77	3.910	13:15:42		0	+1800	16°
43	Tmp	80	0.310	13:28:29		0	+1800	16°
44	Tmp	81	3.010	13:31:46		0	+1800	16°
45	Tmp	84	5.450	13:35:45		0	+1800	16°
46	Tmp	85	8.060	13:39:12		0	+1800	16°
47	Tmp	87	1.100	13:40:38		0	+1800	16°
48	Tmp	87	2.250	13:42:47		0	+1800	16°
49	Tmp	88	2.760	13:43:45		0	+1800	16°
50	Tmp	92	1.520	13:51:50		0	+1800	16°
51	Tmp	93	1.980	13:52:49		0	+1800	16°
52	Tmp	94	2.730	13:54:42		0	+1800	16°
53	Tmp	95	3.140	13:55:19		0	+1800	16°
54	Tmp	95	3.830	13:56:54		0	+1800	16°
55	Tmp	97	4.650	13:58:17		0	+1800	16°
56	Tmp	100	0.650	14:03:16		0	+1800	16°
57	Tmp	101	1.030	14:03:56		0	+1800	16°
58	Tmp	101	1.800	14:04:56		0	+1800	16°
59	Tmp	101	3.670	14:07:23		0	+1800	16°
60	Tmp	102	6.100	14:10:06		0	+1800	16°

Etapa B	Num	285	Pen	0	PCZ	0	Total PP	59400	PG	0
----------------	-----	-----	-----	---	-----	---	----------	-------	----	---

N u m	286	Equipe	286 / Ricardo Lorenço (caixão)					
		Patrocinador						
		Cat / NL / Largada	ESTREANTES / 82 / 09:40:30	Cidade	Feira			

PC	Tp	Trc	KmPC	Ideal	Passagem	Pen	Pontos	Col
1	Tmp	4	0.420	09:58:00	09:58:10	0	+7	2°
2	Tmp	5	3.520	10:02:05	10:02:17	0	+9	1°
3	Tmp	9	0.900	10:03:50	10:04:10	0	+17	1°
4	Tmp	11	1.950	10:05:36	10:05:35	0	-0	1°
5	Tmp	14	3.060	10:07:58	10:08:29	0	+28	1°
6	Tmp	18	1.990	10:17:56	10:18:04	0	+5	1°
8	Tmp	23	4.500	10:23:24	10:25:58	0	+151	4°
9	Tmp	23	4.900	10:24:30	10:28:11	0	+218	4°
10	Tmp	26	0.400	10:33:35	10:33:37	0	+0	4°
11	Tmp	28	5.500	10:42:03	10:42:02	0	-0	4°
12	Tmp	30	2.200	10:46:33	10:46:31	0	-0	4°
16	Tmp	36	0.340	11:00:35	11:00:34	0	-0	4°
17	Tmp	36	2.270	11:03:13	11:03:19	0	+3	4°
18	Tmp	39	0.310	11:13:52	11:13:58	0	+3	4°
19	Tmp	42	2.320	11:17:23	11:17:30	0	+4	4°
20	Tmp	46	2.340	11:25:33	11:25:33	0	+0	4°
21	Tmp	46	3.050	11:26:44	11:26:42	0	-0	4°
22	Tmp	47	5.930	11:30:41	11:30:42	0	+0	4°
23	Tmp	49	7.360	11:32:48	11:32:50	0	+0	4°
24	Tmp	51	8.250	11:34:44	11:35:03	0	+16	4°
25	Tmp	51	9.380	11:36:31	11:36:30	0	-0	4°
26	Tmp	54	6.500	11:44:38	11:44:38	0	+0	4°
27	Tmp	54	6.720	11:45:04	11:45:33	0	+26	4°

PC	Tp	Trc	KmPC	Ideal	Passagem	Pen	Pontos	Col					
Num	286	A	4°	PG	18	B	2°	PG	22	Tot PG	40	Col.	2°



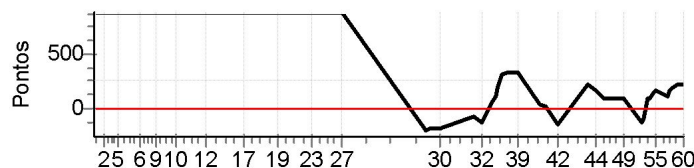
Moto Clube / Princesa Off Road / Zaitec	
.	

Etapa A	Num	286	Pen	0	PCZ	11	Total PP	487	PG	18
28	Tmp	58	2.230	12:21:31	12:24:28	0	+174	10°		
29	Tmp	59	2.880	12:23:28	12:26:32	0	+181	10°		
30	Tmp	60	5.550	12:28:16	12:31:21	0	+182	10°		
31	Tmp	64	2.520	12:43:00	12:42:59	0	-0	10°		
32	Tmp	65	4.770	12:46:18	12:46:25	0	+4	9°		
33	Tmp	67	6.830	12:50:15	12:50:11	0	-3	9°		
34	Tmp	69	7.380	12:51:44	12:51:32	0	-27	8°		
35	Tmp	69	7.920	12:53:22	12:53:30	0	+5	8°		
36	Tmp	69	8.290	12:54:28	12:55:08	0	+37	7°		
37	Tmp	69	9.150	12:57:03	12:57:57	0	+51	5°		
38	Tmp	71	1.200	12:59:49	13:00:17	0	+25	5°		
39	Tmp	71	2.230	13:01:38	13:01:46	0	+5	5°		
40	Tmp	76	5.100	13:11:22	13:11:28	0	+3	5°		
41	Tmp	76	7.200	13:14:14	13:14:16	0	+0	5°		
42	Tmp	77	3.910	13:19:12	13:19:14	0	+0	5°		
43	Tmp	80	0.310	13:31:59	13:31:59	0	+0	5°		
44	Tmp	81	3.010	13:35:16	13:35:15	0	-0	5°		
45	Tmp	84	5.450	13:39:15	13:39:14	0	-0	5°		
46	Tmp	85	8.060	13:42:42	13:42:39	0	-0	5°		
47	Tmp	87	1.100	13:44:08	13:44:07	0	-0	5°		
48	Tmp	87	2.250	13:46:17	13:46:23	0	+3	5°		
49	Tmp	88	2.760	13:47:15	13:47:14	0	-0	5°		
50	Tmp	92	1.520	13:55:20	13:55:16	0	-3	5°		
51	Tmp	93	1.980	13:56:19	13:56:16	0	-0	5°		
52	Tmp	94	2.730	13:58:12	13:58:53	0	+38	4°		
53	Tmp	95	3.140	13:58:49	13:59:18	0	+26	3°		
54	Tmp	95	3.830	14:00:24	14:01:06	0	+39	2°		
55	Tmp	97	4.650	14:01:47	14:02:23	0	+33	2°		
56	Tmp	100	0.650	14:06:46	14:06:45	0	-0	2°		
57	Tmp	101	1.030	14:07:26	14:07:29	0	+0	2°		
58	Tmp	101	1.800	14:08:26	14:08:26	0	+0	2°		
59	Tmp	101	3.670	14:10:53	14:10:54	0	+0	2°		
60	Tmp	102	6.100	14:13:36	14:13:36	0	+0	2°		
Etapa B	Num	286	Pen	0	PCZ	15	Total PP	839	PG	22

N u m	287	Equipe	287 / Guilherme Elias					
		Patrocinador						
		Cat / NL / Largada	ESTREANTES / 72 / 09:35:30	Cidade	Ssa			

PC	Tp	Trc	KmPC	Ideal	Passagem	Pen	Pontos	Col
1	Tmp	4	0.420	09:53:00	10:10:44	0	+900	12°
2	Tmp	5	3.520	09:57:05	10:15:40	0	+900	11°
3	Tmp	9	0.900	09:58:50	10:18:53	0	+900	12°
4	Tmp	11	1.950	10:00:36	10:20:47	0	+900	12°
5	Tmp	14	3.060	10:02:58	10:24:01	0	+900	12°
6	Tmp	18	1.990	10:12:56	10:29:54	0	+900	12°
8	Tmp	23	4.500	10:18:24	10:44:59	0	+900	12°
9	Tmp	23	4.900	10:19:30	10:46:54	0	+900	12°
10	Tmp	26	0.400	10:28:35	10:50:40	0	+900	12°
11	Tmp	28	5.500	10:37:03	10:56:51	0	+900	12°
12	Tmp	30	2.200	10:41:33	11:01:23	0	+900	12°
16	Tmp	36	0.340	10:55:35	11:21:28	0	+900	12°
17	Tmp	36	2.270	10:58:13	11:24:28	0	+900	12°
18	Tmp	39	0.310	11:08:52	11:32:06	0	+900	12°
19	Tmp	42	2.320	11:12:23	11:36:07	0	+900	13°
20	Tmp	46	2.340	11:20:33	11:43:21	0	+900	13°
21	Tmp	46	3.050	11:21:44	11:44:33	0	+900	13°
22	Tmp	47	5.930	11:25:41	11:47:41	0	+900	13°
23	Tmp	49	7.360	11:27:48	11:49:19	0	+900	13°
24	Tmp	51	8.250	11:29:44	11:52:37	0	+900	13°
25	Tmp	51	9.380	11:31:31	11:54:38	0	+900	13°
26	Tmp	54	6.500	11:39:38	12:01:00	0	+900	13°
27	Tmp	54	6.720	11:40:04	12:01:26	0	+900	13°

PC	Tp	Trc	KmPC	Ideal	Passagem	Pen	Pontos	Col
Num 287	A	13°	PG 8	B	9°	PG 12	Tot PG 20	Col. 11°



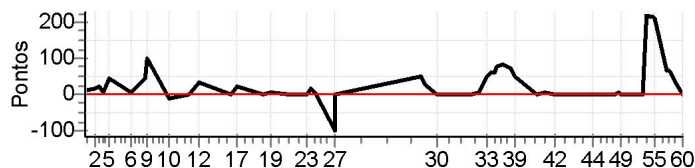
Moto Clube / Princesa Off Road / Zaitec	
.	

Etapa A	Num	287	Pen	0	PCZ	0	Total PP	20700	PG	8
28	Tmp	58	2.230	12:16:31	12:15:16	0	-216	11°		
29	Tmp	59	2.880	12:18:28	12:17:19	0	-198	11°		
30	Tmp	60	5.550	12:23:16	12:22:08	0	-195	11°		
31	Tmp	64	2.520	12:38:00	12:37:31	0	-78	11°		
32	Tmp	65	4.770	12:41:18	12:40:28	0	-141	11°		
33	Tmp	67	6.830	12:45:15	12:46:06	0	+48	10°		
34	Tmp	69	7.380	12:46:44	12:48:42	0	+115	10°		
35	Tmp	69	7.920	12:48:22	12:51:41	0	+196	10°		
36	Tmp	69	8.290	12:49:28	12:54:37	0	+306	10°		
37	Tmp	69	9.150	12:52:03	12:57:45	0	+339	10°		
38	Tmp	71	1.200	12:54:49	13:00:27	0	+335	9°		
39	Tmp	71	2.230	12:56:38	13:02:06	0	+325	9°		
40	Tmp	76	5.100	13:06:22	13:06:56	0	+31	9°		
41	Tmp	76	7.200	13:09:14	13:09:24	0	+7	9°		
42	Tmp	77	3.910	13:14:12	13:13:16	0	-159	9°		
43	Tmp	80	0.310	13:26:59	13:30:36	0	+214	9°		
44	Tmp	81	3.010	13:30:16	13:33:08	0	+169	9°		
45	Tmp	84	5.450	13:34:15	13:35:49	0	+91	9°		
46	Tmp	85	8.060	13:37:42	13:39:17	0	+92	10°		
47	Tmp	87	1.100	13:39:08	13:40:41	0	+90	10°		
48	Tmp	87	2.250	13:41:17	13:42:54	0	+94	10°		
49	Tmp	88	2.760	13:42:15	13:43:51	0	+93	10°		
50	Tmp	92	1.520	13:50:20	13:49:28	0	-147	10°		
51	Tmp	93	1.980	13:51:19	13:50:41	0	-105	10°		
52	Tmp	94	2.730	13:53:12	13:54:46	0	+91	10°		
53	Tmp	95	3.140	13:53:49	13:55:15	0	+83	9°		
54	Tmp	95	3.830	13:55:24	13:57:46	0	+139	9°		
55	Tmp	97	4.650	13:56:47	13:59:26	0	+156	9°		
56	Tmp	100	0.650	14:01:46	14:03:31	0	+102	9°		
57	Tmp	101	1.030	14:02:26	14:05:11	0	+162	9°		
58	Tmp	101	1.800	14:03:26	14:06:39	0	+190	9°		
59	Tmp	101	3.670	14:05:53	14:09:38	0	+222	9°		
60	Tmp	102	6.100	14:08:36	14:12:09	0	+210	9°		
Etapa B	Num	287	Pen	0	PCZ	0	Total PP	5139	PG	12

N u m	292	Equipe	292 / Marco Aurelio (chicó)						
		Patrocinador							
		Cat / NL / Largada	ESTREANTES / 70 / 09:34:30	Cidade	Feira				

PC	Tp	Trc	KmPC	Ideal	Passagem	Pen	Pontos	Col
1	Tmp	4	0.420	09:52:00	09:52:13	0	+10	4°
2	Tmp	5	3.520	09:56:05	09:56:23	0	+15	4°
3	Tmp	9	0.900	09:57:50	09:58:17	0	+24	2°
4	Tmp	11	1.950	09:59:36	09:59:42	0	+3	2°
5	Tmp	14	3.060	10:01:58	10:02:43	0	+42	4°
6	Tmp	18	1.990	10:11:56	10:12:06	0	+7	3°
8	Tmp	23	4.500	10:17:24	10:18:13	0	+46	2°
9	Tmp	23	4.900	10:18:30	10:20:13	0	+100	2°
10	Tmp	26	0.400	10:27:35	10:27:28	0	-12	2°
11	Tmp	28	5.500	10:36:03	10:36:01	0	-0	2°
12	Tmp	30	2.200	10:40:33	10:41:07	0	+31	2°
16	Tmp	36	0.340	10:54:35	10:54:36	0	+0	2°
17	Tmp	36	2.270	10:57:13	10:57:38	0	+22	2°
18	Tmp	39	0.310	11:07:52	11:07:55	0	+0	2°
19	Tmp	42	2.320	11:11:23	11:11:29	0	+3	2°
20	Tmp	46	2.340	11:19:33	11:19:33	0	+0	2°
21	Tmp	46	3.050	11:20:44	11:20:43	0	-0	2°
22	Tmp	47	5.930	11:24:41	11:24:43	0	+0	2°
23	Tmp	49	7.360	11:26:48	11:26:51	0	+0	2°
24	Tmp	51	8.250	11:28:44	11:29:04	0	+17	2°
25	Tmp	51	9.380	11:30:31	11:30:37	0	+3	2°
26	Tmp	54	6.500	11:38:38	11:38:02	0	-99	2°
27	Tmp	54	6.720	11:39:04	11:39:07	0	+0	2°

PC	Tp	Trc	KmPC	Ideal	Passagem	Pen	Pontos	Col					
Num	292	A	2°	PG	22	B	5°	PG	16	Tot PG	38	Col.	3°



Moto Clube / Princesa Off Road / Zaitec

Etapa A	Num	292	Pen	0	PCZ	8	Total PP	434	PG	22
----------------	-----	-----	-----	---	-----	---	----------	-----	----	----

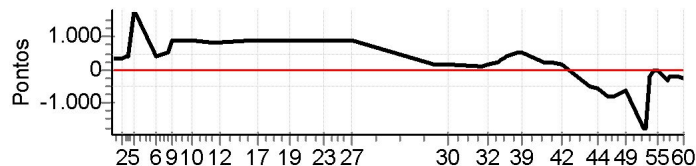
28	Tmp	58	2.230	12:15:31	12:16:23	0	+49	5°
29	Tmp	59	2.880	12:17:28	12:18:01	0	+30	4°
30	Tmp	60	5.550	12:22:16	12:22:16	0	+0	4°
31	Tmp	64	2.520	12:37:00	12:37:01	0	+0	4°
32	Tmp	65	4.770	12:40:18	12:40:27	0	+6	4°
33	Tmp	67	6.830	12:44:15	12:45:07	0	+49	4°
34	Tmp	69	7.380	12:45:44	12:46:46	0	+59	4°
35	Tmp	69	7.920	12:47:22	12:48:23	0	+58	4°
36	Tmp	69	8.290	12:48:28	12:49:51	0	+80	4°
37	Tmp	69	9.150	12:51:03	12:52:30	0	+84	4°
38	Tmp	71	1.200	12:53:49	12:55:03	0	+71	4°
39	Tmp	71	2.230	12:55:38	12:56:28	0	+47	4°
40	Tmp	76	5.100	13:05:22	13:05:22	0	+0	4°
41	Tmp	76	7.200	13:08:14	13:08:23	0	+6	4°
42	Tmp	77	3.910	13:13:12	13:13:13	0	+0	4°
43	Tmp	80	0.310	13:25:59	13:26:01	0	+0	4°
44	Tmp	81	3.010	13:29:16	13:29:15	0	-0	4°
45	Tmp	84	5.450	13:33:15	13:33:16	0	+0	4°
46	Tmp	85	8.060	13:36:42	13:36:42	0	+0	4°
47	Tmp	87	1.100	13:38:08	13:38:08	0	+0	4°
48	Tmp	87	2.250	13:40:17	13:40:25	0	+5	4°
49	Tmp	88	2.760	13:41:15	13:41:17	0	+0	4°
50	Tmp	92	1.520	13:49:20	13:49:17	0	-0	4°
51	Tmp	93	1.980	13:50:19	13:50:19	0	+0	4°
52	Tmp	94	2.730	13:52:12	13:56:01	0	+226	5°
53	Tmp	95	3.140	13:52:49	13:56:28	0	+216	5°
54	Tmp	95	3.830	13:54:24	13:58:01	0	+214	5°
55	Tmp	97	4.650	13:55:47	13:59:17	0	+207	5°
56	Tmp	100	0.650	14:00:46	14:01:58	0	+69	5°
57	Tmp	101	1.030	14:01:26	14:02:38	0	+69	5°
58	Tmp	101	1.800	14:02:26	14:03:30	0	+61	5°
59	Tmp	101	3.670	14:04:53	14:05:24	0	+28	5°
60	Tmp	102	6.100	14:07:36	14:07:35	0	-0	5°

Etapa B	Num	292	Pen	0	PCZ	13	Total PP	1634	PG	16
----------------	-----	-----	-----	---	-----	----	----------	------	----	----

N u m	294	Equipe	294 / Wellington						
		Patrocinador							
		Cat / NL / Largada	ESTREANTES / 84 / 09:41:30	Cidade	Ssa				

PC	Tp	Trc	KmPC	Ideal	Passagem	Pen	Pontos	Col
1	Tmp	4	0.420	09:59:00	10:04:32	0	+329	11°
2	Tmp	5	3.520	10:03:05	10:09:13	0	+365	10°
3	Tmp	9	0.900	10:04:50	10:11:29	0	+396	10°
4	Tmp	11	1.950	10:06:36	10:13:22	0	+403	10°
5	Tmp	14	3.060	10:08:58		0	+1800	11°
6	Tmp	18	1.990	10:18:56	10:25:30	0	+391	10°
8	Tmp	23	4.500	10:24:24	10:32:41	0	+494	10°
9	Tmp	23	4.900	10:25:30	10:42:18	0	+900	10°
10	Tmp	26	0.400	10:34:35	10:49:36	0	+898	10°
11	Tmp	28	5.500	10:43:03	10:57:02	0	+836	10°
12	Tmp	30	2.200	10:47:33	11:01:26	0	+830	10°
16	Tmp	36	0.340	11:01:35	11:21:34	0	+900	10°
17	Tmp	36	2.270	11:04:13	11:24:43	0	+900	10°
18	Tmp	39	0.310	11:14:52	11:32:08	0	+900	10°
19	Tmp	42	2.320	11:18:23	11:36:44	0	+900	10°
20	Tmp	46	2.340	11:26:33	11:43:33	0	+900	10°
21	Tmp	46	3.050	11:27:44	11:44:40	0	+900	10°
22	Tmp	47	5.930	11:31:41	11:49:44	0	+900	11°
23	Tmp	49	7.360	11:33:48	11:51:46	0	+900	11°
24	Tmp	51	8.250	11:35:44	11:55:07	0	+900	11°
25	Tmp	51	9.380	11:37:31	11:56:41	0	+900	11°
26	Tmp	54	6.500	11:45:38	12:03:11	0	+900	11°
27	Tmp	54	6.720	11:46:04	12:04:07	0	+900	11°

PC	Tp	Trc	KmPC	Ideal	Passagem	Pen	Pontos	Col					
Num	294	A	11°	PG	10	B	12°	PG	9	Tot PG	19	Col.	12°



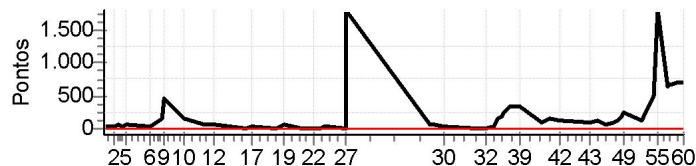
Moto Clube / Princesa Off Road / Zaitec	
.	

Etapa A	Num	294	Pen	0	PCZ	0	Total PP	18442	PG	10
28	Tmp	58	2.230	12:22:31	12:24:45	0	+131	9°		
29	Tmp	59	2.880	12:24:28	12:27:18	0	+167	9°		
30	Tmp	60	5.550	12:29:16	12:31:29	0	+130	9°		
31	Tmp	64	2.520	12:44:00	12:45:38	0	+95	9°		
32	Tmp	65	4.770	12:47:18	12:49:45	0	+144	10°		
33	Tmp	67	6.830	12:51:15	12:55:21	0	+243	11°		
34	Tmp	69	7.380	12:52:44	12:57:14	0	+267	11°		
35	Tmp	69	7.920	12:54:22	12:59:44	0	+319	11°		
36	Tmp	69	8.290	12:55:28	13:01:56	0	+385	11°		
37	Tmp	69	9.150	12:58:03	13:06:09	0	+483	11°		
38	Tmp	71	1.200	13:00:49	13:09:27	0	+515	11°		
39	Tmp	71	2.230	13:02:38	13:11:13	0	+512	11°		
40	Tmp	76	5.100	13:12:22	13:16:14	0	+229	11°		
41	Tmp	76	7.200	13:15:14	13:18:43	0	+206	11°		
42	Tmp	77	3.910	13:20:12	13:22:47	0	+152	11°		
43	Tmp	80	0.310	13:32:59	13:30:08	0	-504	11°		
44	Tmp	81	3.010	13:36:16	13:32:51	0	-606	11°		
45	Tmp	84	5.450	13:40:15	13:35:46	0	-798	11°		
46	Tmp	85	8.060	13:43:42	13:39:13	0	-798	11°		
47	Tmp	87	1.100	13:45:08	13:40:41	0	-792	11°		
48	Tmp	87	2.250	13:47:17	13:43:19	0	-705	12°		
49	Tmp	88	2.760	13:48:15	13:44:34	0	-654	12°		
50	Tmp	92	1.520	13:56:20	13:50:14	0	-1800	12°		
51	Tmp	93	1.980	13:57:19	13:51:43	0	-1800	12°		
52	Tmp	94	2.730	13:59:12	13:58:03	0	-198	12°		
53	Tmp	95	3.140	13:59:49	13:58:33	0	-219	12°		
54	Tmp	95	3.830	14:01:24	14:01:05	0	-48	12°		
55	Tmp	97	4.650	14:02:47	14:02:34	0	-30	12°		
56	Tmp	100	0.650	14:07:46	14:05:59	0	-312	12°		
57	Tmp	101	1.030	14:08:26	14:07:02	0	-243	12°		
58	Tmp	101	1.800	14:09:26	14:08:09	0	-222	12°		
59	Tmp	101	3.670	14:11:53	14:10:34	0	-228	12°		
60	Tmp	102	6.100	14:14:36	14:12:57	0	-288	12°		
Etapa B	Num	294	Pen	0	PCZ	0	Total PP	14223	PG	9

N u m	299	Equipe	299 / Gabriel Moreira (caçola)					
		Patrocinador						
		Cat / NL / Largada	ESTREANTES / 81 / 09:40:00	Cidade	Feira			

PC	Tp	Trc	KmPC	Ideal	Passagem	Pen	Pontos	Col
1	Tmp	4	0.420	09:57:30	09:57:49	0	+16	6°
2	Tmp	5	3.520	10:01:35	10:02:16	0	+38	6°
3	Tmp	9	0.900	10:03:20	10:04:16	0	+53	6°
4	Tmp	11	1.950	10:05:06	10:05:45	0	+36	6°
5	Tmp	14	3.060	10:07:28	10:08:34	0	+63	6°
6	Tmp	18	1.990	10:17:26	10:17:45	0	+16	5°
8	Tmp	23	4.500	10:22:54	10:25:20	0	+143	5°
9	Tmp	23	4.900	10:24:00	10:31:28	0	+445	5°
10	Tmp	26	0.400	10:33:05	10:35:50	0	+162	5°
11	Tmp	28	5.500	10:41:33	10:42:35	0	+59	5°
12	Tmp	30	2.200	10:46:03	10:47:20	0	+74	5°
16	Tmp	36	0.340	11:00:05	11:00:06	0	+0	5°
17	Tmp	36	2.270	11:02:43	11:03:16	0	+30	5°
18	Tmp	39	0.310	11:13:22	11:13:19	0	-0	5°
19	Tmp	42	2.320	11:16:53	11:17:46	0	+50	5°
20	Tmp	46	2.340	11:25:03	11:25:02	0	-0	5°
21	Tmp	46	3.050	11:26:14	11:26:15	0	+0	5°
22	Tmp	47	5.930	11:30:11	11:30:11	0	+0	5°
23	Tmp	49	7.360	11:32:18	11:32:21	0	+0	5°
24	Tmp	51	8.250	11:34:14	11:35:00	0	+43	5°
25	Tmp	51	9.380	11:36:01	11:36:31	0	+27	5°
26	Tmp	54	6.500	11:44:08	11:44:08	0	+0	5°
27	Tmp	54	6.720	11:44:34		0	+1800	8°

PC	Tp	Trc	KmPC	Ideal	Passagem	Pen	Pontos	Col					
Num	299	A	8°	PG	13	B	11°	PG	10	Tot PG	23	Col.	9°



Moto Clube / Princesa Off Road / Zaitec	
.	

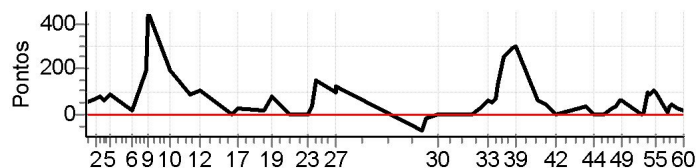
Etapa A	Num	299	Pen	0	PCZ	7	Total PP	3055	PG	13
28	Tmp	58	2.230	12:21:01	12:21:54	0	+50	6°		
29	Tmp	59	2.880	12:22:58	12:24:08	0	+67	8°		
30	Tmp	60	5.550	12:27:46	12:28:11	0	+22	8°		
31	Tmp	64	2.520	12:42:30	12:42:33	0	+0	7°		
32	Tmp	65	4.770	12:45:48	12:45:54	0	+3	7°		
33	Tmp	67	6.830	12:49:45	12:50:19	0	+31	6°		
34	Tmp	69	7.380	12:51:14	12:53:55	0	+158	7°		
35	Tmp	69	7.920	12:52:52	12:55:58	0	+183	7°		
36	Tmp	69	8.290	12:53:58	12:58:09	0	+248	8°		
37	Tmp	69	9.150	12:56:33	13:01:59	0	+323	8°		
38	Tmp	71	1.200	12:59:19	13:05:02	0	+340	8°		
39	Tmp	71	2.230	13:01:08	13:06:43	0	+332	8°		
40	Tmp	76	5.100	13:10:52	13:12:41	0	+106	8°		
41	Tmp	76	7.200	13:13:44	13:16:21	0	+154	8°		
42	Tmp	77	3.910	13:18:42	13:21:00	0	+135	8°		
43	Tmp	80	0.310	13:31:29	13:32:52	0	+80	8°		
44	Tmp	81	3.010	13:34:46	13:36:36	0	+107	8°		
45	Tmp	84	5.450	13:38:45	13:39:36	0	+48	8°		
46	Tmp	85	8.060	13:42:12	13:43:58	0	+103	8°		
47	Tmp	87	1.100	13:43:38	13:45:40	0	+119	8°		
48	Tmp	87	2.250	13:45:47	13:48:55	0	+185	8°		
49	Tmp	88	2.760	13:46:45	13:50:48	0	+240	8°		
50	Tmp	92	1.520	13:54:50	13:57:01	0	+128	8°		
51	Tmp	93	1.980	13:55:49	13:58:56	0	+184	9°		
52	Tmp	94	2.730	13:57:42	14:03:56	0	+371	9°		
53	Tmp	95	3.140	13:58:19	14:04:33	0	+371	10°		
54	Tmp	95	3.830	13:59:54	14:08:11	0	+494	10°		
55	Tmp	97	4.650	14:01:17		0	+1800	10°		
56	Tmp	100	0.650	14:06:16	14:16:52	0	+633	10°		
57	Tmp	101	1.030	14:06:56	14:17:56	0	+657	10°		
58	Tmp	101	1.800	14:07:56	14:19:09	0	+670	10°		
59	Tmp	101	3.670	14:10:23	14:22:03	0	+697	10°		
60	Tmp	102	6.100	14:13:06	14:25:05	0	+716	11°		

Etapa B	Num	299	Pen	0	PCZ	1	Total PP	9755	PG	10
---------	-----	-----	-----	---	-----	---	----------	------	----	----

N u m	304	Equipe	304 / Leonardo Freitas (leo Mad)					
		Patrocinador						
		Cat / NL / Largada	ESTREANTES / 80 / 09:39:30	Cidade	Ssa			

PC	Tp	Trc	KmPC	Ideal	Passagem	Pen	Pontos	Col
1	Tmp	4	0.420	09:57:00	09:57:52	0	+49	9°
2	Tmp	5	3.520	10:01:05	10:02:13	0	+65	8°
3	Tmp	9	0.900	10:02:50	10:04:13	0	+80	7°
4	Tmp	11	1.950	10:04:36	10:05:37	0	+58	7°
5	Tmp	14	3.060	10:06:58	10:08:30	0	+89	7°
6	Tmp	18	1.990	10:16:56	10:17:18	0	+19	6°
8	Tmp	23	4.500	10:22:24	10:25:45	0	+198	6°
9	Tmp	23	4.900	10:23:30	10:31:08	0	+455	6°
10	Tmp	26	0.400	10:32:35	10:35:53	0	+195	6°
11	Tmp	28	5.500	10:41:03	10:42:37	0	+91	6°
12	Tmp	30	2.200	10:45:33	10:47:21	0	+105	6°
16	Tmp	36	0.340	10:59:35	10:59:39	0	+1	6°
17	Tmp	36	2.270	11:02:13	11:02:42	0	+26	6°
18	Tmp	39	0.310	11:12:52	11:13:08	0	+13	6°
19	Tmp	42	2.320	11:16:23	11:17:46	0	+80	6°
20	Tmp	46	2.340	11:24:33	11:24:33	0	+0	6°
21	Tmp	46	3.050	11:25:44	11:25:43	0	-0	6°
22	Tmp	47	5.930	11:29:41	11:29:40	0	-0	6°
23	Tmp	49	7.360	11:31:48	11:31:50	0	+0	6°
24	Tmp	51	8.250	11:33:44	11:34:23	0	+36	6°
25	Tmp	51	9.380	11:35:31	11:38:00	0	+146	7°
26	Tmp	54	6.500	11:43:38	11:45:16	0	+95	7°
27	Tmp	54	6.720	11:44:04	11:46:11	0	+124	5°

PC	Tp	Trc	KmPC	Ideal	Passagem	Pen	Pontos	Col					
Num	304	A	5°	PG	16	B	7°	PG	14	Tot PG	30	Col.	6°



Moto Clube / Princesa Off Road / Zaitec

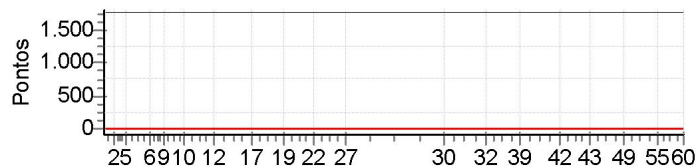
Etapa A	Num	304	Pen	0	PCZ	4	Total PP	1925	PG	16
28	Tmp	58	2.230	12:20:31	12:20:03	0	-75	8°		
29	Tmp	59	2.880	12:22:28	12:22:17	0	-24	7°		
30	Tmp	60	5.550	12:27:16	12:27:16	0	+0	7°		
31	Tmp	64	2.520	12:42:00	12:42:04	0	+1	6°		
32	Tmp	65	4.770	12:45:18	12:45:44	0	+23	6°		
33	Tmp	67	6.830	12:49:15	12:50:14	0	+56	7°		
34	Tmp	69	7.380	12:50:44	12:51:39	0	+52	5°		
35	Tmp	69	7.920	12:52:22	12:53:34	0	+69	5°		
36	Tmp	69	8.290	12:53:28	12:55:47	0	+136	5°		
37	Tmp	69	9.150	12:56:03	13:00:22	0	+256	6°		
38	Tmp	71	1.200	12:58:49	13:03:44	0	+292	7°		
39	Tmp	71	2.230	13:00:38	13:05:40	0	+299	7°		
40	Tmp	76	5.100	13:10:22	13:11:23	0	+58	7°		
41	Tmp	76	7.200	13:13:14	13:14:02	0	+45	7°		
42	Tmp	77	3.910	13:18:12	13:18:12	0	+0	7°		
43	Tmp	80	0.310	13:30:59	13:31:35	0	+33	7°		
44	Tmp	81	3.010	13:34:16	13:34:19	0	+0	7°		
45	Tmp	84	5.450	13:38:15	13:38:16	0	+0	7°		
46	Tmp	85	8.060	13:41:42	13:42:11	0	+26	7°		
47	Tmp	87	1.100	13:43:08	13:43:41	0	+30	7°		
48	Tmp	87	2.250	13:45:17	13:46:16	0	+56	7°		
49	Tmp	88	2.760	13:46:15	13:47:18	0	+60	7°		
50	Tmp	92	1.520	13:54:20	13:54:19	0	-0	7°		
51	Tmp	93	1.980	13:55:19	13:55:28	0	+6	7°		
52	Tmp	94	2.730	13:57:12	13:58:55	0	+100	7°		
53	Tmp	95	3.140	13:57:49	13:59:21	0	+89	7°		
54	Tmp	95	3.830	13:59:24	14:01:14	0	+107	7°		
55	Tmp	97	4.650	14:00:47	14:02:25	0	+95	7°		
56	Tmp	100	0.650	14:05:46	14:05:51	0	+2	7°		
57	Tmp	101	1.030	14:06:26	14:06:58	0	+29	7°		
58	Tmp	101	1.800	14:07:26	14:08:08	0	+39	7°		
59	Tmp	101	3.670	14:09:53	14:10:23	0	+27	7°		
60	Tmp	102	6.100	14:12:36	14:12:55	0	+16	7°		

Etapa B	Num	304	Pen	0	PCZ	5	Total PP	2101	PG	14
---------	-----	-----	-----	---	-----	---	----------	------	----	----

N u m	324	Equipe	324 / Leonardo Coreia (leo Galha)						
		Patrocinador							
		Cat / NL / Largada	ESTREANTES / 79 / 09:39:00	Cidade	São Gonça				

PC	Tp	Trc	KmPC	Ideal	Passagem	Pen	Pontos	Col
1	Tmp	4	0.420	09:56:30		0	+1800	15°
2	Tmp	5	3.520	10:00:35		0	+1800	15°
3	Tmp	9	0.900	10:02:20		0	+1800	15°
4	Tmp	11	1.950	10:04:06		0	+1800	15°
5	Tmp	14	3.060	10:06:28		0	+1800	15°
6	Tmp	18	1.990	10:16:26		0	+1800	15°
8	Tmp	23	4.500	10:21:54		0	+1800	15°
9	Tmp	23	4.900	10:23:00		0	+1800	15°
10	Tmp	26	0.400	10:32:05		0	+1800	15°
11	Tmp	28	5.500	10:40:33		0	+1800	15°
12	Tmp	30	2.200	10:45:03		0	+1800	15°
16	Tmp	36	0.340	10:59:05		0	+1800	15°
17	Tmp	36	2.270	11:01:43		0	+1800	15°
18	Tmp	39	0.310	11:12:22		0	+1800	15°
19	Tmp	42	2.320	11:15:53		0	+1800	15°
20	Tmp	46	2.340	11:24:03		0	+1800	15°
21	Tmp	46	3.050	11:25:14		0	+1800	15°
22	Tmp	47	5.930	11:29:11		0	+1800	15°
23	Tmp	49	7.360	11:31:18		0	+1800	15°
24	Tmp	51	8.250	11:33:14		0	+1800	15°
25	Tmp	51	9.380	11:35:01		0	+1800	15°
26	Tmp	54	6.500	11:43:08		0	+1800	15°
27	Tmp	54	6.720	11:43:34		0	+1800	15°

PC	Tp	Trc	KmPC	Ideal	Passagem	Pen	Pontos	Col					
Num	324	A	NC	PG	0	B	NC	PG	0	Tot PG	0	Col.	15°



Moto Clube / Princesa Off Road / Zaitec

Etapa A	Num	324	Pen	0	PCZ	0	Total PP	41400	PG	0
----------------	-----	-----	-----	---	-----	---	----------	-------	----	---

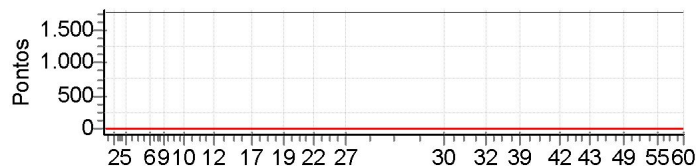
28	Tmp	58	2.230	12:20:01		0	+1800	15°
29	Tmp	59	2.880	12:21:58		0	+1800	15°
30	Tmp	60	5.550	12:26:46		0	+1800	15°
31	Tmp	64	2.520	12:41:30		0	+1800	15°
32	Tmp	65	4.770	12:44:48		0	+1800	15°
33	Tmp	67	6.830	12:48:45		0	+1800	15°
34	Tmp	69	7.380	12:50:14		0	+1800	15°
35	Tmp	69	7.920	12:51:52		0	+1800	15°
36	Tmp	69	8.290	12:52:58		0	+1800	15°
37	Tmp	69	9.150	12:55:33		0	+1800	15°
38	Tmp	71	1.200	12:58:19		0	+1800	15°
39	Tmp	71	2.230	13:00:08		0	+1800	15°
40	Tmp	76	5.100	13:09:52		0	+1800	15°
41	Tmp	76	7.200	13:12:44		0	+1800	15°
42	Tmp	77	3.910	13:17:42		0	+1800	15°
43	Tmp	80	0.310	13:30:29		0	+1800	15°
44	Tmp	81	3.010	13:33:46		0	+1800	15°
45	Tmp	84	5.450	13:37:45		0	+1800	15°
46	Tmp	85	8.060	13:41:12		0	+1800	15°
47	Tmp	87	1.100	13:42:38		0	+1800	15°
48	Tmp	87	2.250	13:44:47		0	+1800	15°
49	Tmp	88	2.760	13:45:45		0	+1800	15°
50	Tmp	92	1.520	13:53:50		0	+1800	15°
51	Tmp	93	1.980	13:54:49		0	+1800	15°
52	Tmp	94	2.730	13:56:42		0	+1800	15°
53	Tmp	95	3.140	13:57:19		0	+1800	15°
54	Tmp	95	3.830	13:58:54		0	+1800	15°
55	Tmp	97	4.650	14:00:17		0	+1800	15°
56	Tmp	100	0.650	14:05:16		0	+1800	15°
57	Tmp	101	1.030	14:05:56		0	+1800	15°
58	Tmp	101	1.800	14:06:56		0	+1800	15°
59	Tmp	101	3.670	14:09:23		0	+1800	15°
60	Tmp	102	6.100	14:12:06		0	+1800	15°

Etapa B	Num	324	Pen	0	PCZ	0	Total PP	59400	PG	0
----------------	-----	-----	-----	---	-----	---	----------	-------	----	---

N u m	325	Equipe	325 / Valmir Constantino (zanata)						
		Patrocinador							
		Cat / NL / Largada	ESTREANTES / 71 / 09:35:00	Cidade	Feira				

PC	Tp	Trc	KmPC	Ideal	Passagem	Pen	Pontos	Col
1	Tmp	4	0.420	09:52:30		0	+1800	18°
2	Tmp	5	3.520	09:56:35		0	+1800	18°
3	Tmp	9	0.900	09:58:20		0	+1800	18°
4	Tmp	11	1.950	10:00:06		0	+1800	18°
5	Tmp	14	3.060	10:02:28		0	+1800	18°
6	Tmp	18	1.990	10:12:28		0	+1800	18°
8	Tmp	23	4.500	10:17:54		0	+1800	18°
9	Tmp	23	4.900	10:19:00		0	+1800	18°
10	Tmp	26	0.400	10:28:05		0	+1800	18°
11	Tmp	28	5.500	10:36:33		0	+1800	18°
12	Tmp	30	2.200	10:41:03		0	+1800	18°
16	Tmp	36	0.340	10:55:05		0	+1800	18°
17	Tmp	36	2.270	10:57:43		0	+1800	18°
18	Tmp	39	0.310	11:08:22		0	+1800	18°
19	Tmp	42	2.320	11:11:53		0	+1800	18°
20	Tmp	46	2.340	11:20:03		0	+1800	18°
21	Tmp	46	3.050	11:21:14		0	+1800	18°
22	Tmp	47	5.930	11:25:11		0	+1800	18°
23	Tmp	49	7.360	11:27:18		0	+1800	18°
24	Tmp	51	8.250	11:29:14		0	+1800	18°
25	Tmp	51	9.380	11:31:01		0	+1800	18°
26	Tmp	54	6.500	11:39:08		0	+1800	18°
27	Tmp	54	6.720	11:39:34		0	+1800	18°

PC	Tp	Trc	KmPC	Ideal	Passagem	Pen	Pontos	Col					
Num	325	A	NC	PG	0	B	NC	PG	0	Tot PG	0	Col.	18°



Moto Clube / Princesa Off Road / Zaitec

Etapa A	Num	325	Pen	0	PCZ	0	Total PP	41400	PG	0
----------------	-----	-----	-----	---	-----	---	----------	-------	----	---

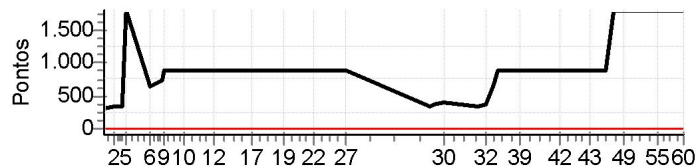
28	Tmp	58	2.230	12:16:01		0	+1800	18°
29	Tmp	59	2.880	12:17:58		0	+1800	18°
30	Tmp	60	5.550	12:22:46		0	+1800	18°
31	Tmp	64	2.520	12:37:30		0	+1800	18°
32	Tmp	65	4.770	12:40:48		0	+1800	18°
33	Tmp	67	6.830	12:44:45		0	+1800	18°
34	Tmp	69	7.380	12:46:14		0	+1800	18°
35	Tmp	69	7.920	12:47:52		0	+1800	18°
36	Tmp	69	8.290	12:48:58		0	+1800	18°
37	Tmp	69	9.150	12:51:33		0	+1800	18°
38	Tmp	71	1.200	12:54:19		0	+1800	18°
39	Tmp	71	2.230	12:56:08		0	+1800	18°
40	Tmp	76	5.100	13:05:52		0	+1800	18°
41	Tmp	76	7.200	13:08:44		0	+1800	18°
42	Tmp	77	3.910	13:13:42		0	+1800	18°
43	Tmp	80	0.310	13:26:29		0	+1800	18°
44	Tmp	81	3.010	13:29:46		0	+1800	18°
45	Tmp	84	5.450	13:33:45		0	+1800	18°
46	Tmp	85	8.060	13:37:12		0	+1800	18°
47	Tmp	87	1.100	13:38:38		0	+1800	18°
48	Tmp	87	2.250	13:40:47		0	+1800	18°
49	Tmp	88	2.760	13:41:45		0	+1800	18°
50	Tmp	92	1.520	13:49:50		0	+1800	18°
51	Tmp	93	1.980	13:50:49		0	+1800	18°
52	Tmp	94	2.730	13:52:42		0	+1800	18°
53	Tmp	95	3.140	13:53:19		0	+1800	18°
54	Tmp	95	3.830	13:54:54		0	+1800	18°
55	Tmp	97	4.650	13:56:17		0	+1800	18°
56	Tmp	100	0.650	14:01:16		0	+1800	18°
57	Tmp	101	1.030	14:01:56		0	+1800	18°
58	Tmp	101	1.800	14:02:56		0	+1800	18°
59	Tmp	101	3.670	14:05:23		0	+1800	18°
60	Tmp	102	6.100	14:08:06		0	+1800	18°

Etapa B	Num	325	Pen	0	PCZ	0	Total PP	59400	PG	0
----------------	-----	-----	-----	---	-----	---	----------	-------	----	---

N u m	326	Equipe	326 / Alexandre Gomes (alex)						
		Patrocinador							
		Cat / NL / Largada	ESTREANTES / 76 / 09:37:30	Cidade	Feira				

PC	Tp	Trc	KmPC	Ideal	Passagem	Pen	Pontos	Col
1	Tmp	4	0.420	09:55:00	10:00:12	0	+309	10°
2	Tmp	5	3.520	09:59:05	10:04:29	0	+321	9°
3	Tmp	9	0.900	10:00:50	10:06:42	0	+349	9°
4	Tmp	11	1.950	10:02:36	10:08:19	0	+340	9°
5	Tmp	14	3.060	10:04:58		0	+1800	10°
6	Tmp	18	1.990	10:14:56	10:25:28	0	+629	11°
8	Tmp	23	4.500	10:20:24	10:32:54	0	+747	11°
9	Tmp	23	4.900	10:21:30	10:42:18	0	+900	11°
10	Tmp	26	0.400	10:30:35	10:49:08	0	+900	11°
11	Tmp	28	5.500	10:39:03	10:57:00	0	+900	11°
12	Tmp	30	2.200	10:43:33	11:01:30	0	+900	11°
16	Tmp	36	0.340	10:57:35	11:21:31	0	+900	11°
17	Tmp	36	2.270	11:00:13	11:24:38	0	+900	11°
18	Tmp	39	0.310	11:10:52	11:32:10	0	+900	11°
19	Tmp	42	2.320	11:14:23	11:36:28	0	+900	11°
20	Tmp	46	2.340	11:22:33	11:43:28	0	+900	11°
21	Tmp	46	3.050	11:23:44	11:44:38	0	+900	12°
22	Tmp	47	5.930	11:27:41	11:49:40	0	+900	12°
23	Tmp	49	7.360	11:29:48	11:51:42	0	+900	12°
24	Tmp	51	8.250	11:31:44	11:54:45	0	+900	12°
25	Tmp	51	9.380	11:33:31	11:56:25	0	+900	12°
26	Tmp	54	6.500	11:41:38	12:03:11	0	+900	12°
27	Tmp	54	6.720	11:42:04	12:04:17	0	+900	12°

PC	Tp	Trc	KmPC	Ideal	Passagem	Pen	Pontos	Col					
Num	326	A	12°	PG	9	B	13°	PG	8	Tot PG	17	Col.	13°



Moto Clube / Princesa Off Road / Zaitec	
.	

Etapa A	Num	326	Pen	0	PCZ	0	Total PP	18895	PG	9
----------------	-----	-----	-----	---	-----	---	----------	-------	----	---

28	Tmp	58	2.230	12:18:31	12:23:59	0	+325	12°
29	Tmp	59	2.880	12:20:28	12:26:29	0	+358	12°
30	Tmp	60	5.550	12:25:16	12:31:57	0	+398	13°
31	Tmp	64	2.520	12:40:00	12:45:32	0	+329	13°
32	Tmp	65	4.770	12:43:18	12:49:35	0	+374	13°
33	Tmp	67	6.830	12:47:15	12:58:39	0	+681	13°
34	Tmp	69	7.380	12:48:44	13:03:46	0	+899	13°
35	Tmp	69	7.920	12:50:22	13:07:27	0	+900	13°
36	Tmp	69	8.290	12:51:28	13:14:33	0	+900	13°
37	Tmp	69	9.150	12:54:03	13:19:40	0	+900	13°
38	Tmp	71	1.200	12:56:49	13:22:32	0	+900	13°
39	Tmp	71	2.230	12:58:38	13:24:16	0	+900	13°
40	Tmp	76	5.100	13:08:22	13:31:09	0	+900	13°
41	Tmp	76	7.200	13:11:14	13:37:51	0	+900	13°
42	Tmp	77	3.910	13:16:12	13:41:52	0	+900	13°
43	Tmp	80	0.310	13:28:59	13:49:44	0	+900	13°
44	Tmp	81	3.010	13:32:16	13:52:45	0	+900	13°
45	Tmp	84	5.450	13:36:15	13:55:49	0	+900	13°
46	Tmp	85	8.060	13:39:42	14:12:31	0	+1800	13°
47	Tmp	87	1.100	13:41:08	14:14:20	0	+1800	13°
48	Tmp	87	2.250	13:43:17	14:18:14	0	+1800	13°
49	Tmp	88	2.760	13:44:15	14:19:40	0	+1800	13°
50	Tmp	92	1.520	13:52:20	14:25:03	0	+1800	13°
51	Tmp	93	1.980	13:53:19	14:26:22	0	+1800	13°
52	Tmp	94	2.730	13:55:12	14:34:54	0	+1800	13°
53	Tmp	95	3.140	13:55:49	14:35:31	0	+1800	13°
54	Tmp	95	3.830	13:57:24	14:42:09	0	+1800	13°
55	Tmp	97	4.650	13:58:47		0	+1800	13°
56	Tmp	100	0.650	14:03:46	14:47:39	0	+1800	13°
57	Tmp	101	1.030	14:04:26	14:48:47	0	+1800	13°
58	Tmp	101	1.800	14:05:26	14:50:03	0	+1800	13°
59	Tmp	101	3.670	14:07:53	14:52:53	0	+1800	13°
60	Tmp	102	6.100	14:10:36	15:00:00	0	+1800	13°

Etapa B	Num	326	Pen	0	PCZ	0	Total PP	40264	PG	8
----------------	-----	-----	-----	---	-----	---	----------	-------	----	---