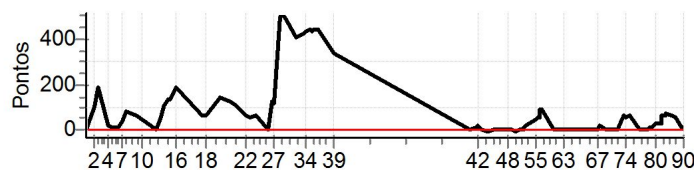


N u m	25	Equipe	25 / Joao Benedito V. de Andrade Jr / Bene						
		Patrocinador							
		Cat / NL / Largada	JUNIOR / 43 / 08:53:00	Cidade	Sto Ant de Jesus				

PC	Tp	Trc	KmPC	Ideal	Passagem	Pen	Pontos	Col	PC	Tp	Trc	KmPC	Ideal	Passagem	Pen	Pontos	Col
1	Tmp	3	0.875	09:02:17	09:02:19	0	+0	5°	59	Tmp	112	4.100	12:46:42	12:48:17	0	+92	10°
2	Tmp	5	3.706	09:06:29	09:08:12	0	+100	12°	60	Tmp	115	6.288	12:52:45	12:52:45	0	+0	10°
3	Tmp	6	4.396	09:07:48	09:11:02	0	+191	13°	61	Tmp	117	7.265	12:54:12	12:54:15	0	+0	10°
4	Tmp	9	1.332	09:13:10	09:13:30	0	+17	13°	62	Tmp	117	8.149	12:55:25	12:55:24	0	-0	10°
5	Tmp	11	2.366	09:14:46	09:14:58	0	+9	13°	63	Tmp	118	10.030	12:57:53	12:57:49	0	-3	10°
6	Tmp	12	3.599	09:18:05	09:18:13	0	+5	13°	64	Tmp	118	12.744	13:01:25	13:01:22	0	-0	10°
7	Tmp	14	4.326	09:20:00	09:20:37	0	+34	13°	65	Tmp	121	0.603	13:02:34	13:02:32	0	-0	10°
8	Tmp	16	5.226	09:22:10	09:23:31	0	+78	13°	66	Tmp	122	1.180	13:03:26	13:03:30	0	+1	9°
9	Tmp	20	7.247	09:26:43	09:27:46	0	+60	12°	67	Tmp	126	0.583	13:14:24	13:14:24	0	+0	9°
10	Tmp	20	8.875	09:29:30	09:30:16	0	+43	11°	68	Tmp	127	1.265	13:15:28	13:15:51	0	+20	9°
11	Tmp	24	1.784	09:36:37	09:36:37	0	+0	11°	69	Tmp	128	3.244	13:18:40	13:18:47	0	+4	9°
12	Tmp	25	2.622	09:39:05	09:39:56	0	+48	11°	70	Tmp	133	1.038	13:21:46	13:21:44	0	-0	8°
13	Tmp	25	3.122	09:41:05	09:42:51	0	+103	11°	71	Tmp	133	1.808	13:24:20	13:24:23	0	+0	7°
14	Tmp	26	3.479	09:42:28	09:44:47	0	+136	10°	72	Tmp	134	2.247	13:26:03	13:26:51	0	+45	7°
15	Tmp	27	3.949	09:43:51	09:46:08	0	+134	10°	73	Tmp	135	2.715	13:27:30	13:28:33	0	+60	8°
16	Tmp	30	5.142	09:46:10	09:49:18	0	+185	9°	74	Tmp	136	3.042	13:28:21	13:29:19	0	+55	8°
17	Tmp	35	2.078	09:59:17	10:00:26	0	+66	9°	75	Tmp	137	3.935	13:29:57	13:30:59	0	+59	8°
18	Tmp	37	3.208	10:01:03	10:02:07	0	+61	8°	76	Tmp	140	5.322	13:34:59	13:34:59	0	+0	8°
19	Tmp	42	8.878	10:08:27	10:10:50	0	+140	10°	77	Tmp	141	7.859	13:39:00	13:39:07	0	+4	8°
20	Tmp	47	2.382	10:13:12	10:15:16	0	+121	10°	78	Tmp	143	8.452	13:40:03	13:40:14	0	+8	8°
21	Tmp	49	4.920	10:16:18	10:18:10	0	+109	10°	79	Tmp	144	0.061	13:41:27	13:41:43	0	+13	8°
22	Tmp	50	8.401	10:20:36	10:21:37	0	+58	11°	80	Tmp	145	1.562	13:43:30	13:43:58	0	+25	8°
23	Tmp	52	0.201	10:23:11	10:24:10	0	+56	11°	81	Tmp	146	3.077	13:45:43	13:46:13	0	+27	8°
24	Tmp	54	2.350	10:26:29	10:27:38	0	+66	11°	82	Tmp	146	3.446	13:46:22	13:47:30	0	+65	8°
25	Tmp	58	0.230	10:32:14	10:32:15	0	+0	11°	83	Tmp	147	3.788	13:46:58	13:48:05	0	+64	8°
26	Tmp	60	1.457	10:34:06	10:36:15	0	+126	11°	84	Tmp	150	4.506	13:48:05	13:49:13	0	+65	8°
27	Tmp	60	1.887	10:34:47	10:36:46	0	+116	11°	85	Tmp	150	4.637	13:48:18	13:49:29	0	+68	8°
28	Tmp	64	3.320	10:37:24	10:45:45	0	+498	12°	86	Tmp	152	6.165	13:51:10	13:52:16	0	+63	8°
29	Tmp	66	4.183	10:39:04	10:47:43	0	+516	12°	87	Tmp	153	7.453	13:53:03	13:53:58	0	+52	8°
30	Tmp	69	5.179	10:40:57	10:49:10	0	+490	12°	88	Tmp	154	9.789	13:56:07	13:56:21	0	+11	8°
31	Tmp	72	8.898	10:46:05	10:52:59	0	+411	12°	89	Tmp	155	9.848	13:56:13	13:56:28	0	+12	8°
32	Tmp	73	0.331	10:47:29	10:54:34	0	+422	12°	90	Tmp	155	10.272	13:56:48	13:57:01	0	+10	8°
33	Tmp	74	1.352	10:49:34	10:56:47	0	+430	12°	<b>Etapa B</b> Num 25 Pen 0 PCZ 18 Total PP 1132 PG 13								
34	Tmp	75	1.883	10:50:40	10:57:59	0	+436	12°	Num 25 A 12° PG 9 B 8° PG 13 Tot PG 22 Col. 12°								
35	Tmp	75	2.771	10:52:11	10:59:35	0	+441	12°									
36	Tmp	75	3.774	10:53:55	11:01:16	0	+438	12°									
37	Tmp	76	4.206	10:54:34	11:02:02	0	+445	12°									
38	Tmp	76	5.470	10:56:25	11:03:55	0	+447	12°									
39	Tmp	78	11.908	11:04:50	11:10:34	0	+341	12°									

Etapa A	Num	25	Pen	0	PCZ	3	Total PP	7377	PG	9
40	Tmp	84	3.419	12:11:25	12:11:26	0	+0	7°		
41	Tmp	87	5.618	12:14:35	12:14:47	0	+9	6°		
42	Tmp	88	6.046	12:15:22	12:15:40	0	+15	7°		
43	Tmp	89	7.837	12:17:44	12:17:45	0	+0	6°		
44	Tmp	90	10.102	12:20:28	12:20:22	0	-9	6°		
45	Tmp	92	0.434	12:23:10	12:23:12	0	+0	6°		
46	Tmp	94	1.558	12:24:47	12:24:47	0	+0	6°		
47	Tmp	95	4.014	12:27:57	12:27:56	0	-0	6°		
48	Tmp	96	5.897	12:30:32	12:30:32	0	+0	6°		
49	Tmp	100	6.628	12:31:53	12:31:53	0	+0	5°		
50	Tmp	101	7.581	12:33:48	12:33:42	0	-9	7°		
51	Tmp	104	8.731	12:35:40	12:35:42	0	+0	7°		
52	Tmp	105	9.934	12:37:38	12:37:40	0	+0	6°		
53	Tmp	106	10.213	12:38:07	12:38:20	0	+10	6°		
54	Tmp	108	0.550	12:39:12	12:39:29	0	+14	4°		
55	Tmp	110	2.679	12:43:33	12:44:20	0	+44	9°		
56	Tmp	111	2.980	12:44:33	12:45:30	0	+54	9°		
57	Tmp	112	3.472	12:45:24	12:46:16	0	+49	9°		
58	Tmp	112	3.601	12:45:40	12:47:16	0	+93	9°		

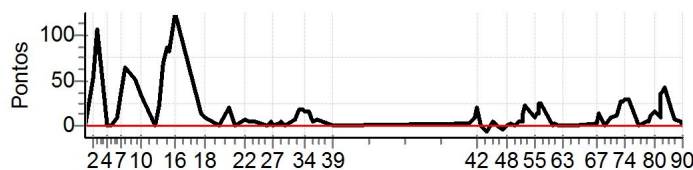


<b>Moto Clube / Princesa Off Road / Zaitec</b>

N u m	28	Equipe	28 / Rodrigo Silva de Souza / Rodrigao						
		Patrocinador	Gasauto, Omega Seguros, Princesa Off Road						
		Cat / NL / Largada	JUNIOR / 38 / 08:50:30	Cidade	Feira de Santana	Honda Crf-250			

PC	Tp	Trc	KmPC	Ideal	Passagem	Pen	Pontos	Col	PC	Tp	Trc	KmPC	Ideal	Passagem	Pen	Pontos	Col
1	Tmp	3	0.875	08:59:47	08:59:46	0	-0	9°	59	Tmp	112	4.100	12:44:12	12:44:41	0	+26	6°
2	Tmp	5	3.706	09:03:59	09:04:55	0	+53	8°	60	Tmp	115	6.288	12:50:15	12:50:16	0	+0	6°
3	Tmp	6	4.396	09:05:18	09:07:08	0	+107	7°	61	Tmp	117	7.265	12:51:42	12:51:47	0	+2	6°
4	Tmp	9	1.332	09:10:40	09:10:44	0	+1	7°	62	Tmp	117	8.149	12:52:55	12:52:55	0	+0	6°
5	Tmp	11	2.366	09:12:16	09:12:17	0	+0	7°	63	Tmp	118	10.030	12:55:23	12:55:25	0	+0	6°
6	Tmp	12	3.599	09:15:35	09:15:48	0	+10	7°	64	Tmp	118	12.744	12:58:55	12:58:59	0	+1	6°
7	Tmp	14	4.326	09:17:30	09:18:12	0	+39	7°	65	Tmp	121	0.603	13:00:04	13:00:01	0	-0	6°
8	Tmp	16	5.226	09:19:40	09:20:49	0	+66	7°	66	Tmp	122	1.180	13:00:56	13:00:58	0	+0	6°
9	Tmp	20	7.247	09:24:13	09:25:07	0	+51	6°	67	Tmp	126	0.583	13:11:54	13:11:59	0	+2	6°
10	Tmp	20	8.875	09:27:00	09:27:38	0	+35	6°	68	Tmp	127	1.265	13:12:58	13:13:14	0	+13	6°
11	Tmp	24	1.784	09:34:07	09:34:11	0	+1	6°	69	Tmp	128	3.244	13:16:10	13:16:13	0	+0	6°
12	Tmp	25	2.622	09:36:35	09:37:01	0	+23	6°	70	Tmp	133	1.038	13:19:16	13:19:29	0	+10	5°
13	Tmp	25	3.122	09:38:35	09:39:48	0	+70	5°	71	Tmp	133	1.808	13:21:50	13:22:04	0	+11	5°
14	Tmp	26	3.479	09:39:58	09:41:29	0	+88	5°	72	Tmp	134	2.247	13:23:33	13:24:03	0	+27	5°
15	Tmp	27	3.949	09:41:21	09:42:46	0	+82	5°	73	Tmp	135	2.715	13:25:00	13:25:31	0	+28	3°
16	Tmp	30	5.142	09:43:40	09:45:48	0	+125	5°	74	Tmp	136	3.042	13:25:51	13:26:24	0	+30	3°
17	Tmp	35	2.078	09:56:47	09:57:04	0	+14	4°	75	Tmp	137	3.935	13:27:27	13:28:00	0	+30	3°
18	Tmp	37	3.208	09:58:33	09:58:46	0	+10	4°	76	Tmp	140	5.322	13:32:29	13:32:30	0	+0	3°
19	Tmp	42	8.878	10:05:57	10:06:01	0	+1	4°	77	Tmp	141	7.859	13:36:30	13:36:39	0	+6	3°
20	Tmp	47	2.382	10:10:42	10:11:05	0	+20	3°	78	Tmp	143	8.452	13:37:33	13:37:42	0	+6	3°
21	Tmp	49	4.920	10:13:48	10:13:51	0	+0	3°	79	Tmp	144	0.061	13:38:57	13:39:12	0	+12	4°
22	Tmp	50	8.401	10:18:06	10:18:16	0	+7	3°	80	Tmp	145	1.562	13:41:00	13:41:19	0	+16	4°
23	Tmp	52	0.201	10:20:41	10:20:48	0	+4	3°	81	Tmp	146	3.077	13:43:13	13:43:26	0	+10	4°
24	Tmp	54	2.350	10:23:59	10:24:07	0	+5	3°	82	Tmp	146	3.446	13:43:52	13:44:32	0	+37	5°
25	Tmp	58	0.230	10:29:44	10:29:44	0	+0	3°	83	Tmp	147	3.788	13:44:28	13:45:09	0	+38	5°
26	Tmp	60	1.457	10:31:36	10:31:43	0	+4	3°	84	Tmp	150	4.506	13:45:35	13:46:20	0	+42	5°
27	Tmp	60	1.887	10:32:17	10:32:18	0	+0	3°	85	Tmp	150	4.637	13:45:48	13:46:34	0	+43	6°
28	Tmp	64	3.320	10:34:54	10:35:00	0	+3	3°	86	Tmp	152	6.165	13:48:40	13:49:03	0	+20	6°
29	Tmp	66	4.183	10:36:34	10:36:43	0	+6	3°	87	Tmp	153	7.453	13:50:33	13:50:44	0	+8	6°
30	Tmp	69	5.179	10:38:27	10:38:24	0	-0	3°	88	Tmp	154	9.789	13:53:37	13:53:44	0	+4	6°
31	Tmp	72	8.898	10:43:35	10:43:45	0	+7	3°	89	Tmp	155	9.848	13:53:43	13:53:51	0	+5	6°
32	Tmp	73	0.331	10:44:59	10:45:20	0	+18	3°	90	Tmp	155	10.272	13:54:18	13:54:21	0	+0	6°
33	Tmp	74	1.352	10:47:04	10:47:25	0	+18	3°	<b>Etapa B</b> Num 28 Pen 0 PCZ 12 Total PP 582 PG 15								
34	Tmp	75	1.883	10:48:10	10:48:30	0	+17	3°	Num 28 A 3° PG 20 B 6° PG 15 Tot PG 35 Col. 3°								
35	Tmp	75	2.771	10:49:41	10:50:01	0	+17	3°									
36	Tmp	75	3.774	10:51:25	10:51:37	0	+9	3°									
37	Tmp	76	4.206	10:52:04	10:52:13	0	+6	3°									
38	Tmp	76	5.470	10:53:55	10:54:05	0	+7	3°									
39	Tmp	78	11.908	11:02:20	11:02:20	0	+0	3°									

Etapa A	Num	28	Pen	0	PCZ	7	Total PP	924	PG	20
40	Tmp	84	3.419	12:08:55	12:09:00	0	+2	13°		
41	Tmp	87	5.618	12:12:05	12:12:17	0	+9	9°		
42	Tmp	88	6.046	12:12:52	12:13:15	0	+20	11°		
43	Tmp	89	7.837	12:15:14	12:15:15	0	+0	11°		
44	Tmp	90	10.102	12:17:58	12:17:53	0	-6	9°		
45	Tmp	92	0.434	12:20:40	12:20:48	0	+5	10°		
46	Tmp	94	1.558	12:22:17	12:22:19	0	+0	10°		
47	Tmp	95	4.014	12:25:27	12:25:23	0	-3	10°		
48	Tmp	96	5.897	12:28:02	12:28:02	0	+0	10°		
49	Tmp	100	6.628	12:29:23	12:29:28	0	+2	10°		
50	Tmp	101	7.581	12:31:18	12:31:20	0	+0	10°		
51	Tmp	104	8.731	12:33:10	12:33:17	0	+4	10°		
52	Tmp	105	9.934	12:35:08	12:35:16	0	+5	9°		
53	Tmp	106	10.213	12:35:37	12:35:54	0	+14	9°		
54	Tmp	108	0.550	12:36:42	12:37:07	0	+22	9°		
55	Tmp	110	2.679	12:41:03	12:41:16	0	+10	8°		
56	Tmp	111	2.980	12:42:03	12:42:19	0	+13	7°		
57	Tmp	112	3.472	12:42:54	12:43:11	0	+14	6°		
58	Tmp	112	3.601	12:43:10	12:43:39	0	+26	6°		



**Moto Clube / Princesa Off Road / Zaitec**

<b>N u m</b>	<b>53</b>	<b>Equipe</b>	53 / Rildo Remisio Florêncio / Largadão						
		<b>Patrocinador</b>	Construpal						
		<b>Cat / NL / Largada</b>	JUNIOR / 49 / 08:56:00	<b>Cidade</b>	Petrolina	Honda Crf-230			

PC	Tp	Trc	KmPC	Ideal	Passagem	Pen	Pontos	Col	PC	Tp	Trc	KmPC	Ideal	Passagem	Pen	Pontos	Col
1	Tmp	3	0.875	09:05:17	09:05:17	100	+100	13°	59	Tmp	112	4.100	12:49:42	12:49:57	0	+12	3°
2	Tmp	5	3.706	09:09:29	09:10:04	0	+32	13°	60	Tmp	115	6.288	12:55:45	12:55:41	0	-3	3°
3	Tmp	6	4.396	09:10:48	09:11:54	0	+63	9°	61	Tmp	117	7.265	12:57:12	12:57:14	0	+0	2°
4	Tmp	9	1.332	09:16:10	09:16:13	0	+0	9°	62	Tmp	117	8.149	12:58:25	12:58:25	0	+0	2°
5	Tmp	11	2.366	09:17:46	09:17:49	0	+0	9°	63	Tmp	118	10.030	13:00:53	13:00:50	0	-0	2°
6	Tmp	12	3.599	09:21:05	09:21:10	0	+2	9°	64	Tmp	118	12.744	13:04:25	13:04:25	0	+0	2°
7	Tmp	14	4.326	09:23:00	09:23:27	0	+24	9°	65	Tmp	121	0.603	13:05:34	13:05:35	0	+0	2°
8	Tmp	16	5.226	09:25:10	09:25:45	0	+32	4°	66	Tmp	122	1.180	13:06:26	13:06:28	0	+0	2°
9	Tmp	20	7.247	09:29:43	09:29:54	0	+8	4°	67	Tmp	126	0.583	13:17:24	13:17:31	0	+4	2°
10	Tmp	20	8.875	09:32:30	09:32:31	0	+0	4°	68	Tmp	127	1.265	13:18:28	13:18:54	0	+23	2°
11	Tmp	24	1.784	09:39:37	09:39:37	0	+0	4°	69	Tmp	128	3.244	13:21:40	13:21:41	0	+0	2°
12	Tmp	25	2.622	09:42:05	09:42:43	0	+35	3°	70	Tmp	133	1.038	13:24:46	13:25:29	0	+40	3°
13	Tmp	25	3.122	09:44:05	09:45:47	0	+99	4°	71	Tmp	133	1.808	13:27:20	13:27:39	0	+16	4°
14	Tmp	26	3.479	09:45:28	09:47:12	0	+101	4°	72	Tmp	134	2.247	13:29:03	13:29:49	0	+43	4°
15	Tmp	27	3.949	09:46:51	09:48:22	0	+88	4°	73	Tmp	135	2.715	13:30:30	13:31:17	0	+44	4°
16	Tmp	30	5.142	09:49:10	09:50:49	0	+96	4°	74	Tmp	136	3.042	13:31:21	13:32:01	0	+37	4°
17	Tmp	35	2.078	10:02:17	10:07:40	0	+320	7°	75	Tmp	137	3.935	13:32:57	13:33:34	0	+34	4°
18	Tmp	37	3.208	10:04:03	10:09:33	0	+327	10°	76	Tmp	140	5.322	13:37:59	13:37:58	0	-0	4°
19	Tmp	42	8.878	10:11:27	10:16:35	0	+305	12°	77	Tmp	141	7.859	13:42:00	13:42:00	0	+0	4°
20	Tmp	47	2.382	10:16:12	10:20:41	0	+266	13°	78	Tmp	143	8.452	13:43:03	13:43:01	0	-0	4°
21	Tmp	49	4.920	10:19:18	10:23:10	0	+229	13°	79	Tmp	144	0.061	13:44:27	13:44:32	0	+2	3°
22	Tmp	50	8.401	10:23:36	10:26:11	0	+152	12°	80	Tmp	145	1.562	13:46:30	13:46:41	0	+8	3°
23	Tmp	52	0.201	10:26:11	10:28:30	0	+136	12°	81	Tmp	146	3.077	13:48:43	13:48:49	0	+3	3°
24	Tmp	54	2.350	10:29:29	10:31:32	0	+120	12°	82	Tmp	146	3.446	13:49:22	13:49:48	0	+23	3°
25	Tmp	58	0.230	10:35:14	10:35:12	0	-0	12°	83	Tmp	147	3.788	13:49:58	13:50:24	0	+23	3°
26	Tmp	60	1.457	10:37:06	10:37:12	0	+3	12°	84	Tmp	150	4.506	13:51:05	13:51:40	0	+32	3°
27	Tmp	60	1.887	10:37:47	10:37:46	0	-0	12°	85	Tmp	150	4.637	13:51:18	13:51:54	0	+33	3°
28	Tmp	64	3.320	10:40:24	10:40:34	0	+7	11°	86	Tmp	152	6.165	13:54:10	13:54:15	0	+2	2°
29	Tmp	66	4.183	10:42:04	10:42:14	0	+7	11°	87	Tmp	153	7.453	13:56:03	13:56:04	0	+0	2°
30	Tmp	69	5.179	10:43:57	10:43:53	0	-3	11°	88	Tmp	154	9.789	13:59:07	13:59:14	0	+4	2°
31	Tmp	72	8.898	10:49:05	10:49:17	0	+9	10°	89	Tmp	155	9.848	13:59:13	13:59:22	0	+6	2°
32	Tmp	73	0.331	10:50:29	10:50:48	0	+16	10°	90	Tmp	155	10.272	13:59:48	13:59:50	0	+0	2°
33	Tmp	74	1.352	10:52:34	10:52:44	0	+7	10°	<b>Etapa B</b>   Num 53   Pen 0   PCZ 21   Total PP 491   PG 22								
34	Tmp	75	1.883	10:53:40	10:53:51	0	+8	10°	Num 53   A 10°   PG 11   B 2°   PG 22   Tot PG 33   Col. 6°								
35	Tmp	75	2.771	10:55:11	10:55:20	0	+6	10°									
36	Tmp	75	3.774	10:56:55	10:56:59	0	+1	10°	<b>Etapa A</b>   Num 53   Pen 100   PCZ 8   Total PP 2614   PG 11								
37	Tmp	76	4.206	10:57:34	10:57:42	0	+5	10°	40 Tmp 84 3.419 12:14:25 12:14:25 0 +0 1°								
38	Tmp	76	5.470	10:59:25	10:59:35	0	+7	10°	41 Tmp 87 5.618 12:17:35 12:17:42 0 +4 2°								
39	Tmp	78	11.908	11:07:50	11:07:47	0	-0	10°	42 Tmp 88 6.046 12:18:22 12:18:35 0 +10 3°								
									43 Tmp 89 7.837 12:20:44 12:20:43 0 -0 3°								
									44 Tmp 90 10.102 12:23:28 12:23:17 0 -24 10°								
									45 Tmp 92 0.434 12:26:10 12:26:08 0 -0 8°								
									46 Tmp 94 1.558 12:27:47 12:27:46 0 -0 8°								
									47 Tmp 95 4.014 12:30:57 12:30:54 0 -0 8°								
									48 Tmp 96 5.897 12:33:32 12:33:31 0 -0 8°								
									49 Tmp 100 6.628 12:34:53 12:34:57 0 +1 7°								
									50 Tmp 101 7.581 12:36:48 12:36:46 0 -0 6°								
									51 Tmp 104 8.731 12:38:40 12:38:41 0 +0 5°								
									52 Tmp 105 9.934 12:40:38 12:40:39 0 +0 5°								
									53 Tmp 106 10.213 12:41:07 12:41:16 0 +6 3°								
									54 Tmp 108 0.550 12:42:12 12:42:28 0 +13 3°								
									55 Tmp 110 2.679 12:46:33 12:46:44 0 +8 2°								
									56 Tmp 111 2.980 12:47:33 12:47:47 0 +11 3°								
									57 Tmp 112 3.472 12:48:24 12:48:33 0 +6 3°								
									58 Tmp 112 3.601 12:48:40 12:48:59 0 +16 3°								

**Moto Clube / Princesa Off Road / Zaitec**

N u m	72	Equipe	72 / Ladislau Souza Freitas / Lau						
		Patrocinador	Stc, Loja do Lap Top						
		Cat / NL / Largada	JUNIOR / 39 / 08:51:00	Cidade	Salvador	Honda Crf-230			

PC	Tp	Trc	KmPC	Ideal	Passagem	Pen	Pontos	Col	PC	Tp	Trc	KmPC	Ideal	Passagem	Pen	Pontos	Col
1	Tmp	3	0.875	09:00:17	09:00:18	0	+0	8°	59	Tmp	112	4.100	12:44:42	12:46:24	0	+99	12°
2	Tmp	5	3.706	09:04:29	09:05:09	0	+37	5°	60	Tmp	115	6.288	12:50:45	12:50:43	0	-0	12°
3	Tmp	6	4.396	09:05:48	09:07:15	0	+84	5°	61	Tmp	117	7.265	12:52:12	12:52:13	0	+0	12°
4	Tmp	9	1.332	09:11:10	09:11:16	0	+3	5°	62	Tmp	117	8.149	12:53:25	12:53:23	0	-0	12°
5	Tmp	11	2.366	09:12:46	09:12:49	0	+0	5°	63	Tmp	118	10.030	12:55:53	12:55:52	0	-0	11°
6	Tmp	12	3.599	09:16:05	09:16:30	0	+22	5°	64	Tmp	118	12.744	12:59:25	12:59:26	0	+0	11°
7	Tmp	14	4.326	09:18:00	09:19:04	0	+61	6°	65	Tmp	121	0.603	13:00:34	13:00:41	0	+4	11°
8	Tmp	16	5.226	09:20:10	09:21:53	0	+100	9°	66	Tmp	122	1.180	13:01:26	13:01:39	0	+10	11°
9	Tmp	20	7.247	09:24:43	09:26:14	0	+88	10°	67	Tmp	126	0.583	13:12:24	13:12:28	0	+1	11°
10	Tmp	20	8.875	09:27:30	09:28:49	0	+76	10°	68	Tmp	127	1.265	13:13:28	13:14:45	0	+74	11°
11	Tmp	24	1.784	09:34:37	09:34:44	0	+4	10°	69	Tmp	128	3.244	13:16:40	13:17:49	0	+66	11°
12	Tmp	25	2.622	09:37:05	09:38:06	0	+58	10°	70	Tmp	133	1.038	13:19:46	13:21:01	0	+72	11°
13	Tmp	25	3.122	09:39:05	09:41:02	0	+114	9°	71	Tmp	133	1.808	13:22:20	13:23:49	0	+86	10°
14	Tmp	26	3.479	09:40:28	09:43:10	0	+159	9°	72	Tmp	134	2.247	13:24:03	13:26:32	0	+146	10°
15	Tmp	27	3.949	09:41:51	09:44:24	0	+150	9°	73	Tmp	135	2.715	13:25:30	13:28:15	0	+162	10°
16	Tmp	30	5.142	09:44:10	09:49:20	0	+307	10°	74	Tmp	136	3.042	13:26:21	13:29:10	0	+166	10°
17	Tmp	35	2.078	09:57:17	09:57:31	0	+11	10°	75	Tmp	137	3.935	13:27:57	13:31:03	0	+183	10°
18	Tmp	37	3.208	09:59:03	09:59:15	0	+9	9°	76	Tmp	140	5.322	13:32:59	13:33:15	0	+13	10°
19	Tmp	42	8.878	10:06:27	10:07:09	0	+39	8°	77	Tmp	141	7.859	13:37:00	13:37:23	0	+20	10°
20	Tmp	47	2.382	10:11:12	10:11:40	0	+25	8°	78	Tmp	143	8.452	13:38:03	13:38:32	0	+26	10°
21	Tmp	49	4.920	10:14:18	10:14:28	0	+7	7°	79	Tmp	144	0.061	13:39:27	13:40:18	0	+48	10°
22	Tmp	50	8.401	10:18:36	10:18:48	0	+9	7°	80	Tmp	145	1.562	13:41:30	13:42:35	0	+62	10°
23	Tmp	52	0.201	10:21:11	10:21:25	0	+11	7°	81	Tmp	146	3.077	13:43:43	13:45:02	0	+76	10°
24	Tmp	54	2.350	10:24:29	10:24:58	0	+26	8°	82	Tmp	146	3.446	13:44:22	13:46:05	0	+100	10°
25	Tmp	58	0.230	10:30:14	10:30:13	0	-0	8°	83	Tmp	147	3.788	13:44:58	13:46:48	0	+107	10°
26	Tmp	60	1.457	10:32:06	10:32:22	0	+13	8°	84	Tmp	150	4.506	13:46:05	13:47:59	0	+111	10°
27	Tmp	60	1.887	10:32:47	10:32:56	0	+6	8°	85	Tmp	150	4.637	13:46:18	13:48:25	0	+124	10°
28	Tmp	64	3.320	10:35:24	10:35:32	0	+5	7°	86	Tmp	152	6.165	13:49:10	13:52:33	0	+200	10°
29	Tmp	66	4.183	10:37:04	10:37:30	0	+23	7°	87	Tmp	153	7.453	13:51:03	13:54:55	0	+229	10°
30	Tmp	69	5.179	10:38:57	10:39:16	0	+16	7°	88	Tmp	154	9.789	13:54:07	13:57:54	0	+224	10°
31	Tmp	72	8.898	10:44:05	10:45:02	0	+54	7°	89	Tmp	155	9.848	13:54:13	13:58:03	0	+227	10°
32	Tmp	73	0.331	10:45:29	10:46:27	0	+55	7°	90	Tmp	155	10.272	13:54:48	13:58:40	0	+229	10°
33	Tmp	74	1.352	10:47:34	10:48:42	0	+65	7°	<b>Etapa B</b>   Num 72   Pen 0   PCZ 13   Total PP 3305   PG 11								
34	Tmp	75	1.883	10:48:40	10:49:48	0	+65	7°	Num 72   A 8°   PG 13   B 10°   PG 11   Tot PG 24   Col. 9°								
35	Tmp	75	2.771	10:50:11	10:51:16	0	+62	7°									
36	Tmp	75	3.774	10:51:55	10:52:50	0	+52	8°									
37	Tmp	76	4.206	10:52:34	10:53:31	0	+54	8°									
38	Tmp	76	5.470	10:54:25	10:55:29	0	+61	8°									
39	Tmp	78	11.908	11:02:50	11:02:47	0	-0	8°									

Etapa A	Num	72	Pen	0	PCZ	4	Total PP	1931	PG	13
40	Tmp	84	3.419	12:09:25	12:09:27	0	+0	9°		
41	Tmp	87	5.618	12:12:35	12:12:50	0	+12	10°		
42	Tmp	88	6.046	12:13:22	12:13:43	0	+18	10°		
43	Tmp	89	7.837	12:15:44	12:15:45	0	+0	10°		
44	Tmp	90	10.102	12:18:28	12:18:23	0	-6	7°		
45	Tmp	92	0.434	12:21:10	12:21:11	0	+0	7°		
46	Tmp	94	1.558	12:22:47	12:22:48	0	+0	7°		
47	Tmp	95	4.014	12:25:57	12:25:55	0	-0	7°		
48	Tmp	96	5.897	12:28:32	12:28:31	0	-0	7°		
49	Tmp	100	6.628	12:29:53	12:29:55	0	+0	6°		
50	Tmp	101	7.581	12:31:48	12:31:46	0	-0	5°		
51	Tmp	104	8.731	12:33:40	12:33:48	0	+5	6°		
52	Tmp	105	9.934	12:35:38	12:35:59	0	+18	10°		
53	Tmp	106	10.213	12:36:07	12:36:40	0	+30	10°		
54	Tmp	108	0.550	12:37:12	12:37:56	0	+41	11°		
55	Tmp	110	2.679	12:41:33	12:42:33	0	+57	11°		
56	Tmp	111	2.980	12:42:33	12:43:46	0	+70	11°		
57	Tmp	112	3.472	12:43:24	12:44:50	0	+83	12°		
58	Tmp	112	3.601	12:43:40	12:45:23	0	+100	12°		

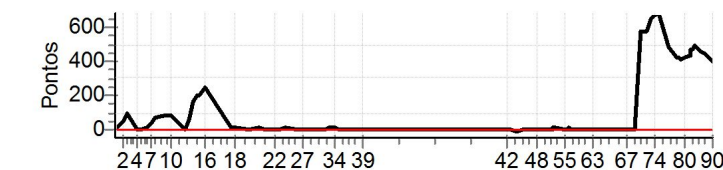
**Moto Clube / Princesa Off Road / Zaitec**



<b>N u m</b>	<b>77</b>	<b>Equipe</b>	77 / Yuri de Araujo Guimaraes / Pau de Lodo						
		<b>Patrocinador</b>	Princesa Off-road						
		<b>Cat / NL / Largada</b>	JUNIOR / 46 / 08:54:30	<b>Cidade</b>	Feira de Santana	<b>Gas Gas Ec 250</b>			

PC	Tp	Trc	KmPC	Ideal	Passagem	Pen	Pontos	Col	PC	Tp	Trc	KmPC	Ideal	Passagem	Pen	Pontos	Col
1	Tmp	3	0.875	09:03:47	09:03:48	0	+0	2°	59	Tmp	112	4.100	12:48:12	12:48:21	0	+6	1°
2	Tmp	5	3.706	09:07:59	09:08:54	0	+52	7°	60	Tmp	115	6.288	12:54:15	12:54:18	0	+0	1°
3	Tmp	6	4.396	09:09:18	09:10:55	0	+94	6°	61	Tmp	117	7.265	12:55:42	12:55:44	0	+0	1°
4	Tmp	9	1.332	09:14:40	09:14:42	0	+0	6°	62	Tmp	117	8.149	12:56:55	12:56:54	0	-0	1°
5	Tmp	11	2.366	09:16:16	09:16:21	0	+2	6°	63	Tmp	118	10.030	12:59:23	12:59:22	0	-0	1°
6	Tmp	12	3.599	09:19:35	09:19:47	0	+9	6°	64	Tmp	118	12.744	13:02:55	13:02:57	0	+0	1°
7	Tmp	14	4.326	09:21:30	09:22:06	0	+33	4°	65	Tmp	121	0.603	13:04:04	13:04:02	0	-0	1°
8	Tmp	16	5.226	09:23:40	09:25:00	0	+77	5°	66	Tmp	122	1.180	13:04:56	13:04:57	0	+0	1°
9	Tmp	20	7.247	09:28:13	09:29:39	0	+83	7°	67	Tmp	126	0.583	13:15:54	13:15:55	0	+0	1°
10	Tmp	20	8.875	09:31:00	09:32:25	0	+82	9°	68	Tmp	127	1.265	13:16:58	13:17:09	0	+8	1°
11	Tmp	24	1.784	09:38:07	09:38:12	0	+2	9°	69	Tmp	128	3.244	13:20:10	13:20:09	0	-0	1°
12	Tmp	25	2.622	09:40:35	09:41:41	0	+63	9°	70	Tmp	133	1.038	13:23:16	13:32:53	0	+574	10°
13	Tmp	25	3.122	09:42:35	09:45:29	0	+171	10°	71	Tmp	133	1.808	13:25:50	13:35:28	0	+575	12°
14	Tmp	26	3.479	09:43:58	09:47:28	0	+207	11°	72	Tmp	134	2.247	13:27:33	13:38:27	0	+651	12°
15	Tmp	27	3.949	09:45:21	09:48:47	0	+203	11°	73	Tmp	135	2.715	13:29:00	13:40:05	0	+662	12°
16	Tmp	30	5.142	09:47:40	09:51:57	0	+254	11°	74	Tmp	136	3.042	13:29:51	13:41:07	0	+673	12°
17	Tmp	35	2.078	10:00:47	10:01:05	0	+15	11°	75	Tmp	137	3.935	13:31:27	13:42:52	0	+682	12°
18	Tmp	37	3.208	10:02:33	10:02:45	0	+9	11°	76	Tmp	140	5.322	13:36:29	13:44:34	0	+482	12°
19	Tmp	42	8.878	10:09:57	10:10:04	0	+4	9°	77	Tmp	141	7.859	13:40:30	13:47:37	0	+424	12°
20	Tmp	47	2.382	10:14:42	10:14:58	0	+13	9°	78	Tmp	143	8.452	13:41:33	13:48:38	0	+422	12°
21	Tmp	49	4.920	10:17:48	10:17:48	0	+0	8°	79	Tmp	144	0.061	13:42:57	13:49:58	0	+418	12°
22	Tmp	50	8.401	10:22:06	10:22:15	0	+6	8°	80	Tmp	145	1.562	13:45:00	13:52:12	0	+429	12°
23	Tmp	52	0.201	10:24:41	10:24:46	0	+2	8°	81	Tmp	146	3.077	13:47:13	13:54:31	0	+435	12°
24	Tmp	54	2.350	10:27:59	10:28:11	0	+9	7°	82	Tmp	146	3.446	13:47:52	13:55:44	0	+469	12°
25	Tmp	58	0.230	10:33:44	10:33:45	0	+0	7°	83	Tmp	147	3.788	13:48:28	13:56:28	0	+477	12°
26	Tmp	60	1.457	10:35:36	10:35:42	0	+3	7°	84	Tmp	150	4.506	13:49:35	13:57:50	0	+492	12°
27	Tmp	60	1.887	10:36:17	10:36:19	0	+0	7°	85	Tmp	150	4.637	13:49:48	13:58:03	0	+492	12°
28	Tmp	64	3.320	10:38:54	10:38:59	0	+2	6°	86	Tmp	152	6.165	13:52:40	14:00:27	0	+464	12°
29	Tmp	66	4.183	10:40:34	10:40:39	0	+2	6°	87	Tmp	153	7.453	13:54:33	14:02:08	0	+452	12°
30	Tmp	69	5.179	10:42:27	10:42:38	0	+8	6°	88	Tmp	154	9.789	13:57:37	14:04:29	0	+409	12°
31	Tmp	72	8.898	10:47:35	10:47:42	0	+4	6°	89	Tmp	155	9.848	13:57:43	14:04:36	0	+410	12°
32	Tmp	73	0.331	10:48:59	10:49:16	0	+14	6°	90	Tmp	155	10.272	13:58:18	14:05:06	0	+405	12°
33	Tmp	74	1.352	10:51:04	10:51:19	0	+12	6°	<b>Etapa B</b> Num 77 Pen 0 PCZ 19 Total PP 10585 PG 9								
34	Tmp	75	1.883	10:52:10	10:52:25	0	+12	6°	Num 77 A 5° PG 16 B 12° PG 9 Tot PG 25 Col. 8°								
35	Tmp	75	2.771	10:53:41	10:53:48	0	+4	6°									
36	Tmp	75	3.774	10:55:25	10:55:31	0	+3	6°									
37	Tmp	76	4.206	10:56:04	10:56:09	0	+2	6°									
38	Tmp	76	5.470	10:57:55	10:58:01	0	+3	5°									
39	Tmp	78	11.908	11:06:20	11:06:22	0	+0	5°									

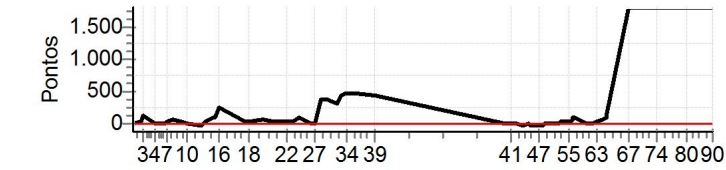
Etapa A	Num	77	Pen	0	PCZ	6	Total PP	1459	PG	16
40	Tmp	84	3.419	12:12:55	12:12:55	0	+0	4°		
41	Tmp	87	5.618	12:16:05	12:16:12	0	+4	3°		
42	Tmp	88	6.046	12:16:52	12:16:57	0	+2	2°		
43	Tmp	89	7.837	12:19:14	12:19:15	0	+0	2°		
44	Tmp	90	10.102	12:21:58	12:21:52	0	-9	2°		
45	Tmp	92	0.434	12:24:40	12:24:40	0	+0	2°		
46	Tmp	94	1.558	12:26:17	12:26:18	0	+0	2°		
47	Tmp	95	4.014	12:29:27	12:29:26	0	-0	2°		
48	Tmp	96	5.897	12:32:02	12:32:03	0	+0	2°		
49	Tmp	100	6.628	12:33:23	12:33:26	0	+0	1°		
50	Tmp	101	7.581	12:35:18	12:35:19	0	+0	1°		
51	Tmp	104	8.731	12:37:10	12:37:13	0	+0	1°		
52	Tmp	105	9.934	12:39:08	12:39:17	0	+6	1°		
53	Tmp	106	10.213	12:39:37	12:39:52	0	+12	1°		
54	Tmp	108	0.550	12:40:42	12:40:59	0	+14	1°		
55	Tmp	110	2.679	12:45:03	12:45:11	0	+5	1°		
56	Tmp	111	2.980	12:46:03	12:46:04	0	+0	1°		
57	Tmp	112	3.472	12:46:54	12:47:05	0	+8	1°		
58	Tmp	112	3.601	12:47:10	12:47:27	0	+14	1°		



**Moto Clube / Princesa Off Road / Zaitec**

<b>N u m</b>	<b>122</b>	<b>Equipe</b>	122 / Grimaldo Ferreira Oliveira / Pangare						
		<b>Patrocinador</b>	Marmoraria Ipiau, Www.terremototrailclube.com.br						
		<b>Cat / NL / Largada</b>	JUNIOR / 47 / 08:55:00			<b>Cidade</b>	Ipiau		Honda Crf-230

PC	Tp	Trc	KmPC	Ideal	Passagem	Pen	Pontos	Col	PC	Tp	Trc	KmPC	Ideal	Passagem	Pen	Pontos	Col
1	Tmp	3	0.875	09:04:17	09:04:20	0	+0	1°	59	Tmp	112	4.100	12:48:42	12:50:16	0	+91	11°
2	Tmp	5	3.706	09:08:29	09:09:16	0	+44	6°	60	Tmp	115	6.288	12:54:45	12:54:49	0	+1	11°
3	Tmp	6	4.396	09:09:48	09:12:08	0	+137	8°	61	Tmp	117	7.265	12:56:12	12:56:32	0	+17	11°
4	Tmp	9	1.332	09:15:10	09:15:10	0	+0	8°	62	Tmp	117	8.149	12:57:25	12:57:52	0	+24	11°
5	Tmp	11	2.366	09:16:46	09:16:48	0	+0	8°	63	Tmp	118	10.030	12:59:53	13:00:47	0	+51	12°
6	Tmp	12	3.599	09:20:05	09:20:11	0	+3	8°	64	Tmp	118	12.744	13:03:25	13:04:37	0	+69	12°
7	Tmp	14	4.326	09:22:00	09:22:30	0	+27	8°	65	Tmp	121	0.603	13:04:34	13:06:15	0	+98	12°
8	Tmp	16	5.226	09:24:10	09:25:10	0	+57	6°	66	Tmp	122	1.180	13:05:26	13:08:19	0	+170	13°
9	Tmp	20	7.247	09:28:43	09:29:27	0	+41	5°	67	Tmp	126	0.583	13:16:24		0	+1800	13°
10	Tmp	20	8.875	09:31:30	09:31:57	0	+24	5°	68	Tmp	127	1.265	13:17:28		0	+1800	13°
11	Tmp	24	1.784	09:38:37	09:38:31	0	-9	5°	69	Tmp	128	3.244	13:20:40		0	+1800	13°
12	Tmp	25	2.622	09:41:05	09:41:40	0	+32	5°	70	Tmp	133	1.038	13:23:46		0	+1800	13°
13	Tmp	25	3.122	09:43:05	09:44:33	0	+85	6°	71	Tmp	133	1.808	13:26:20		0	+1800	13°
14	Tmp	26	3.479	09:44:28	09:46:04	0	+93	6°	72	Tmp	134	2.247	13:28:03		0	+1800	13°
15	Tmp	27	3.949	09:45:51	09:47:23	0	+89	6°	73	Tmp	135	2.715	13:29:30		0	+1800	13°
16	Tmp	30	5.142	09:48:10	09:52:29	0	+256	6°	74	Tmp	136	3.042	13:30:21		0	+1800	13°
17	Tmp	35	2.078	10:01:17	10:01:52	0	+32	5°	75	Tmp	137	3.935	13:31:57		0	+1800	13°
18	Tmp	37	3.208	10:03:03	10:03:58	0	+52	6°	76	Tmp	140	5.322	13:36:59		0	+1800	13°
19	Tmp	42	8.878	10:10:27	10:11:44	0	+74	6°	77	Tmp	141	7.859	13:41:00		0	+1800	13°
20	Tmp	47	2.382	10:15:12	10:16:08	0	+53	6°	78	Tmp	143	8.452	13:42:03		0	+1800	14°
21	Tmp	49	4.920	10:18:18	10:19:00	0	+39	6°	79	Tmp	144	0.061	13:43:27		0	+1800	14°
22	Tmp	50	8.401	10:22:36	10:23:18	0	+39	6°	80	Tmp	145	1.562	13:45:30		0	+1800	14°
23	Tmp	52	0.201	10:25:11	10:25:50	0	+36	6°	81	Tmp	146	3.077	13:47:43		0	+1800	14°
24	Tmp	54	2.350	10:28:29	10:30:10	0	+98	6°	82	Tmp	146	3.446	13:48:22		0	+1800	14°
25	Tmp	58	0.230	10:34:14	10:34:11	0	-0	6°	83	Tmp	147	3.788	13:48:58		0	+1800	14°
26	Tmp	60	1.457	10:36:06	10:36:16	0	+7	6°	84	Tmp	150	4.506	13:50:05		0	+1800	14°
27	Tmp	60	1.887	10:36:47	10:36:49	0	+0	6°	85	Tmp	150	4.637	13:50:18		0	+1800	14°
28	Tmp	64	3.320	10:39:24	10:45:49	0	+382	10°	86	Tmp	152	6.165	13:53:10		0	+1800	14°
29	Tmp	66	4.183	10:41:04	10:47:39	0	+392	10°	87	Tmp	153	7.453	13:55:03		0	+1800	14°
30	Tmp	69	5.179	10:42:57	10:49:09	0	+369	10°	88	Tmp	154	9.789	13:58:07		0	+1800	14°
31	Tmp	72	8.898	10:48:05	10:53:35	0	+327	11°	89	Tmp	155	9.848	13:58:13		0	+1800	14°
32	Tmp	73	0.331	10:49:29	10:57:01	0	+449	11°	90	Tmp	155	10.272	13:58:48		0	+1800	14°
33	Tmp	74	1.352	10:51:34	10:59:16	0	+459	11°	<b>Etapa B</b> Num 122 Pen 0 PCZ 5 Total PP 44098 PG 7								
34	Tmp	75	1.883	10:52:40	11:00:30	0	+467	11°	Num 122 A 11° PG 10 B 14° PG 7 Tot PG 17 Col. 13°								
35	Tmp	75	2.771	10:54:11	11:02:05	0	+471	11°									
36	Tmp	75	3.774	10:55:55	11:03:59	0	+481	11°									
37	Tmp	76	4.206	10:56:34	11:04:38	0	+481	11°									
38	Tmp	76	5.470	10:58:25	11:06:33	0	+485	11°									
39	Tmp	78	11.908	11:06:50	11:14:22	0	+449	11°									



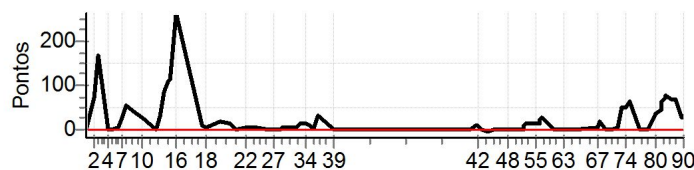
**Moto Clube / Princesa Off Road / Zaitec**

Etapa A	Num	122	Pen	0	PCZ	5	Total PP	6539	PG	10
40	Tmp	84	3.419	12:13:25	12:13:24	0	-0	3°		
41	Tmp	87	5.618	12:16:35	12:16:44	0	+6	4°		
42	Tmp	88	6.046	12:17:22	12:17:42	0	+17	6°		
43	Tmp	89	7.837	12:19:44	12:19:40	0	-3	7°		
44	Tmp	90	10.102	12:22:28	12:22:18	0	-21	12°		
45	Tmp	92	0.434	12:25:10	12:25:06	0	-3	12°		
46	Tmp	94	1.558	12:26:47	12:26:42	0	-6	12°		
47	Tmp	95	4.014	12:29:57	12:29:50	0	-12	13°		
48	Tmp	96	5.897	12:32:32	12:32:25	0	-12	13°		
49	Tmp	100	6.628	12:33:53	12:33:52	0	-0	13°		
50	Tmp	101	7.581	12:35:48	12:35:48	0	+0	13°		
51	Tmp	104	8.731	12:37:40	12:37:41	0	+0	11°		
52	Tmp	105	9.934	12:39:38	12:39:40	0	+0	11°		
53	Tmp	106	10.213	12:40:07	12:40:22	0	+12	11°		
54	Tmp	108	0.550	12:41:12	12:41:43	0	+28	10°		
55	Tmp	110	2.679	12:45:33	12:46:19	0	+43	10°		
56	Tmp	111	2.980	12:46:33	12:47:26	0	+50	10°		
57	Tmp	112	3.472	12:47:24	12:48:38	0	+71	10°		
58	Tmp	112	3.601	12:47:40	12:49:16	0	+93	11°		

<b>N u m</b>	<b>129</b>	<b>Equipe</b>	129 / Evanilton da Silva Reis / Vani						
		<b>Patrocinador</b>	Pitanga do Vale						
		<b>Cat / NL / Largada</b>	JUNIOR / 40 / 08:51:30	<b>Cidade</b>	Camacari	Yamaha Wr-450f			

PC	Tp	Trc	KmPC	Ideal	Passagem	Pen	Pontos	Col	PC	Tp	Trc	KmPC	Ideal	Passagem	Pen	Pontos	Col
1	Tmp	3	0.875	09:00:47	09:00:48	0	+0	7°	59	Tmp	112	4.100	12:45:12	12:45:45	0	+30	5°
2	Tmp	5	3.706	09:04:59	09:06:16	0	+74	11°	60	Tmp	115	6.288	12:51:15	12:51:17	0	+0	5°
3	Tmp	6	4.396	09:06:18	09:09:11	0	+170	12°	61	Tmp	117	7.265	12:52:42	12:52:48	0	+3	5°
4	Tmp	9	1.332	09:11:40	09:11:44	0	+1	12°	62	Tmp	117	8.149	12:53:55	12:53:53	0	-0	5°
5	Tmp	11	2.366	09:13:16	09:13:21	0	+2	12°	63	Tmp	118	10.030	12:56:23	12:56:23	0	+0	5°
6	Tmp	12	3.599	09:16:35	09:16:44	0	+6	12°	64	Tmp	118	12.744	12:59:55	12:59:57	0	+0	5°
7	Tmp	14	4.326	09:18:30	09:19:04	0	+31	11°	65	Tmp	121	0.603	13:01:04	13:01:07	0	+0	5°
8	Tmp	16	5.226	09:20:40	09:21:41	0	+58	10°	66	Tmp	122	1.180	13:01:56	13:02:01	0	+2	5°
9	Tmp	20	7.247	09:25:13	09:25:56	0	+40	9°	67	Tmp	126	0.583	13:12:54	13:13:01	0	+4	5°
10	Tmp	20	8.875	09:28:00	09:28:31	0	+28	8°	68	Tmp	127	1.265	13:13:58	13:14:19	0	+18	5°
11	Tmp	24	1.784	09:35:07	09:35:06	0	-0	8°	69	Tmp	128	3.244	13:17:10	13:17:10	0	+0	5°
12	Tmp	25	2.622	09:37:35	09:38:10	0	+32	7°	70	Tmp	133	1.038	13:20:16	13:20:17	0	+0	4°
13	Tmp	25	3.122	09:39:35	09:41:06	0	+88	7°	71	Tmp	133	1.808	13:22:50	13:22:58	0	+5	3°
14	Tmp	26	3.479	09:40:58	09:42:54	0	+113	7°	72	Tmp	134	2.247	13:24:33	13:25:26	0	+50	3°
15	Tmp	27	3.949	09:42:21	09:44:20	0	+116	7°	73	Tmp	135	2.715	13:26:00	13:26:56	0	+53	5°
16	Tmp	30	5.142	09:44:40	09:49:09	0	+266	8°	74	Tmp	136	3.042	13:26:51	13:27:44	0	+50	6°
17	Tmp	35	2.078	09:57:47	09:58:01	0	+11	8°	75	Tmp	137	3.935	13:28:27	13:29:37	0	+67	6°
18	Tmp	37	3.208	09:59:33	09:59:42	0	+6	7°	76	Tmp	140	5.322	13:33:29	13:33:27	0	-0	6°
19	Tmp	42	8.878	10:06:57	10:07:22	0	+22	7°	77	Tmp	141	7.859	13:37:30	13:37:36	0	+3	6°
20	Tmp	47	2.382	10:11:42	10:12:02	0	+17	5°	78	Tmp	143	8.452	13:38:33	13:38:45	0	+9	6°
21	Tmp	49	4.920	10:14:48	10:14:52	0	+1	5°	79	Tmp	144	0.061	13:39:57	13:40:21	0	+21	6°
22	Tmp	50	8.401	10:19:06	10:19:14	0	+5	5°	80	Tmp	145	1.562	13:42:00	13:42:42	0	+39	6°
23	Tmp	52	0.201	10:21:41	10:21:49	0	+5	5°	81	Tmp	146	3.077	13:44:13	13:45:03	0	+47	7°
24	Tmp	54	2.350	10:24:59	10:25:07	0	+5	5°	82	Tmp	146	3.446	13:44:52	13:46:00	0	+65	7°
25	Tmp	58	0.230	10:30:44	10:30:49	0	+2	5°	83	Tmp	147	3.788	13:45:28	13:46:43	0	+72	7°
26	Tmp	60	1.457	10:32:36	10:32:41	0	+2	5°	84	Tmp	150	4.506	13:46:35	13:47:53	0	+75	7°
27	Tmp	60	1.887	10:33:17	10:33:19	0	+0	5°	85	Tmp	150	4.637	13:46:48	13:48:08	0	+77	7°
28	Tmp	64	3.320	10:35:54	10:36:00	0	+3	5°	86	Tmp	152	6.165	13:49:40	13:50:53	0	+70	7°
29	Tmp	66	4.183	10:37:34	10:37:42	0	+5	5°	87	Tmp	153	7.453	13:51:33	13:52:44	0	+68	7°
30	Tmp	69	5.179	10:39:27	10:39:35	0	+5	5°	88	Tmp	154	9.789	13:54:37	13:55:11	0	+31	7°
31	Tmp	72	8.898	10:44:35	10:44:42	0	+4	5°	89	Tmp	155	9.848	13:54:43	13:55:18	0	+32	7°
32	Tmp	73	0.331	10:45:59	10:46:15	0	+13	5°	90	Tmp	155	10.272	13:55:18	13:55:49	0	+28	7°
33	Tmp	74	1.352	10:48:04	10:48:23	0	+16	4°	<b>Etapa B</b> Num 129 Pen 0 PCZ 15 Total PP 1046 PG 14								
34	Tmp	75	1.883	10:49:10	10:49:28	0	+15	4°	Num 129 A 4° PG 18 B 7° PG 14 Tot PG 32 Col. 7°								
35	Tmp	75	2.771	10:50:41	10:50:56	0	+12	4°									
36	Tmp	75	3.774	10:52:25	10:52:32	0	+4	4°									
37	Tmp	76	4.206	10:53:04	10:53:13	0	+6	4°									
38	Tmp	76	5.470	10:54:55	10:55:31	0	+33	4°									
39	Tmp	78	11.908	11:03:20	11:03:23	0	+0	4°									

Etapa A	Num	129	Pen	0	PCZ	4	Total PP	1217	PG	18
40	Tmp	84	3.419	12:09:55	12:09:58	0	+0	8°		
41	Tmp	87	5.618	12:13:05	12:13:17	0	+9	7°		
42	Tmp	88	6.046	12:13:52	12:14:06	0	+11	5°		
43	Tmp	89	7.837	12:16:14	12:16:16	0	+0	5°		
44	Tmp	90	10.102	12:18:58	12:18:54	0	-3	3°		
45	Tmp	92	0.434	12:21:40	12:21:43	0	+0	3°		
46	Tmp	94	1.558	12:23:17	12:23:16	0	-0	3°		
47	Tmp	95	4.014	12:26:27	12:26:27	0	+0	3°		
48	Tmp	96	5.897	12:29:02	12:29:02	0	+0	3°		
49	Tmp	100	6.628	12:30:23	12:30:27	0	+1	2°		
50	Tmp	101	7.581	12:32:18	12:32:18	0	+0	2°		
51	Tmp	104	8.731	12:34:10	12:34:14	0	+1	2°		
52	Tmp	105	9.934	12:36:08	12:36:14	0	+3	2°		
53	Tmp	106	10.213	12:36:37	12:36:52	0	+12	2°		
54	Tmp	108	0.550	12:37:42	12:37:59	0	+14	2°		
55	Tmp	110	2.679	12:42:03	12:42:20	0	+14	3°		
56	Tmp	111	2.980	12:43:03	12:43:23	0	+17	4°		
57	Tmp	112	3.472	12:43:54	12:44:13	0	+16	5°		
58	Tmp	112	3.601	12:44:10	12:44:39	0	+26	5°		

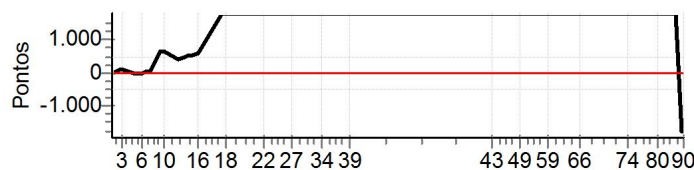


**Moto Clube / Princesa Off Road / Zaitec**

<b>N</b> <b>u</b> <b>m</b>	<b>130</b>	<b>Equipe</b>	130 / Matheus Dultra Barros / Theu						
		<b>Patrocinador</b>	Condimentos Sabor da Chapada, Jacaré Motos, Pref I						
		<b>Cat / NL / Largada</b>	JUNIOR / 36 / 08:49:30			<b>Cidade</b>	Itaberaba		Honda Crf-230

PC	Tp	Trc	KmPC	Ideal	Passagem	Pen	Pontos	Col	PC	Tp	Trc	KmPC	Ideal	Passagem	Pen	Pontos	Col
1	Tmp	3	0.875	08:58:47	08:58:46	0	-0	15°	59	Tmp	112	4.100	12:43:12		0	+1800	15°
2	Tmp	5	3.706	09:02:59	09:04:37	0	+95	16°	60	Tmp	115	6.288	12:49:15		0	+1800	15°
3	Tmp	6	4.396	09:04:18	09:06:16	0	+115	16°	61	Tmp	117	7.265	12:50:42		0	+1800	15°
4	Tmp	9	1.332	09:09:40	09:09:40	0	+0	16°	62	Tmp	117	8.149	12:51:55		0	+1800	15°
5	Tmp	11	2.366	09:11:16	09:11:16	0	+0	16°	63	Tmp	118	10.030	12:54:23		0	+1800	15°
6	Tmp	12	3.599	09:14:35	09:14:38	0	+0	16°	64	Tmp	118	12.744	12:57:55		0	+1800	15°
7	Tmp	14	4.326	09:16:30	09:17:00	0	+27	16°	65	Tmp	121	0.603	12:59:04		0	+1800	15°
8	Tmp	16	5.226	09:18:40	09:19:35	0	+52	15°	66	Tmp	122	1.180	12:59:56		0	+1800	15°
9	Tmp	20	7.247	09:23:13	09:33:43	0	+627	15°	67	Tmp	126	0.583	13:10:54		0	+1800	15°
10	Tmp	20	8.875	09:26:00	09:36:30	0	+627	15°	68	Tmp	127	1.265	13:11:58		0	+1800	15°
11	Tmp	24	1.784	09:33:07	09:39:56	0	+406	15°	69	Tmp	128	3.244	13:15:10		0	+1800	15°
12	Tmp	25	2.622	09:35:35	09:43:17	0	+459	15°	70	Tmp	133	1.038	13:18:16		0	+1800	15°
13	Tmp	25	3.122	09:37:35	09:46:16	0	+518	15°	71	Tmp	133	1.808	13:20:50		0	+1800	15°
14	Tmp	26	3.479	09:38:58	09:47:59	0	+538	15°	72	Tmp	134	2.247	13:22:33		0	+1800	15°
15	Tmp	27	3.949	09:40:21	09:49:22	0	+538	15°	73	Tmp	135	2.715	13:24:00		0	+1800	15°
16	Tmp	30	5.142	09:42:40	09:52:24	0	+581	15°	74	Tmp	136	3.042	13:24:51		0	+1800	15°
17	Tmp	35	2.078	09:55:47		0	+1800	15°	75	Tmp	137	3.935	13:26:27		0	+1800	15°
18	Tmp	37	3.208	09:57:33		0	+1800	15°	76	Tmp	140	5.322	13:31:29		0	+1800	15°
19	Tmp	42	8.878	10:04:57		0	+1800	15°	77	Tmp	141	7.859	13:35:30		0	+1800	15°
20	Tmp	47	2.382	10:09:42		0	+1800	15°	78	Tmp	143	8.452	13:36:33		0	+1800	15°
21	Tmp	49	4.920	10:12:48		0	+1800	15°	79	Tmp	144	0.061	13:37:57		0	+1800	15°
22	Tmp	50	8.401	10:17:06		0	+1800	15°	80	Tmp	145	1.562	13:40:00		0	+1800	15°
23	Tmp	52	0.201	10:19:41		0	+1800	15°	81	Tmp	146	3.077	13:42:13		0	+1800	15°
24	Tmp	54	2.350	10:22:59		0	+1800	15°	82	Tmp	146	3.446	13:42:52		0	+1800	15°
25	Tmp	58	0.230	10:28:44		0	+1800	15°	83	Tmp	147	3.788	13:43:28		0	+1800	15°
26	Tmp	60	1.457	10:30:36		0	+1800	15°	84	Tmp	150	4.506	13:44:35		0	+1800	15°
27	Tmp	60	1.887	10:31:17		0	+1800	15°	85	Tmp	150	4.637	13:44:48		0	+1800	15°
28	Tmp	64	3.320	10:33:54		0	+1800	15°	86	Tmp	152	6.165	13:47:40		0	+1800	15°
29	Tmp	66	4.183	10:35:34		0	+1800	15°	87	Tmp	153	7.453	13:49:33		0	+1800	15°
30	Tmp	69	5.179	10:37:27		0	+1800	15°	88	Tmp	154	9.789	13:52:37	10:33:39	0	-1800	15°
31	Tmp	72	8.898	10:42:35		0	+1800	15°	89	Tmp	155	9.848	13:52:43	10:33:45	0	-1800	15°
32	Tmp	73	0.331	10:43:59		0	+1800	15°	90	Tmp	155	10.272	13:53:18	10:35:28	0	-1800	15°
33	Tmp	74	1.352	10:46:04		0	+1800	15°	<b>Etapa B</b> Num 130 Pen 0 PCZ 0 Total PP 91800 PG 0								
34	Tmp	75	1.883	10:47:10		0	+1800	15°	Num 130 A NC PG 0 B NC PG 0 Tot PG 0 Col. 15°								
35	Tmp	75	2.771	10:48:41		0	+1800	15°									
36	Tmp	75	3.774	10:50:25		0	+1800	15°									
37	Tmp	76	4.206	10:51:04		0	+1800	15°									
38	Tmp	76	5.470	10:52:55		0	+1800	15°									
39	Tmp	78	11.908	11:01:20		0	+1800	15°									

<b>Etapa A</b>		Num	130	Pen	0	PCZ	4	Total PP	45983	PG	0
40	Tmp	84	3.419	12:07:55		0	+1800	15°			
41	Tmp	87	5.618	12:11:05		0	+1800	15°			
42	Tmp	88	6.046	12:11:52		0	+1800	15°			
43	Tmp	89	7.837	12:14:14		0	+1800	15°			
44	Tmp	90	10.102	12:16:58		0	+1800	15°			
45	Tmp	92	0.434	12:19:40		0	+1800	15°			
46	Tmp	94	1.558	12:21:17		0	+1800	15°			
47	Tmp	95	4.014	12:24:27		0	+1800	15°			
48	Tmp	96	5.897	12:27:02		0	+1800	15°			
49	Tmp	100	6.628	12:28:23		0	+1800	15°			
50	Tmp	101	7.581	12:30:18		0	+1800	15°			
51	Tmp	104	8.731	12:32:10		0	+1800	15°			
52	Tmp	105	9.934	12:34:08		0	+1800	15°			
53	Tmp	106	10.213	12:34:37		0	+1800	15°			
54	Tmp	108	0.550	12:35:42		0	+1800	15°			
55	Tmp	110	2.679	12:40:03		0	+1800	15°			
56	Tmp	111	2.980	12:41:03		0	+1800	15°			
57	Tmp	112	3.472	12:41:54		0	+1800	15°			
58	Tmp	112	3.601	12:42:10		0	+1800	15°			



**Moto Clube / Princesa Off Road / Zaitec**



<b>N u m</b>	<b>131</b>	<b>Equipe</b>	131 / Edilton de Oliveira Teles / Muqueca						
		<b>Patrocinador</b>	Katinha Queiroz						
		<b>Cat / NL / Largada</b>	JUNIOR / 34 / 08:48:30	<b>Cidade</b>	Sto Ant de Jesus	Honda Tornado			

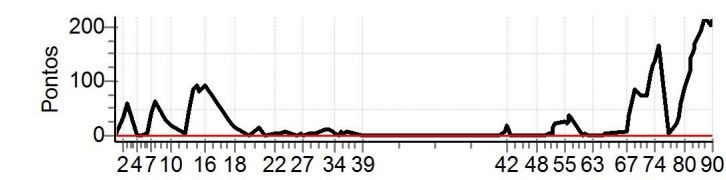
PC	Tp	Trc	KmPC	Ideal	Passagem	Pen	Pontos	Col	PC	Tp	Trc	KmPC	Ideal	Passagem	Pen	Pontos	Col
1	Tmp	3	0.875	08:57:47	08:57:50	0	+0	11°	59	Tmp	112	4.100	12:42:12	12:42:22	0	+7	4°
2	Tmp	5	3.706	09:01:59	09:02:25	0	+23	1°	60	Tmp	115	6.288	12:48:15	12:48:18	0	+0	4°
3	Tmp	6	4.396	09:03:18	09:04:18	0	+57	2°	61	Tmp	117	7.265	12:49:42	12:49:44	0	+0	3°
4	Tmp	9	1.332	09:08:40	09:08:46	0	+3	2°	62	Tmp	117	8.149	12:50:55	12:50:58	0	+0	3°
5	Tmp	11	2.366	09:10:16	09:10:19	0	+0	2°	63	Tmp	118	10.030	12:53:23	12:53:22	0	-0	3°
6	Tmp	12	3.599	09:13:35	09:13:35	0	+0	2°	64	Tmp	118	12.744	12:56:55	12:56:56	0	+0	3°
7	Tmp	14	4.326	09:15:30	09:15:46	0	+13	2°	65	Tmp	121	0.603	12:58:04	12:58:06	0	+0	3°
8	Tmp	16	5.226	09:17:40	09:18:05	0	+22	2°	66	Tmp	122	1.180	12:58:56	12:59:00	0	+1	3°
9	Tmp	20	7.247	09:22:13	09:22:08	0	-6	2°	67	Tmp	126	0.583	13:09:54	13:10:01	0	+4	3°
10	Tmp	20	8.875	09:25:00	09:25:00	0	+0	2°	68	Tmp	127	1.265	13:10:58	13:11:24	0	+23	3°
11	Tmp	24	1.784	09:32:07	09:32:10	0	+0	2°	69	Tmp	128	3.244	13:14:10	13:14:10	0	+0	3°
12	Tmp	25	2.622	09:34:35	09:34:45	0	+7	1°	70	Tmp	133	1.038	13:17:16	13:17:20	0	+1	1°
13	Tmp	25	3.122	09:36:35	09:36:53	0	+15	1°	71	Tmp	133	1.808	13:19:50	13:19:50	0	+0	1°
14	Tmp	26	3.479	09:37:58	09:38:10	0	+9	1°	72	Tmp	134	2.247	13:21:33	13:21:36	0	+0	1°
15	Tmp	27	3.949	09:39:21	09:39:24	0	+0	1°	73	Tmp	135	2.715	13:23:00	13:23:00	0	+0	1°
16	Tmp	30	5.142	09:41:40	09:42:05	0	+22	1°	74	Tmp	136	3.042	13:23:51	13:23:54	0	+0	1°
17	Tmp	35	2.078	09:54:47	09:55:09	0	+19	1°	75	Tmp	137	3.935	13:25:27	13:26:53	0	+83	1°
18	Tmp	37	3.208	09:56:33	09:56:44	0	+8	1°	76	Tmp	140	5.322	13:30:29	13:30:30	0	+0	1°
19	Tmp	42	8.878	10:03:57	10:04:00	0	+0	1°	77	Tmp	141	7.859	13:34:30	13:34:31	0	+0	1°
20	Tmp	47	2.382	10:08:42	10:08:57	0	+12	1°	78	Tmp	143	8.452	13:35:33	13:35:35	0	+0	1°
21	Tmp	49	4.920	10:11:48	10:11:49	0	+0	1°	79	Tmp	144	0.061	13:36:57	13:37:02	0	+2	1°
22	Tmp	50	8.401	10:16:06	10:16:18	0	+9	1°	80	Tmp	145	1.562	13:39:00	13:39:11	0	+8	1°
23	Tmp	52	0.201	10:18:41	10:18:47	0	+3	1°	81	Tmp	146	3.077	13:41:13	13:41:17	0	+1	1°
24	Tmp	54	2.350	10:21:59	10:22:10	0	+8	1°	82	Tmp	146	3.446	13:41:52	13:42:43	0	+48	1°
25	Tmp	58	0.230	10:27:44	10:27:51	0	+4	1°	83	Tmp	147	3.788	13:42:28	13:43:18	0	+47	1°
26	Tmp	60	1.457	10:29:36	10:29:45	0	+6	1°	84	Tmp	150	4.506	13:43:35	13:44:49	0	+71	2°
27	Tmp	60	1.887	10:30:17	10:30:21	0	+1	1°	85	Tmp	150	4.637	13:43:48	13:45:03	0	+72	2°
28	Tmp	64	3.320	10:32:54	10:33:05	0	+8	1°	86	Tmp	152	6.165	13:46:40	13:47:16	0	+33	3°
29	Tmp	66	4.183	10:34:34	10:34:40	0	+3	1°	87	Tmp	153	7.453	13:48:33	13:48:49	0	+13	3°
30	Tmp	69	5.179	10:36:27	10:36:34	0	+4	1°	88	Tmp	154	9.789	13:51:37	13:51:49	0	+9	3°
31	Tmp	72	8.898	10:41:35	10:41:49	0	+11	1°	89	Tmp	155	9.848	13:51:43	13:51:56	0	+10	3°
32	Tmp	73	0.331	10:42:59	10:43:15	0	+13	1°	90	Tmp	155	10.272	13:52:18	13:52:26	0	+5	3°
33	Tmp	74	1.352	10:45:04	10:45:10	0	+3	1°	<b>Etapa B</b> Num 131 Pen 0 PCZ 20 Total PP 547 PG 20								
34	Tmp	75	1.883	10:46:10	10:46:16	0	+3	1°	Num 131 A 1° PG 25 B 3° PG 20 Tot PG 45 Col. 1°								
35	Tmp	75	2.771	10:47:41	10:47:46	0	+2	1°									
36	Tmp	75	3.774	10:49:25	10:49:34	0	+6	1°	<b>Moto Clube / Princesa Off Road / Zaitec</b>								
37	Tmp	76	4.206	10:50:04	10:50:12	0	+5	1°									
38	Tmp	76	5.470	10:51:55	10:52:07	0	+9	1°									
39	Tmp	78	11.908	11:00:20	11:00:22	0	+0	1°									

Etapa A	Num	131	Pen	0	PCZ	9	Total PP	314	PG	25
40	Tmp	84	3.419	12:06:55	12:06:59	0	+1	12°		
41	Tmp	87	5.618	12:10:05	12:10:21	0	+13	12°		
42	Tmp	88	6.046	12:10:52	12:11:08	0	+13	8°		
43	Tmp	89	7.837	12:13:14	12:13:16	0	+0	8°		
44	Tmp	90	10.102	12:15:58	12:15:52	0	-9	8°		
45	Tmp	92	0.434	12:18:40	12:18:45	0	+2	9°		
46	Tmp	94	1.558	12:20:17	12:20:17	0	+0	9°		
47	Tmp	95	4.014	12:23:27	12:23:27	0	+0	9°		
48	Tmp	96	5.897	12:26:02	12:26:03	0	+0	9°		
49	Tmp	100	6.628	12:27:23	12:27:31	0	+5	8°		
50	Tmp	101	7.581	12:29:18	12:29:19	0	+0	8°		
51	Tmp	104	8.731	12:31:10	12:31:14	0	+1	8°		
52	Tmp	105	9.934	12:33:08	12:33:15	0	+4	8°		
53	Tmp	106	10.213	12:33:37	12:33:50	0	+10	8°		
54	Tmp	108	0.550	12:34:42	12:34:56	0	+11	7°		
55	Tmp	110	2.679	12:39:03	12:39:05	0	+0	4°		
56	Tmp	111	2.980	12:40:03	12:39:53	0	-21	5°		
57	Tmp	112	3.472	12:40:54	12:41:03	0	+6	4°		
58	Tmp	112	3.601	12:41:10	12:41:26	0	+13	4°		

<b>N u m</b>	<b>169</b>	<b>Equipe</b>	169 / Alexandre Marinho Varanda / Xandy						
		<b>Patrocinador</b>	Grupo Itadil, Eiffel						
		<b>Cat / NL / Largada</b>	JUNIOR / 41 / 08:52:00	<b>Cidade</b>	Itabuna	<b>Honda Crf-230</b>			

PC	Tp	Trc	KmPC	Ideal	Passagem	Pen	Pontos	Col	PC	Tp	Trc	KmPC	Ideal	Passagem	Pen	Pontos	Col
1	Tmp	3	0.875	09:01:17	09:01:18	0	+0	6°	59	Tmp	112	4.100	12:45:42	12:46:18	0	+33	7°
2	Tmp	5	3.706	09:05:29	09:06:06	0	+34	4°	60	Tmp	115	6.288	12:51:45	12:51:48	0	+0	7°
3	Tmp	6	4.396	09:06:48	09:07:51	0	+60	3°	61	Tmp	117	7.265	12:53:12	12:53:19	0	+4	7°
4	Tmp	9	1.332	09:12:10	09:12:14	0	+1	3°	62	Tmp	117	8.149	12:54:25	12:54:27	0	+0	7°
5	Tmp	11	2.366	09:13:46	09:13:49	0	+0	3°	63	Tmp	118	10.030	12:56:53	12:56:52	0	-0	7°
6	Tmp	12	3.599	09:17:05	09:17:10	0	+2	3°	64	Tmp	118	12.744	13:00:25	13:00:28	0	+0	7°
7	Tmp	14	4.326	09:19:00	09:19:44	0	+41	3°	65	Tmp	121	0.603	13:01:34	13:01:35	0	+0	7°
8	Tmp	16	5.226	09:21:10	09:22:17	0	+64	3°	66	Tmp	122	1.180	13:02:26	13:02:34	0	+5	7°
9	Tmp	20	7.247	09:25:43	09:26:17	0	+31	3°	67	Tmp	126	0.583	13:13:24	13:13:34	0	+7	8°
10	Tmp	20	8.875	09:28:30	09:28:50	0	+17	3°	68	Tmp	127	1.265	13:14:28	13:15:07	0	+36	8°
11	Tmp	24	1.784	09:35:37	09:35:42	0	+2	3°	69	Tmp	128	3.244	13:17:40	13:19:09	0	+86	8°
12	Tmp	25	2.622	09:38:05	09:38:56	0	+48	4°	70	Tmp	133	1.038	13:20:46	13:22:01	0	+72	7°
13	Tmp	25	3.122	09:40:05	09:41:34	0	+86	3°	71	Tmp	133	1.808	13:23:20	13:24:38	0	+75	8°
14	Tmp	26	3.479	09:41:28	09:43:03	0	+92	3°	72	Tmp	134	2.247	13:25:03	13:26:59	0	+113	9°
15	Tmp	27	3.949	09:42:51	09:44:16	0	+82	3°	73	Tmp	135	2.715	13:26:30	13:28:40	0	+127	9°
16	Tmp	30	5.142	09:45:10	09:46:44	0	+91	3°	74	Tmp	136	3.042	13:27:21	13:29:39	0	+135	9°
17	Tmp	35	2.078	09:58:17	09:58:41	0	+21	3°	75	Tmp	137	3.935	13:28:57	13:31:47	0	+167	9°
18	Tmp	37	3.208	10:00:03	10:00:22	0	+16	3°	76	Tmp	140	5.322	13:33:59	13:34:05	0	+3	9°
19	Tmp	42	8.878	10:07:27	10:07:27	0	+0	2°	77	Tmp	141	7.859	13:38:00	13:38:25	0	+22	9°
20	Tmp	47	2.382	10:12:12	10:12:30	0	+15	2°	78	Tmp	143	8.452	13:39:03	13:39:39	0	+33	9°
21	Tmp	49	4.920	10:15:18	10:15:21	0	+0	2°	79	Tmp	144	0.061	13:40:27	13:41:28	0	+58	9°
22	Tmp	50	8.401	10:19:36	10:19:44	0	+5	2°	80	Tmp	145	1.562	13:42:30	13:44:00	0	+87	9°
23	Tmp	52	0.201	10:22:11	10:22:19	0	+5	2°	81	Tmp	146	3.077	13:44:43	13:46:47	0	+121	9°
24	Tmp	54	2.350	10:25:29	10:25:40	0	+8	2°	82	Tmp	146	3.446	13:45:22	13:47:50	0	+145	9°
25	Tmp	58	0.230	10:31:14	10:31:18	0	+1	2°	83	Tmp	147	3.788	13:45:58	13:48:32	0	+151	9°
26	Tmp	60	1.457	10:33:06	10:33:12	0	+3	2°	84	Tmp	150	4.506	13:47:05	13:49:51	0	+163	9°
27	Tmp	60	1.887	10:33:47	10:33:51	0	+1	2°	85	Tmp	150	4.637	13:47:18	13:50:09	0	+168	9°
28	Tmp	64	3.320	10:36:24	10:36:32	0	+5	2°	86	Tmp	152	6.165	13:50:10	13:53:24	0	+191	9°
29	Tmp	66	4.183	10:38:04	10:38:12	0	+5	2°	87	Tmp	153	7.453	13:52:03	13:55:43	0	+217	9°
30	Tmp	69	5.179	10:39:57	10:40:02	0	+2	2°	88	Tmp	154	9.789	13:55:07	13:58:34	0	+204	9°
31	Tmp	72	8.898	10:45:05	10:45:18	0	+10	2°	89	Tmp	155	9.848	13:55:13	13:58:42	0	+206	9°
32	Tmp	73	0.331	10:46:29	10:46:42	0	+10	2°	90	Tmp	155	10.272	13:55:48	13:59:23	0	+212	9°
33	Tmp	74	1.352	10:48:34	10:48:44	0	+7	2°	<b>Etapa B</b> Num 169 Pen 0 PCZ 13 Total PP 3019 PG 12								
34	Tmp	75	1.883	10:49:40	10:49:48	0	+5	2°	Num 169 A 2° PG 22 B 9° PG 12 Tot PG 34 Col. 4°								
35	Tmp	75	2.771	10:51:11	10:51:13	0	+0	2°									
36	Tmp	75	3.774	10:52:55	10:53:06	0	+8	2°									
37	Tmp	76	4.206	10:53:34	10:53:41	0	+4	2°									
38	Tmp	76	5.470	10:55:25	10:55:35	0	+7	2°									
39	Tmp	78	11.908	11:03:50	11:03:53	0	+0	2°									

Etapa A	Num	169	Pen	0	PCZ	6	Total PP	789	PG	22
40	Tmp	84	3.419	12:10:25	12:10:29	0	+1	11°		
41	Tmp	87	5.618	12:13:35	12:13:46	0	+8	8°		
42	Tmp	88	6.046	12:14:22	12:14:43	0	+18	9°		
43	Tmp	89	7.837	12:16:44	12:16:45	0	+0	9°		
44	Tmp	90	10.102	12:19:28	12:19:26	0	-0	4°		
45	Tmp	92	0.434	12:22:10	12:22:11	0	+0	4°		
46	Tmp	94	1.558	12:23:47	12:23:47	0	+0	4°		
47	Tmp	95	4.014	12:26:57	12:26:59	0	+0	4°		
48	Tmp	96	5.897	12:29:32	12:29:35	0	+0	4°		
49	Tmp	100	6.628	12:30:53	12:30:53	0	+0	3°		
50	Tmp	101	7.581	12:32:48	12:32:46	0	-0	3°		
51	Tmp	104	8.731	12:34:40	12:34:46	0	+3	3°		
52	Tmp	105	9.934	12:36:38	12:36:44	0	+3	3°		
53	Tmp	106	10.213	12:37:07	12:37:24	0	+14	4°		
54	Tmp	108	0.550	12:38:12	12:38:38	0	+23	8°		
55	Tmp	110	2.679	12:42:33	12:43:00	0	+24	7°		
56	Tmp	111	2.980	12:43:33	12:43:59	0	+23	8°		
57	Tmp	112	3.472	12:44:24	12:44:53	0	+26	8°		
58	Tmp	112	3.601	12:44:40	12:45:18	0	+35	7°		



**Moto Clube / Princesa Off Road / Zaitec**

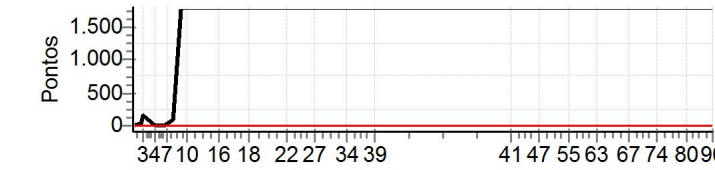
<b>N u m</b>	<b>170</b>	<b>Equipe</b>	170 / Gildasio M. Queiroz Filho / Fosco						
		<b>Patrocinador</b>	Ggs Seguros						
		<b>Cat / NL / Largada</b>	JUNIOR / 37 / 08:50:00	<b>Cidade</b>	Feira de Santana	<b>Honda Crf-230</b>			

PC	Tp	Trc	KmPC	Ideal	Passagem	Pen	Pontos	Col	PC	Tp	Trc	KmPC	Ideal	Passagem	Pen	Pontos	Col
1	Tmp	3	0.875	08:59:17	08:59:17	0	+0	10°	59	Tmp	112	4.100	12:43:42	12:43:54	0	+9	2°
2	Tmp	5	3.706	09:03:29	09:04:03	0	+31	3°	60	Tmp	115	6.288	12:49:45	12:49:46	0	+0	2°
3	Tmp	6	4.396	09:04:48	09:06:10	0	+79	4°	61	Tmp	117	7.265	12:51:12	12:51:50	0	+35	4°
4	Tmp	9	1.332	09:10:10	09:10:14	0	+1	4°	62	Tmp	117	8.149	12:52:25	12:52:50	0	+22	4°
5	Tmp	11	2.366	09:11:46	09:11:48	0	+0	4°	63	Tmp	118	10.030	12:54:53	12:54:50	0	-0	4°
6	Tmp	12	3.599	09:15:05	09:15:09	0	+1	4°	64	Tmp	118	12.744	12:58:25	12:58:26	0	+0	4°
7	Tmp	14	4.326	09:17:00	09:18:32	0	+89	5°	65	Tmp	121	0.603	12:59:34	12:59:35	0	+0	4°
8	Tmp	16	5.226	09:19:10	09:21:40	0	+147	11°	66	Tmp	122	1.180	13:00:26	13:00:27	0	+0	4°
9	Tmp	20	7.247	09:23:43	09:26:08	0	+142	11°	67	Tmp	126	0.583	13:11:24	13:11:34	0	+7	4°
10	Tmp	20	8.875	09:26:30	09:28:49	0	+136	12°	68	Tmp	127	1.265	13:12:28	13:12:53	0	+22	4°
11	Tmp	24	1.784	09:33:37	09:33:41	0	+1	12°	69	Tmp	128	3.244	13:15:40	13:15:44	0	+1	4°
12	Tmp	25	2.622	09:36:05	09:36:49	0	+41	12°	70	Tmp	133	1.038	13:18:46	13:18:51	0	+2	2°
13	Tmp	25	3.122	09:38:05	09:40:51	0	+163	12°	71	Tmp	133	1.808	13:21:20	13:21:26	0	+3	2°
14	Tmp	26	3.479	09:39:28	09:43:14	0	+223	12°	72	Tmp	134	2.247	13:23:03	13:23:30	0	+24	2°
15	Tmp	27	3.949	09:40:51	09:44:37	0	+223	13°	73	Tmp	135	2.715	13:24:30	13:25:01	0	+28	2°
16	Tmp	30	5.142	09:43:10	09:47:48	0	+275	13°	74	Tmp	136	3.042	13:25:21	13:25:47	0	+23	2°
17	Tmp	35	2.078	09:56:17	09:57:03	0	+43	13°	75	Tmp	137	3.935	13:26:57	13:27:32	0	+32	2°
18	Tmp	37	3.208	09:58:03	09:58:37	0	+31	13°	76	Tmp	140	5.322	13:31:59	13:32:00	0	+0	2°
19	Tmp	42	8.878	10:05:27	10:05:53	0	+23	13°	77	Tmp	141	7.859	13:36:00	13:36:04	0	+1	2°
20	Tmp	47	2.382	10:10:12	10:10:27	0	+12	12°	78	Tmp	143	8.452	13:37:03	13:37:04	0	+0	2°
21	Tmp	49	4.920	10:13:18	10:13:20	0	+0	11°	79	Tmp	144	0.061	13:38:27	13:38:33	0	+3	2°
22	Tmp	50	8.401	10:17:36	10:17:48	0	+9	10°	80	Tmp	145	1.562	13:40:30	13:40:44	0	+11	2°
23	Tmp	52	0.201	10:20:11	10:20:23	0	+9	10°	81	Tmp	146	3.077	13:42:43	13:42:52	0	+6	2°
24	Tmp	54	2.350	10:23:29	10:23:37	0	+5	10°	82	Tmp	146	3.446	13:43:22	13:43:52	0	+27	2°
25	Tmp	58	0.230	10:29:14	10:29:14	0	+0	10°	83	Tmp	147	3.788	13:43:58	13:44:27	0	+26	2°
26	Tmp	60	1.457	10:31:06	10:31:12	0	+3	10°	84	Tmp	150	4.506	13:45:05	13:45:29	0	+21	1°
27	Tmp	60	1.887	10:31:47	10:31:49	0	+0	10°	85	Tmp	150	4.637	13:45:18	13:45:45	0	+24	1°
28	Tmp	64	3.320	10:34:24	10:34:29	0	+2	9°	86	Tmp	152	6.165	13:48:10	13:48:16	0	+3	1°
29	Tmp	66	4.183	10:36:04	10:36:13	0	+6	9°	87	Tmp	153	7.453	13:50:03	13:50:05	0	+0	1°
30	Tmp	69	5.179	10:37:57	10:37:57	0	+0	9°	88	Tmp	154	9.789	13:53:07	13:53:12	0	+2	1°
31	Tmp	72	8.898	10:43:05	10:43:10	0	+2	9°	89	Tmp	155	9.848	13:53:13	13:53:19	0	+3	1°
32	Tmp	73	0.331	10:44:29	10:44:47	0	+15	8°	90	Tmp	155	10.272	13:53:48	13:53:47	0	-0	1°
33	Tmp	74	1.352	10:46:34	10:46:56	0	+19	8°	<b>Etapa B</b> Num 170 Pen 0 PCZ 19 Total PP 415 PG 25								
34	Tmp	75	1.883	10:47:40	10:48:04	0	+21	8°	Num 170 A 7° PG 14 B 1° PG 25 Tot PG 39 Col. 2°								
35	Tmp	75	2.771	10:49:11	10:49:30	0	+16	8°									
36	Tmp	75	3.774	10:50:55	10:51:03	0	+5	7°	<b>Etapa A</b> Num 170 Pen 0 PCZ 6 Total PP 1782 PG 14								
37	Tmp	76	4.206	10:51:34	10:51:39	0	+2	7°	40	Tmp	84	3.419	12:08:25	12:08:27	0	+0	10°
38	Tmp	76	5.470	10:53:25	10:53:32	0	+4	7°	41	Tmp	87	5.618	12:11:35	12:11:46	0	+8	5°
39	Tmp	78	11.908	11:01:50	11:01:56	0	+3	7°	42	Tmp	88	6.046	12:12:22	12:12:35	0	+10	4°
									43	Tmp	89	7.837	12:14:44	12:14:45	0	+0	4°
									44	Tmp	90	10.102	12:17:28	12:17:22	0	-9	5°
									45	Tmp	92	0.434	12:20:10	12:20:07	0	-0	5°
									46	Tmp	94	1.558	12:21:47	12:21:51	0	+1	5°
									47	Tmp	95	4.014	12:24:57	12:24:56	0	-0	5°
									48	Tmp	96	5.897	12:27:32	12:27:30	0	-0	5°
									49	Tmp	100	6.628	12:28:53	12:28:55	0	+0	4°
									50	Tmp	101	7.581	12:30:48	12:30:43	0	-6	4°
									51	Tmp	104	8.731	12:32:40	12:32:42	0	+0	4°
									52	Tmp	105	9.934	12:34:38	12:34:41	0	+0	4°
									53	Tmp	106	10.213	12:35:07	12:35:24	0	+14	5°
									54	Tmp	108	0.550	12:36:12	12:36:34	0	+19	5°
									55	Tmp	110	2.679	12:40:33	12:40:39	0	+3	5°
									56	Tmp	111	2.980	12:41:33	12:41:36	0	+0	2°
									57	Tmp	112	3.472	12:42:24	12:42:26	0	+0	2°
									58	Tmp	112	3.601	12:42:40	12:42:53	0	+10	2°

**Moto Clube / Princesa Off Road / Zaitec**

<b>N u m</b>	<b>199</b>	<b>Equipe</b>	199 / Jose Marcos Ribeiro Costa / Pitinho						
		<b>Patrocinador</b>	Realeza Motos Concessionária Honda						
		<b>Cat / NL / Largada</b>	JUNIOR / 35 / 08:49:00	<b>Cidade</b>	Itapetinga	Yamaha Wr-250			

PC	Tp	Trc	KmPC	Ideal	Passagem	Pen	Pontos	Col	PC	Tp	Trc	KmPC	Ideal	Passagem	Pen	Pontos	Col
1	Tmp	3	0.875	08:58:17	08:58:17	0	+0	16°	59	Tmp	112	4.100	12:42:42		0	+1800	16°
2	Tmp	5	3.706	09:02:29	09:03:16	0	+44	15°	60	Tmp	115	6.288	12:48:45		0	+1800	16°
3	Tmp	6	4.396	09:03:48	09:06:10	0	+139	15°	61	Tmp	117	7.265	12:50:12		0	+1800	16°
4	Tmp	9	1.332	09:09:10	09:09:13	0	+0	15°	62	Tmp	117	8.149	12:51:25		0	+1800	16°
5	Tmp	11	2.366	09:10:46	09:10:48	0	+0	15°	63	Tmp	118	10.030	12:53:53		0	+1800	16°
6	Tmp	12	3.599	09:14:05	09:14:15	0	+7	15°	64	Tmp	118	12.744	12:57:25		0	+1800	16°
7	Tmp	14	4.326	09:16:00	09:16:38	0	+35	15°	65	Tmp	121	0.603	12:58:34		0	+1800	16°
8	Tmp	16	5.226	09:18:10	09:19:33	0	+80	16°	66	Tmp	122	1.180	12:59:26		0	+1800	16°
9	Tmp	20	7.247	09:22:43		0	+1800	16°	67	Tmp	126	0.583	13:10:24		0	+1800	16°
10	Tmp	20	8.875	09:25:30		0	+1800	16°	68	Tmp	127	1.265	13:11:28		0	+1800	16°
11	Tmp	24	1.784	09:32:37		0	+1800	16°	69	Tmp	128	3.244	13:14:40		0	+1800	16°
12	Tmp	25	2.622	09:35:05		0	+1800	16°	70	Tmp	133	1.038	13:17:46		0	+1800	16°
13	Tmp	25	3.122	09:37:05		0	+1800	16°	71	Tmp	133	1.808	13:20:20		0	+1800	16°
14	Tmp	26	3.479	09:38:28		0	+1800	16°	72	Tmp	134	2.247	13:22:03		0	+1800	16°
15	Tmp	27	3.949	09:39:51		0	+1800	16°	73	Tmp	135	2.715	13:23:30		0	+1800	16°
16	Tmp	30	5.142	09:42:10		0	+1800	16°	74	Tmp	136	3.042	13:24:21		0	+1800	16°
17	Tmp	35	2.078	09:55:17		0	+1800	16°	75	Tmp	137	3.935	13:25:57		0	+1800	16°
18	Tmp	37	3.208	09:57:03		0	+1800	16°	76	Tmp	140	5.322	13:30:59		0	+1800	16°
19	Tmp	42	8.878	10:04:27		0	+1800	16°	77	Tmp	141	7.859	13:35:00		0	+1800	16°
20	Tmp	47	2.382	10:09:12		0	+1800	16°	78	Tmp	143	8.452	13:36:03		0	+1800	16°
21	Tmp	49	4.920	10:12:18		0	+1800	16°	79	Tmp	144	0.061	13:37:27		0	+1800	16°
22	Tmp	50	8.401	10:16:36		0	+1800	16°	80	Tmp	145	1.562	13:39:30		0	+1800	16°
23	Tmp	52	0.201	10:19:11		0	+1800	16°	81	Tmp	146	3.077	13:41:43		0	+1800	16°
24	Tmp	54	2.350	10:22:29		0	+1800	16°	82	Tmp	146	3.446	13:42:22		0	+1800	16°
25	Tmp	58	0.230	10:28:14		0	+1800	16°	83	Tmp	147	3.788	13:42:58		0	+1800	16°
26	Tmp	60	1.457	10:30:06		0	+1800	16°	84	Tmp	150	4.506	13:44:05		0	+1800	16°
27	Tmp	60	1.887	10:30:47		0	+1800	16°	85	Tmp	150	4.637	13:44:18		0	+1800	16°
28	Tmp	64	3.320	10:33:24		0	+1800	16°	86	Tmp	152	6.165	13:47:10		0	+1800	16°
29	Tmp	66	4.183	10:35:04		0	+1800	16°	87	Tmp	153	7.453	13:49:03		0	+1800	16°
30	Tmp	69	5.179	10:36:57		0	+1800	16°	88	Tmp	154	9.789	13:52:07		0	+1800	16°
31	Tmp	72	8.898	10:42:05		0	+1800	16°	89	Tmp	155	9.848	13:52:13		0	+1800	16°
32	Tmp	73	0.331	10:43:29		0	+1800	16°	90	Tmp	155	10.272	13:52:48		0	+1800	16°
33	Tmp	74	1.352	10:45:34		0	+1800	16°	<b>Etapa B</b> Num 199 Pen 0 PCZ 0 Total PP 91800 PG 0								
34	Tmp	75	1.883	10:46:40		0	+1800	16°	Num 199 A NC PG 0 B NC PG 0 Tot PG 0 Col. 16°								
35	Tmp	75	2.771	10:48:11		0	+1800	16°									
36	Tmp	75	3.774	10:49:55		0	+1800	16°									
37	Tmp	76	4.206	10:50:34		0	+1800	16°									
38	Tmp	76	5.470	10:52:25		0	+1800	16°									
39	Tmp	78	11.908	11:00:50	12:53:55	0	+1800	16°									
<b>Etapa A</b> Num 199 Pen 0 PCZ 3 Total PP 56105 PG 0																	
40	Tmp	84	3.419	12:07:25		0	+1800	16°									
41	Tmp	87	5.618	12:10:35		0	+1800	16°									
42	Tmp	88	6.046	12:11:22		0	+1800	16°									
43	Tmp	89	7.837	12:13:44		0	+1800	16°									
44	Tmp	90	10.102	12:16:28		0	+1800	16°									
45	Tmp	92	0.434	12:19:10		0	+1800	16°									
46	Tmp	94	1.558	12:20:47		0	+1800	16°									
47	Tmp	95	4.014	12:23:57		0	+1800	16°									
48	Tmp	96	5.897	12:26:32		0	+1800	16°									
49	Tmp	100	6.628	12:27:53		0	+1800	16°									
50	Tmp	101	7.581	12:29:48		0	+1800	16°									
51	Tmp	104	8.731	12:31:40		0	+1800	16°									
52	Tmp	105	9.934	12:33:38		0	+1800	16°									
53	Tmp	106	10.213	12:34:07		0	+1800	16°									
54	Tmp	108	0.550	12:35:12		0	+1800	16°									
55	Tmp	110	2.679	12:39:33		0	+1800	16°									
56	Tmp	111	2.980	12:40:33		0	+1800	16°									
57	Tmp	112	3.472	12:41:24		0	+1800	16°									
58	Tmp	112	3.601	12:41:40		0	+1800	16°									



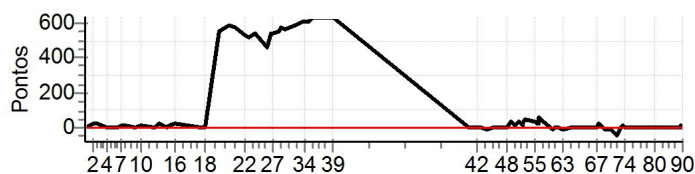
**Moto Clube / Princesa Off Road / Zaitec**



<b>N u m</b>	<b>216</b>	<b>Equipe</b>	216 / Igor Edric Vilas Boas Pereira / Igora						
		<b>Patrocinador</b>	Pj Locações						
		<b>Cat / NL / Largada</b>	JUNIOR / 45 / 08:54:00	<b>Cidade</b>	Jacobina	<b>Honda Crf-230</b>			

PC	Tp	Trc	KmPC	Ideal	Passagem	Pen	Pontos	Col	PC	Tp	Trc	KmPC	Ideal	Passagem	Pen	Pontos	Col
1	Tmp	3	0.875	09:03:17	09:03:18	0	+0	3°	59	Tmp	112	4.100	12:47:42	12:48:32	0	+47	9°
2	Tmp	5	3.706	09:07:29	09:07:56	0	+24	2°	60	Tmp	115	6.288	12:53:45	12:53:41	0	-3	9°
3	Tmp	6	4.396	09:08:48	09:09:19	0	+28	1°	61	Tmp	117	7.265	12:55:12	12:55:16	0	+1	9°
4	Tmp	9	1.332	09:14:10	09:14:12	0	+0	1°	62	Tmp	117	8.149	12:56:25	12:56:25	0	+0	9°
5	Tmp	11	2.366	09:15:46	09:15:50	0	+1	1°	63	Tmp	118	10.030	12:58:53	12:58:49	0	-3	9°
6	Tmp	12	3.599	09:19:05	09:19:13	0	+5	1°	64	Tmp	118	12.744	13:02:25	13:02:24	0	-0	9°
7	Tmp	14	4.326	09:21:00	09:21:18	0	+15	1°	65	Tmp	121	0.603	13:03:34	13:03:37	0	+0	9°
8	Tmp	16	5.226	09:23:10	09:23:32	0	+19	1°	66	Tmp	122	1.180	13:04:26	13:04:34	0	+5	10°
9	Tmp	20	7.247	09:27:43	09:27:48	0	+2	1°	67	Tmp	126	0.583	13:15:24	13:15:29	0	+2	10°
10	Tmp	20	8.875	09:30:30	09:30:43	0	+10	1°	68	Tmp	127	1.265	13:16:28	13:16:57	0	+26	10°
11	Tmp	24	1.784	09:37:37	09:37:49	0	+9	1°	69	Tmp	128	3.244	13:19:40	13:19:33	0	-12	10°
12	Tmp	25	2.622	09:40:05	09:40:29	0	+21	2°	70	Tmp	133	1.038	13:22:46	13:22:40	0	-9	9°
13	Tmp	25	3.122	09:42:05	09:42:28	0	+20	2°	71	Tmp	133	1.808	13:25:20	13:25:03	0	-42	9°
14	Tmp	26	3.479	09:43:28	09:43:36	0	+5	2°	72	Tmp	134	2.247	13:27:03	13:27:07	0	+1	8°
15	Tmp	27	3.949	09:44:51	09:45:05	0	+11	2°	73	Tmp	135	2.715	13:28:30	13:28:43	0	+10	7°
16	Tmp	30	5.142	09:47:10	09:47:41	0	+28	2°	74	Tmp	136	3.042	13:29:21	13:29:26	0	+2	7°
17	Tmp	35	2.078	10:00:17	10:00:26	0	+6	2°	75	Tmp	137	3.935	13:30:57	13:31:05	0	+5	7°
18	Tmp	37	3.208	10:02:03	10:02:08	0	+2	2°	76	Tmp	140	5.322	13:35:59	13:36:01	0	+0	7°
19	Tmp	42	8.878	10:09:27	10:18:44	0	+554	3°	77	Tmp	141	7.859	13:40:00	13:39:59	0	-0	7°
20	Tmp	47	2.382	10:14:12	10:23:58	0	+583	7°	78	Tmp	143	8.452	13:41:03	13:41:00	0	-0	7°
21	Tmp	49	4.920	10:17:18	10:26:57	0	+576	12°	79	Tmp	144	0.061	13:42:27	13:42:32	0	+2	7°
22	Tmp	50	8.401	10:21:36	10:30:25	0	+526	13°	80	Tmp	145	1.562	13:44:30	13:44:36	0	+3	7°
23	Tmp	52	0.201	10:24:11	10:32:53	0	+519	13°	81	Tmp	146	3.077	13:46:43	13:46:41	0	-0	6°
24	Tmp	54	2.350	10:27:29	10:36:27	0	+535	13°	82	Tmp	146	3.446	13:47:22	13:47:33	0	+8	6°
25	Tmp	58	0.230	10:33:14	10:41:00	0	+463	13°	83	Tmp	147	3.788	13:47:58	13:48:06	0	+5	6°
26	Tmp	60	1.457	10:35:06	10:44:04	0	+535	13°	84	Tmp	150	4.506	13:49:05	13:49:11	0	+3	6°
27	Tmp	60	1.887	10:35:47	10:44:43	0	+533	13°	85	Tmp	150	4.637	13:49:18	13:49:27	0	+6	5°
28	Tmp	64	3.320	10:38:24	10:47:39	0	+552	13°	86	Tmp	152	6.165	13:52:10	13:52:09	0	-0	4°
29	Tmp	66	4.183	10:40:04	10:49:37	0	+570	13°	87	Tmp	153	7.453	13:54:03	13:54:02	0	-0	4°
30	Tmp	69	5.179	10:41:57	10:51:24	0	+564	13°	88	Tmp	154	9.789	13:57:07	13:57:17	0	+7	4°
31	Tmp	72	8.898	10:47:05	10:56:51	0	+583	13°	89	Tmp	155	9.848	13:57:13	13:57:26	0	+10	4°
32	Tmp	73	0.331	10:48:29	10:58:29	0	+597	13°	90	Tmp	155	10.272	13:57:48	13:58:00	0	+9	5°
33	Tmp	74	1.352	10:50:34	11:00:38	0	+601	13°	<b>Etapa B</b> Num 216 Pen 0 PCZ 15 Total PP 567 PG 16								
34	Tmp	75	1.883	10:51:40	11:01:47	0	+604	13°	Num 216 A 13° PG 8 B 5° PG 16 Tot PG 24 Col. 10°								
35	Tmp	75	2.771	10:53:11	11:03:22	0	+608	13°									
36	Tmp	75	3.774	10:54:55	11:05:20	0	+622	13°									
37	Tmp	76	4.206	10:55:34	11:06:02	0	+625	13°									
38	Tmp	76	5.470	10:57:25	11:07:57	0	+629	13°									
39	Tmp	78	11.908	11:05:50	11:16:22	0	+629	13°									

<b>Etapa A</b>		Num	216	Pen	0	PCZ	2	Total PP	12214	PG	8
40	Tmp	84	3.419	12:12:25	12:12:24	0	-0	5°			
41	Tmp	87	5.618	12:15:35	12:15:40	0	+2	1°			
42	Tmp	88	6.046	12:16:22	12:16:24	0	+0	1°			
43	Tmp	89	7.837	12:18:44	12:18:43	0	-0	1°			
44	Tmp	90	10.102	12:21:28	12:21:23	0	-6	1°			
45	Tmp	92	0.434	12:24:10	12:24:15	0	+2	1°			
46	Tmp	94	1.558	12:25:47	12:25:46	0	-0	1°			
47	Tmp	95	4.014	12:28:57	12:28:54	0	-0	1°			
48	Tmp	96	5.897	12:31:32	12:31:33	0	+0	1°			
49	Tmp	100	6.628	12:32:53	12:33:38	0	+42	11°			
50	Tmp	101	7.581	12:34:48	12:35:08	0	+17	11°			
51	Tmp	104	8.731	12:36:40	12:37:19	0	+36	13°			
52	Tmp	105	9.934	12:38:38	12:39:01	0	+20	13°			
53	Tmp	106	10.213	12:39:07	12:39:37	0	+27	12°			
54	Tmp	108	0.550	12:40:12	12:41:02	0	+47	12°			
55	Tmp	110	2.679	12:44:33	12:45:09	0	+33	12°			
56	Tmp	111	2.980	12:45:33	12:46:04	0	+28	12°			
57	Tmp	112	3.472	12:46:24	12:46:57	0	+30	11°			
58	Tmp	112	3.601	12:46:40	12:47:39	0	+56	10°			

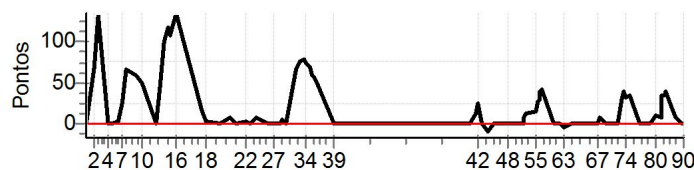


**Moto Clube / Princesa Off Road / Zaitec**

<b>N u m</b>	<b>230</b>	<b>Equipe</b>	230 / Jose Eduardo R M Sena / Plastico						
		<b>Patrocinador</b>	Prefeitura de Paulo Afonso, Je Embalagens						
		<b>Cat / NL / Largada</b>	JUNIOR / 44 / 08:53:30	<b>Cidade</b>	Paulo Afonso	Honda Crf-250			

PC	Tp	Trc	KmPC	Ideal	Passagem	Pen	Pontos	Col	PC	Tp	Trc	KmPC	Ideal	Passagem	Pen	Pontos	Col
1	Tmp	3	0.875	09:02:47	09:02:47	0	+0	4°	59	Tmp	112	4.100	12:47:12	12:47:58	0	+43	8°
2	Tmp	5	3.706	09:06:59	09:08:12	0	+70	10°	60	Tmp	115	6.288	12:53:15	12:53:15	0	+0	8°
3	Tmp	6	4.396	09:08:18	09:10:34	0	+133	10°	61	Tmp	117	7.265	12:54:42	12:54:44	0	+0	8°
4	Tmp	9	1.332	09:13:40	09:13:42	0	+0	10°	62	Tmp	117	8.149	12:55:55	12:55:54	0	-0	8°
5	Tmp	11	2.366	09:15:16	09:15:18	0	+0	10°	63	Tmp	118	10.030	12:58:23	12:58:19	0	-3	8°
6	Tmp	12	3.599	09:18:35	09:18:40	0	+2	10°	64	Tmp	118	12.744	13:01:55	13:01:55	0	+0	8°
7	Tmp	14	4.326	09:20:30	09:20:58	0	+25	10°	65	Tmp	121	0.603	13:03:04	13:03:05	0	+0	8°
8	Tmp	16	5.226	09:22:40	09:23:49	0	+66	8°	66	Tmp	122	1.180	13:03:56	13:03:55	0	-0	8°
9	Tmp	20	7.247	09:27:13	09:28:15	0	+59	8°	67	Tmp	126	0.583	13:14:54	13:14:55	0	+0	7°
10	Tmp	20	8.875	09:30:00	09:30:52	0	+49	7°	68	Tmp	127	1.265	13:15:58	13:16:09	0	+8	7°
11	Tmp	24	1.784	09:37:07	09:37:09	0	+0	7°	69	Tmp	128	3.244	13:19:10	13:19:08	0	-0	7°
12	Tmp	25	2.622	09:39:35	09:40:26	0	+48	8°	70	Tmp	133	1.038	13:22:16	13:22:17	0	+0	6°
13	Tmp	25	3.122	09:41:35	09:43:20	0	+102	8°	71	Tmp	133	1.808	13:24:50	13:24:47	0	-0	6°
14	Tmp	26	3.479	09:42:58	09:44:58	0	+117	8°	72	Tmp	134	2.247	13:26:33	13:27:06	0	+30	6°
15	Tmp	27	3.949	09:44:21	09:46:13	0	+109	8°	73	Tmp	135	2.715	13:28:00	13:28:42	0	+39	6°
16	Tmp	30	5.142	09:46:40	09:48:58	0	+135	7°	74	Tmp	136	3.042	13:28:51	13:29:26	0	+32	5°
17	Tmp	35	2.078	09:59:47	10:00:06	0	+16	6°	75	Tmp	137	3.935	13:30:27	13:31:04	0	+34	5°
18	Tmp	37	3.208	10:01:33	10:01:40	0	+4	5°	76	Tmp	140	5.322	13:35:29	13:35:30	0	+0	5°
19	Tmp	42	8.878	10:08:57	10:08:58	0	+0	5°	77	Tmp	141	7.859	13:39:30	13:39:33	0	+0	5°
20	Tmp	47	2.382	10:13:42	10:13:53	0	+8	4°	78	Tmp	143	8.452	13:40:33	13:40:35	0	+0	5°
21	Tmp	49	4.920	10:16:48	10:16:47	0	-0	4°	79	Tmp	144	0.061	13:41:57	13:42:03	0	+3	5°
22	Tmp	50	8.401	10:21:06	10:21:13	0	+4	4°	80	Tmp	145	1.562	13:44:00	13:44:13	0	+10	5°
23	Tmp	52	0.201	10:23:41	10:23:45	0	+1	4°	81	Tmp	146	3.077	13:46:13	13:46:23	0	+7	5°
24	Tmp	54	2.350	10:26:59	10:27:10	0	+8	4°	82	Tmp	146	3.446	13:46:52	13:47:29	0	+34	4°
25	Tmp	58	0.230	10:32:44	10:32:46	0	+0	4°	83	Tmp	147	3.788	13:47:28	13:48:06	0	+35	4°
26	Tmp	60	1.457	10:34:36	10:34:40	0	+1	4°	84	Tmp	150	4.506	13:48:35	13:49:16	0	+38	4°
27	Tmp	60	1.887	10:35:17	10:35:17	0	+0	4°	85	Tmp	150	4.637	13:48:48	13:49:30	0	+39	4°
28	Tmp	64	3.320	10:37:54	10:37:58	0	+1	4°	86	Tmp	152	6.165	13:51:40	13:52:04	0	+21	5°
29	Tmp	66	4.183	10:39:34	10:39:43	0	+6	4°	87	Tmp	153	7.453	13:53:33	13:53:45	0	+9	5°
30	Tmp	69	5.179	10:41:27	10:41:30	0	+0	4°	88	Tmp	154	9.789	13:56:37	13:56:40	0	+0	5°
31	Tmp	72	8.898	10:46:35	10:47:45	0	+67	4°	89	Tmp	155	9.848	13:56:43	13:56:46	0	+0	5°
32	Tmp	73	0.331	10:47:59	10:49:19	0	+77	4°	90	Tmp	155	10.272	13:57:18	13:57:19	0	+0	4°
33	Tmp	74	1.352	10:50:04	10:51:25	0	+78	5°	<b>Etapa B</b> Num 230 Pen 0 PCZ 25 Total PP 564 PG 18								
34	Tmp	75	1.883	10:51:10	10:52:28	0	+75	5°	Num 230 A 6° PG 15 B 4° PG 18 Tot PG 33 Col. 5°								
35	Tmp	75	2.771	10:52:41	10:53:52	0	+68	5°									
36	Tmp	75	3.774	10:54:25	10:55:28	0	+60	5°									
37	Tmp	76	4.206	10:55:04	10:56:04	0	+57	5°									
38	Tmp	76	5.470	10:56:55	10:57:44	0	+46	6°									
39	Tmp	78	11.908	11:05:20	11:05:19	0	-0	6°									

Etapa A	Num	230	Pen	0	PCZ	10	Total PP	1492	PG	15
40	Tmp	84	3.419	12:11:55	12:11:55	0	+0	6°		
41	Tmp	87	5.618	12:15:05	12:15:21	0	+13	11°		
42	Tmp	88	6.046	12:15:52	12:16:19	0	+24	12°		
43	Tmp	89	7.837	12:18:14	12:18:14	0	+0	12°		
44	Tmp	90	10.102	12:20:58	12:20:52	0	-9	11°		
45	Tmp	92	0.434	12:23:40	12:23:39	0	-0	11°		
46	Tmp	94	1.558	12:25:17	12:25:18	0	+0	11°		
47	Tmp	95	4.014	12:28:27	12:28:24	0	-0	11°		
48	Tmp	96	5.897	12:31:02	12:31:01	0	-0	11°		
49	Tmp	100	6.628	12:32:23	12:32:25	0	+0	9°		
50	Tmp	101	7.581	12:34:18	12:34:17	0	-0	9°		
51	Tmp	104	8.731	12:36:10	12:36:12	0	+0	9°		
52	Tmp	105	9.934	12:38:08	12:38:12	0	+1	7°		
53	Tmp	106	10.213	12:38:37	12:38:49	0	+9	7°		
54	Tmp	108	0.550	12:39:42	12:39:57	0	+12	6°		
55	Tmp	110	2.679	12:44:03	12:44:22	0	+16	6°		
56	Tmp	111	2.980	12:45:03	12:45:33	0	+27	6°		
57	Tmp	112	3.472	12:45:54	12:46:26	0	+29	7°		
58	Tmp	112	3.601	12:46:10	12:46:52	0	+39	8°		



**Moto Clube / Princesa Off Road / Zaitec**

<b>N u m</b>	<b>262</b>	<b>Equipe</b>	262 / Handerson Oliveira Fontes / Tiquinho						
		<b>Patrocinador</b>	Fontes Leão E Representações						
		<b>Cat / NL / Largada</b>	JUNIOR / 50 / 08:56:30	<b>Cidade</b>	Feira de Santana	<b>Lander</b>			

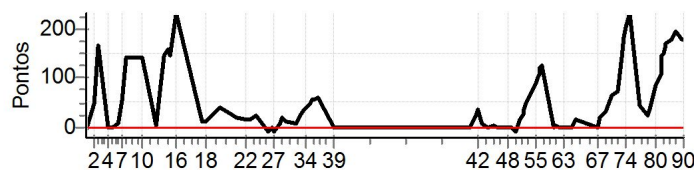
PC	Tp	Trc	KmPC	Ideal	Passagem	Pen	Pontos	Col	PC	Tp	Trc	KmPC	Ideal	Passagem	Pen	Pontos	Col						
1	Tmp	3	0.875	09:05:47	09:04:27	0	-231	14°	59	Tmp	112	4.100	12:50:12	12:54:38	0	+263	14°						
2	Tmp	5	3.706	09:09:59	09:14:06	0	+244	14°	60	Tmp	115	6.288	12:56:15	12:59:48	0	+210	14°						
3	Tmp	6	4.396	09:11:18	09:18:57	0	+456	14°	61	Tmp	117	7.265	12:57:42	13:10:41	0	+776	14°						
4	Tmp	9	1.332	09:16:40	09:21:47	0	+304	14°	62	Tmp	117	8.149	12:58:55	13:12:04	0	+786	14°						
5	Tmp	11	2.366	09:18:16	09:23:46	0	+327	14°	63	Tmp	118	10.030	13:01:23	13:15:51	0	+865	14°						
6	Tmp	12	3.599	09:21:35	09:29:04	0	+446	14°	64	Tmp	118	12.744	13:04:55	13:19:40	0	+882	14°						
7	Tmp	14	4.326	09:23:30	09:32:46	0	+553	14°	65	Tmp	121	0.603	13:06:04	13:23:00	0	+900	14°						
8	Tmp	16	5.226	09:25:40	09:37:00	0	+677	14°	66	Tmp	122	1.180	13:06:56	13:24:23	0	+900	14°						
9	Tmp	20	7.247	09:30:13	09:42:26	0	+730	14°	67	Tmp	126	0.583	13:17:54	13:32:20	0	+863	14°						
10	Tmp	20	8.875	09:33:00	09:45:34	0	+751	14°	68	Tmp	127	1.265	13:18:58	13:34:27	0	+900	14°						
11	Tmp	24	1.784	09:40:07	09:50:08	0	+598	14°	69	Tmp	128	3.244	13:22:10	13:38:02	0	+900	14°						
12	Tmp	25	2.622	09:42:35	09:55:20	0	+762	14°	70	Tmp	133	1.038	13:25:16	13:41:29	0	+900	14°						
13	Tmp	25	3.122	09:44:35	10:05:38	0	+900	14°	71	Tmp	133	1.808	13:27:50	13:46:06	0	+900	14°						
14	Tmp	26	3.479	09:45:58	10:09:18	0	+900	14°	72	Tmp	134	2.247	13:29:33	13:50:48	0	+900	14°						
15	Tmp	27	3.949	09:47:21	10:11:32	0	+900	14°	73	Tmp	135	2.715	13:31:00	13:52:49	0	+900	14°						
16	Tmp	30	5.142	09:49:40		0	+1800	14°	74	Tmp	136	3.042	13:31:51	13:54:01	0	+900	14°						
17	Tmp	35	2.078	10:02:47		0	+1800	14°	75	Tmp	137	3.935	13:33:27	13:56:20	0	+900	14°						
18	Tmp	37	3.208	10:04:33		0	+1800	14°	76	Tmp	140	5.322	13:38:29	13:58:09	0	+900	14°						
19	Tmp	42	8.878	10:11:57		0	+1800	14°	77	Tmp	141	7.859	13:42:30	14:01:47	0	+900	14°						
20	Tmp	47	2.382	10:16:42	10:32:16	0	+900	14°	78	Tmp	143	8.452	13:43:33	14:03:04	0	+900	13°						
21	Tmp	49	4.920	10:19:48	10:35:20	0	+900	14°	79	Tmp	144	0.061	13:44:57	14:23:19	0	+1800	13°						
22	Tmp	50	8.401	10:24:06		0	+1800	14°	80	Tmp	145	1.562	13:47:00		0	+1800	13°						
23	Tmp	52	0.201	10:26:41		0	+1800	14°	81	Tmp	146	3.077	13:49:13		0	+1800	13°						
24	Tmp	54	2.350	10:29:59		0	+1800	14°	82	Tmp	146	3.446	13:49:52		0	+1800	13°						
25	Tmp	58	0.230	10:35:44	10:44:00	0	+493	14°	83	Tmp	147	3.788	13:50:28		0	+1800	13°						
26	Tmp	60	1.457	10:37:36	10:47:09	0	+570	14°	84	Tmp	150	4.506	13:51:35		0	+1800	13°						
27	Tmp	60	1.887	10:38:17	10:47:49	0	+569	14°	85	Tmp	150	4.637	13:51:48		0	+1800	13°						
28	Tmp	64	3.320	10:40:54	10:52:41	0	+704	14°	86	Tmp	152	6.165	13:54:40		0	+1800	13°						
29	Tmp	66	4.183	10:42:34	10:55:12	0	+755	14°	87	Tmp	153	7.453	13:56:33		0	+1800	13°						
30	Tmp	69	5.179	10:44:27	10:58:21	0	+831	14°	88	Tmp	154	9.789	13:59:37		0	+1800	13°						
31	Tmp	72	8.898	10:49:35	11:03:36	0	+838	14°	89	Tmp	155	9.848	13:59:43		0	+1800	13°						
32	Tmp	73	0.331	10:50:59	11:05:20	0	+858	14°	90	Tmp	155	10.272	14:00:18		0	+1800	13°						
33	Tmp	74	1.352	10:53:04	11:08:06	0	+899	14°	<b>Etapa B</b>									<b>Num</b> 262	<b>Pen</b> 0	<b>PCZ</b> 0	<b>Total PP</b> 43556	<b>PG</b> 8	
34	Tmp	75	1.883	10:54:10	11:09:38	0	+900	14°	<b>Num</b> 262									<b>A</b> 14°	<b>PG</b> 7	<b>B</b> 13°	<b>PG</b> 8	<b>Tot PG</b> 15	<b>Col.</b> 14°
35	Tmp	75	2.771	10:55:41	11:11:48	0	+900	14°															
36	Tmp	75	3.774	10:57:25	11:14:17	0	+900	14°	<b>Etapa A</b>									<b>Num</b> 262	<b>Pen</b> 0	<b>PCZ</b> 0	<b>Total PP</b> 35096	<b>PG</b> 7	
37	Tmp	76	4.206	10:58:04	11:15:26	0	+900	14°	40	Tmp	84	3.419	12:14:55	12:11:40	0	-576	14°						
38	Tmp	76	5.470	10:59:55	11:17:42	0	+900	14°	41	Tmp	87	5.618	12:18:05	12:15:29	0	-459	14°						
39	Tmp	78	11.908	11:08:20	11:24:56	0	+900	14°	42	Tmp	88	6.046	12:18:52	12:16:45	0	-372	14°						
									43	Tmp	89	7.837	12:21:14	12:19:16	0	-345	14°						
									44	Tmp	90	10.102	12:23:58	12:21:54	0	-363	14°						
									45	Tmp	92	0.434	12:26:40	12:24:49	0	-324	14°						
									46	Tmp	94	1.558	12:28:17	12:26:19	0	-345	14°						
									47	Tmp	95	4.014	12:31:27	12:29:29	0	-345	14°						
									48	Tmp	96	5.897	12:34:02	12:32:06	0	-339	14°						
									49	Tmp	100	6.628	12:35:23	12:33:32	0	-324	14°						
									50	Tmp	101	7.581	12:37:18	12:35:19	0	-348	14°						
									51	Tmp	104	8.731	12:39:10	12:37:35	0	-276	14°						
									52	Tmp	105	9.934	12:41:08	12:39:47	0	-234	14°						
									53	Tmp	106	10.213	12:41:37	12:40:32	0	-186	14°						
									54	Tmp	108	0.550	12:42:42	12:41:48	0	-153	14°						
									55	Tmp	110	2.679	12:47:03	12:49:00	0	+114	14°						
									56	Tmp	111	2.980	12:48:03	12:50:24	0	+138	14°						
									57	Tmp	112	3.472	12:48:54	12:51:30	0	+153	14°						
									58	Tmp	112	3.601	12:49:10	12:52:50	0	+217	14°						

**Moto Clube / Princesa Off Road / Zaitec**

<b>N u m</b>	<b>285</b>	<b>Equipe</b>	285 / Bruno Melo Lucena / Seu Lunga						
		<b>Patrocinador</b>	Equipacking						
		<b>Cat / NL / Largada</b>	JUNIOR / 48 / 08:55:30			<b>Cidade</b>	Petrolina		Wr 250 F

PC	Tp	Trc	KmPC	Ideal	Passagem	Pen	Pontos	Col	PC	Tp	Trc	KmPC	Ideal	Passagem	Pen	Pontos	Col
1	Tmp	3	0.875	09:04:47	09:04:42	0	-6	12°	59	Tmp	112	4.100	12:49:12	12:51:22	0	+127	13°
2	Tmp	5	3.706	09:08:59	09:09:51	0	+49	9°	60	Tmp	115	6.288	12:55:15	12:55:14	0	-0	13°
3	Tmp	6	4.396	09:10:18	09:13:07	0	+166	11°	61	Tmp	117	7.265	12:56:42	12:56:47	0	+2	13°
4	Tmp	9	1.332	09:15:40	09:15:39	0	-0	11°	62	Tmp	117	8.149	12:57:55	12:57:57	0	+0	13°
5	Tmp	11	2.366	09:17:16	09:17:14	0	-0	11°	63	Tmp	118	10.030	13:00:23	13:00:23	0	+0	13°
6	Tmp	12	3.599	09:20:35	09:20:46	0	+8	11°	64	Tmp	118	12.744	13:03:55	13:03:55	0	+0	13°
7	Tmp	14	4.326	09:22:30	09:23:30	0	+57	12°	65	Tmp	121	0.603	13:05:04	13:05:15	0	+8	13°
8	Tmp	16	5.226	09:24:40	09:27:06	0	+143	12°	66	Tmp	122	1.180	13:05:56	13:06:13	0	+14	12°
9	Tmp	20	7.247	09:29:13	09:31:38	0	+142	13°	67	Tmp	126	0.583	13:16:54	13:16:54	0	+0	12°
10	Tmp	20	8.875	09:32:00	09:34:23	0	+140	13°	68	Tmp	127	1.265	13:17:58	13:18:21	0	+20	12°
11	Tmp	24	1.784	09:39:07	09:39:13	0	+3	13°	69	Tmp	128	3.244	13:21:10	13:21:45	0	+32	12°
12	Tmp	25	2.622	09:41:35	09:42:53	0	+75	13°	70	Tmp	133	1.038	13:24:16	13:25:22	0	+63	12°
13	Tmp	25	3.122	09:43:35	09:46:03	0	+145	13°	71	Tmp	133	1.808	13:26:50	13:28:06	0	+73	11°
14	Tmp	26	3.479	09:44:58	09:47:37	0	+156	13°	72	Tmp	134	2.247	13:28:33	13:30:59	0	+143	11°
15	Tmp	27	3.949	09:46:21	09:48:50	0	+146	12°	73	Tmp	135	2.715	13:30:00	13:33:05	0	+182	11°
16	Tmp	30	5.142	09:48:40	09:52:33	0	+230	12°	74	Tmp	136	3.042	13:30:51	13:34:17	0	+203	11°
17	Tmp	35	2.078	10:01:47	10:02:00	0	+10	12°	75	Tmp	137	3.935	13:32:27	13:36:21	0	+231	11°
18	Tmp	37	3.208	10:03:33	10:03:47	0	+11	12°	76	Tmp	140	5.322	13:37:29	13:38:17	0	+45	11°
19	Tmp	42	8.878	10:10:57	10:11:39	0	+39	11°	77	Tmp	141	7.859	13:41:30	13:41:58	0	+25	11°
20	Tmp	47	2.382	10:15:42	10:16:14	0	+29	11°	78	Tmp	143	8.452	13:42:33	13:43:12	0	+36	11°
21	Tmp	49	4.920	10:18:48	10:19:12	0	+21	9°	79	Tmp	144	0.061	13:43:57	13:44:50	0	+50	11°
22	Tmp	50	8.401	10:23:06	10:23:23	0	+14	9°	80	Tmp	145	1.562	13:46:00	13:47:26	0	+83	11°
23	Tmp	52	0.201	10:25:41	10:26:01	0	+17	9°	81	Tmp	146	3.077	13:48:13	13:50:06	0	+110	11°
24	Tmp	54	2.350	10:28:59	10:29:26	0	+24	9°	82	Tmp	146	3.446	13:48:52	13:51:21	0	+146	11°
25	Tmp	58	0.230	10:34:44	10:34:38	0	-9	9°	83	Tmp	147	3.788	13:49:28	13:51:59	0	+148	11°
26	Tmp	60	1.457	10:36:36	10:36:36	0	+0	9°	84	Tmp	150	4.506	13:50:35	13:53:25	0	+167	11°
27	Tmp	60	1.887	10:37:17	10:37:11	0	-9	9°	85	Tmp	150	4.637	13:50:48	13:53:41	0	+170	11°
28	Tmp	64	3.320	10:39:54	10:40:03	0	+6	8°	86	Tmp	152	6.165	13:53:40	13:56:42	0	+179	11°
29	Tmp	66	4.183	10:41:34	10:41:56	0	+19	8°	87	Tmp	153	7.453	13:55:33	13:58:50	0	+194	11°
30	Tmp	69	5.179	10:43:27	10:43:40	0	+10	8°	88	Tmp	154	9.789	13:58:37	14:01:40	0	+180	11°
31	Tmp	72	8.898	10:48:35	10:48:44	0	+6	8°	89	Tmp	155	9.848	13:58:43	14:01:46	0	+180	11°
32	Tmp	73	0.331	10:49:59	10:50:24	0	+22	9°	90	Tmp	155	10.272	13:59:18	14:02:19	0	+178	11°
33	Tmp	74	1.352	10:52:04	10:52:42	0	+35	9°	<b>Etapa B</b> Num 285 Pen 0 PCZ 11 Total PP 3611 PG 10								
34	Tmp	75	1.883	10:53:10	10:53:53	0	+40	9°	Num 285 A 9° PG 12 B 11° PG 10 Tot PG 22 Col. 11°								
35	Tmp	75	2.771	10:54:41	10:55:33	0	+49	9°									
36	Tmp	75	3.774	10:56:25	10:57:25	0	+57	9°									
37	Tmp	76	4.206	10:57:04	10:58:03	0	+56	9°									
38	Tmp	76	5.470	10:58:55	11:00:00	0	+62	9°									
39	Tmp	78	11.908	11:07:20	11:07:19	0	-0	9°									

Etapa A	Num	285	Pen	0	PCZ	4	Total PP	2011	PG	12
40	Tmp	84	3.419	12:13:55	12:13:58	0	+0	2°		
41	Tmp	87	5.618	12:17:05	12:17:30	0	+22	13°		
42	Tmp	88	6.046	12:17:52	12:18:30	0	+35	13°		
43	Tmp	89	7.837	12:20:14	12:20:23	0	+6	13°		
44	Tmp	90	10.102	12:22:58	12:22:55	0	-0	13°		
45	Tmp	92	0.434	12:25:40	12:25:46	0	+3	13°		
46	Tmp	94	1.558	12:27:17	12:27:14	0	-0	13°		
47	Tmp	95	4.014	12:30:27	12:30:28	0	+0	12°		
48	Tmp	96	5.897	12:33:02	12:33:03	0	+0	12°		
49	Tmp	100	6.628	12:34:23	12:34:22	0	-0	12°		
50	Tmp	101	7.581	12:36:18	12:36:12	0	-9	12°		
51	Tmp	104	8.731	12:38:10	12:38:29	0	+16	12°		
52	Tmp	105	9.934	12:40:08	12:40:38	0	+27	12°		
53	Tmp	106	10.213	12:40:37	12:41:17	0	+37	13°		
54	Tmp	108	0.550	12:41:42	12:42:34	0	+49	13°		
55	Tmp	110	2.679	12:46:03	12:47:34	0	+88	13°		
56	Tmp	111	2.980	12:47:03	12:48:47	0	+101	13°		
57	Tmp	112	3.472	12:47:54	12:49:46	0	+109	13°		
58	Tmp	112	3.601	12:48:10	12:50:13	0	+120	13°		



**Moto Clube / Princesa Off Road / Zaitec**