

N u m	25	Equipe	25 / Joao Benedito V. de Andrade Jr / Bene						
		Patrocinador							
		Cat / NL / Largada	Junior / 39 / 09:07:30	Cidade	Sto Ant de Jesus				

PC	Tp	Trc	KmPC	Ideal	Passagem	Pen	Pontos	Col	PC	Tp	Trc	KmPC	Ideal	Passagem	Pen	Pontos	Col
1	Tmp	3	0.536	09:13:19	09:13:22	0	+0	8°	70	Tmp	105	5.097	12:44:45	12:44:47	0	+0	10°
2	Tmp	4	0.627	09:13:28	09:13:32	0	+1	10°	71	Tmp	107	6.580	12:47:22	12:47:28	0	+3	12°
3	Tmp	4	0.980	09:14:05	09:14:26	0	+18	10°	72	Tmp	108	7.058	12:48:22	12:48:22	0	+0	10°
4	Tmp	4	1.073	09:14:15	09:14:40	0	+22	9°	73	Tmp	108	7.179	12:48:46	12:48:41	0	-6	9°
5	Tmp	6	2.182	09:16:19	09:16:30	0	+8	4°	74	Tmp	110	0.701	12:50:35	12:50:38	0	+0	9°
6	Tmp	7	5.177	09:20:39	09:20:41	0	+0	3°	75	Tmp	112	1.456	12:52:41	12:52:42	0	+0	8°
7	Tmp	8	7.550	09:24:02	09:23:58	0	-3	3°	76	Tmp	113	1.872	12:53:24	12:53:25	0	+0	6°
8	Tmp	8	8.149	09:25:03	09:25:01	0	-0	2°	77	Tmp	114	2.692	12:54:36	12:54:36	0	+0	6°
11	Tmp	8	8.740	09:26:04	09:26:07	0	+0	2°	78	Tmp	115	4.612	13:00:00	13:00:08	0	+5	6°
12	Tmp	11	1.502	09:29:55	09:30:04	0	+6	3°	79	Tmp	116	4.770	13:00:21	13:00:30	0	+6	6°
13	Tmp	11	1.831	09:30:33	09:30:47	0	+11	5°	80	Tmp	118	5.258	13:01:25	13:01:37	0	+9	6°
14	Tmp	14	3.051	09:32:24	09:32:33	0	+6	4°	81	Tmp	119	6.277	13:03:30	13:03:27	0	-0	6°
15	Tmp	14	4.313	09:34:07	09:34:11	0	+1	6°	82	Tmp	120	7.519	13:06:01	13:06:00	0	-0	6°
16	Tmp	15	5.222	09:35:33	09:36:33	0	+57	8°	83	Tmp	121	7.783	13:06:31	13:06:30	0	-0	6°
17	Tmp	17	5.785	09:36:31	09:37:22	0	+48	10°	84	Tmp	123	8.670	13:08:18	13:08:18	0	+0	6°
18	Tmp	17	6.991	09:38:17	09:38:50	0	+30	11°	85	Tmp	124	9.940	13:10:34	13:10:37	0	+0	5°
19	Tmp	20	1.561	09:40:58	09:40:53	0	-6	11°	86	Tmp	126	0.549	13:11:32	13:11:33	0	+0	4°
20	Tmp	21	2.057	09:41:49	09:41:50	0	+0	11°	87	Tmp	128	1.055	13:12:37	13:12:46	0	+6	5°
21	Tmp	22	2.695	09:43:02	09:43:06	0	+1	11°	88	Tmp	128	1.667	13:14:13	13:14:20	0	+4	5°
22	Tmp	23	3.296	09:44:30	09:44:45	0	+12	10°	89	Tmp	130	2.590	13:16:27	13:16:27	0	+0	5°
23	Tmp	25	1.880	09:51:42	09:51:44	0	+0	10°	90	Tmp	130	3.924	13:18:44	13:18:49	0	+2	4°
24	Tmp	26	2.876	09:53:23	09:53:23	0	+0	10°	91	Tmp	130	4.359	13:19:29	13:19:29	0	+0	4°
25	Tmp	28	3.796	09:55:05	09:55:10	0	+2	10°	92	Tmp	131	5.242	13:21:00	13:21:01	0	+0	4°
26	Tmp	28	5.411	09:57:51	09:57:56	0	+2	10°	93	Tmp	134	0.647	13:22:21	13:22:26	0	+2	4°
27	Tmp	31	6.298	09:59:32	09:59:46	0	+11	10°	94	Tmp	136	1.932	13:24:51	13:24:49	0	-0	4°
28	Tmp	32	7.502	10:02:04	10:02:10	0	+3	8°	95	Tmp	137	2.716	13:26:39	13:26:40	0	+0	4°
29	Tmp	33	7.636	10:02:23	10:02:38	0	+12	7°	96	Tmp	138	4.287	13:29:38	13:31:16	0	+95	10°
30	Tmp	34	7.922	10:03:14	10:03:21	0	+4	7°	97	Tmp	139	4.800	13:30:57	13:32:28	0	+88	12°
31	Tmp	34	8.287	10:04:05	10:04:06	0	+0	7°	98	Tmp	140	5.049	13:31:29	13:32:55	0	+83	12°
32	Tmp	35	8.585	10:04:58	10:04:58	0	+0	5°	99	Tmp	140	5.681	13:32:29	13:33:44	0	+72	13°
33	Tmp	37	0.636	10:06:37	10:06:50	0	+10	6°	109	Tmp	147	6.694	13:52:24	13:52:24	0	+0	12°
34	Tmp	38	0.889	10:07:17	10:08:27	0	+67	8°	110	Tmp	149	7.909	13:54:42	13:54:39	0	-0	12°
35	Tmp	39	1.158	10:07:57	10:09:20	0	+80	9°	Etapa B Num 25 Pen 0 PCZ 25 Total PP 391 PG 9								
36	Tmp	40	1.534	10:08:53	10:10:03	0	+67	10°	Num 25 A 7° PG 14 B 12° PG 9 Tot PG 23 Col. 9°								
37	Tmp	42	2.455	10:11:22	10:11:50	0	+25	10°									
39	Tmp	45	3.565	10:13:52	10:14:07	0	+12	10°	Moto Clube / Princesa Off Road / Zaitec								
40	Tmp	47	4.255	10:15:14	10:15:39	0	+22	10°									
41	Tmp	48	4.584	10:16:10	10:16:18	0	+5	10°									
42	Tmp	48	4.963	10:16:43	10:16:47	0	+1	10°									
43	Tmp	49	5.640	10:17:43	10:17:44	0	+0	10°									
44	Tmp	49	6.166	10:18:42	10:18:43	0	+0	10°									
45	Tmp	50	7.232	10:20:53	10:20:52	0	-0	10°									
46	Tmp	53	0.780	10:26:12	10:26:31	0	+16	9°									
47	Tmp	57	1.919	10:28:55	10:29:31	0	+33	8°									
48	Tmp	58	2.575	10:31:42	10:31:26	0	-39	7°									
49	Tmp	59	3.616	10:34:25	10:34:25	0	+0	6°									
50	Tmp	62	3.582	10:46:10	10:46:14	0	+1	6°									
56	Tmp	66	0.593	10:57:36	10:58:30	0	+51	7°									
58	Tmp	72	4.209	11:06:15	11:06:16	0	+0	7°									
59	Tmp	75	7.180	11:10:54	11:10:57	0	+0	7°									
60	Tmp	79	3.530	11:16:27	11:16:37	0	+7	7°									
Etapa A Num 25 Pen 0 PCZ 15 Total PP 700 PG 14																	
63	Tmp	95	0.344	12:23:10	12:23:12	0	+0	8°									
64	Tmp	99	2.722	12:27:24	12:27:37	0	+10	10°									
65	Tmp	101	6.826	12:32:56	12:32:59	0	+0	10°									
66	Tmp	102	8.277	12:34:46	12:34:49	0	+0	10°									
67	Tmp	103	2.188	12:40:09	12:40:11	0	+0	10°									
68	Tmp	104	2.865	12:41:13	12:41:14	0	+0	10°									
69	Tmp	104	4.794	12:44:16	12:44:16	0	+0	10°									

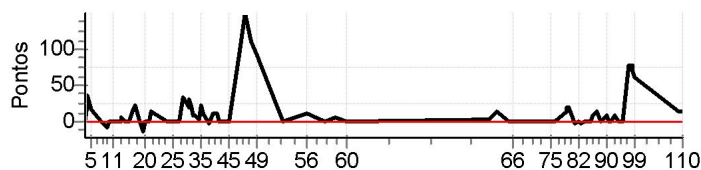
N u m	28	Equipe	28 / Rodrigo Silva de Souza / Rodrigo						
		Patrocinador	Gasauto, Omega Seguros, Princesa Off Road						
		Cat / NL / Largada	Junior / 40 / 09:08:00			Cidade	Feira de Santana	Honda Crf-250	

PC	Tp	Trc	KmPC	Ideal	Passagem	Pen	Pontos	Col
1	Tmp	3	0.536	09:13:49	09:13:55	0	+3	15°
2	Tmp	4	0.627	09:13:58	09:14:04	0	+3	14°
3	Tmp	4	0.980	09:14:35	09:14:58	0	+20	14°
4	Tmp	4	1.073	09:14:45	09:15:22	0	+34	14°
5	Tmp	6	2.182	09:16:49	09:17:07	0	+15	12°
6	Tmp	7	5.177	09:21:09	09:21:10	0	+0	12°
7	Tmp	8	7.550	09:24:32	09:24:26	0	-9	13°
8	Tmp	8	8.149	09:25:33	09:25:31	0	-0	12°
11	Tmp	8	8.740	09:26:34	09:26:32	0	-0	11°
12	Tmp	11	1.502	09:30:25	09:30:27	0	+0	11°
13	Tmp	11	1.831	09:31:03	09:31:11	0	+5	9°
14	Tmp	14	3.051	09:32:54	09:32:56	0	+0	9°
15	Tmp	14	4.313	09:34:37	09:34:38	0	+0	9°
16	Tmp	15	5.222	09:36:03	09:36:22	0	+16	6°
17	Tmp	17	5.785	09:37:01	09:37:24	0	+20	7°
18	Tmp	17	6.991	09:38:47	09:38:53	0	+3	7°
19	Tmp	20	1.561	09:41:28	09:41:20	0	-15	7°
20	Tmp	21	2.057	09:42:19	09:42:18	0	-0	7°
21	Tmp	22	2.695	09:43:32	09:43:32	0	+0	7°
22	Tmp	23	3.296	09:45:00	09:45:17	0	+14	7°
23	Tmp	25	1.880	09:52:12	09:52:13	0	+0	7°
24	Tmp	26	2.876	09:53:53	09:53:52	0	-0	7°
25	Tmp	28	3.796	09:55:35	09:55:36	0	+0	7°
26	Tmp	28	5.411	09:58:21	09:58:24	0	+0	7°
27	Tmp	31	6.298	10:00:02	10:00:36	0	+31	7°
28	Tmp	32	7.502	10:02:34	10:02:55	0	+18	7°
29	Tmp	33	7.636	10:02:53	10:03:26	0	+30	6°
30	Tmp	34	7.922	10:03:44	10:04:08	0	+21	6°
31	Tmp	34	8.287	10:04:35	10:04:45	0	+7	6°
32	Tmp	35	8.585	10:05:28	10:05:37	0	+6	6°
33	Tmp	37	0.636	10:07:07	10:07:13	0	+3	5°
34	Tmp	38	0.889	10:07:47	10:07:52	0	+2	5°
35	Tmp	39	1.158	10:08:27	10:08:52	0	+22	5°
36	Tmp	40	1.534	10:09:23	10:09:37	0	+11	4°
37	Tmp	42	2.455	10:11:52	10:11:48	0	-3	5°
39	Tmp	45	3.565	10:14:22	10:14:34	0	+9	5°
40	Tmp	47	4.255	10:15:44	10:15:57	0	+10	5°
41	Tmp	48	4.584	10:16:40	10:16:41	0	+0	5°
42	Tmp	48	4.963	10:17:13	10:17:15	0	+0	5°
43	Tmp	49	5.640	10:18:13	10:18:12	0	-0	5°
44	Tmp	49	6.166	10:19:12	10:19:13	0	+0	5°
45	Tmp	50	7.232	10:21:23	10:21:26	0	+0	5°
46	Tmp	53	0.780	10:26:42	10:28:15	0	+90	5°
47	Tmp	57	1.919	10:29:25	10:31:57	0	+149	7°
48	Tmp	58	2.575	10:32:12	10:34:05	0	+110	9°
49	Tmp	59	3.616	10:34:55	10:36:30	0	+92	9°
50	Tmp	62	3.582	10:46:40	10:46:41	0	+0	9°
56	Tmp	66	0.593	10:58:06	10:58:18	0	+9	8°
58	Tmp	72	4.209	11:06:45	11:06:42	0	-0	8°
59	Tmp	75	7.180	11:11:24	11:11:31	0	+4	8°
60	Tmp	79	3.530	11:16:57	11:16:58	0	+0	8°

PC	Tp	Trc	KmPC	Ideal	Passagem	Pen	Pontos	Col
70	Tmp	105	5.097	12:45:15	12:45:16	0	+0	13°
71	Tmp	107	6.580	12:47:52	12:47:55	0	+0	13°
72	Tmp	108	7.058	12:48:52	12:48:50	0	-0	12°
73	Tmp	108	7.179	12:49:16	12:49:16	0	+0	8°
74	Tmp	110	0.701	12:51:05	12:51:06	0	+0	7°
75	Tmp	112	1.456	12:53:11	12:53:10	0	-0	6°
76	Tmp	113	1.872	12:53:54	12:53:54	0	+0	4°
77	Tmp	114	2.692	12:55:06	12:55:03	0	-0	4°
78	Tmp	115	4.612	13:00:30	13:00:47	0	+14	7°
79	Tmp	116	4.770	13:00:51	13:01:11	0	+17	9°
80	Tmp	118	5.258	13:01:55	13:02:16	0	+18	11°
81	Tmp	119	6.277	13:04:00	13:03:56	0	-3	10°
82	Tmp	120	7.519	13:06:31	13:06:29	0	-0	10°
83	Tmp	121	7.783	13:07:01	13:06:57	0	-3	10°
84	Tmp	123	8.670	13:08:48	13:08:48	0	+0	10°
85	Tmp	124	9.940	13:11:04	13:11:07	0	+0	10°
86	Tmp	126	0.549	13:12:02	13:12:02	0	+0	9°
87	Tmp	128	1.055	13:13:07	13:13:17	0	+7	9°
88	Tmp	128	1.667	13:14:43	13:14:59	0	+13	10°
89	Tmp	130	2.590	13:16:57	13:17:00	0	+0	9°
90	Tmp	130	3.924	13:19:14	13:19:24	0	+7	9°
91	Tmp	130	4.359	13:19:59	13:19:58	0	-0	9°
92	Tmp	131	5.242	13:21:30	13:21:29	0	-0	9°
93	Tmp	134	0.647	13:22:51	13:23:00	0	+6	9°
94	Tmp	136	1.932	13:25:21	13:25:18	0	-0	9°
95	Tmp	137	2.716	13:27:09	13:27:08	0	-0	9°
96	Tmp	138	4.287	13:30:08	13:31:27	0	+76	13°
97	Tmp	139	4.800	13:31:27	13:32:46	0	+76	13°
98	Tmp	140	5.049	13:31:59	13:33:11	0	+69	13°
99	Tmp	140	5.681	13:32:59	13:34:02	0	+60	12°
109	Tmp	147	6.694	13:52:54	13:53:10	0	+13	13°
110	Tmp	149	7.909	13:55:12	13:55:29	0	+14	13°

Etapa B	Num 28	Pen 0	PCZ 22	Total PP 412	PG 8
----------------	---------------	--------------	---------------	---------------------	-------------

Num 28	A 8°	PG 13	B 13°	PG 8	Tot PG 21	Col. 11°
---------------	-------------	--------------	--------------	-------------	------------------	-----------------



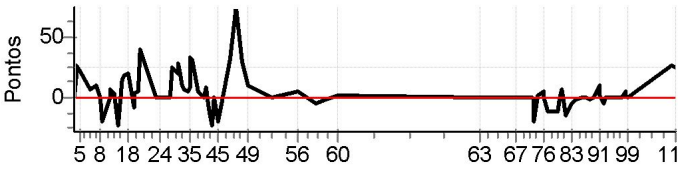
Moto Clube / Princesa Off Road / Zaitec
--

Etapa A	Num	28	Pen	0	PCZ	20	Total PP	784	PG	13
63	Tmp	95	0.344	12:23:40	12:23:46	0	+3	17°		
64	Tmp	99	2.722	12:27:54	12:28:10	0	+13	16°		
65	Tmp	101	6.826	12:33:26	12:33:24	0	-0	16°		
66	Tmp	102	8.277	12:35:16	12:35:17	0	+0	16°		
67	Tmp	103	2.188	12:40:39	12:40:37	0	-0	15°		
68	Tmp	104	2.865	12:41:43	12:41:42	0	-0	14°		
69	Tmp	104	4.794	12:44:46	12:44:43	0	-0	13°		

N u m	41	Equipe	41 / Adriano Leite Palmeira / Burracha						
		Patrocinador	Floricultura Paraiso						
		Cat / NL / Largada	Junior / 45 / 09:10:30	Cidade	Salvador	Honda Cr-30			

PC	Tp	Trc	KmPC	Ideal	Passagem	Pen	Pontos	Col	PC	Tp	Trc	KmPC	Ideal	Passagem	Pen	Pontos	Col
1	Tmp	3	0.536	09:16:19	09:16:20	0	+0	5°	70	Tmp	105	5.097	12:47:45	12:47:44	0	-0	12°
2	Tmp	4	0.627	09:16:28	09:16:29	0	+0	3°	71	Tmp	107	6.580	12:50:22	12:50:24	0	+0	11°
3	Tmp	4	0.980	09:17:05	09:17:22	0	+14	2°	72	Tmp	108	7.058	12:51:22	12:51:17	0	-6	15°
4	Tmp	4	1.073	09:17:15	09:17:39	0	+21	5°	73	Tmp	108	7.179	12:51:46	12:51:38	0	-15	15°
5	Tmp	6	2.182	09:19:19	09:19:48	0	+26	8°	74	Tmp	110	0.701	12:53:35	12:53:42	0	+4	14°
6	Tmp	7	5.177	09:23:39	09:23:39	0	+0	7°	75	Tmp	112	1.456	12:55:41	12:55:40	0	-0	14°
7	Tmp	8	7.550	09:27:02	09:26:59	0	-0	6°	76	Tmp	113	1.872	12:56:24	12:56:22	0	-0	14°
8	Tmp	8	8.149	09:28:03	09:28:01	0	-0	5°	77	Tmp	114	2.692	12:57:36	12:57:34	0	-0	11°
11	Tmp	8	8.740	09:29:04	09:29:04	0	+0	4°	78	Tmp	115	4.612	13:03:00	13:02:57	0	-0	10°
12	Tmp	11	1.502	09:32:55	09:32:55	0	+0	4°	79	Tmp	116	4.770	13:03:21	13:03:23	0	+0	8°
13	Tmp	11	1.831	09:33:33	09:33:39	0	+3	4°	80	Tmp	118	5.258	13:04:25	13:04:32	0	+4	7°
14	Tmp	14	3.051	09:35:24	09:35:39	0	+12	5°	81	Tmp	119	6.277	13:06:30	13:06:32	0	+0	7°
15	Tmp	14	4.313	09:37:07	09:37:07	0	+0	4°	82	Tmp	120	7.519	13:09:01	13:09:00	0	-0	7°
16	Tmp	15	5.222	09:38:33	09:38:41	0	+5	3°	83	Tmp	121	7.783	13:09:31	13:09:31	0	+0	7°
17	Tmp	17	5.785	09:39:31	09:39:37	0	+3	3°	84	Tmp	123	8.670	13:11:18	13:11:21	0	+0	7°
18	Tmp	17	6.991	09:41:17	09:41:15	0	-0	3°	85	Tmp	124	9.940	13:13:34	13:13:34	0	+0	6°
19	Tmp	20	1.561	09:43:58	09:43:52	0	-9	3°	86	Tmp	126	0.549	13:14:32	13:14:30	0	-0	6°
20	Tmp	21	2.057	09:44:49	09:44:47	0	-0	3°	87	Tmp	128	1.055	13:15:37	13:15:45	0	+5	6°
21	Tmp	22	2.695	09:46:02	09:46:01	0	-0	3°	88	Tmp	128	1.667	13:17:13	13:17:16	0	+0	4°
22	Tmp	23	3.296	09:47:30	09:47:50	0	+17	3°	89	Tmp	130	2.590	13:19:27	13:19:29	0	+0	4°
23	Tmp	25	1.880	09:54:42	09:54:43	0	+0	3°	90	Tmp	130	3.924	13:21:44	13:21:52	0	+5	5°
24	Tmp	26	2.876	09:56:23	09:56:24	0	+0	3°	91	Tmp	130	4.359	13:22:29	13:22:27	0	-0	5°
25	Tmp	28	3.796	09:58:05	09:58:09	0	+1	3°	92	Tmp	131	5.242	13:24:00	13:23:59	0	-0	5°
26	Tmp	28	5.411	10:00:51	10:00:52	0	+0	3°	93	Tmp	134	0.647	13:25:21	13:25:29	0	+5	5°
27	Tmp	31	6.298	10:02:32	10:02:48	0	+13	3°	94	Tmp	136	1.932	13:27:51	13:27:48	0	-0	5°
28	Tmp	32	7.502	10:05:04	10:05:26	0	+19	3°	95	Tmp	137	2.716	13:29:39	13:29:39	0	+0	5°
29	Tmp	33	7.636	10:05:23	10:05:57	0	+31	4°	96	Tmp	138	4.287	13:32:38	13:32:50	0	+9	4°
30	Tmp	34	7.922	10:06:14	10:06:41	0	+24	4°	97	Tmp	139	4.800	13:33:57	13:34:12	0	+12	4°
31	Tmp	34	8.287	10:07:05	10:07:23	0	+15	4°	98	Tmp	140	5.049	13:34:29	13:34:38	0	+6	4°
32	Tmp	35	8.585	10:07:58	10:08:21	0	+20	4°	99	Tmp	140	5.681	13:35:29	13:35:35	0	+3	4°
33	Tmp	37	0.636	10:09:37	10:09:54	0	+14	4°	109	Tmp	147	6.694	13:55:24	13:55:26	0	+0	4°
34	Tmp	38	0.889	10:10:17	10:10:31	0	+11	4°	110	Tmp	149	7.909	13:57:42	13:57:43	0	+0	4°
35	Tmp	39	1.158	10:10:57	10:11:31	0	+31	4°	Etapa B Num 41 Pen 0 PCZ 26 Total PP 87 PG 18								
36	Tmp	40	1.534	10:11:53	10:12:16	0	+20	5°	Num 41 A 2° PG 22 B 4° PG 18 Tot PG 40 Col. 1°								
37	Tmp	42	2.455	10:14:22	10:14:20	0	-0	4°									
39	Tmp	45	3.565	10:16:52	10:16:58	0	+3	4°	Moto Clube / Princesa Off Road / Zaitec								
40	Tmp	47	4.255	10:18:14	10:18:27	0	+10	4°									
41	Tmp	48	4.584	10:19:10	10:19:06	0	-3	4°									
42	Tmp	48	4.963	10:19:43	10:19:45	0	+0	4°									
43	Tmp	49	5.640	10:20:43	10:20:41	0	-0	4°									
44	Tmp	49	6.166	10:21:42	10:21:43	0	+0	4°									
45	Tmp	50	7.232	10:23:53	10:23:52	0	-0	4°									
46	Tmp	53	0.780	10:29:12	10:29:18	0	+3	3°									
47	Tmp	57	1.919	10:31:55	10:32:21	0	+23	2°									
48	Tmp	58	2.575	10:34:42	10:34:32	0	-21	2°									
49	Tmp	59	3.616	10:37:25	10:37:20	0	-6	2°									
50	Tmp	62	3.582	10:49:10	10:49:10	0	+0	2°									
56	Tmp	66	0.593	11:00:36	11:01:04	0	+25	2°									
58	Tmp	72	4.209	11:09:15	11:09:12	0	-0	2°									
59	Tmp	75	7.180	11:13:54	11:13:58	0	+1	2°									
60	Tmp	79	3.530	11:19:27	11:19:34	0	+4	2°									
Etapa A Num 41 Pen 0 PCZ 21 Total PP 408 PG 22																	
63	Tmp	95	0.344	12:26:10	12:26:06	0	-3	15°									
64	Tmp	99	2.722	12:30:24	12:30:37	0	+10	13°									
65	Tmp	101	6.826	12:35:56	12:35:55	0	-0	12°									
66	Tmp	102	8.277	12:37:46	12:37:47	0	+0	12°									
67	Tmp	103	2.188	12:43:09	12:43:08	0	-0	12°									
68	Tmp	104	2.865	12:44:13	12:44:13	0	+0	12°									
69	Tmp	104	4.794	12:47:16	12:47:13	0	-0	12°									

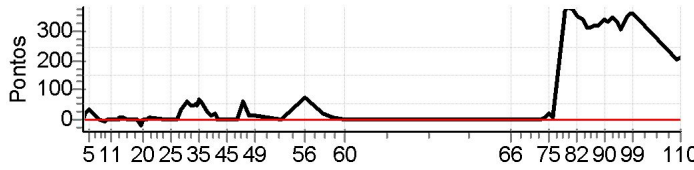
N u m	67	Equipe	67 / Flavio S de Paiva / Gazela						
		Patrocinador							
		Cat / NL / Largada	Junior / 43 / 09:09:30	Cidade	Cruz das Almas				

PC	Tp	Trc	KmPC	Ideal	Passagem	Pen	Pontos	Col	PC	Tp	Trc	KmPC	Ideal	Passagem	Pen	Pontos	Col
1	Tmp	3	0.536	09:15:19	09:15:18	0	-0	7°	70	Tmp	105	5.097	12:46:45	12:46:43	0	-0	2°
2	Tmp	4	0.627	09:15:28	09:15:27	0	-0	5°	71	Tmp	107	6.580	12:49:22	12:49:23	0	+0	1°
3	Tmp	4	0.980	09:16:05	09:16:25	0	+17	5°	72	Tmp	108	7.058	12:50:22	12:50:18	0	-3	4°
4	Tmp	4	1.073	09:16:15	09:16:44	0	+26	10°	73	Tmp	108	7.179	12:50:46	12:50:36	0	-21	12°
5	Tmp	6	2.182	09:18:19	09:18:43	0	+21	10°	74	Tmp	110	0.701	12:52:35	12:52:39	0	+1	11°
6	Tmp	7	5.177	09:22:39	09:22:48	0	+6	10°	75	Tmp	112	1.456	12:54:41	12:54:48	0	+4	12°
7	Tmp	8	7.550	09:26:02	09:26:15	0	+10	11°	76	Tmp	113	1.872	12:55:24	12:55:25	0	+0	10°
8	Tmp	8	8.149	09:27:03	09:27:01	0	-0	11°	77	Tmp	114	2.692	12:56:36	12:56:29	0	-12	14°
11	Tmp	8	8.740	09:28:04	09:27:54	0	-21	13°	78	Tmp	115	4.612	13:02:00	13:01:53	0	-12	13°
12	Tmp	11	1.502	09:31:55	09:31:56	0	+0	13°	79	Tmp	116	4.770	13:02:21	13:02:22	0	+0	11°
13	Tmp	11	1.831	09:32:33	09:32:42	0	+6	13°	80	Tmp	118	5.258	13:03:25	13:03:34	0	+6	9°
14	Tmp	14	3.051	09:34:24	09:34:30	0	+3	12°	81	Tmp	119	6.277	13:05:30	13:05:22	0	-15	11°
15	Tmp	14	4.313	09:36:07	09:35:56	0	-24	14°	82	Tmp	120	7.519	13:08:01	13:07:56	0	-6	11°
16	Tmp	15	5.222	09:37:33	09:37:50	0	+14	10°	83	Tmp	121	7.783	13:08:31	13:08:26	0	-6	11°
17	Tmp	17	5.785	09:38:31	09:38:52	0	+18	9°	84	Tmp	123	8.670	13:10:18	13:10:14	0	-3	11°
18	Tmp	17	6.991	09:40:17	09:40:40	0	+20	9°	85	Tmp	124	9.940	13:12:34	13:12:37	0	+0	11°
19	Tmp	20	1.561	09:42:58	09:42:52	0	-9	10°	86	Tmp	126	0.549	13:13:32	13:13:32	0	+0	11°
20	Tmp	21	2.057	09:43:49	09:43:55	0	+3	10°	87	Tmp	128	1.055	13:14:37	13:14:38	0	+0	11°
21	Tmp	22	2.695	09:45:02	09:45:10	0	+5	10°	88	Tmp	128	1.667	13:16:13	13:16:09	0	-3	11°
22	Tmp	23	3.296	09:46:30	09:47:13	0	+40	11°	89	Tmp	130	2.590	13:18:27	13:18:29	0	+0	10°
23	Tmp	25	1.880	09:53:42	09:53:43	0	+0	11°	90	Tmp	130	3.924	13:20:44	13:20:56	0	+9	10°
24	Tmp	26	2.876	09:55:23	09:55:24	0	+0	11°	91	Tmp	130	4.359	13:21:29	13:21:34	0	+2	10°
25	Tmp	28	3.796	09:57:05	09:57:08	0	+0	11°	92	Tmp	131	5.242	13:23:00	13:22:55	0	-6	10°
26	Tmp	28	5.411	09:59:51	09:59:52	0	+0	11°	93	Tmp	134	0.647	13:24:21	13:24:24	0	+0	10°
27	Tmp	31	6.298	10:01:32	10:01:59	0	+24	11°	94	Tmp	136	1.932	13:26:51	13:26:50	0	-0	10°
28	Tmp	32	7.502	10:04:04	10:04:27	0	+20	10°	95	Tmp	137	2.716	13:28:39	13:28:38	0	-0	10°
29	Tmp	33	7.636	10:04:23	10:04:54	0	+28	10°	96	Tmp	138	4.287	13:31:38	13:31:38	0	+0	6°
30	Tmp	34	7.922	10:05:14	10:05:37	0	+20	10°	97	Tmp	139	4.800	13:32:57	13:33:04	0	+4	5°
31	Tmp	34	8.287	10:06:05	10:06:17	0	+9	9°	98	Tmp	140	5.049	13:33:29	13:33:33	0	+1	5°
32	Tmp	35	8.585	10:06:58	10:07:08	0	+7	9°	99	Tmp	140	5.681	13:34:29	13:34:31	0	+0	5°
33	Tmp	37	0.636	10:08:37	10:08:45	0	+5	9°	109	Tmp	147	6.694	13:54:24	13:54:53	0	+26	5°
34	Tmp	38	0.889	10:09:17	10:09:28	0	+8	9°	110	Tmp	149	7.909	13:56:42	13:57:10	0	+25	9°
35	Tmp	39	1.158	10:09:57	10:10:33	0	+33	8°	Etapa B Num 67 Pen 0 PCZ 20 Total PP 165 PG 12								
36	Tmp	40	1.534	10:10:53	10:11:27	0	+31	8°	Num 67 A 6° PG 15 B 9° PG 12 Tot PG 27 Col. 7°								
37	Tmp	42	2.455	10:13:22	10:13:29	0	+4	8°									
39	Tmp	45	3.565	10:15:52	10:15:52	0	+0	8°	Moto Clube / Princesa Off Road / Zaitec								
40	Tmp	47	4.255	10:17:14	10:17:25	0	+8	8°									
41	Tmp	48	4.584	10:18:10	10:18:05	0	-6	9°									
42	Tmp	48	4.963	10:18:43	10:18:35	0	-15	9°									
43	Tmp	49	5.640	10:19:43	10:19:32	0	-24	9°									
44	Tmp	49	6.166	10:20:42	10:20:39	0	-0	9°									
45	Tmp	50	7.232	10:22:53	10:22:43	0	-21	9°									
46	Tmp	53	0.780	10:28:12	10:28:46	0	+31	8°									
47	Tmp	57	1.919	10:30:55	10:32:13	0	+75	9°									
48	Tmp	58	2.575	10:33:42	10:34:14	0	+29	8°									
49	Tmp	59	3.616	10:36:25	10:36:38	0	+10	7°									
50	Tmp	62	3.582	10:48:10	10:48:11	0	+0	7°									
56	Tmp	66	0.593	10:59:36	10:59:44	0	+5	6°									
58	Tmp	72	4.209	11:08:15	11:08:10	0	-6	6°									
59	Tmp	75	7.180	11:12:54	11:12:50	0	-3	6°									
60	Tmp	79	3.530	11:18:27	11:18:31	0	+1	6°									
Etapa A Num 67 Pen 0 PCZ 11 Total PP 666 PG 15																	
63	Tmp	95	0.344	12:25:10	12:25:10	0	+0	6°									
64	Tmp	99	2.722	12:29:24	12:29:25	0	+0	3°									
65	Tmp	101	6.826	12:34:56	12:34:53	0	-0	3°									
66	Tmp	102	8.277	12:36:46	12:36:46	0	+0	2°									
67	Tmp	103	2.188	12:42:09	12:42:06	0	-0	2°									
68	Tmp	104	2.865	12:43:13	12:43:12	0	-0	2°									
69	Tmp	104	4.794	12:46:16	12:46:15	0	-0	2°									

N u m	72	Equipe	72 / Ladislau Souza Freitas / Lau						
		Patrocinador	Stc, Loja do Lap Top						
		Cat / NL / Largada	Junior / 47 / 09:11:30	Cidade	Salvador	Honda Crf-230			

PC	Tp	Trc	KmPC	Ideal	Passagem	Pen	Pontos	Col	PC	Tp	Trc	KmPC	Ideal	Passagem	Pen	Pontos	Col
1	Tmp	3	0.536	09:17:19	09:17:18	0	-0	3°	70	Tmp	105	5.097	12:48:45	12:48:50	0	+2	15°
2	Tmp	4	0.627	09:17:28	09:17:29	0	+0	1°	71	Tmp	107	6.580	12:51:22	12:51:24	0	+0	15°
3	Tmp	4	0.980	09:18:05	09:18:26	0	+18	6°	72	Tmp	108	7.058	12:52:22	12:52:23	0	+0	14°
4	Tmp	4	1.073	09:18:15	09:18:51	0	+33	12°	73	Tmp	108	7.179	12:52:46	12:52:50	0	+1	10°
5	Tmp	6	2.182	09:20:19	09:20:48	0	+26	13°	74	Tmp	110	0.701	12:54:35	12:54:43	0	+5	12°
6	Tmp	7	5.177	09:24:39	09:24:37	0	-0	13°	75	Tmp	112	1.456	12:56:41	12:56:40	0	-0	11°
7	Tmp	8	7.550	09:28:02	09:27:59	0	-0	9°	76	Tmp	113	1.872	12:57:24	12:57:20	0	-3	9°
8	Tmp	8	8.149	09:29:03	09:29:02	0	-0	9°	77	Tmp	114	2.692	12:58:36	12:58:31	0	-6	10°
11	Tmp	8	8.740	09:30:04	09:30:08	0	+1	9°	78	Tmp	115	4.612	13:04:00	13:04:27	0	+24	14°
12	Tmp	11	1.502	09:33:55	09:34:02	0	+4	10°	79	Tmp	116	4.770	13:04:21	13:04:53	0	+29	16°
13	Tmp	11	1.831	09:34:33	09:34:50	0	+14	11°	80	Tmp	118	5.258	13:05:25	13:05:59	0	+31	16°
14	Tmp	14	3.051	09:36:24	09:36:42	0	+15	13°	81	Tmp	119	6.277	13:07:30	13:07:40	0	+7	16°
15	Tmp	14	4.313	09:38:07	09:38:10	0	+0	12°	82	Tmp	120	7.519	13:10:01	13:09:53	0	-15	16°
16	Tmp	15	5.222	09:39:33	09:39:36	0	+0	7°	83	Tmp	121	7.783	13:10:31	13:10:30	0	-0	15°
17	Tmp	17	5.785	09:40:31	09:40:34	0	+0	6°	84	Tmp	123	8.670	13:12:18	13:12:14	0	-3	16°
18	Tmp	17	6.991	09:42:17	09:42:16	0	-0	6°	85	Tmp	124	9.940	13:14:34	13:14:34	0	+0	16°
19	Tmp	20	1.561	09:44:58	09:44:53	0	-6	6°	86	Tmp	126	0.549	13:15:32	13:15:31	0	-0	16°
20	Tmp	21	2.057	09:45:49	09:45:49	0	+0	6°	87	Tmp	128	1.055	13:16:37	13:16:37	0	+0	15°
21	Tmp	22	2.695	09:47:02	09:47:00	0	-0	6°	88	Tmp	128	1.667	13:18:13	13:18:10	0	-0	15°
22	Tmp	23	3.296	09:48:30	09:49:01	0	+28	6°	89	Tmp	130	2.590	13:20:27	13:20:25	0	-0	15°
23	Tmp	25	1.880	09:55:42	09:55:44	0	+0	6°	90	Tmp	130	3.924	13:22:44	13:22:47	0	+0	14°
24	Tmp	26	2.876	09:57:23	09:57:22	0	-0	6°	91	Tmp	130	4.359	13:23:29	13:23:25	0	-3	13°
25	Tmp	28	3.796	09:59:05	09:59:09	0	+1	6°	92	Tmp	131	5.242	13:25:00	13:24:59	0	-0	12°
26	Tmp	28	5.411	10:01:51	10:01:51	0	+0	6°	93	Tmp	134	0.647	13:26:21	13:26:18	0	-0	12°
27	Tmp	31	6.298	10:03:32	10:03:43	0	+8	6°	94	Tmp	136	1.932	13:28:51	13:28:49	0	-0	12°
28	Tmp	32	7.502	10:06:04	10:06:35	0	+28	5°	95	Tmp	137	2.716	13:30:39	13:30:35	0	-3	12°
29	Tmp	33	7.636	10:06:23	10:07:02	0	+36	5°	96	Tmp	138	4.287	13:33:38	13:34:04	0	+23	11°
30	Tmp	34	7.922	10:07:14	10:07:42	0	+25	5°	97	Tmp	139	4.800	13:34:57	13:35:28	0	+28	11°
31	Tmp	34	8.287	10:08:05	10:08:22	0	+14	5°	98	Tmp	140	5.049	13:35:29	13:35:57	0	+25	10°
32	Tmp	35	8.585	10:08:58	10:09:16	0	+15	7°	99	Tmp	140	5.681	13:36:29	13:36:59	0	+27	10°
33	Tmp	37	0.636	10:10:37	10:10:55	0	+15	7°	109	Tmp	147	6.694	13:56:24	13:56:21	0	-0	10°
34	Tmp	38	0.889	10:11:17	10:11:33	0	+13	6°	110	Tmp	149	7.909	13:58:42	13:58:39	0	-0	10°
35	Tmp	39	1.158	10:11:57	10:12:43	0	+43	7°	Etapa B Num 72 Pen 0 PCZ 20 Total PP 252 PG 11								
36	Tmp	40	1.534	10:12:53	10:13:27	0	+31	7°	Num 72 A 4° PG 18 B 10° PG 11 Tot PG 29 Col. 6°								
37	Tmp	42	2.455	10:15:22	10:15:18	0	-3	7°									
39	Tmp	45	3.565	10:17:52	10:17:59	0	+4	7°	Moto Clube / Princesa Off Road / Zaitec								
40	Tmp	47	4.255	10:19:14	10:19:26	0	+9	7°									
41	Tmp	48	4.584	10:20:10	10:20:08	0	-0	6°									
42	Tmp	48	4.963	10:20:43	10:20:47	0	+1	6°									
43	Tmp	49	5.640	10:21:43	10:21:39	0	-3	6°									
44	Tmp	49	6.166	10:22:42	10:22:43	0	+0	6°									
45	Tmp	50	7.232	10:24:53	10:24:52	0	-0	6°									
46	Tmp	53	0.780	10:30:12	10:30:22	0	+7	4°									
47	Tmp	57	1.919	10:32:55	10:33:34	0	+36	4°									
48	Tmp	58	2.575	10:35:42	10:35:38	0	-3	3°									
49	Tmp	59	3.616	10:38:25	10:38:23	0	-0	3°									
50	Tmp	62	3.582	10:50:10	10:50:10	0	+0	3°									
56	Tmp	66	0.593	11:01:36	11:02:33	0	+54	4°									
58	Tmp	72	4.209	11:10:15	11:10:10	0	-6	4°									
59	Tmp	75	7.180	11:14:54	11:14:55	0	+0	4°									
60	Tmp	79	3.530	11:20:27	11:20:30	0	+0	4°									
Etapa A Num 72 Pen 0 PCZ 21 Total PP 500 PG 18																	
63	Tmp	95	0.344	12:27:10	12:27:09	0	-0	3°									
64	Tmp	99	2.722	12:31:24	12:31:41	0	+14	14°									
65	Tmp	101	6.826	12:36:56	12:36:58	0	+0	14°									
66	Tmp	102	8.277	12:38:46	12:38:45	0	-0	14°									
67	Tmp	103	2.188	12:44:09	12:44:07	0	-0	13°									
68	Tmp	104	2.865	12:45:13	12:45:14	0	+0	13°									
69	Tmp	104	4.794	12:48:16	12:48:12	0	-3	15°									

N u m	118	Equipe	118 / Cid C de Souza						
		Patrocinador							
		Cat / NL / Largada	Junior / 46 / 09:11:00	Cidade					

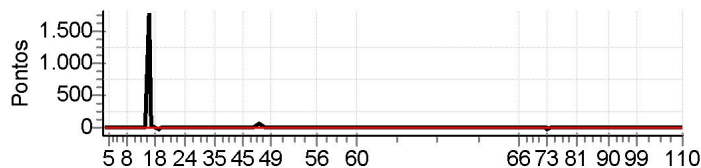
PC	Tp	Trc	KmPC	Ideal	Passagem	Pen	Pontos	Col	PC	Tp	Trc	KmPC	Ideal	Passagem	Pen	Pontos	Col
1	Tmp	3	0.536	09:16:49	09:16:50	0	+0	4°	70	Tmp	105	5.097	12:48:15	12:48:15	0	+0	1°
2	Tmp	4	0.627	09:16:58	09:17:00	0	+0	2°	71	Tmp	107	6.580	12:50:52	12:50:56	0	+1	3°
3	Tmp	4	0.980	09:17:35	09:17:55	0	+17	4°	72	Tmp	108	7.058	12:51:52	12:51:49	0	-0	2°
4	Tmp	4	1.073	09:17:45	09:18:08	0	+20	7°	73	Tmp	108	7.179	12:52:16	12:52:14	0	-0	2°
5	Tmp	6	2.182	09:19:49	09:20:25	0	+33	11°	74	Tmp	110	0.701	12:54:05	12:54:13	0	+5	3°
6	Tmp	7	5.177	09:24:09	09:24:10	0	+0	9°	75	Tmp	112	1.456	12:56:11	12:56:33	0	+19	10°
7	Tmp	8	7.550	09:27:32	09:27:26	0	-9	10°	76	Tmp	113	1.872	12:56:54	12:57:10	0	+13	13°
8	Tmp	8	8.149	09:28:33	09:28:31	0	-0	10°	77	Tmp	114	2.692	12:58:06	12:58:18	0	+9	15°
11	Tmp	8	8.740	09:29:34	09:29:34	0	+0	10°	78	Tmp	115	4.612	13:03:30	13:09:37	0	+364	17°
12	Tmp	11	1.502	09:33:25	09:33:27	0	+0	9°	79	Tmp	116	4.770	13:03:51	13:10:02	0	+368	17°
13	Tmp	11	1.831	09:34:03	09:34:09	0	+3	8°	80	Tmp	118	5.258	13:04:55	13:11:21	0	+383	17°
14	Tmp	14	3.051	09:35:54	09:36:00	0	+3	8°	81	Tmp	119	6.277	13:07:00	13:13:20	0	+377	17°
15	Tmp	14	4.313	09:37:37	09:37:36	0	-0	8°	82	Tmp	120	7.519	13:09:31	13:15:33	0	+359	17°
16	Tmp	15	5.222	09:39:03	09:39:08	0	+2	4°	83	Tmp	121	7.783	13:10:01	13:15:56	0	+352	17°
17	Tmp	17	5.785	09:40:01	09:40:05	0	+1	4°	84	Tmp	123	8.670	13:11:48	13:17:31	0	+340	17°
18	Tmp	17	6.991	09:41:47	09:41:46	0	-0	4°	85	Tmp	124	9.940	13:14:04	13:19:24	0	+317	17°
19	Tmp	20	1.561	09:44:28	09:44:18	0	-21	4°	86	Tmp	126	0.549	13:15:02	13:20:20	0	+315	17°
20	Tmp	21	2.057	09:45:19	09:45:19	0	+0	4°	87	Tmp	128	1.055	13:16:07	13:21:24	0	+314	17°
21	Tmp	22	2.695	09:46:32	09:46:29	0	-0	4°	88	Tmp	128	1.667	13:17:43	13:23:07	0	+321	17°
22	Tmp	23	3.296	09:48:00	09:48:06	0	+3	4°	89	Tmp	130	2.590	13:19:57	13:25:18	0	+318	17°
23	Tmp	25	1.880	09:55:12	09:55:14	0	+0	4°	90	Tmp	130	3.924	13:22:14	13:28:01	0	+344	17°
24	Tmp	26	2.876	09:56:53	09:56:52	0	-0	4°	91	Tmp	130	4.359	13:22:59	13:28:40	0	+338	17°
25	Tmp	28	3.796	09:58:35	09:58:36	0	+0	4°	92	Tmp	131	5.242	13:24:30	13:30:08	0	+335	17°
26	Tmp	28	5.411	10:01:21	10:01:20	0	-0	4°	93	Tmp	134	0.647	13:25:51	13:31:42	0	+348	17°
27	Tmp	31	6.298	10:03:02	10:03:38	0	+33	4°	94	Tmp	136	1.932	13:28:21	13:33:56	0	+332	17°
28	Tmp	32	7.502	10:05:34	10:06:36	0	+59	6°	95	Tmp	137	2.716	13:30:09	13:35:21	0	+309	17°
29	Tmp	33	7.636	10:05:53	10:07:00	0	+64	8°	96	Tmp	138	4.287	13:33:08	13:38:58	0	+347	17°
30	Tmp	34	7.922	10:06:44	10:07:44	0	+57	9°	97	Tmp	139	4.800	13:34:27	13:40:35	0	+365	17°
31	Tmp	34	8.287	10:07:35	10:08:23	0	+45	10°	98	Tmp	140	5.049	13:34:59	13:41:05	0	+363	17°
32	Tmp	35	8.585	10:08:28	10:09:16	0	+45	11°	99	Tmp	140	5.681	13:35:59	13:42:03	0	+361	17°
33	Tmp	37	0.636	10:10:07	10:11:02	0	+52	11°	109	Tmp	147	6.694	13:55:54	13:59:25	0	+208	17°
34	Tmp	38	0.889	10:10:47	10:11:39	0	+49	11°	110	Tmp	149	7.909	13:58:12	14:01:47	0	+212	17°
35	Tmp	39	1.158	10:11:27	10:12:36	0	+66	11°	Etapa B Num 118 Pen 0 PCZ 10 Total PP 8037 PG 4								
36	Tmp	40	1.534	10:12:23	10:13:28	0	+62	11°	Num 118 A 10° PG 11 B 17° PG 4 Tot PG 15 Col. 15°								
37	Tmp	42	2.455	10:14:52	10:15:20	0	+25	11°									
39	Tmp	45	3.565	10:17:22	10:17:36	0	+11	11°	Moto Clube / Princesa Off Road / Zaitec								
40	Tmp	47	4.255	10:18:44	10:19:06	0	+19	11°									
41	Tmp	48	4.584	10:19:40	10:19:46	0	+3	11°									
42	Tmp	48	4.963	10:20:13	10:20:13	0	+0	11°									
43	Tmp	49	5.640	10:21:13	10:21:12	0	-0	11°									
44	Tmp	49	6.166	10:22:12	10:22:16	0	+1	11°									
45	Tmp	50	7.232	10:24:23	10:24:25	0	+0	11°									
46	Tmp	53	0.780	10:29:42	10:29:44	0	+0	10°									
47	Tmp	57	1.919	10:32:25	10:33:31	0	+63	10°									
48	Tmp	58	2.575	10:35:12	10:35:28	0	+13	10°									
49	Tmp	59	3.616	10:37:55	10:38:12	0	+14	10°									
50	Tmp	62	3.582	10:49:40	10:49:41	0	+0	10°									
56	Tmp	66	0.593	11:01:06	11:02:27	0	+78	10°									
58	Tmp	72	4.209	11:09:45	11:10:08	0	+20	10°									
59	Tmp	75	7.180	11:14:24	11:14:30	0	+3	10°									
60	Tmp	79	3.530	11:19:57	11:19:56	0	-0	10°									
Etapa A Num 118 Pen 0 PCZ 20 Total PP 894 PG 11																	
63	Tmp	95	0.344	12:26:40	12:26:38	0	-0	4°									
64	Tmp	99	2.722	12:30:54	12:30:51	0	-0	1°									
65	Tmp	101	6.826	12:36:26	12:36:25	0	-0	1°									
66	Tmp	102	8.277	12:38:16	12:38:17	0	+0	1°									
67	Tmp	103	2.188	12:43:39	12:43:40	0	+0	1°									
68	Tmp	104	2.865	12:44:43	12:44:44	0	+0	1°									
69	Tmp	104	4.794	12:47:46	12:47:46	0	+0	1°									

N u m	129	Equipe	129 / Evanilton da Silva Reis / Vani						
		Patrocinador	Pitanga do Vale						
		Cat / NL / Largada	Junior / 34 / 09:05:00	Cidade	Camacari	Yamaha Wr-450f			

PC	Tp	Trc	KmPC	Ideal	Passagem	Pen	Pontos	Col	PC	Tp	Trc	KmPC	Ideal	Passagem	Pen	Pontos	Col
1	Tmp	3	0.536	09:10:49	09:10:52	0	+0	11°	70	Tmp	105	5.097	12:42:15	12:42:14	0	-0	14°
2	Tmp	4	0.627	09:10:58	09:11:01	0	+0	7°	71	Tmp	107	6.580	12:44:52	12:44:57	0	+2	14°
3	Tmp	4	0.980	09:11:35	09:12:00	0	+22	12°	72	Tmp	108	7.058	12:45:52	12:45:49	0	-0	13°
4	Tmp	4	1.073	09:11:45	09:12:23	0	+35	13°	73	Tmp	108	7.179	12:46:16	12:46:09	0	-12	14°
5	Tmp	6	2.182	09:13:49	09:14:21	0	+29	14°	74	Tmp	110	0.701	12:48:05	12:48:12	0	+4	13°
6	Tmp	7	5.177	09:18:09	09:18:12	0	+0	14°	75	Tmp	112	1.456	12:50:11	12:50:11	0	+0	13°
7	Tmp	8	7.550	09:21:32	09:21:29	0	-0	14°	76	Tmp	113	1.872	12:50:54	12:50:55	0	+0	11°
8	Tmp	8	8.149	09:22:33	09:22:32	0	-0	13°	77	Tmp	114	2.692	12:52:06	12:52:07	0	+0	9°
11	Tmp	8	8.740	09:23:34	09:23:34	0	+0	12°	78	Tmp	115	4.612	12:57:30	12:57:28	0	-0	9°
12	Tmp	11	1.502	09:27:25	09:27:31	0	+3	12°	79	Tmp	116	4.770	12:57:51	12:57:56	0	+2	7°
13	Tmp	11	1.831	09:28:03	09:28:17	0	+11	12°	80	Tmp	118	5.258	12:58:55	12:59:08	0	+10	8°
14	Tmp	14	3.051	09:29:54	09:29:57	0	+0	10°	81	Tmp	119	6.277	13:01:00	13:01:02	0	+0	8°
15	Tmp	14	4.313	09:31:37	09:31:37	0	+0	10°	82	Tmp	120	7.519	13:03:31	13:03:30	0	-0	8°
16	Tmp	15	5.222	09:33:03	09:33:08	0	+2	5°	83	Tmp	121	7.783	13:04:01	13:04:01	0	+0	8°
17	Tmp	17	5.785	09:34:01	09:34:06	0	+2	5°	84	Tmp	123	8.670	13:05:48	13:05:47	0	-0	8°
18	Tmp	17	6.991	09:35:47	09:35:49	0	+0	5°	85	Tmp	124	9.940	13:08:04	13:08:10	0	+3	7°
19	Tmp	20	1.561	09:38:28	09:38:22	0	-9	5°	86	Tmp	126	0.549	13:09:02	13:09:08	0	+3	7°
20	Tmp	21	2.057	09:39:19	09:39:18	0	-0	5°	87	Tmp	128	1.055	13:10:07	13:10:19	0	+9	7°
21	Tmp	22	2.695	09:40:32	09:40:32	0	+0	5°	88	Tmp	128	1.667	13:11:43	13:12:14	0	+28	9°
22	Tmp	23	3.296	09:42:00	09:42:22	0	+19	5°	89	Tmp	130	2.590	13:13:57	13:14:19	0	+19	11°
23	Tmp	25	1.880	09:49:12	09:49:13	0	+0	5°	90	Tmp	130	3.924	13:16:14	13:16:52	0	+35	15°
24	Tmp	26	2.876	09:50:53	09:50:56	0	+0	5°	91	Tmp	130	4.359	13:16:59	13:17:31	0	+29	15°
25	Tmp	28	3.796	09:52:35	09:52:39	0	+1	5°	92	Tmp	131	5.242	13:18:30	13:18:51	0	+18	16°
26	Tmp	28	5.411	09:55:21	09:55:27	0	+3	5°	93	Tmp	134	0.647	13:19:51	13:20:15	0	+21	16°
27	Tmp	31	6.298	09:57:02	09:57:15	0	+10	5°	94	Tmp	136	1.932	13:22:21	13:22:31	0	+7	16°
28	Tmp	32	7.502	09:59:34	09:59:44	0	+7	4°	95	Tmp	137	2.716	13:24:09	13:24:03	0	-9	16°
29	Tmp	33	7.636	09:59:53	10:00:09	0	+13	3°	96	Tmp	138	4.287	13:27:08	13:27:51	0	+40	16°
30	Tmp	34	7.922	10:00:44	10:00:55	0	+8	3°	97	Tmp	139	4.800	13:28:27	13:29:21	0	+51	16°
31	Tmp	34	8.287	10:01:35	10:01:37	0	+0	3°	98	Tmp	140	5.049	13:28:59	13:29:50	0	+48	15°
32	Tmp	35	8.585	10:02:28	10:02:27	0	-0	3°	99	Tmp	140	5.681	13:29:59	13:30:45	0	+43	15°
33	Tmp	37	0.636	10:04:07	10:04:16	0	+6	3°	109	Tmp	147	6.694	13:49:54	13:49:58	0	+1	14°
34	Tmp	38	0.889	10:04:47	10:04:55	0	+5	3°	110	Tmp	149	7.909	13:52:12	13:52:52	0	+37	15°
35	Tmp	39	1.158	10:05:27	10:05:52	0	+22	3°	Etapa B Num 129 Pen 0 PCZ 15 Total PP 447 PG 6								
36	Tmp	40	1.534	10:06:23	10:06:42	0	+16	3°	Num 129 A 9° PG 12 B 15° PG 6 Tot PG 18 Col. 13°								
37	Tmp	42	2.455	10:08:52	10:08:51	0	-0	3°									
39	Tmp	45	3.565	10:11:22	10:11:24	0	+0	3°	Moto Clube / Princesa Off Road / Zaitec								
40	Tmp	47	4.255	10:12:44	10:12:52	0	+5	3°									
41	Tmp	48	4.584	10:13:40	10:13:40	0	+0	3°									
42	Tmp	48	4.963	10:14:13	10:14:14	0	+0	3°									
43	Tmp	49	5.640	10:15:13	10:15:08	0	-6	3°									
44	Tmp	49	6.166	10:16:12	10:16:15	0	+0	3°									
45	Tmp	50	7.232	10:18:23	10:18:24	0	+0	3°									
46	Tmp	53	0.780	10:23:42	10:23:56	0	+11	2°									
47	Tmp	57	1.919	10:26:25	10:29:41	0	+193	5°									
48	Tmp	58	2.575	10:29:12	10:31:53	0	+158	6°									
49	Tmp	59	3.616	10:31:55	10:34:39	0	+161	8°									
50	Tmp	62	3.582	10:43:40	10:43:40	0	+0	8°									
56	Tmp	66	0.593	10:55:06	10:55:40	0	+31	9°									
58	Tmp	72	4.209	11:03:45	11:03:54	0	+6	9°									
59	Tmp	75	7.180	11:08:24	11:08:51	0	+24	9°									
60	Tmp	79	3.530	11:13:57	11:14:11	0	+11	9°									
Etapa A Num 129 Pen 0 PCZ 22 Total PP 829 PG 12																	
63	Tmp	95	0.344	12:20:40	12:20:44	0	+1	14°									
64	Tmp	99	2.722	12:24:54	12:25:12	0	+15	17°									
65	Tmp	101	6.826	12:30:26	12:30:24	0	-0	17°									
66	Tmp	102	8.277	12:32:16	12:32:19	0	+0	17°									
67	Tmp	103	2.188	12:37:39	12:37:39	0	+0	16°									
68	Tmp	104	2.865	12:38:43	12:38:42	0	-0	15°									
69	Tmp	104	4.794	12:41:46	12:41:46	0	+0	14°									

N u m	131	Equipe	131 / Edilton de Oliveira Teles / Muqueca						
		Patrocinador	Katinha Queiroz						
		Cat / NL / Largada	Junior / 42 / 09:09:00	Cidade	Sto Ant de Jesus	Honda Tornado			

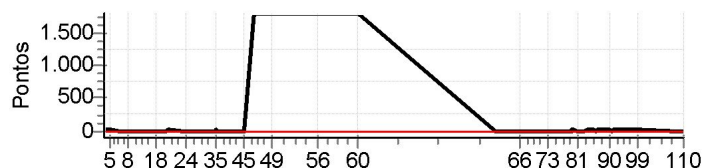
PC	Tp	Trc	KmPC	Ideal	Passagem	Pen	Pontos	Col	PC	Tp	Trc	KmPC	Ideal	Passagem	Pen	Pontos	Col
1	Tmp	3	0.536	09:14:49	09:14:53	0	+1	12°	70	Tmp	105	5.097	12:46:15	12:46:14	0	-0	4°
2	Tmp	4	0.627	09:14:58	09:15:02	0	+1	11°	71	Tmp	107	6.580	12:48:52	12:48:54	0	+0	4°
3	Tmp	4	0.980	09:15:35	09:15:51	0	+13	3°	72	Tmp	108	7.058	12:49:52	12:49:52	0	+0	3°
4	Tmp	4	1.073	09:15:45	09:16:03	0	+15	3°	73	Tmp	108	7.179	12:50:16	12:50:06	0	-21	11°
5	Tmp	6	2.182	09:17:49	09:17:52	0	+0	1°	74	Tmp	110	0.701	12:52:05	12:52:07	0	+0	10°
6	Tmp	7	5.177	09:22:09	09:22:12	0	+0	1°	75	Tmp	112	1.456	12:54:11	12:54:11	0	+0	9°
7	Tmp	8	7.550	09:25:32	09:25:29	0	-0	1°	76	Tmp	113	1.872	12:54:54	12:54:54	0	+0	8°
8	Tmp	8	8.149	09:26:33	09:26:32	0	-0	1°	77	Tmp	114	2.692	12:56:06	12:56:03	0	-0	8°
11	Tmp	8	8.740	09:27:34	09:27:33	0	-0	1°	78	Tmp	115	4.612	13:01:30	13:01:27	0	-0	5°
12	Tmp	11	1.502	09:31:25	09:31:23	0	-0	1°	79	Tmp	116	4.770	13:01:51	13:01:56	0	+2	5°
13	Tmp	11	1.831	09:32:03	09:32:09	0	+3	1°	80	Tmp	118	5.258	13:02:55	13:03:01	0	+3	4°
14	Tmp	14	3.051	09:33:54	09:34:00	0	+3	1°	81	Tmp	119	6.277	13:05:00	13:04:57	0	-0	4°
15	Tmp	14	4.313	09:35:37	09:35:41	0	+1	1°	82	Tmp	120	7.519	13:07:31	13:07:29	0	-0	4°
16	Tmp	15	5.222	09:37:03		0	+1800	13°	83	Tmp	121	7.783	13:08:01	13:07:59	0	-0	4°
17	Tmp	17	5.785	09:38:01	09:38:41	0	+37	13°	84	Tmp	123	8.670	13:09:48	13:09:47	0	-0	3°
18	Tmp	17	6.991	09:39:47	09:40:01	0	+11	13°	85	Tmp	124	9.940	13:12:04	13:12:02	0	-0	2°
19	Tmp	20	1.561	09:42:28	09:42:17	0	-24	13°	86	Tmp	126	0.549	13:13:02	13:13:00	0	-0	2°
20	Tmp	21	2.057	09:43:19	09:43:18	0	-0	13°	87	Tmp	128	1.055	13:14:07	13:14:11	0	+1	2°
21	Tmp	22	2.695	09:44:32	09:44:32	0	+0	13°	88	Tmp	128	1.667	13:15:43	13:15:52	0	+6	2°
22	Tmp	23	3.296	09:46:00	09:46:11	0	+8	13°	89	Tmp	130	2.590	13:17:57	13:17:54	0	-0	2°
23	Tmp	25	1.880	09:53:12	09:53:13	0	+0	13°	90	Tmp	130	3.924	13:20:14	13:20:11	0	-0	2°
24	Tmp	26	2.876	09:54:53	09:54:52	0	-0	13°	91	Tmp	130	4.359	13:20:59	13:20:58	0	-0	2°
25	Tmp	28	3.796	09:56:35	09:56:39	0	+1	13°	92	Tmp	131	5.242	13:22:30	13:22:29	0	-0	2°
26	Tmp	28	5.411	09:59:21	09:59:23	0	+0	13°	93	Tmp	134	0.647	13:23:51	13:23:52	0	+0	2°
27	Tmp	31	6.298	10:01:02	10:01:08	0	+3	13°	94	Tmp	136	1.932	13:26:21	13:26:18	0	-0	2°
28	Tmp	32	7.502	10:03:34	10:03:33	0	-0	13°	95	Tmp	137	2.716	13:28:09	13:28:08	0	-0	2°
29	Tmp	33	7.636	10:03:53	10:03:57	0	+1	13°	96	Tmp	138	4.287	13:31:08	13:31:16	0	+5	3°
30	Tmp	34	7.922	10:04:44	10:04:40	0	-3	13°	97	Tmp	139	4.800	13:32:27	13:32:34	0	+4	2°
31	Tmp	34	8.287	10:05:35	10:05:34	0	-0	13°	98	Tmp	140	5.049	13:32:59	13:33:00	0	+0	1°
32	Tmp	35	8.585	10:06:28	10:06:24	0	-3	13°	99	Tmp	140	5.681	13:33:59	13:34:00	0	+0	1°
33	Tmp	37	0.636	10:08:07	10:08:08	0	+0	13°	109	Tmp	147	6.694	13:53:54	13:53:50	0	-3	1°
34	Tmp	38	0.889	10:08:47	10:08:48	0	+0	13°	110	Tmp	149	7.909	13:56:12	13:56:09	0	-0	1°
35	Tmp	39	1.158	10:09:27	10:09:36	0	+6	13°	Etapa B Num 131 Pen 0 PCZ 30 Total PP 48 PG 25								
36	Tmp	40	1.534	10:10:23	10:10:26	0	+0	13°	Num 131 A 12° PG 9 B 1° PG 25 Tot PG 34 Col. 5°								
37	Tmp	42	2.455	10:12:52	10:12:47	0	-6	13°									
39	Tmp	45	3.565	10:15:22	10:15:23	0	+0	13°									
40	Tmp	47	4.255	10:16:44	10:16:49	0	+2	13°									
41	Tmp	48	4.584	10:17:40	10:17:36	0	-3	13°									
42	Tmp	48	4.963	10:18:13	10:18:15	0	+0	13°									
43	Tmp	49	5.640	10:19:13	10:19:11	0	-0	13°									
44	Tmp	49	6.166	10:20:12	10:20:13	0	+0	13°									
45	Tmp	50	7.232	10:22:23	10:22:22	0	-0	13°									
46	Tmp	53	0.780	10:27:42	10:27:49	0	+4	13°									
47	Tmp	57	1.919	10:30:25	10:31:35	0	+67	12°									
48	Tmp	58	2.575	10:33:12	10:33:19	0	+4	12°									
49	Tmp	59	3.616	10:35:55	10:35:56	0	+0	12°									
50	Tmp	62	3.582	10:47:40	10:47:42	0	+0	12°									
56	Tmp	66	0.593	10:59:06	10:59:04	0	-0	12°									
58	Tmp	72	4.209	11:07:45	11:07:42	0	-0	12°									
59	Tmp	75	7.180	11:12:24	11:12:23	0	-0	12°									
60	Tmp	79	3.530	11:17:57	11:17:58	0	+0	12°									
Etapa A Num 131 Pen 0 PCZ 27 Total PP 2020 PG 9																	
63	Tmp	95	0.344	12:24:40	12:24:36	0	-3	16°									
64	Tmp	99	2.722	12:28:54	12:28:52	0	-0	6°									
65	Tmp	101	6.826	12:34:26	12:34:25	0	-0	6°									
66	Tmp	102	8.277	12:36:16	12:36:17	0	+0	6°									
67	Tmp	103	2.188	12:41:39	12:41:38	0	-0	6°									
68	Tmp	104	2.865	12:42:43	12:42:41	0	-0	6°									
69	Tmp	104	4.794	12:45:46	12:45:44	0	-0	6°									



Moto Clube / Princesa Off Road / Zaitec		
.		

N u m	138	Equipe	138 / Bruno Leonardo Silva Lima / Maradona						
		Patrocinador	Codisauto Pecas Automotivas						
		Cat / NL / Largada	Junior / 44 / 09:10:00			Cidade	Feira de Santana		Honda Cr-30

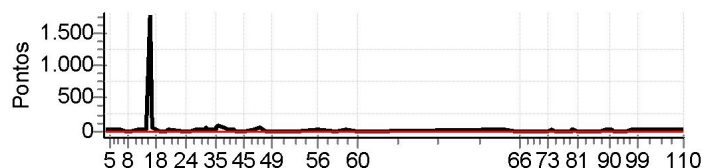
PC	Tp	Trc	KmPC	Ideal	Passagem	Pen	Pontos	Col	PC	Tp	Trc	KmPC	Ideal	Passagem	Pen	Pontos	Col
1	Tmp	3	0.536	09:15:49	09:15:52	0	+0	6°	70	Tmp	105	5.097	12:47:15	12:47:19	0	+1	5°
2	Tmp	4	0.627	09:15:58	09:16:01	0	+0	4°	71	Tmp	107	6.580	12:49:52	12:49:57	0	+2	6°
3	Tmp	4	0.980	09:16:35	09:16:49	0	+11	1°	72	Tmp	108	7.058	12:50:52	12:50:52	0	+0	6°
4	Tmp	4	1.073	09:16:45	09:16:56	0	+8	1°	73	Tmp	108	7.179	12:51:16	12:51:16	0	+0	3°
5	Tmp	6	2.182	09:18:49	09:19:25	0	+33	5°	74	Tmp	110	0.701	12:53:05	12:53:08	0	+0	2°
6	Tmp	7	5.177	09:23:09	09:23:13	0	+1	4°	75	Tmp	112	1.456	12:55:11	12:55:15	0	+1	2°
7	Tmp	8	7.550	09:26:32	09:26:29	0	-0	4°	76	Tmp	113	1.872	12:55:54	12:56:00	0	+3	2°
8	Tmp	8	8.149	09:27:33	09:27:31	0	-0	3°	77	Tmp	114	2.692	12:57:06	12:57:09	0	+0	2°
11	Tmp	8	8.740	09:28:34	09:28:36	0	+0	3°	78	Tmp	115	4.612	13:02:30	13:02:36	0	+3	2°
12	Tmp	11	1.502	09:32:25	09:32:26	0	+0	2°	79	Tmp	116	4.770	13:02:51	13:02:58	0	+4	3°
13	Tmp	11	1.831	09:33:03	09:33:06	0	+0	2°	80	Tmp	118	5.258	13:03:55	13:04:04	0	+6	3°
14	Tmp	14	3.051	09:34:54	09:35:00	0	+3	2°	81	Tmp	119	6.277	13:06:00	13:06:04	0	+1	3°
15	Tmp	14	4.313	09:36:37	09:36:40	0	+0	2°	82	Tmp	120	7.519	13:08:31	13:08:36	0	+2	3°
16	Tmp	15	5.222	09:38:03	09:38:09	0	+3	1°	83	Tmp	121	7.783	13:09:01	13:09:06	0	+2	3°
17	Tmp	17	5.785	09:39:01	09:39:06	0	+2	1°	84	Tmp	123	8.670	13:10:48	13:10:56	0	+5	4°
18	Tmp	17	6.991	09:40:47	09:40:50	0	+0	1°	85	Tmp	124	9.940	13:13:04	13:13:12	0	+5	3°
19	Tmp	20	1.561	09:43:28	09:43:21	0	-12	1°	86	Tmp	126	0.549	13:14:02	13:14:07	0	+2	5°
20	Tmp	21	2.057	09:44:19	09:44:21	0	+0	1°	87	Tmp	128	1.055	13:15:07	13:15:15	0	+5	4°
21	Tmp	22	2.695	09:45:32	09:45:35	0	+0	1°	88	Tmp	128	1.667	13:16:43	13:16:53	0	+7	6°
22	Tmp	23	3.296	09:47:00	09:47:10	0	+7	1°	89	Tmp	130	2.590	13:18:57	13:19:04	0	+4	6°
23	Tmp	25	1.880	09:54:12	09:54:13	0	+0	1°	90	Tmp	130	3.924	13:21:14	13:21:23	0	+6	6°
24	Tmp	26	2.876	09:55:53	09:55:52	0	-0	1°	91	Tmp	130	4.359	13:21:59	13:22:05	0	+3	6°
25	Tmp	28	3.796	09:57:35	09:57:36	0	+0	1°	92	Tmp	131	5.242	13:23:30	13:23:38	0	+5	6°
26	Tmp	28	5.411	10:00:21	10:00:23	0	+0	1°	93	Tmp	134	0.647	13:24:51	13:25:00	0	+6	6°
27	Tmp	31	6.298	10:02:02	10:02:02	0	+0	1°	94	Tmp	136	1.932	13:27:21	13:27:29	0	+5	6°
28	Tmp	32	7.502	10:04:34	10:04:34	0	+0	1°	95	Tmp	137	2.716	13:29:09	13:29:19	0	+7	6°
29	Tmp	33	7.636	10:04:53	10:04:58	0	+2	1°	96	Tmp	138	4.287	13:32:08	13:32:41	0	+30	8°
30	Tmp	34	7.922	10:05:44	10:05:43	0	-0	1°	97	Tmp	139	4.800	13:33:27	13:33:52	0	+22	9°
31	Tmp	34	8.287	10:06:35	10:06:34	0	-0	1°	98	Tmp	140	5.049	13:33:59	13:34:19	0	+17	9°
32	Tmp	35	8.585	10:07:28	10:07:27	0	-0	1°	99	Tmp	140	5.681	13:34:59	13:35:10	0	+8	9°
33	Tmp	37	0.636	10:09:07	10:09:09	0	+0	1°	109	Tmp	147	6.694	13:54:54	13:54:55	0	+0	9°
34	Tmp	38	0.889	10:09:47	10:09:48	0	+0	1°	110	Tmp	149	7.909	13:57:12	13:57:12	0	+0	8°
35	Tmp	39	1.158	10:10:27	10:10:34	0	+4	1°	Etapa B Num 138 Pen 0 PCZ 11 Total PP 164 PG 13								
36	Tmp	40	1.534	10:11:23	10:11:23	0	+0	1°	Num 138 A 17° PG 4 B 8° PG 13 Tot PG 17 Col. 14°								
37	Tmp	42	2.455	10:13:52	10:13:51	0	-0	1°									
39	Tmp	45	3.565	10:16:22	10:16:24	0	+0	1°									
40	Tmp	47	4.255	10:17:44	10:17:49	0	+2	1°									
41	Tmp	48	4.584	10:18:40	10:18:43	0	+0	1°									
42	Tmp	48	4.963	10:19:13	10:19:17	0	+1	1°									
43	Tmp	49	5.640	10:20:13	10:20:16	0	+0	1°									
44	Tmp	49	6.166	10:21:12	10:21:16	0	+1	1°									
45	Tmp	50	7.232	10:23:23	10:23:29	0	+3	1°									
46	Tmp	53	0.780	10:28:42		0	+1800	12°									
47	Tmp	57	1.919	10:31:25		0	+1800	16°									
48	Tmp	58	2.575	10:34:12		0	+1800	16°									
49	Tmp	59	3.616	10:36:55	11:28:57	0	+1800	16°									
50	Tmp	62	3.582	10:48:40		0	+1800	16°									
56	Tmp	66	0.593	11:00:06		0	+1800	16°									
58	Tmp	72	4.209	11:08:45		0	+1800	17°									
59	Tmp	75	7.180	11:13:24		0	+1800	17°									
60	Tmp	79	3.530	11:18:57		0	+1800	17°									
Etapa A Num 138 Pen 0 PCZ 27 Total PP 16293 PG 4																	
63	Tmp	95	0.344	12:25:40	12:25:42	0	+0	5°									
64	Tmp	99	2.722	12:29:54	12:29:57	0	+0	2°									
65	Tmp	101	6.826	12:35:26	12:35:28	0	+0	2°									
66	Tmp	102	8.277	12:37:16	12:37:20	0	+1	4°									
67	Tmp	103	2.188	12:42:39	12:42:43	0	+1	5°									
68	Tmp	104	2.865	12:43:43	12:43:46	0	+0	5°									
69	Tmp	104	4.794	12:46:46	12:46:48	0	+0	5°									



Moto Clube / Princesa Off Road / Zaitec

N u m	169	Equipe	169 / Alexandre Marinho Varanda / Xandy						
		Patrocinador	Grupo Itadil, Eiffel						
		Cat / NL / Largada	Junior / 37 / 09:06:30	Cidade	Itabuna	Honda Crf-230			

PC	Tp	Trc	KmPC	Ideal	Passagem	Pen	Pontos	Col	PC	Tp	Trc	KmPC	Ideal	Passagem	Pen	Pontos	Col
1	Tmp	3	0.536	09:12:19	09:12:23	0	+1	13°	70	Tmp	105	5.097	12:43:45	12:43:46	0	+0	11°
2	Tmp	4	0.627	09:12:28	09:12:31	0	+0	8°	71	Tmp	107	6.580	12:46:22	12:46:24	0	+0	9°
3	Tmp	4	0.980	09:13:05	09:13:27	0	+19	11°	72	Tmp	108	7.058	12:47:22	12:47:20	0	-0	9°
4	Tmp	4	1.073	09:13:15	09:13:42	0	+24	11°	73	Tmp	108	7.179	12:47:46	12:47:38	0	-15	13°
5	Tmp	6	2.182	09:15:19	09:15:40	0	+18	9°	74	Tmp	110	0.701	12:49:35	12:49:53	0	+15	16°
6	Tmp	7	5.177	09:19:39	09:19:46	0	+4	8°	75	Tmp	112	1.456	12:51:41	12:51:43	0	+0	16°
7	Tmp	8	7.550	09:23:02	09:22:58	0	-3	8°	76	Tmp	113	1.872	12:52:24	12:52:25	0	+0	16°
8	Tmp	8	8.149	09:24:03	09:23:59	0	-3	8°	77	Tmp	114	2.692	12:53:36	12:53:34	0	-0	13°
11	Tmp	8	8.740	09:25:04	09:25:06	0	+0	8°	78	Tmp	115	4.612	12:59:00	12:58:55	0	-6	12°
12	Tmp	11	1.502	09:28:55	09:29:04	0	+6	8°	79	Tmp	116	4.770	12:59:21	12:59:28	0	+4	10°
13	Tmp	11	1.831	09:29:33	09:29:47	0	+11	10°	80	Tmp	118	5.258	13:00:25	13:00:43	0	+15	12°
14	Tmp	14	3.051	09:31:24	09:31:39	0	+12	11°	81	Tmp	119	6.277	13:02:30	13:02:30	0	+0	9°
15	Tmp	14	4.313	09:33:07	09:33:12	0	+2	11°	82	Tmp	120	7.519	13:05:01	13:04:59	0	-0	9°
16	Tmp	15	5.222	09:34:33		0	+1800	16°	83	Tmp	121	7.783	13:05:31	13:05:31	0	+0	9°
17	Tmp	17	5.785	09:35:31	09:36:14	0	+40	14°	84	Tmp	123	8.670	13:07:18	13:07:21	0	+0	9°
18	Tmp	17	6.991	09:37:17	09:37:40	0	+20	14°	85	Tmp	124	9.940	13:09:34	13:09:37	0	+0	9°
19	Tmp	20	1.561	09:39:58	09:39:55	0	-0	14°	86	Tmp	126	0.549	13:10:32	13:10:32	0	+0	8°
20	Tmp	21	2.057	09:40:49	09:40:50	0	+0	14°	87	Tmp	128	1.055	13:11:37	13:11:40	0	+0	8°
21	Tmp	22	2.695	09:42:02	09:42:05	0	+0	14°	88	Tmp	128	1.667	13:13:13	13:13:15	0	+0	7°
22	Tmp	23	3.296	09:43:30	09:43:43	0	+10	14°	89	Tmp	130	2.590	13:15:27	13:15:31	0	+1	7°
23	Tmp	25	1.880	09:50:42	09:50:45	0	+0	14°	90	Tmp	130	3.924	13:17:44	13:18:00	0	+13	7°
24	Tmp	26	2.876	09:52:23	09:52:24	0	+0	14°	91	Tmp	130	4.359	13:18:29	13:18:41	0	+9	7°
25	Tmp	28	3.796	09:54:05	09:54:08	0	+0	14°	92	Tmp	131	5.242	13:20:00	13:20:02	0	+0	7°
26	Tmp	28	5.411	09:56:51	09:56:56	0	+2	14°	93	Tmp	134	0.647	13:21:21	13:21:24	0	+0	7°
27	Tmp	31	6.298	09:58:32	09:58:40	0	+5	14°	94	Tmp	136	1.932	13:23:51	13:23:47	0	-3	7°
28	Tmp	32	7.502	10:01:04	10:01:15	0	+8	14°	95	Tmp	137	2.716	13:25:39	13:25:39	0	+0	7°
29	Tmp	33	7.636	10:01:23	10:01:42	0	+16	14°	96	Tmp	138	4.287	13:28:38	13:28:53	0	+12	5°
30	Tmp	34	7.922	10:02:14	10:02:54	0	+37	14°	97	Tmp	139	4.800	13:29:57	13:30:17	0	+17	6°
31	Tmp	34	8.287	10:03:05	10:03:33	0	+25	15°	98	Tmp	140	5.049	13:30:29	13:30:45	0	+13	6°
32	Tmp	35	8.585	10:03:58	10:04:22	0	+21	15°	99	Tmp	140	5.681	13:31:29	13:31:40	0	+8	7°
33	Tmp	37	0.636	10:05:37	10:06:04	0	+24	15°	109	Tmp	147	6.694	13:51:24	13:51:28	0	+1	7°
34	Tmp	38	0.889	10:06:17	10:06:42	0	+22	15°	110	Tmp	149	7.909	13:53:42	13:53:48	0	+3	5°
35	Tmp	39	1.158	10:06:57	10:07:38	0	+38	15°	Etapa B Num 169 Pen 0 PCZ 22 Total PP 146 PG 16								
36	Tmp	40	1.534	10:07:53	10:09:04	0	+68	15°	Num 169 A 14° PG 7 B 5° PG 16 Tot PG 23 Col. 10°								
37	Tmp	42	2.455	10:10:22	10:11:02	0	+37	15°									
39	Tmp	45	3.565	10:12:52	10:13:17	0	+22	15°									
40	Tmp	47	4.255	10:14:14	10:14:46	0	+29	15°									
41	Tmp	48	4.584	10:15:10	10:15:25	0	+12	15°									
42	Tmp	48	4.963	10:15:43	10:15:50	0	+4	15°									
43	Tmp	49	5.640	10:16:43	10:16:46	0	+0	15°									
44	Tmp	49	6.166	10:17:42	10:17:45	0	+0	15°									
45	Tmp	50	7.232	10:19:53	10:19:54	0	+0	15°									
46	Tmp	53	0.780	10:25:12	10:25:21	0	+6	15°									
47	Tmp	57	1.919	10:27:55	10:28:39	0	+41	14°									
48	Tmp	58	2.575	10:30:42	10:30:36	0	-9	14°									
49	Tmp	59	3.616	10:33:25	10:33:23	0	-0	14°									
50	Tmp	62	3.582	10:45:10	10:45:11	0	+0	14°									
56	Tmp	66	0.593	10:56:36	10:56:58	0	+19	14°									
58	Tmp	72	4.209	11:05:15	11:05:14	0	-0	14°									
59	Tmp	75	7.180	11:09:54	11:10:09	0	+12	14°									
60	Tmp	79	3.530	11:15:27	11:15:28	0	+0	14°									
Etapa A Num 169 Pen 0 PCZ 15 Total PP 2430 PG 7																	
63	Tmp	95	0.344	12:22:10	12:22:14	0	+1	13°									
64	Tmp	99	2.722	12:26:24	12:26:37	0	+10	12°									
65	Tmp	101	6.826	12:31:56	12:31:56	0	+0	11°									
66	Tmp	102	8.277	12:33:46	12:33:47	0	+0	11°									
67	Tmp	103	2.188	12:39:09	12:39:09	0	+0	11°									
68	Tmp	104	2.865	12:40:13	12:40:13	0	+0	11°									
69	Tmp	104	4.794	12:43:16	12:43:17	0	+0	11°									



Moto Clube / Princesa Off Road / Zaitec		
.		

N u m	170	Equipe	170 / Gildasio M. Queiroz Filho / Fosco						
		Patrocinador	Ggs Seguros						
		Cat / NL / Largada	Junior / 36 / 09:06:00	Cidade	Feira de Santana	Honda Crf-230			

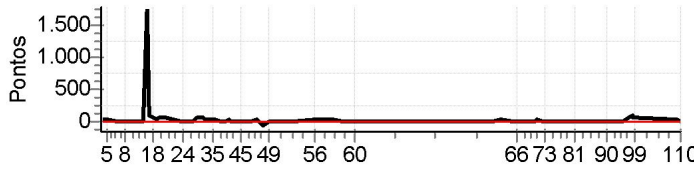
PC	Tp	Trc	KmPC	Ideal	Passagem	Pen	Pontos	Col	PC	Tp	Trc	KmPC	Ideal	Passagem	Pen	Pontos	Col					
1	Tmp	3	0.536	09:11:49	09:11:50	0	+0	10°	70	Tmp	105	5.097	12:43:15	12:43:11	0	-3	9°					
2	Tmp	4	0.627	09:11:58	09:11:59	0	+0	6°	71	Tmp	107	6.580	12:45:52	12:45:54	0	+0	8°					
3	Tmp	4	0.980	09:12:35	09:12:57	0	+19	8°	72	Tmp	108	7.058	12:46:52	12:46:49	0	-0	7°					
4	Tmp	4	1.073	09:12:45	09:13:04	0	+16	4°	73	Tmp	108	7.179	12:47:16	12:47:13	0	-0	4°					
5	Tmp	6	2.182	09:14:49	09:15:11	0	+19	6°	74	Tmp	110	0.701	12:49:05	12:49:09	0	+1	4°					
6	Tmp	7	5.177	09:19:09	09:19:14	0	+2	6°	75	Tmp	112	1.456	12:51:11	12:51:07	0	-3	4°					
7	Tmp	8	7.550	09:22:32	09:22:25	0	-12	7°	76	Tmp	113	1.872	12:51:54	12:51:49	0	-6	7°					
8	Tmp	8	8.149	09:23:33	09:23:33	0	+0	7°	77	Tmp	114	2.692	12:53:06	12:53:05	0	-0	7°					
11	Tmp	8	8.740	09:24:34	09:24:37	0	+0	6°	78	Tmp	115	4.612	12:58:30	12:58:44	0	+11	8°					
12	Tmp	11	1.502	09:28:25	09:28:27	0	+0	6°	79	Tmp	116	4.770	12:58:51	12:59:22	0	+28	12°					
13	Tmp	11	1.831	09:29:03	09:29:13	0	+7	6°	80	Tmp	118	5.258	12:59:55	13:00:38	0	+40	15°					
14	Tmp	14	3.051	09:30:54	09:31:00	0	+3	7°	81	Tmp	119	6.277	13:02:00	13:02:25	0	+22	15°					
15	Tmp	14	4.313	09:32:37	09:32:39	0	+0	7°	82	Tmp	120	7.519	13:04:31	13:04:27	0	-3	15°					
16	Tmp	15	5.222	09:34:03		0	+1800	15°	83	Tmp	121	7.783	13:05:01	13:04:52	0	-18	16°					
17	Tmp	17	5.785	09:35:01	09:36:19	0	+75	16°	84	Tmp	123	8.670	13:06:48	13:06:51	0	+0	15°					
18	Tmp	17	6.991	09:36:47	09:37:42	0	+52	16°	85	Tmp	124	9.940	13:09:04	13:09:04	0	+0	15°					
19	Tmp	20	1.561	09:39:28	09:39:38	0	+7	15°	86	Tmp	126	0.549	13:10:02	13:10:00	0	-0	15°					
20	Tmp	21	2.057	09:40:19	09:40:27	0	+5	15°	87	Tmp	128	1.055	13:11:07	13:11:16	0	+6	16°					
21	Tmp	22	2.695	09:41:32	09:41:37	0	+2	15°	88	Tmp	128	1.667	13:12:43	13:12:53	0	+7	16°					
22	Tmp	23	3.296	09:43:00	09:43:16	0	+13	15°	89	Tmp	130	2.590	13:14:57	13:15:02	0	+2	16°					
23	Tmp	25	1.880	09:50:12	09:50:14	0	+0	15°	90	Tmp	130	3.924	13:17:14	13:17:32	0	+15	16°					
24	Tmp	26	2.876	09:51:53	09:51:58	0	+2	15°	91	Tmp	130	4.359	13:17:59	13:18:08	0	+6	16°					
25	Tmp	28	3.796	09:53:35	09:53:39	0	+1	15°	92	Tmp	131	5.242	13:19:30	13:19:28	0	-0	15°					
26	Tmp	28	5.411	09:56:21	09:56:25	0	+1	15°	93	Tmp	134	0.647	13:20:51	13:21:13	0	+19	15°					
27	Tmp	31	6.298	09:58:02	09:58:04	0	+0	15°	94	Tmp	136	1.932	13:23:21	13:23:19	0	-0	15°					
28	Tmp	32	7.502	10:00:34	10:00:29	0	-6	15°	95	Tmp	137	2.716	13:25:09	13:25:07	0	-0	15°					
29	Tmp	33	7.636	10:00:53	10:00:53	0	+0	15°	96	Tmp	138	4.287	13:28:08	13:29:02	0	+51	15°					
30	Tmp	34	7.922	10:01:44	10:01:44	0	+0	15°	97	Tmp	139	4.800	13:29:27	13:30:41	0	+71	15°					
31	Tmp	34	8.287	10:02:35	10:02:32	0	-0	14°	98	Tmp	140	5.049	13:29:59	13:31:08	0	+66	16°					
32	Tmp	35	8.585	10:03:28	10:03:26	0	-0	14°	99	Tmp	140	5.681	13:30:59	13:31:58	0	+56	16°					
33	Tmp	37	0.636	10:05:07	10:05:10	0	+0	14°	109	Tmp	147	6.694	13:50:54	13:51:08	0	+11	16°					
34	Tmp	38	0.889	10:05:47	10:05:52	0	+2	14°	110	Tmp	149	7.909	13:53:12	13:53:38	0	+23	16°					
35	Tmp	39	1.158	10:06:27	10:06:49	0	+19	14°	Etapa B													
36	Tmp	40	1.534	10:07:23	10:07:38	0	+12	14°	Num	170	Pen	0	PCZ	16	Total PP	474	PG	5				
37	Tmp	42	2.455	10:09:52	10:09:41	0	-24	14°	Num	170	A	13°	PG	8	B	16°	PG	5	Tot PG	13	Col.	16°
39	Tmp	45	3.565	10:12:22	10:12:52	0	+27	14°														
40	Tmp	47	4.255	10:13:44	10:14:20	0	+33	14°	Moto Clube / Princesa Off Road / Zaitec													
41	Tmp	48	4.584	10:14:40	10:15:02	0	+19	14°														
42	Tmp	48	4.963	10:15:13	10:15:28	0	+12	14°														
43	Tmp	49	5.640	10:16:13	10:16:10	0	-0	14°														
44	Tmp	49	6.166	10:17:12	10:17:11	0	-0	14°														
45	Tmp	50	7.232	10:19:23	10:19:26	0	+0	14°														
46	Tmp	53	0.780	10:24:42	10:24:41	0	-0	14°														
47	Tmp	57	1.919	10:27:25	10:27:52	0	+24	13°														
48	Tmp	58	2.575	10:30:12	10:29:57	0	-36	13°														
49	Tmp	59	3.616	10:32:55	10:32:52	0	-0	13°														
50	Tmp	62	3.582	10:44:40	10:44:39	0	-0	13°														
56	Tmp	66	0.593	10:56:06	10:56:18	0	+9	13°														
58	Tmp	72	4.209	11:04:45	11:04:39	0	-9	13°														
59	Tmp	75	7.180	11:09:24	11:09:40	0	+13	13°														
60	Tmp	79	3.530	11:14:57	11:15:06	0	+6	13°														
Etapa A																						
Num	170	Pen	0	PCZ	19	Total PP	2287	PG	8													
63	Tmp	95	0.344	12:21:40	12:21:37	0	-0	10°														
64	Tmp	99	2.722	12:25:54	12:26:03	0	+6	8°														
65	Tmp	101	6.826	12:31:26	12:31:27	0	+0	8°														
66	Tmp	102	8.277	12:33:16	12:33:16	0	+0	8°														
67	Tmp	103	2.188	12:38:39	12:38:42	0	+0	8°														
68	Tmp	104	2.865	12:39:43	12:39:43	0	+0	8°														
69	Tmp	104	4.794	12:42:46	12:42:45	0	-0	7°														

N u m	199	Equipe	199 / Jose Marcos Ribeiro Costa / Pitinho						
		Patrocinador	Realeza Motos Concessionária Honda						
		Cat / NL / Largada	Junior / 48 / 09:12:00			Cidade	Itapetinga		Yamaha Wr-250

PC	Tp	Trc	KmPC	Ideal	Passagem	Pen	Pontos	Col	PC	Tp	Trc	KmPC	Ideal	Passagem	Pen	Pontos	Col
1	Tmp	3	0.536	09:17:49	09:17:52	0	+0	2°	70	Tmp	105	5.097	12:49:15	12:49:14	0	-0	7°
2	Tmp	4	0.627	09:17:58	09:18:02	0	+1	9°	71	Tmp	107	6.580	12:51:52	12:51:51	0	-0	7°
3	Tmp	4	0.980	09:18:35	09:18:56	0	+18	9°	72	Tmp	108	7.058	12:52:52	12:52:48	0	-3	8°
4	Tmp	4	1.073	09:18:45	09:19:04	0	+16	6°	73	Tmp	108	7.179	12:53:16	12:53:11	0	-6	7°
5	Tmp	6	2.182	09:20:49	09:21:11	0	+19	7°	74	Tmp	110	0.701	12:55:05	12:55:04	0	-0	6°
6	Tmp	7	5.177	09:25:09	09:25:09	0	+0	5°	75	Tmp	112	1.456	12:57:11	12:57:09	0	-0	5°
7	Tmp	8	7.550	09:28:32	09:28:27	0	-6	5°	76	Tmp	113	1.872	12:57:54	12:57:53	0	-0	3°
8	Tmp	8	8.149	09:29:33	09:29:29	0	-3	6°	77	Tmp	114	2.692	12:59:06	12:59:04	0	-0	3°
11	Tmp	8	8.740	09:30:34	09:30:31	0	-0	5°	78	Tmp	115	4.612	13:04:30	13:04:33	0	+0	3°
12	Tmp	11	1.502	09:34:25	09:34:22	0	-0	5°	79	Tmp	116	4.770	13:04:51	13:04:55	0	+1	2°
13	Tmp	11	1.831	09:35:03	09:35:04	0	+0	3°	80	Tmp	118	5.258	13:05:55	13:06:01	0	+3	2°
14	Tmp	14	3.051	09:36:54	09:36:55	0	+0	3°	81	Tmp	119	6.277	13:08:00	13:07:56	0	-3	2°
15	Tmp	14	4.313	09:38:37	09:38:37	0	+0	3°	82	Tmp	120	7.519	13:10:31	13:10:27	0	-3	2°
16	Tmp	15	5.222	09:40:03	09:40:04	0	+0	2°	83	Tmp	121	7.783	13:11:01	13:11:00	0	-0	2°
17	Tmp	17	5.785	09:41:01	09:41:03	0	+0	2°	84	Tmp	123	8.670	13:12:48	13:12:45	0	-0	2°
18	Tmp	17	6.991	09:42:47	09:42:44	0	-0	2°	85	Tmp	124	9.940	13:15:04	13:15:33	0	+26	8°
19	Tmp	20	1.561	09:45:28	09:45:19	0	-18	2°	86	Tmp	126	0.549	13:16:02	13:16:25	0	+20	10°
20	Tmp	21	2.057	09:46:19	09:46:17	0	-0	2°	87	Tmp	128	1.055	13:17:07	13:17:19	0	+9	10°
21	Tmp	22	2.695	09:47:32	09:47:31	0	-0	2°	88	Tmp	128	1.667	13:18:43	13:18:41	0	-0	8°
22	Tmp	23	3.296	09:49:00	09:49:13	0	+10	2°	89	Tmp	130	2.590	13:20:57	13:21:01	0	+1	8°
23	Tmp	25	1.880	09:56:12	09:56:12	0	+0	2°	90	Tmp	130	3.924	13:23:14	13:23:27	0	+10	8°
24	Tmp	26	2.876	09:57:53	09:57:49	0	-3	2°	91	Tmp	130	4.359	13:23:59	13:24:02	0	+0	8°
25	Tmp	28	3.796	09:59:35	09:59:35	0	+0	2°	92	Tmp	131	5.242	13:25:30	13:25:28	0	-0	8°
26	Tmp	28	5.411	10:02:21	10:02:23	0	+0	2°	93	Tmp	134	0.647	13:26:51	13:26:55	0	+1	8°
27	Tmp	31	6.298	10:04:02	10:04:17	0	+12	2°	94	Tmp	136	1.932	13:29:21	13:29:15	0	-9	8°
28	Tmp	32	7.502	10:06:34	10:06:41	0	+4	2°	95	Tmp	137	2.716	13:31:09	13:31:06	0	-0	8°
29	Tmp	33	7.636	10:06:53	10:07:04	0	+8	2°	96	Tmp	138	4.287	13:34:08	13:34:27	0	+16	7°
30	Tmp	34	7.922	10:07:44	10:07:46	0	+0	2°	97	Tmp	139	4.800	13:35:27	13:35:48	0	+18	7°
31	Tmp	34	8.287	10:08:35	10:08:30	0	-6	2°	98	Tmp	140	5.049	13:35:59	13:36:16	0	+14	8°
32	Tmp	35	8.585	10:09:28	10:09:21	0	-12	2°	99	Tmp	140	5.681	13:36:59	13:37:11	0	+9	8°
33	Tmp	37	0.636	10:11:07	10:11:06	0	-0	2°	109	Tmp	147	6.694	13:56:54	13:56:53	0	-0	8°
34	Tmp	38	0.889	10:11:47	10:11:48	0	+0	2°	110	Tmp	149	7.909	13:59:12	13:59:09	0	-0	7°
35	Tmp	39	1.158	10:12:27	10:12:44	0	+14	2°	Etapa B Num 199 Pen 0 PCZ 20 Total PP 158 PG 14								
36	Tmp	40	1.534	10:13:23	10:13:31	0	+5	2°	Num 199 A 1° PG 25 B 7° PG 14 Tot PG 39 Col. 2°								
37	Tmp	42	2.455	10:15:52	10:15:45	0	-12	2°									
39	Tmp	45	3.565	10:18:22	10:18:30	0	+5	2°	Moto Clube / Princesa Off Road / Zaitec								
40	Tmp	47	4.255	10:19:44	10:19:53	0	+6	2°									
41	Tmp	48	4.584	10:20:40	10:20:35	0	-6	2°									
42	Tmp	48	4.963	10:21:13	10:21:12	0	-0	2°									
43	Tmp	49	5.640	10:22:13	10:22:12	0	-0	2°									
44	Tmp	49	6.166	10:23:12	10:23:10	0	-0	2°									
45	Tmp	50	7.232	10:25:23	10:25:22	0	-0	2°									
46	Tmp	53	0.780	10:30:42	10:30:43	0	+0	1°									
47	Tmp	57	1.919	10:33:25	10:33:37	0	+9	1°									
48	Tmp	58	2.575	10:36:12	10:36:06	0	-9	1°									
49	Tmp	59	3.616	10:38:55	10:38:50	0	-6	1°									
50	Tmp	62	3.582	10:50:40	10:50:39	0	-0	1°									
56	Tmp	66	0.593	11:02:06	11:02:10	0	+1	1°									
58	Tmp	72	4.209	11:10:45	11:10:42	0	-0	1°									
59	Tmp	75	7.180	11:15:24	11:15:26	0	+0	1°									
60	Tmp	79	3.530	11:20:57	11:20:54	0	-0	1°									

Etapa A	Num	199	Pen	0	PCZ	27	Total PP	209	PG	25
63	Tmp	95	0.344	12:27:40	12:27:41	0	+0	2°		
64	Tmp	99	2.722	12:31:54	12:31:50	0	-3	7°		
65	Tmp	101	6.826	12:37:26	12:37:24	0	-0	7°		
66	Tmp	102	8.277	12:39:16	12:39:16	0	+0	7°		
67	Tmp	103	2.188	12:44:39	12:44:38	0	-0	7°		
68	Tmp	104	2.865	12:45:43	12:45:40	0	-0	7°		
69	Tmp	104	4.794	12:48:46	12:48:42	0	-3	8°		

N u m	216	Equipe	216 / Igor Edric Vilas Boas Pereira / Igora						
		Patrocinador	Pj Locações						
		Cat / NL / Largada	Junior / 41 / 09:08:30	Cidade	Jacobina	Honda Crf-230			

PC	Tp	Trc	KmPC	Ideal	Passagem	Pen	Pontos	Col	PC	Tp	Trc	KmPC	Ideal	Passagem	Pen	Pontos	Col
1	Tmp	3	0.536	09:14:19	09:14:24	0	+2	14°	70	Tmp	105	5.097	12:45:45	12:45:50	0	+2	6°
2	Tmp	4	0.627	09:14:28	09:14:34	0	+3	13°	71	Tmp	107	6.580	12:48:22	12:48:23	0	+0	5°
3	Tmp	4	0.980	09:15:05	09:15:25	0	+17	13°	72	Tmp	108	7.058	12:49:22	12:49:22	0	+0	5°
4	Tmp	4	1.073	09:15:15	09:15:36	0	+18	8°	73	Tmp	108	7.179	12:49:46	12:49:40	0	-9	5°
5	Tmp	6	2.182	09:17:19	09:17:28	0	+6	3°	74	Tmp	110	0.701	12:51:35	12:51:35	0	+0	5°
6	Tmp	7	5.177	09:21:39	09:21:41	0	+0	2°	75	Tmp	112	1.456	12:53:41	12:53:38	0	-0	3°
7	Tmp	8	7.550	09:25:02	09:25:00	0	-0	2°	76	Tmp	113	1.872	12:54:24	12:54:13	0	-24	12°
8	Tmp	8	8.149	09:26:03	09:25:56	0	-12	4°	77	Tmp	114	2.692	12:55:36	12:55:28	0	-15	16°
11	Tmp	8	8.740	09:27:04	09:26:57	0	-12	7°	78	Tmp	115	4.612	13:01:00	13:00:53	0	-12	15°
12	Tmp	11	1.502	09:30:55	09:30:50	0	-6	7°	79	Tmp	116	4.770	13:01:21	13:01:18	0	-0	14°
13	Tmp	11	1.831	09:31:33	09:31:32	0	-0	7°	80	Tmp	118	5.258	13:02:25	13:02:27	0	+0	10°
14	Tmp	14	3.051	09:33:24	09:33:24	0	+0	6°	81	Tmp	119	6.277	13:04:30	13:04:22	0	-15	12°
15	Tmp	14	4.313	09:35:07	09:35:05	0	-0	5°	82	Tmp	120	7.519	13:07:01	13:06:53	0	-15	13°
16	Tmp	15	5.222	09:36:33		0	+1800	14°	83	Tmp	121	7.783	13:07:31	13:07:24	0	-12	13°
17	Tmp	17	5.785	09:37:31	09:38:44	0	+70	15°	84	Tmp	123	8.670	13:09:18	13:09:16	0	-0	13°
18	Tmp	17	6.991	09:39:17	09:40:09	0	+49	15°	85	Tmp	124	9.940	13:11:34	13:11:32	0	-0	13°
19	Tmp	20	1.561	09:41:58	09:42:25	0	+24	16°	86	Tmp	126	0.549	13:12:32	13:12:26	0	-9	14°
20	Tmp	21	2.057	09:42:49	09:43:26	0	+34	16°	87	Tmp	128	1.055	13:13:37	13:13:34	0	-0	13°
21	Tmp	22	2.695	09:44:02	09:44:49	0	+44	16°	88	Tmp	128	1.667	13:15:13	13:15:10	0	-0	13°
22	Tmp	23	3.296	09:45:30	09:46:18	0	+45	16°	89	Tmp	130	2.590	13:17:27	13:17:23	0	-3	13°
23	Tmp	25	1.880	09:52:42	09:52:39	0	-0	16°	90	Tmp	130	3.924	13:19:44	13:19:35	0	-18	12°
24	Tmp	26	2.876	09:54:23	09:54:16	0	-12	16°	91	Tmp	130	4.359	13:20:29	13:20:24	0	-6	12°
25	Tmp	28	3.796	09:56:05	09:56:02	0	-0	16°	92	Tmp	131	5.242	13:22:00	13:21:55	0	-6	13°
26	Tmp	28	5.411	09:58:51	09:58:48	0	-0	16°	93	Tmp	134	0.647	13:23:21	13:23:22	0	+0	13°
27	Tmp	31	6.298	10:00:32	10:01:09	0	+34	16°	94	Tmp	136	1.932	13:25:51	13:25:48	0	-0	13°
28	Tmp	32	7.502	10:03:04	10:03:56	0	+49	16°	95	Tmp	137	2.716	13:27:39	13:27:32	0	-12	13°
29	Tmp	33	7.636	10:03:23	10:04:17	0	+51	16°	96	Tmp	138	4.287	13:30:38	13:31:43	0	+62	14°
30	Tmp	34	7.922	10:04:14	10:04:56	0	+39	16°	97	Tmp	139	4.800	13:31:57	13:33:06	0	+66	14°
31	Tmp	34	8.287	10:05:05	10:05:32	0	+24	16°	98	Tmp	140	5.049	13:32:29	13:33:35	0	+63	14°
32	Tmp	35	8.585	10:05:58	10:06:26	0	+25	16°	99	Tmp	140	5.681	13:33:29	13:34:26	0	+54	14°
33	Tmp	37	0.636	10:07:37	10:07:55	0	+15	16°	109	Tmp	147	6.694	13:53:24	13:53:34	0	+7	15°
34	Tmp	38	0.889	10:08:17	10:08:28	0	+8	16°	110	Tmp	149	7.909	13:55:42	13:55:39	0	-0	14°
35	Tmp	39	1.158	10:08:57	10:09:17	0	+17	16°	Etapa B Num 216 Pen 0 PCZ 19 Total PP 412 PG 7								
36	Tmp	40	1.534	10:09:53	10:10:03	0	+7	16°	Num 216 A 15° PG 6 B 14° PG 7 Tot PG 13 Col. 17°								
37	Tmp	42	2.455	10:12:22	10:12:09	0	-30	16°									
39	Tmp	45	3.565	10:14:52	10:14:47	0	-6	16°	Moto Clube / Princesa Off Road / Zaitec								
40	Tmp	47	4.255	10:16:14	10:16:25	0	+8	16°									
41	Tmp	48	4.584	10:17:10	10:17:04	0	-9	16°									
42	Tmp	48	4.963	10:17:43	10:17:46	0	+0	16°									
43	Tmp	49	5.640	10:18:43	10:18:36	0	-12	16°									
44	Tmp	49	6.166	10:19:42	10:19:39	0	-0	16°									
45	Tmp	50	7.232	10:21:53	10:21:50	0	-0	16°									
46	Tmp	53	0.780	10:27:12	10:27:13	0	+0	16°									
47	Tmp	57	1.919	10:29:55	10:30:24	0	+26	15°									
48	Tmp	58	2.575	10:32:42	10:32:13	0	-78	15°									
49	Tmp	59	3.616	10:35:25	10:35:17	0	-15	15°									
50	Tmp	62	3.582	10:47:10	10:47:07	0	-0	15°									
56	Tmp	66	0.593	10:58:36	10:59:05	0	+26	15°									
58	Tmp	72	4.209	11:07:15	11:07:25	0	+7	15°									
59	Tmp	75	7.180	11:11:54	11:11:49	0	-6	15°									
60	Tmp	79	3.530	11:17:27	11:17:22	0	-6	15°									
Etapa A Num 216 Pen 0 PCZ 13 Total PP 2652 PG 6																	
63	Tmp	95	0.344	12:24:10	12:24:07	0	-0	7°									
64	Tmp	99	2.722	12:28:24	12:28:29	0	+2	5°									
65	Tmp	101	6.826	12:33:56	12:33:53	0	-0	5°									
66	Tmp	102	8.277	12:35:46	12:35:46	0	+0	5°									
67	Tmp	103	2.188	12:41:09	12:41:08	0	-0	4°									
68	Tmp	104	2.865	12:42:13	12:42:13	0	+0	4°									
69	Tmp	104	4.794	12:45:16	12:45:13	0	-0	4°									

N u m	220	Equipe	220 / Eptacio Filho / Pita						
		Patrocinador							
		Cat / NL / Largada	Junior / 50 / 09:13:00	Cidade					

PC	Tp	Trc	KmPC	Ideal	Passagem	Pen	Pontos	Col	PC	Tp	Trc	KmPC	Ideal	Passagem	Pen	Pontos	Col
1	Tmp	3	0.536	09:18:49	09:27:27	0	+515	17°	70	Tmp	105	5.097	12:50:15	13:00:51	0	+633	18°
2	Tmp	4	0.627	09:18:58	09:27:50	0	+529	17°	71	Tmp	107	6.580	12:52:52	13:03:58	0	+663	18°
3	Tmp	4	0.980	09:19:35	09:29:33	0	+595	17°	72	Tmp	108	7.058	12:53:52	13:04:55	0	+660	18°
4	Tmp	4	1.073	09:19:45	09:29:43	0	+595	17°	73	Tmp	108	7.179	12:54:16	13:05:29	0	+670	18°
5	Tmp	6	2.182	09:21:49	09:34:35	0	+763	17°	74	Tmp	110	0.701	12:56:05	13:07:37	0	+689	18°
6	Tmp	7	5.177	09:26:09	09:38:36	0	+744	17°	75	Tmp	112	1.456	12:58:11	13:09:43	0	+689	18°
7	Tmp	8	7.550	09:29:32	09:42:05	0	+750	17°	76	Tmp	113	1.872	12:58:54	13:10:33	0	+696	18°
8	Tmp	8	8.149	09:30:33	09:43:04	0	+748	17°	77	Tmp	114	2.692	13:00:06	13:11:42	0	+693	18°
11	Tmp	8	8.740	09:31:34	09:44:18	0	+761	17°	78	Tmp	115	4.612	13:05:30	13:17:38	0	+725	18°
12	Tmp	11	1.502	09:35:25	09:48:51	0	+803	17°	79	Tmp	116	4.770	13:05:51	13:18:08	0	+734	18°
13	Tmp	11	1.831	09:36:03	09:49:40	0	+814	17°	80	Tmp	118	5.258	13:06:55	13:19:29	0	+751	18°
14	Tmp	14	3.051	09:37:54	09:52:08	0	+851	17°	81	Tmp	119	6.277	13:09:00	13:21:40	0	+757	18°
15	Tmp	14	4.313	09:39:37	09:53:11	0	+811	17°	82	Tmp	120	7.519	13:11:31	13:24:16	0	+762	18°
16	Tmp	15	5.222	09:41:03		0	+1800	18°	83	Tmp	121	7.783	13:12:01	13:24:45	0	+761	18°
17	Tmp	17	5.785	09:42:01	09:58:45	0	+900	18°	84	Tmp	123	8.670	13:13:48	13:26:41	0	+770	18°
18	Tmp	17	6.991	09:43:47	10:00:13	0	+900	18°	85	Tmp	124	9.940	13:16:04	13:29:08	0	+781	18°
19	Tmp	20	1.561	09:46:28	10:02:31	0	+900	18°	86	Tmp	126	0.549	13:17:02	13:30:05	0	+780	18°
20	Tmp	21	2.057	09:47:19	10:03:19	0	+900	18°	87	Tmp	128	1.055	13:18:07	13:31:14	0	+784	18°
21	Tmp	22	2.695	09:48:32	10:04:28	0	+900	18°	88	Tmp	128	1.667	13:19:43	13:33:14	0	+808	18°
22	Tmp	23	3.296	09:50:00	10:06:26	0	+900	18°	89	Tmp	130	2.590	13:21:57	13:35:45	0	+825	18°
23	Tmp	25	1.880	09:57:12	10:10:15	0	+780	18°	90	Tmp	130	3.924	13:24:14	13:39:14	0	+897	18°
24	Tmp	26	2.876	09:58:53	10:11:47	0	+771	18°	91	Tmp	130	4.359	13:24:59	13:40:07	0	+900	18°
25	Tmp	28	3.796	10:00:35	10:13:36	0	+778	18°	92	Tmp	131	5.242	13:26:30	13:41:42	0	+900	18°
26	Tmp	28	5.411	10:03:21	10:16:30	0	+786	18°	93	Tmp	134	0.647	13:27:51	13:43:44	0	+900	18°
27	Tmp	31	6.298	10:05:02	10:18:25	0	+800	18°	94	Tmp	136	1.932	13:30:21	13:46:28	0	+900	18°
28	Tmp	32	7.502	10:07:34	10:22:32	0	+895	18°	95	Tmp	137	2.716	13:32:09	13:48:34	0	+900	18°
29	Tmp	33	7.636	10:07:53	10:23:01	0	+900	18°	96	Tmp	138	4.287	13:35:08	13:56:42	0	+900	18°
30	Tmp	34	7.922	10:08:44	10:23:45	0	+898	18°	97	Tmp	139	4.800	13:36:27	13:58:37	0	+900	18°
31	Tmp	34	8.287	10:09:35	10:24:28	0	+890	18°	98	Tmp	140	5.049	13:36:59	13:59:08	0	+900	18°
32	Tmp	35	8.585	10:10:28	10:25:21	0	+890	18°	99	Tmp	140	5.681	13:37:59	14:00:09	0	+900	18°
33	Tmp	37	0.636	10:12:07	10:27:06	0	+896	18°	109	Tmp	147	6.694	13:57:54	14:20:44	0	+900	18°
34	Tmp	38	0.889	10:12:47	10:28:19	0	+900	18°	110	Tmp	149	7.909	14:00:12	14:23:33	0	+900	18°
35	Tmp	39	1.158	10:13:27	10:29:39	0	+900	18°	Etapa B Num 220 Pen 0 PCZ 0 Total PP 31477 PG 3								
36	Tmp	40	1.534	10:14:23	10:30:37	0	+900	18°	Num 220 A 18° PG 3 B 18° PG 3 Tot PG 6 Col. 18°								
37	Tmp	42	2.455	10:16:52	10:32:47	0	+900	18°									
39	Tmp	45	3.565	10:19:22	10:35:11	0	+900	18°	Moto Clube / Princesa Off Road / Zaitec								
40	Tmp	47	4.255	10:20:44	10:36:50	0	+900	18°									
41	Tmp	48	4.584	10:21:40	10:37:36	0	+900	18°									
42	Tmp	48	4.963	10:22:13	10:38:05	0	+900	18°									
43	Tmp	49	5.640	10:23:13	10:38:50	0	+900	18°									
44	Tmp	49	6.166	10:24:12	10:39:41	0	+900	18°									
45	Tmp	50	7.232	10:26:23	10:41:38	0	+900	18°									
46	Tmp	53	0.780	10:31:42	10:45:31	0	+826	18°									
47	Tmp	57	1.919	10:34:25	10:49:00	0	+872	18°									
48	Tmp	58	2.575	10:37:12	10:52:16	0	+900	18°									
49	Tmp	59	3.616	10:39:55	10:55:19	0	+900	18°									
50	Tmp	62	3.582	10:51:40	11:04:18	0	+755	18°									
56	Tmp	66	0.593	11:03:06	11:16:49	0	+820	18°									
58	Tmp	72	4.209	11:11:45	11:25:46	0	+838	18°									
59	Tmp	75	7.180	11:16:24	11:32:02	0	+900	18°									
60	Tmp	79	3.530	11:21:57	11:37:13	0	+900	18°									
Etapa A Num 220 Pen 0 PCZ 0 Total PP 43374 PG 3																	
63	Tmp	95	0.344	12:28:40	07:07:49	0	-1800	18°									
64	Tmp	99	2.722	12:32:54	12:47:02	0	+845	18°									
65	Tmp	101	6.826	12:38:26	12:51:06	0	+757	18°									
66	Tmp	102	8.277	12:40:16	12:52:33	0	+734	18°									
67	Tmp	103	2.188	12:45:39	12:56:43	0	+661	18°									
68	Tmp	104	2.865	12:46:43	12:57:31	0	+645	18°									
69	Tmp	104	4.794	12:49:46	12:59:56	0	+607	18°									

N u m	230	Equipe	230 / Jose Eduardo R M Sena / Plastico						
		Patrocinador	Prefeitura de Paulo Afonso, Je Embalagens						
		Cat / NL / Largada	Junior / 38 / 09:07:00	Cidade	Paulo Afonso	Honda Crf-250			

PC	Tp	Trc	KmPC	Ideal	Passagem	Pen	Pontos	Col	PC	Tp	Trc	KmPC	Ideal	Passagem	Pen	Pontos	Col
1	Tmp	3	0.536	09:12:49	09:12:51	0	+0	9°	70	Tmp	105	5.097	12:44:15	12:44:14	0	-0	8°
2	Tmp	4	0.627	09:12:58	09:13:11	0	+10	16°	71	Tmp	107	6.580	12:46:52	12:46:58	0	+3	10°
3	Tmp	4	0.980	09:13:35	09:14:09	0	+31	16°	72	Tmp	108	7.058	12:47:52	12:47:57	0	+2	11°
4	Tmp	4	1.073	09:13:45	09:14:23	0	+35	15°	73	Tmp	108	7.179	12:48:16	12:48:15	0	-0	6°
5	Tmp	6	2.182	09:15:49	09:16:25	0	+33	15°	74	Tmp	110	0.701	12:50:05	12:50:10	0	+2	8°
6	Tmp	7	5.177	09:20:09	09:20:10	0	+0	15°	75	Tmp	112	1.456	12:52:11	12:52:13	0	+0	7°
7	Tmp	8	7.550	09:23:32	09:23:31	0	-0	15°	76	Tmp	113	1.872	12:52:54	12:52:52	0	-0	5°
8	Tmp	8	8.149	09:24:33	09:24:33	0	+0	15°	77	Tmp	114	2.692	12:54:06	12:54:05	0	-0	5°
11	Tmp	8	8.740	09:25:34	09:25:33	0	-0	15°	78	Tmp	115	4.612	12:59:30	12:59:31	0	+0	4°
12	Tmp	11	1.502	09:29:25	09:29:30	0	+2	14°	79	Tmp	116	4.770	12:59:51	13:00:01	0	+7	4°
13	Tmp	11	1.831	09:30:03	09:30:11	0	+5	14°	80	Tmp	118	5.258	13:00:55	13:01:12	0	+14	5°
14	Tmp	14	3.051	09:31:54	09:31:59	0	+2	14°	81	Tmp	119	6.277	13:03:00	13:02:58	0	-0	5°
15	Tmp	14	4.313	09:33:37	09:33:41	0	+1	13°	82	Tmp	120	7.519	13:05:31	13:05:32	0	+0	5°
16	Tmp	15	5.222	09:35:03	09:35:56	0	+50	11°	83	Tmp	121	7.783	13:06:01	13:06:03	0	+0	5°
17	Tmp	17	5.785	09:36:01	09:37:07	0	+63	12°	84	Tmp	123	8.670	13:07:48	13:07:52	0	+1	5°
18	Tmp	17	6.991	09:37:47	09:38:32	0	+42	12°	85	Tmp	124	9.940	13:10:04	13:10:07	0	+0	4°
19	Tmp	20	1.561	09:40:28	09:40:30	0	+0	12°	86	Tmp	126	0.549	13:11:02	13:11:03	0	+0	3°
20	Tmp	21	2.057	09:41:19	09:41:21	0	+0	12°	87	Tmp	128	1.055	13:12:07	13:12:08	0	+0	3°
21	Tmp	22	2.695	09:42:32	09:42:31	0	-0	12°	88	Tmp	128	1.667	13:13:43	13:13:47	0	+1	3°
22	Tmp	23	3.296	09:44:00	09:44:11	0	+8	12°	89	Tmp	130	2.590	13:15:57	13:15:55	0	-0	3°
23	Tmp	25	1.880	09:51:12	09:51:16	0	+1	12°	90	Tmp	130	3.924	13:18:14	13:18:16	0	+0	3°
24	Tmp	26	2.876	09:52:53	09:52:52	0	-0	12°	91	Tmp	130	4.359	13:18:59	13:18:57	0	-0	3°
25	Tmp	28	3.796	09:54:35	09:54:36	0	+0	12°	92	Tmp	131	5.242	13:20:30	13:20:30	0	+0	3°
26	Tmp	28	5.411	09:57:21	09:57:20	0	-0	12°	93	Tmp	134	0.647	13:21:51	13:21:54	0	+0	3°
27	Tmp	31	6.298	09:59:02	09:59:29	0	+24	12°	94	Tmp	136	1.932	13:24:21	13:24:21	0	+0	3°
28	Tmp	32	7.502	10:01:34	10:02:02	0	+25	12°	95	Tmp	137	2.716	13:26:09	13:26:10	0	+0	3°
29	Tmp	33	7.636	10:01:53	10:02:28	0	+32	11°	96	Tmp	138	4.287	13:29:08	13:29:12	0	+1	2°
30	Tmp	34	7.922	10:02:44	10:03:10	0	+23	11°	97	Tmp	139	4.800	13:30:27	13:30:47	0	+17	3°
31	Tmp	34	8.287	10:03:35	10:03:47	0	+9	11°	98	Tmp	140	5.049	13:30:59	13:31:14	0	+12	3°
32	Tmp	35	8.585	10:04:28	10:04:38	0	+7	10°	99	Tmp	140	5.681	13:31:59	13:32:04	0	+2	3°
33	Tmp	37	0.636	10:06:07	10:06:10	0	+0	10°	109	Tmp	147	6.694	13:51:54	13:51:54	0	+0	3°
34	Tmp	38	0.889	10:06:47	10:06:51	0	+1	10°	110	Tmp	149	7.909	13:54:12	13:54:12	0	+0	3°
35	Tmp	39	1.158	10:07:27	10:07:52	0	+22	10°	Etapa B Num 230 Pen 0 PCZ 27 Total PP 71 PG 20								
36	Tmp	40	1.534	10:08:23	10:08:38	0	+12	9°	Num 230 A 5° PG 16 B 3° PG 20 Tot PG 36 Col. 3°								
37	Tmp	42	2.455	10:10:52	10:10:49	0	-0	9°									
39	Tmp	45	3.565	10:13:22	10:13:23	0	+0	9°	Moto Clube / Princesa Off Road / Zaitec								
40	Tmp	47	4.255	10:14:44	10:14:50	0	+3	9°									
41	Tmp	48	4.584	10:15:40	10:15:38	0	-0	8°									
42	Tmp	48	4.963	10:16:13	10:16:13	0	+0	8°									
43	Tmp	49	5.640	10:17:13	10:17:14	0	+0	8°									
44	Tmp	49	6.166	10:18:12	10:18:15	0	+0	8°									
45	Tmp	50	7.232	10:20:23	10:20:27	0	+1	8°									
46	Tmp	53	0.780	10:25:42	10:25:50	0	+5	7°									
47	Tmp	57	1.919	10:28:25	10:28:40	0	+12	6°									
48	Tmp	58	2.575	10:31:12	10:31:11	0	-0	5°									
49	Tmp	59	3.616	10:33:55	10:33:56	0	+0	5°									
50	Tmp	62	3.582	10:45:40	10:45:43	0	+0	5°									
56	Tmp	66	0.593	10:57:06	10:58:29	0	+80	5°									
58	Tmp	72	4.209	11:05:45	11:05:46	0	+0	5°									
59	Tmp	75	7.180	11:10:24	11:10:36	0	+9	5°									
60	Tmp	79	3.530	11:15:57	11:16:01	0	+1	5°									
Etapa A Num 230 Pen 0 PCZ 22 Total PP 549 PG 16																	
63	Tmp	95	0.344	12:22:40	12:22:41	0	+0	9°									
64	Tmp	99	2.722	12:26:54	12:27:06	0	+9	9°									
65	Tmp	101	6.826	12:32:26	12:32:27	0	+0	9°									
66	Tmp	102	8.277	12:34:16	12:34:17	0	+0	9°									
67	Tmp	103	2.188	12:39:39	12:39:42	0	+0	9°									
68	Tmp	104	2.865	12:40:43	12:40:46	0	+0	9°									
69	Tmp	104	4.794	12:43:46	12:43:46	0	+0	9°									

N u m	250	Equipe	250 / Edvaldo Feitosa Freire Junior / Gado						
		Patrocinador	Prado Imoveis, Loteamento Basevi Rocha Leite Advoc						
		Cat / NL / Largada	Junior / 35 / 09:05:30	Cidade	Prado	Honda Crf-230			

PC	Tp	Trc	KmPC	Ideal	Passagem	Pen	Pontos	Col	PC	Tp	Trc	KmPC	Ideal	Passagem	Pen	Pontos	Col
1	Tmp	3	0.536	09:11:19	09:01:18	0	-1800	18°	70	Tmp	105	5.097	12:42:45	12:42:47	0	+0	3°
2	Tmp	4	0.627	09:11:28	09:01:30	0	-1800	18°	71	Tmp	107	6.580	12:45:22	12:45:25	0	+0	2°
3	Tmp	4	0.980	09:12:05	09:02:24	0	-1800	18°	72	Tmp	108	7.058	12:46:22	12:46:21	0	-0	1°
4	Tmp	4	1.073	09:12:15	09:02:45	0	-1800	18°	73	Tmp	108	7.179	12:46:46	12:46:47	0	+0	1°
5	Tmp	6	2.182	09:14:19	09:04:32	0	-1800	18°	74	Tmp	110	0.701	12:48:35	12:48:40	0	+2	1°
6	Tmp	7	5.177	09:18:39	09:08:41	0	-1800	18°	75	Tmp	112	1.456	12:50:41	12:50:43	0	+0	1°
7	Tmp	8	7.550	09:22:02	09:22:01	0	-0	18°	76	Tmp	113	1.872	12:51:24	12:51:26	0	+0	1°
8	Tmp	8	8.149	09:23:03	09:23:03	0	+0	18°	77	Tmp	114	2.692	12:52:36	12:52:35	0	-0	1°
11	Tmp	8	8.740	09:24:04	09:24:06	0	+0	18°	78	Tmp	115	4.612	12:58:00	12:58:01	0	+0	1°
12	Tmp	11	1.502	09:27:55	09:28:01	0	+3	18°	79	Tmp	116	4.770	12:58:21	12:58:25	0	+1	1°
13	Tmp	11	1.831	09:28:33	09:28:43	0	+7	18°	80	Tmp	118	5.258	12:59:25	12:59:34	0	+6	1°
14	Tmp	14	3.051	09:30:24	09:30:35	0	+8	18°	81	Tmp	119	6.277	13:01:30	13:01:30	0	+0	1°
15	Tmp	14	4.313	09:32:07	09:32:10	0	+0	18°	82	Tmp	120	7.519	13:04:01	13:04:03	0	+0	1°
16	Tmp	15	5.222	09:33:33	09:34:08	0	+32	17°	83	Tmp	121	7.783	13:04:31	13:04:33	0	+0	1°
17	Tmp	17	5.785	09:34:31	09:37:06	0	+152	17°	84	Tmp	123	8.670	13:06:18	13:06:19	0	+0	1°
18	Tmp	17	6.991	09:36:17	09:38:28	0	+128	17°	85	Tmp	124	9.940	13:08:34	13:08:38	0	+1	1°
19	Tmp	20	1.561	09:38:58	09:40:28	0	+87	17°	86	Tmp	126	0.549	13:09:32	13:09:34	0	+0	1°
20	Tmp	21	2.057	09:39:49	09:41:18	0	+86	17°	87	Tmp	128	1.055	13:10:37	13:10:41	0	+1	1°
21	Tmp	22	2.695	09:41:02	09:42:24	0	+79	17°	88	Tmp	128	1.667	13:12:13	13:12:12	0	-0	1°
22	Tmp	23	3.296	09:42:30	09:44:01	0	+88	17°	89	Tmp	130	2.590	13:14:27	13:14:29	0	+0	1°
23	Tmp	25	1.880	09:49:42	09:49:46	0	+1	17°	90	Tmp	130	3.924	13:16:44	13:16:52	0	+5	1°
24	Tmp	26	2.876	09:51:23	09:51:26	0	+0	17°	91	Tmp	130	4.359	13:17:29	13:17:31	0	+0	1°
25	Tmp	28	3.796	09:53:05	09:53:07	0	+0	17°	92	Tmp	131	5.242	13:19:00	13:19:00	0	+0	1°
26	Tmp	28	5.411	09:55:51	09:56:04	0	+10	17°	93	Tmp	134	0.647	13:20:21	13:20:26	0	+2	1°
27	Tmp	31	6.298	09:57:32	09:57:58	0	+23	17°	94	Tmp	136	1.932	13:22:51	13:22:50	0	-0	1°
28	Tmp	32	7.502	10:00:04	10:00:26	0	+19	17°	95	Tmp	137	2.716	13:24:39	13:24:40	0	+0	1°
29	Tmp	33	7.636	10:00:23	10:00:47	0	+21	17°	96	Tmp	138	4.287	13:27:38	13:27:52	0	+11	1°
30	Tmp	34	7.922	10:01:14	10:01:32	0	+15	17°	97	Tmp	139	4.800	13:28:57	13:29:12	0	+12	1°
31	Tmp	34	8.287	10:02:05	10:02:11	0	+3	17°	98	Tmp	140	5.049	13:29:29	13:29:42	0	+10	2°
32	Tmp	35	8.585	10:02:58	10:02:57	0	-0	17°	99	Tmp	140	5.681	13:30:29	13:30:33	0	+1	2°
33	Tmp	37	0.636	10:04:37	10:04:42	0	+2	17°	109	Tmp	147	6.694	13:50:24	13:50:22	0	-0	2°
34	Tmp	38	0.889	10:05:17	10:05:21	0	+1	17°	110	Tmp	149	7.909	13:52:42	13:52:37	0	-6	2°
35	Tmp	39	1.158	10:05:57	10:06:15	0	+15	17°	Etapa B Num 250 Pen 0 PCZ 27 Total PP 58 PG 22								
36	Tmp	40	1.534	10:06:53	10:07:04	0	+8	17°	Num 250 A 16° PG 5 B 2° PG 22 Tot PG 27 Col. 8°								
37	Tmp	42	2.455	10:09:22	10:09:21	0	-0	17°									
39	Tmp	45	3.565	10:11:52	10:11:54	0	+0	17°	Moto Clube / Princesa Off Road / Zaitec								
40	Tmp	47	4.255	10:13:14	10:13:19	0	+2	17°									
41	Tmp	48	4.584	10:14:10	10:14:09	0	-0	17°									
42	Tmp	48	4.963	10:14:43	10:14:46	0	+0	17°									
43	Tmp	49	5.640	10:15:43	10:15:43	0	+0	17°									
44	Tmp	49	6.166	10:16:42	10:16:44	0	+0	17°									
45	Tmp	50	7.232	10:18:53	10:18:58	0	+2	17°									
46	Tmp	53	0.780	10:24:12	10:24:20	0	+5	17°									
47	Tmp	57	1.919	10:26:55	10:27:25	0	+27	17°									
48	Tmp	58	2.575	10:29:42	10:29:40	0	-0	17°									
49	Tmp	59	3.616	10:32:25	10:32:24	0	-0	17°									
50	Tmp	62	3.582	10:44:10	10:44:12	0	+0	17°									
56	Tmp	66	0.593	10:55:36	10:55:40	0	+1	17°									
58	Tmp	72	4.209	11:04:15	11:04:22	0	+4	16°									
59	Tmp	75	7.180	11:08:54	11:09:38	0	+41	16°									
60	Tmp	79	3.530	11:14:27	11:14:30	0	+0	16°									
Etapa A Num 250 Pen 0 PCZ 17 Total PP 11670 PG 5																	
63	Tmp	95	0.344	12:21:10	12:21:11	0	+0	11°									
64	Tmp	99	2.722	12:25:24	12:25:24	0	+0	4°									
65	Tmp	101	6.826	12:30:56	12:30:57	0	+0	4°									
66	Tmp	102	8.277	12:32:46	12:32:49	0	+0	3°									
67	Tmp	103	2.188	12:38:09	12:38:09	0	+0	3°									
68	Tmp	104	2.865	12:39:13	12:39:13	0	+0	3°									
69	Tmp	104	4.794	12:42:16	12:42:17	0	+0	3°									

N u m	307	Equipe		307 / Valdirei Pimenta Constantino / Pimenta														
		Patrocinador																
		Cat / NL / Largada		Junior / 49 / 09:12:30					Cidade			Feira de Santana			Crf 230			

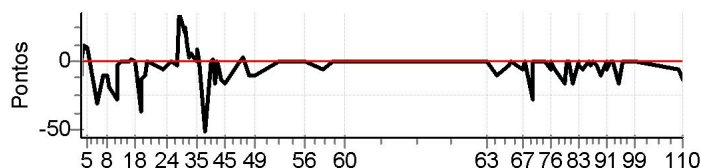
PC	Tp	Trc	KmPC	Ideal	Passagem	Pen	Pontos	Col	PC	Tp	Trc	KmPC	Ideal	Passagem	Pen	Pontos	Col						
1	Tmp	3	0.536	09:18:19	09:18:19	0	+0	1°	70	Tmp	105	5.097	12:49:45	12:49:48	0	+0	16°						
2	Tmp	4	0.627	09:18:28	09:18:35	0	+4	12°	71	Tmp	107	6.580	12:52:22	12:52:31	0	+6	16°						
3	Tmp	4	0.980	09:19:05	09:19:43	0	+35	15°	72	Tmp	108	7.058	12:53:22	12:53:23	0	+0	16°						
4	Tmp	4	1.073	09:19:15	09:20:22	0	+64	16°	73	Tmp	108	7.179	12:53:46	12:53:41	0	-6	16°						
5	Tmp	6	2.182	09:21:19	09:22:15	0	+53	16°	74	Tmp	110	0.701	12:55:35	12:55:41	0	+3	15°						
6	Tmp	7	5.177	09:25:39	09:25:40	0	+0	16°	75	Tmp	112	1.456	12:57:41	12:57:44	0	+0	15°						
7	Tmp	8	7.550	09:29:02	09:29:02	0	+0	16°	76	Tmp	113	1.872	12:58:24	12:58:22	0	-0	15°						
8	Tmp	8	8.149	09:30:03	09:30:03	0	+0	16°	77	Tmp	114	2.692	12:59:36	12:59:35	0	-0	12°						
11	Tmp	8	8.740	09:31:04	09:30:56	0	-15	16°	78	Tmp	115	4.612	13:05:00	13:05:09	0	+6	11°						
12	Tmp	11	1.502	09:34:55	09:34:57	0	+0	16°	79	Tmp	116	4.770	13:05:21	13:05:38	0	+14	13°						
13	Tmp	11	1.831	09:35:33	09:35:40	0	+4	16°	80	Tmp	118	5.258	13:06:25	13:06:56	0	+28	14°						
14	Tmp	14	3.051	09:37:24	09:37:39	0	+12	16°	81	Tmp	119	6.277	13:08:30	13:08:49	0	+16	14°						
15	Tmp	14	4.313	09:39:07	09:39:07	0	+0	16°	82	Tmp	120	7.519	13:11:01	13:11:02	0	+0	14°						
16	Tmp	15	5.222	09:40:33	09:40:39	0	+3	12°	83	Tmp	121	7.783	13:11:31	13:11:26	0	-6	14°						
17	Tmp	17	5.785	09:41:31	09:41:38	0	+4	11°	84	Tmp	123	8.670	13:13:18	13:13:16	0	-0	14°						
18	Tmp	17	6.991	09:43:17	09:43:18	0	+0	10°	85	Tmp	124	9.940	13:15:34	13:15:38	0	+1	14°						
19	Tmp	20	1.561	09:45:58	09:45:57	0	-0	9°	86	Tmp	126	0.549	13:16:32	13:16:32	0	+0	13°						
20	Tmp	21	2.057	09:46:49	09:46:50	0	+0	9°	87	Tmp	128	1.055	13:17:37	13:17:48	0	+8	14°						
21	Tmp	22	2.695	09:48:02	09:48:01	0	-0	8°	88	Tmp	128	1.667	13:19:13	13:19:23	0	+7	14°						
22	Tmp	23	3.296	09:49:30	09:49:50	0	+17	9°	89	Tmp	130	2.590	13:21:27	13:21:27	0	+0	14°						
23	Tmp	25	1.880	09:56:42	09:56:46	0	+1	9°	90	Tmp	130	3.924	13:23:44	13:24:03	0	+16	13°						
24	Tmp	26	2.876	09:58:23	09:58:24	0	+0	9°	91	Tmp	130	4.359	13:24:29	13:24:38	0	+6	14°						
25	Tmp	28	3.796	10:00:05	10:00:10	0	+2	9°	92	Tmp	131	5.242	13:26:00	13:25:58	0	-0	14°						
26	Tmp	28	5.411	10:02:51	10:02:54	0	+0	9°	93	Tmp	134	0.647	13:27:21	13:27:40	0	+16	14°						
27	Tmp	31	6.298	10:04:32	10:04:45	0	+10	8°	94	Tmp	136	1.932	13:29:51	13:29:51	0	+0	14°						
28	Tmp	32	7.502	10:07:04	10:08:34	0	+87	11°	95	Tmp	137	2.716	13:31:39	13:31:37	0	-0	14°						
29	Tmp	33	7.636	10:07:23	10:08:59	0	+93	12°	96	Tmp	138	4.287	13:34:38	13:34:51	0	+10	12°						
30	Tmp	34	7.922	10:08:14	10:09:42	0	+85	12°	97	Tmp	139	4.800	13:35:57	13:36:25	0	+25	10°						
31	Tmp	34	8.287	10:09:05	10:10:21	0	+73	12°	98	Tmp	140	5.049	13:36:29	13:37:02	0	+30	11°						
32	Tmp	35	8.585	10:09:58	10:11:20	0	+79	12°	99	Tmp	140	5.681	13:37:29	13:37:56	0	+24	11°						
33	Tmp	37	0.636	10:11:37	10:12:54	0	+74	12°	109	Tmp	147	6.694	13:57:24	13:57:29	0	+2	11°						
34	Tmp	38	0.889	10:12:17	10:13:34	0	+74	12°	110	Tmp	149	7.909	13:59:42	13:59:47	0	+2	11°						
35	Tmp	39	1.158	10:12:57	10:14:30	0	+90	12°	Etapa B									Num 307	Pen 0	PCZ 17	Total PP 257	PG 10	
36	Tmp	40	1.534	10:13:53	10:15:18	0	+82	12°	Num 307									A 11°	PG 10	B 11°	PG 10	Tot PG 20	Col. 12°
37	Tmp	42	2.455	10:16:22	10:17:14	0	+49	12°															
39	Tmp	45	3.565	10:18:52	10:19:39	0	+44	12°	Moto Clube / Princesa Off Road / Zaitec														
40	Tmp	47	4.255	10:20:14	10:21:09	0	+52	12°															
41	Tmp	48	4.584	10:21:10	10:21:51	0	+38	12°															
42	Tmp	48	4.963	10:21:43	10:22:17	0	+31	12°															
43	Tmp	49	5.640	10:22:43	10:22:55	0	+9	12°															
44	Tmp	49	6.166	10:23:42	10:23:42	0	+0	12°															
45	Tmp	50	7.232	10:25:53	10:25:50	0	-0	12°															
46	Tmp	53	0.780	10:31:12	10:31:16	0	+1	11°															
47	Tmp	57	1.919	10:33:55	10:34:18	0	+20	11°															
48	Tmp	58	2.575	10:36:42	10:36:30	0	-27	11°															
49	Tmp	59	3.616	10:39:25	10:39:23	0	-0	11°															
50	Tmp	62	3.582	10:51:10	10:51:11	0	+0	11°															
56	Tmp	66	0.593	11:02:36	11:03:33	0	+54	11°															
58	Tmp	72	4.209	11:11:15	11:11:23	0	+5	11°															
59	Tmp	75	7.180	11:15:54	11:15:55	0	+0	11°															
60	Tmp	79	3.530	11:21:27	11:21:28	0	+0	11°															
Etapa A									Num 307	Pen 0	PCZ 18	Total PP 1291	PG 10										
63	Tmp	95	0.344	12:28:10	12:28:09	0	-0	1°															
64	Tmp	99	2.722	12:32:24	12:32:43	0	+16	15°															
65	Tmp	101	6.826	12:37:56	12:37:54	0	-0	15°															
66	Tmp	102	8.277	12:39:46	12:39:48	0	+0	15°															
67	Tmp	103	2.188	12:45:09	12:45:10	0	+0	14°															
68	Tmp	104	2.865	12:46:13	12:46:25	0	+9	17°															
69	Tmp	104	4.794	12:49:16	12:49:15	0	-0	16°															

N u m	310	Equipe	310 / Kaio Nascimento Mendes / Bagualzinho						
		Patrocinador							
		Cat / NL / Largada	Junior / 51 / 09:13:30	Cidade	Itaberaba	Crf 230			

PC	Tp	Trc	KmPC	Ideal	Passagem	Pen	Pontos	Col	PC	Tp	Trc	KmPC	Ideal	Passagem	Pen	Pontos	Col
1	Tmp	3	0.536	09:19:19	09:19:13	0	-9	16°	70	Tmp	105	5.097	12:50:45	12:50:44	0	-0	17°
2	Tmp	4	0.627	09:19:28	09:19:26	0	-0	15°	71	Tmp	107	6.580	12:53:22	12:53:26	0	+1	17°
3	Tmp	4	0.980	09:20:05	09:20:17	0	+9	7°	72	Tmp	108	7.058	12:54:22	12:54:26	0	+1	17°
4	Tmp	4	1.073	09:20:15	09:20:30	0	+12	2°	73	Tmp	108	7.179	12:54:46	12:54:43	0	-0	17°
5	Tmp	6	2.182	09:22:19	09:22:33	0	+11	2°	74	Tmp	110	0.701	12:56:35	12:56:32	0	-0	17°
6	Tmp	7	5.177	09:26:39	09:26:26	0	-30	11°	75	Tmp	112	1.456	12:58:41	12:58:36	0	-6	17°
7	Tmp	8	7.550	09:30:02	09:29:56	0	-9	12°	76	Tmp	113	1.872	12:59:24	12:59:23	0	-0	17°
8	Tmp	8	8.149	09:31:03	09:30:57	0	-9	14°	77	Tmp	114	2.692	13:00:36	13:00:31	0	-6	17°
11	Tmp	8	8.740	09:32:04	09:31:55	0	-18	14°	78	Tmp	115	4.612	13:06:00	13:05:52	0	-15	16°
12	Tmp	11	1.502	09:35:55	09:35:43	0	-27	15°	79	Tmp	116	4.770	13:06:21	13:06:19	0	-0	15°
13	Tmp	11	1.831	09:36:33	09:36:29	0	-3	15°	80	Tmp	118	5.258	13:07:25	13:07:29	0	+1	13°
14	Tmp	14	3.051	09:38:24	09:38:24	0	+0	15°	81	Tmp	119	6.277	13:09:30	13:09:22	0	-15	13°
15	Tmp	14	4.313	09:40:07	09:40:04	0	-0	15°	82	Tmp	120	7.519	13:12:01	13:12:01	0	+0	12°
16	Tmp	15	5.222	09:41:33	09:41:32	0	-0	9°	83	Tmp	121	7.783	13:12:31	13:12:27	0	-3	12°
17	Tmp	17	5.785	09:42:31	09:42:36	0	+2	8°	84	Tmp	123	8.670	13:14:18	13:14:13	0	-6	12°
18	Tmp	17	6.991	09:44:17	09:44:14	0	-0	8°	85	Tmp	124	9.940	13:16:34	13:16:33	0	-0	12°
19	Tmp	20	1.561	09:46:58	09:46:43	0	-36	8°	86	Tmp	126	0.549	13:17:32	13:17:28	0	-3	12°
20	Tmp	21	2.057	09:47:49	09:47:42	0	-12	8°	87	Tmp	128	1.055	13:18:37	13:18:35	0	-0	12°
21	Tmp	22	2.695	09:49:02	09:48:56	0	-9	9°	88	Tmp	128	1.667	13:20:13	13:20:09	0	-3	12°
22	Tmp	23	3.296	09:50:30	09:50:33	0	+0	8°	89	Tmp	130	2.590	13:22:27	13:22:21	0	-9	12°
23	Tmp	25	1.880	09:57:42	09:57:37	0	-6	8°	90	Tmp	130	3.924	13:24:44	13:24:41	0	-0	11°
24	Tmp	26	2.876	09:59:23	09:59:19	0	-3	8°	91	Tmp	130	4.359	13:25:29	13:25:24	0	-6	11°
25	Tmp	28	3.796	10:01:05	10:01:02	0	-0	8°	92	Tmp	131	5.242	13:27:00	13:27:00	0	+0	11°
26	Tmp	28	5.411	10:03:51	10:03:47	0	-3	8°	93	Tmp	134	0.647	13:28:21	13:28:22	0	+0	11°
27	Tmp	31	6.298	10:05:32	10:06:11	0	+36	9°	94	Tmp	136	1.932	13:30:51	13:30:43	0	-15	11°
28	Tmp	32	7.502	10:08:04	10:08:28	0	+21	9°	95	Tmp	137	2.716	13:32:39	13:32:37	0	-0	11°
29	Tmp	33	7.636	10:08:23	10:08:51	0	+25	9°	96	Tmp	138	4.287	13:35:38	13:35:38	0	+0	9°
30	Tmp	34	7.922	10:09:14	10:09:29	0	+12	8°	97	Tmp	139	4.800	13:36:57	13:36:57	0	+0	8°
31	Tmp	34	8.287	10:10:05	10:10:11	0	+3	8°	98	Tmp	140	5.049	13:37:29	13:37:26	0	-0	7°
32	Tmp	35	8.585	10:10:58	10:11:07	0	+6	8°	99	Tmp	140	5.681	13:38:29	13:38:29	0	+0	6°
33	Tmp	37	0.636	10:12:37	10:12:42	0	+2	8°	109	Tmp	147	6.694	13:58:24	13:58:19	0	-6	6°
34	Tmp	38	0.889	10:13:17	10:13:18	0	+0	7°	110	Tmp	149	7.909	14:00:42	14:00:35	0	-12	6°
35	Tmp	39	1.158	10:13:57	10:14:10	0	+10	6°	Etapa B Num 310 Pen 0 PCZ 18 Total PP 154 PG 15								
36	Tmp	40	1.534	10:14:53	10:14:52	0	-0	6°	Num 310 A 3° PG 20 B 6° PG 15 Tot PG 35 Col. 4°								
37	Tmp	42	2.455	10:17:22	10:17:02	0	-51	6°									
39	Tmp	45	3.565	10:19:52	10:19:55	0	+0	6°									
40	Tmp	47	4.255	10:21:14	10:21:19	0	+2	6°									
41	Tmp	48	4.584	10:22:10	10:22:02	0	-15	7°									
42	Tmp	48	4.963	10:22:43	10:22:43	0	+0	7°									
43	Tmp	49	5.640	10:23:43	10:23:38	0	-6	7°									
44	Tmp	49	6.166	10:24:42	10:24:35	0	-12	7°									
45	Tmp	50	7.232	10:26:53	10:26:45	0	-15	7°									
46	Tmp	53	0.780	10:32:12	10:32:08	0	-3	6°									
47	Tmp	57	1.919	10:34:55	10:35:02	0	+4	3°									
48	Tmp	58	2.575	10:37:42	10:37:36	0	-9	4°									
49	Tmp	59	3.616	10:40:25	10:40:19	0	-9	4°									
50	Tmp	62	3.582	10:52:10	10:52:10	0	+0	4°									
56	Tmp	66	0.593	11:03:36	11:03:35	0	-0	3°									
58	Tmp	72	4.209	11:12:15	11:12:10	0	-6	3°									
59	Tmp	75	7.180	11:16:54	11:16:55	0	+0	3°									
60	Tmp	79	3.530	11:22:27	11:22:25	0	-0	3°									
Etapa A Num 310 Pen 0 PCZ 15 Total PP 455 PG 20																	
63	Tmp	95	0.344	12:29:10	12:29:14	0	+1	12°									
64	Tmp	99	2.722	12:33:24	12:33:18	0	-9	11°									
65	Tmp	101	6.826	12:38:56	12:38:52	0	-3	13°									
66	Tmp	102	8.277	12:40:46	12:40:46	0	+0	13°									
67	Tmp	103	2.188	12:46:09	12:46:04	0	-6	17°									
68	Tmp	104	2.865	12:47:13	12:47:11	0	-0	16°									
69	Tmp	104	4.794	12:50:16	12:50:04	0	-27	17°									

Etapa B	Num	310	Pen	0	PCZ	18	Total PP	154	PG	15
----------------	-----	-----	-----	---	-----	----	----------	-----	----	----

Num	310	A	3°	PG	20	B	6°	PG	15	Tot PG	35	Col.	4°
-----	-----	---	----	----	----	---	----	----	----	--------	----	------	----



Moto Clube / Princesa Off Road / Zaitec